

**SMARTSLIDE DOOR**  
**140mm & RAB WALL FRAMING**  
**19mm CAVITY &**  
**STARKITRAVE REVEAL SYSTEM**

# AMBIANCE™

Inline Window Systems

**STÄRKE**

F1S	FLASHINGS & STARKITRAVE
01- R-35	TIMBER MID FLOOR NON REBATED - 9mm CLADDING
02- R-35	TIMBER MID FLOOR SEMI REBATED - 9mm CLADDING
03- R-35	CONCRETE MID FLOOR NON REBATED - 9mm CLADDING
04- R-35	CONCRETE GROUND FLOOR NON REBATED - 9mm CLADDING
05- R-35	CONCRETE GROUND FLOOR FULLY REBATED - 9mm CLADDING
06- R-35	TIMBER GROUND FLOOR FULLY REBATED - 9mm CLADDING
01- B-45	TIMBER MID FLOOR NON REBATED - 19mm CLADDING
02- B-45	TIMBER MID FLOOR SEMI REBATED - 19mm CLADDING
03- B-45	CONCRETE MID FLOOR NON REBATED - 19mm CLADDING
04- B-45	CONCRETE GROUND FLOOR NON REBATED - 19mm CLADDING
05- B-45	CONCRETE GROUND FLOOR FULLY REBATED - 19mm CLADDING
06- B-45	TIMBER GROUND FLOOR FULLY REBATED - 19mm CLADDING
01- G-60	TIMBER MID FLOOR NON REBATED - 35mm CLADDING
02- G-60	TIMBER MID FLOOR SEMI REBATED - 35mm CLADDING
03- G-60	CONCRETE MID FLOOR NON REBATED - 35mm CLADDING
04- G-60	CONCRETE GROUND FLOOR NON REBATED - 35mm CLADDING
05- G-60	CONCRETE GROUND FLOOR FULLY REBATED - 35mm CLADDING
06- G-60	TIMBER GROUND FLOOR FULLY REBATED - 35mm CLADDING
01- Y-65	TIMBER MID FLOOR NON REBATED - BRICK CLADDING
02- Y-65	TIMBER MID FLOOR SEMI REBATED - BRICK CLADDING
03- Y-65	CONCRETE FLOOR NON REBATED - BRICK CLADDING
05- Y-65	CONCRETE GROUND FLOOR FULLY REBATED - BRICK CLADDING
06- Y-65	TIMBER GROUND FLOOR FULLY REBATED - BRICK CLADDING



interactive assembly  
instructions available

<http://wksp.nz/sg-wfl-w70>



Get **WORKINGSPEC** from  
Apple App Store/Google Play

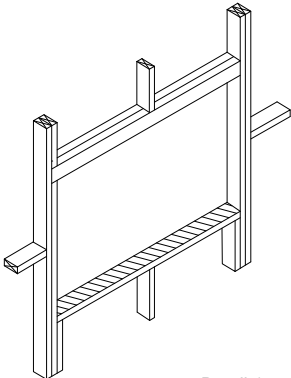
# Opening Preparation

The preparation of the wall opening prior to the installation of the window or door is essentially the same regardless of cladding option. The following offers a step by step guide to the process.

## Step P1 – Preliminary Check

Before proceeding with the installation and preparation of the wall underlay, the installer should examine and confirm that the sill trimmer is essentially level, straight and free of twist. It is particularly important that it is well secured and does not slope toward the interior of the building. If necessary, the sill trimmer should be planed to ensure it does not exhibit any of the above conditions.

The sill trimmer must be designed to comply with NZS3604.



Detail 1

Note: Projects within the new Extra High wind zone require the use of a Rigid Underlay in addition to and underneath a flexible wall underlay, except as noted in the attached comment.

This needs to be considered when sizing the windows.

**9.1.7.2** Rigid *wall underlays*, in association with *drained cavities* (including *direct fixed* corrugated profile metal) are required in Extra High *wind zones*. Refer to Table 3 and Table 23. Rigid *underlays* are also required to *external walls* of attached garages that are unlined. Refer Paragraphs 1.1.1 & 9.1.3.4 c).

Rigid *wall underlays* shall be in accordance with Table 23, and shall:

- a) Be minimum 7mm plywood, or 6mm fibre cement sheet
- b) Be installed with sheet edges fixed over solid framing
- c) Be over-fixed with a flexible *wall underlay* from Table 23 and installed as in Paragraph 9.1.7.1

COMMENT:  
Some proprietary systems may not require the addition of a flexible *underlay*

## Step P2 – Cut the Underlay

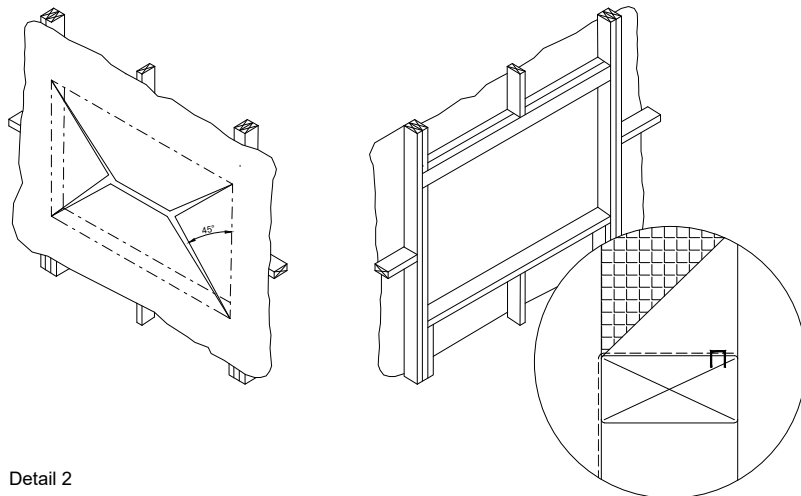
Clause 9.1.5 a) describes the application of a flexible wall underlay.

Amend 5 Aug 2011	<b>9.1.5 Wall underlays to wall openings</b>
	Prior to window or door installation:
Amend 5 Aug 2011	Flexible wall underlay shall be cut and dressed into all sides of openings as per Figure 72A and B,

To achieve this, follow these steps;

- Cut the building underlay at 45° away from each corner.
- Fold the flaps tightly into the opening and secure to the framing on all sides.
- Trim off excess underlay after fixing.

Note: Figures 72A & 72B do not show the inner extent of the flexible wall underlay. The industry trend has been to cut this off at the inner corner of the framing as wrapping around sometimes interferes with the internal linings. Ensure the underlay is fixed tightly to the framework.



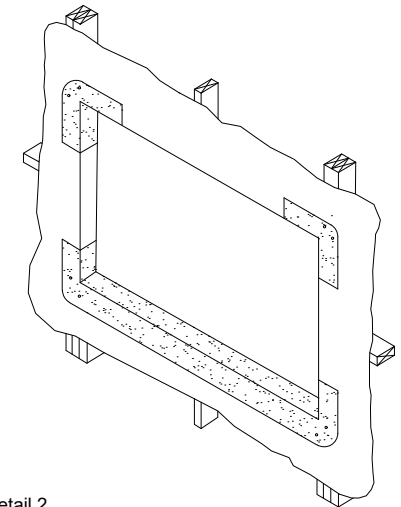
Detail 2

## Step P3 – Flexible Flashing Tape

After ensuring the flashing tape to be used meets the criteria set out in Clause 9.1.5 b), follow these steps to satisfy the clause;

- Cut the flashing tape for the sill at least 200mm wider than the opening.
- Fit the tape, as described in the manufacturers literature, with the inner edge of the tape flush with the inside line of the framing, so that it extends a minimum of 100mm up each jamb ensuring timber framing is covered.
- Ensure the tape is securely adhered to the underlay on all surfaces and fits tightly into each of the corners.
- Cut two more pieces of tape at least 200mm long and fit into each of the upper corners as described above ensuring timber framing is covered.

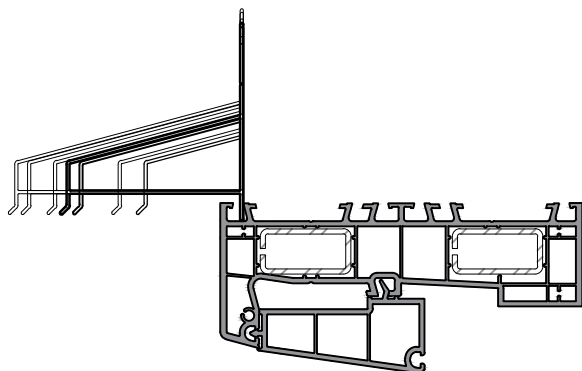
Amend 5 Aug 2011	b) Flexible flashing tape shall be applied to head and sill framing as shown in Figures 72A and 72B. Flexible flashing tape shall:
Amend 5 Aug 2011	i) Comply with parts 3.2 and 4 of ICBO Acceptance Criteria AC148, and
Amend 5 Aug 2011	ii) be compatible with the wall underlay
	<b>COMMENT:</b>
Amend 5 Aug 2011	Dressing the wall underlay around the framing timber and providing a flexible air seal limits airflow around the window reveal.
	The flexible flashing tape keeps any water that does get past the cladding, or through the joinery, from direct contact with the timber.



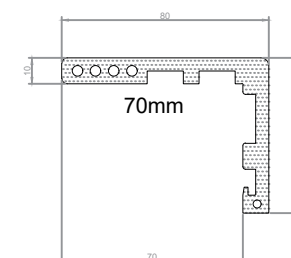
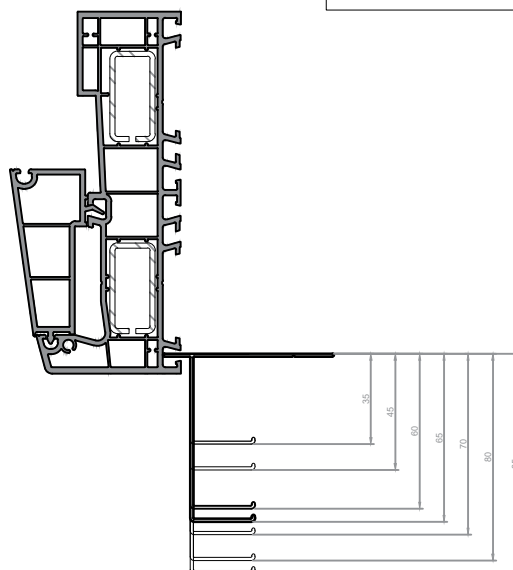
Detail 2

Note: Ensure all exposed timber is covered, particularly in the corners. This may mean the tape has to extend further than nominated.

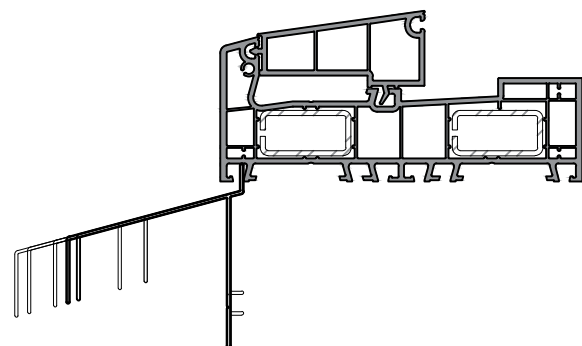
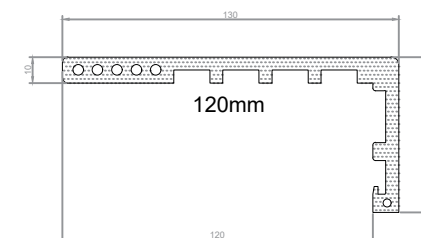
FLASHING KITS	RECOMMENDED CLADDING DIMs	SOME TYPICAL APPLICATIONS
35mm	25 to 29mm	19 Cavity & 9mm Sheet -OR- 19 Cavity & Folded Metal Cladding
45mm	35 to 39mm	19 Cavity & 19mm Sheet -OR- 19 Cavity & Rusticated Weatherboard
60mm	50 to 54mm	19 Cavity & Bevel-Back Weatherboard -OR- 45 Cavity & 9mm Sheet
65mm	55 to 59mm	50 Cavity & 70 Brick -OR- 45 Cavity & Folded Metal Cladding
70mm	60 to 69mm	45 Cavity & 19mm Sheet -OR- 45 Cavity & Rusticated Weatherboard
80mm	70 to 74mm	19 Cavity & Bevel-Back Weatherboard with Facings
85mm	75 to 79mm	45 Cavity & Bevel-Back Weatherboard



700351 35mm Sill Flashing  
 700352 35mm Head Flashing  
 700353 35mm Jamb Flashing  
 700451 45mm Sill Flashing  
 700452 45mm Head Flashing  
 700453 45mm Jamb Flashing  
 700601 60mm Sill Flashing  
 700602 60mm Head Flashing  
 700603 60mm Jamb Flashing  
 700651 65mm Sill Flashing  
 700652 65mm Head Flashing  
 700653 65mm Jamb Flashing  
 700701 70mm Sill Flashing  
 700702 70mm Head Flashing  
 700703 70mm Jamb Flashing  
 700801 80mm Sill Flashing  
 700802 80mm Head Flashing  
 700803 80mm Jamb Flashing  
 700851 85mm Sill Flashing  
 700852 85mm Head Flashing  
 700853 85mm Jamb Flashing



STARKITRAVE - FAST  
ARCHITRAVE & REVEAL SYSTEM



# AMBIANCE

Inline Window Systems

**STÄRKE**

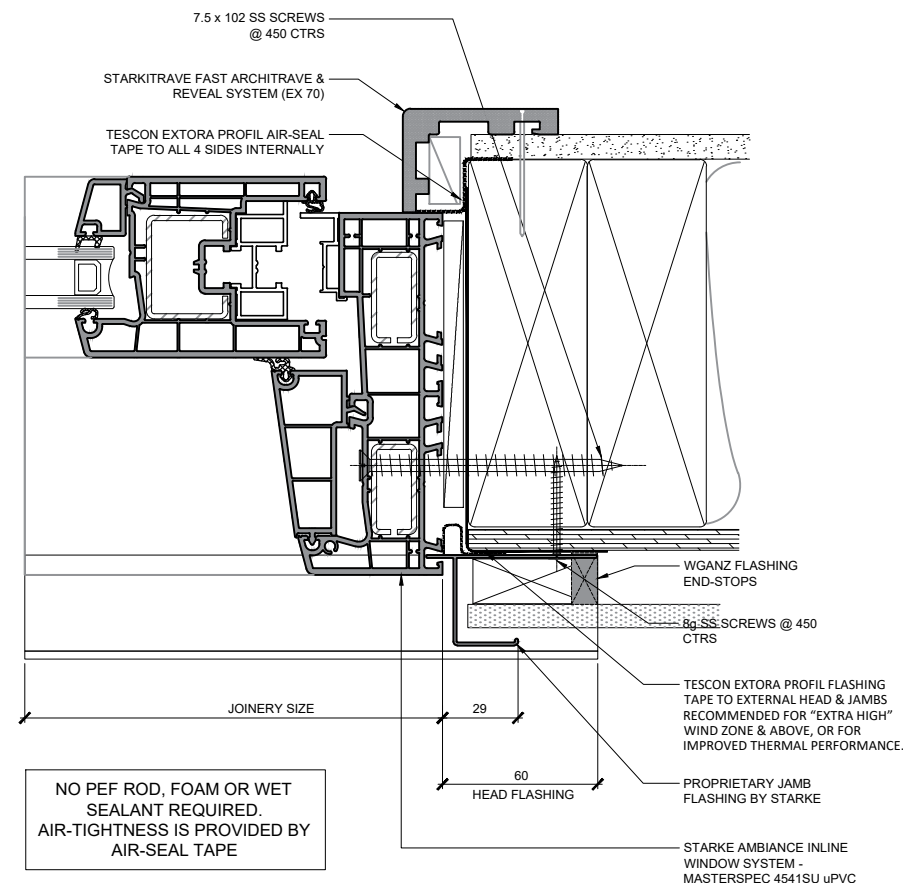
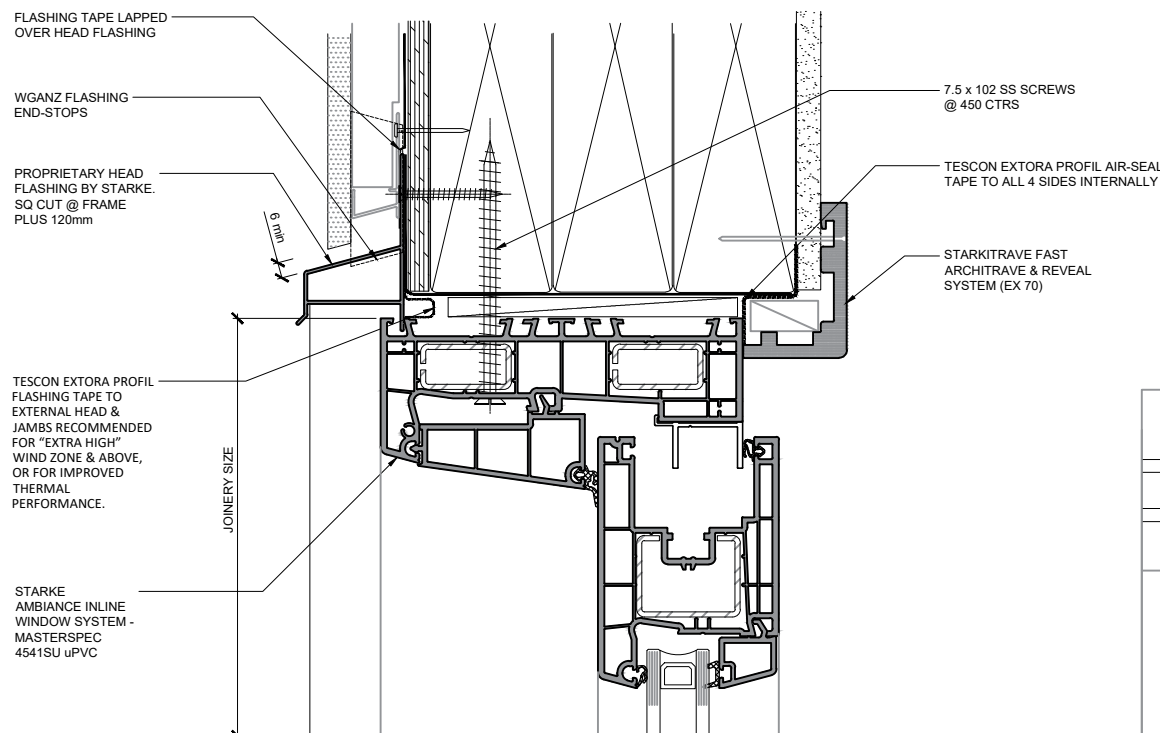
DISCLAIMER: THIS INFORMATION IS FOR GUIDANCE ONLY. STARKE GROUP LIMITED (TRADING AS STÄRKE) MAKES NO WARRANTY OR REPRESENTATION OF ANY KIND, EXPRESS OR IMPLIED, REGARDING THE COMPLETENESS, ACCURACY, RELIABILITY OR SUITABILITY OF THE PRODUCT SHOWN HEREIN. RELIANCE ON THIS INFORMATION IS AT THE CUSTOMER'S SOLE RISK. IT IS RECOMMENDED THAT THE CUSTOMER SEEKS PROFESSIONAL ADVICE ON THE SUITABILITY OF THE PRODUCT FOR SPECIFIC APPLICATIONS. FOR TECHNICAL INFORMATION ON THE PRODUCT, PLEASE CONTACT STÄRKE.



140mm Framing / RAB / 9mm Cladding on cavity

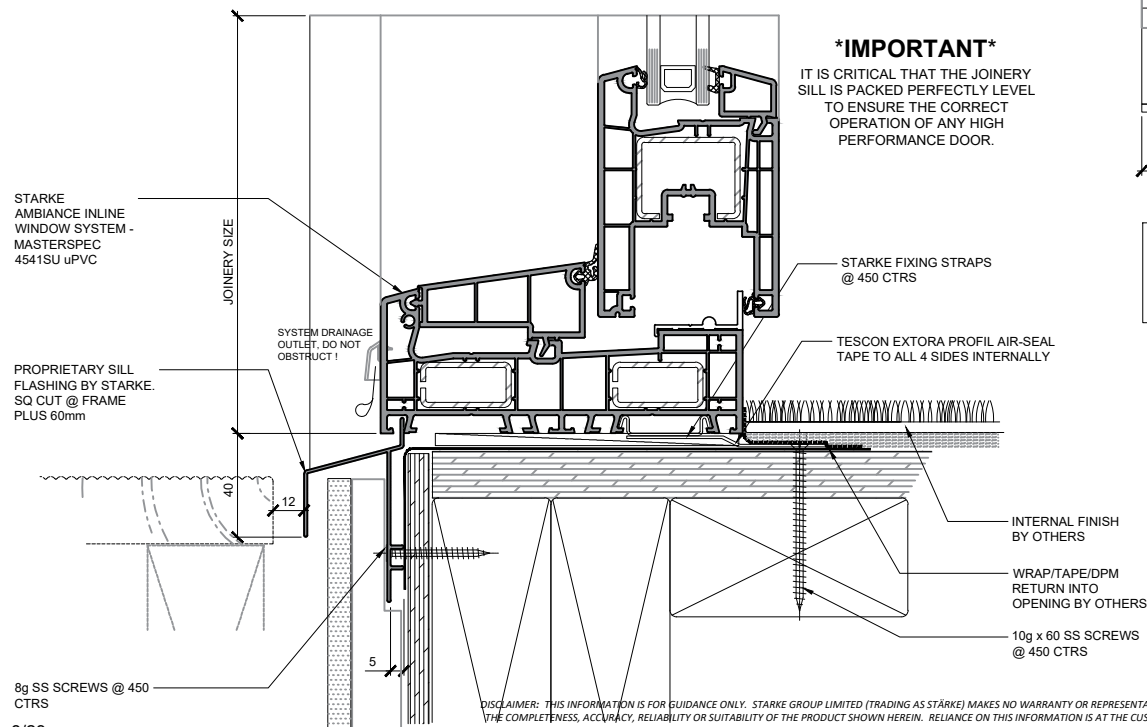
Smartslide

Timber mid-floor, Non-rebated



### \*IMPORTANT\*

IT IS CRITICAL THAT THE JOINERY SILL IS PACKED PERFECTLY LEVEL TO ENSURE THE CORRECT OPERATION OF ANY HIGH PERFORMANCE DOOR.



DISCLAIMER: THIS INFORMATION IS FOR GUIDANCE ONLY. STARKE GROUP LIMITED (TRADING AS STÄRKE) MAKES NO WARRANTY OR REPRESENTATION OF ANY KIND, EXPRESS OR IMPLIED, REGARDING THE COMPLETENESS, ACCURACY, RELIABILITY OR SUITABILITY OF THE PRODUCT SHOWN HEREIN. RELIANCE ON THIS INFORMATION IS AT THE CUSTOMER'S SOLE RISK. IT IS RECOMMENDED THAT THE CUSTOMER SEEKS PROFESSIONAL ADVICE ON THE SUITABILITY OF THE PRODUCT FOR SPECIFIC APPLICATIONS. FOR TECHNICAL INFORMATION ON THE PRODUCT, PLEASE CONTACT STÄRKE.

# AMBIANCE

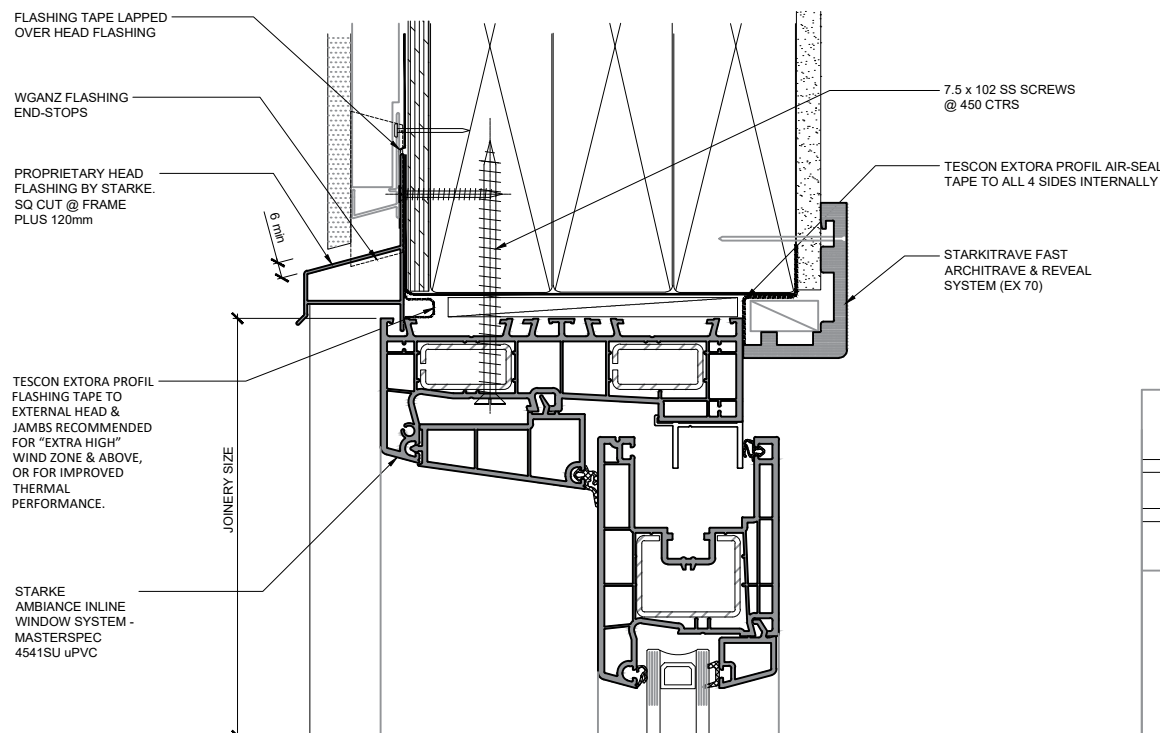
Inline Window Systems

**STÄRKE**

140mm Framing / RAB / 9mm Cladding on cavity

Smartslide

Timber mid-floor, Semi-rebated



STARKE  
AMBIANCE INLINE  
WINDOW SYSTEM -  
MASTERSPEC  
4541SU uPVC

STARKE  
AMBIANCE INLINE  
WINDOW SYSTEM -  
MASTERSPEC  
4541SU uPVC

PROPRIETARY SILL  
FLASHING BY STARKE.  
SQ CUT @ FRAME  
PLUS 60mm

8g SS SCREWS @ 450  
CTRS

### \*IMPORTANT\*

IT IS CRITICAL THAT THE JOINERY  
SILL IS PACKED PERFECTLY LEVEL  
TO ENSURE THE CORRECT  
OPERATION OF ANY HIGH  
PERFORMANCE DOOR.

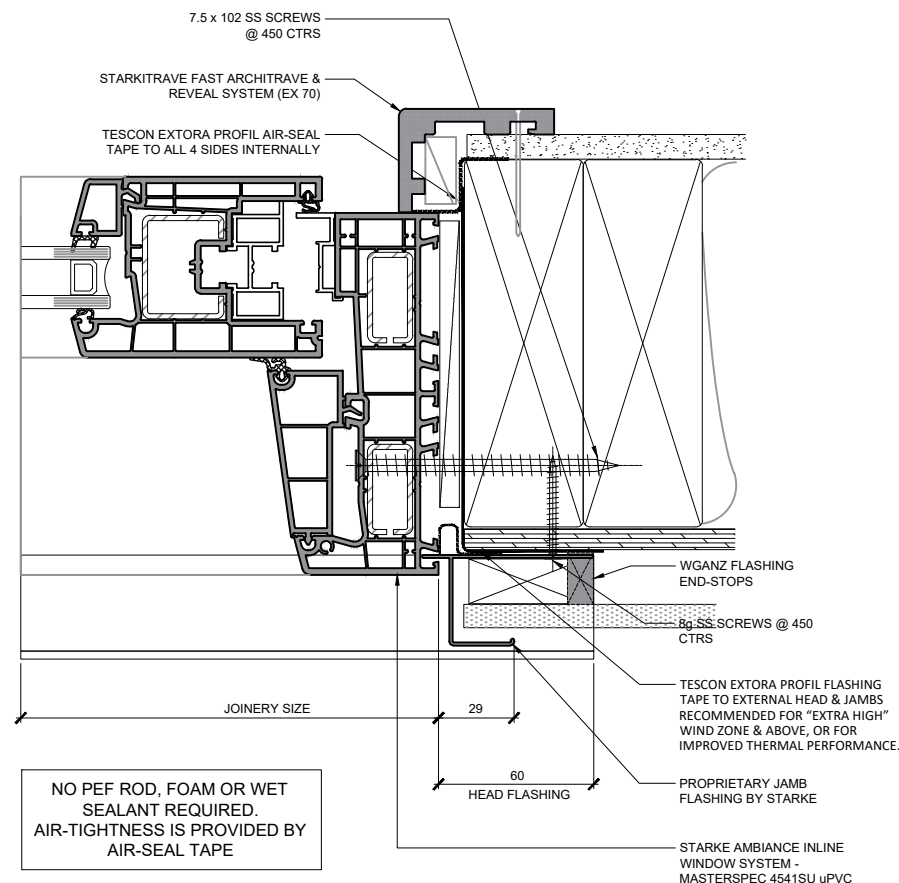
STARKE FIXING STRAPS  
@ 450 CTRS

TESCON EXTORA PROFIL AIR-SEAL  
TAPE TO ALL 4 SIDES INTERNALLY

INFILL BY OTHERS

WRAP/TAPE/DPM  
RETURN INTO  
OPENING BY OTHERS

10g x 60 SS SCREWS  
@ 450 CTRS



NO PEF ROD, FOAM OR WET  
SEALANT REQUIRED.  
AIR-TIGHTNESS IS PROVIDED BY  
AIR-SEAL TAPE

WGANZ FLASHING  
END-STOPS  
8g SS SCREWS @ 450  
CTRS

TESCON EXTORA PROFIL FLASHING  
TAPE TO EXTERNAL HEAD & JAMBS  
RECOMMENDED FOR "EXTRA HIGH"  
WIND ZONE & ABOVE, OR FOR  
IMPROVED THERMAL PERFORMANCE.

PROPRIETARY JAMB  
FLASHING BY STARKE

STARKE AMBIANCE INLINE  
WINDOW SYSTEM -  
MASTERSPEC 4541SU uPVC

# AMBIANCE

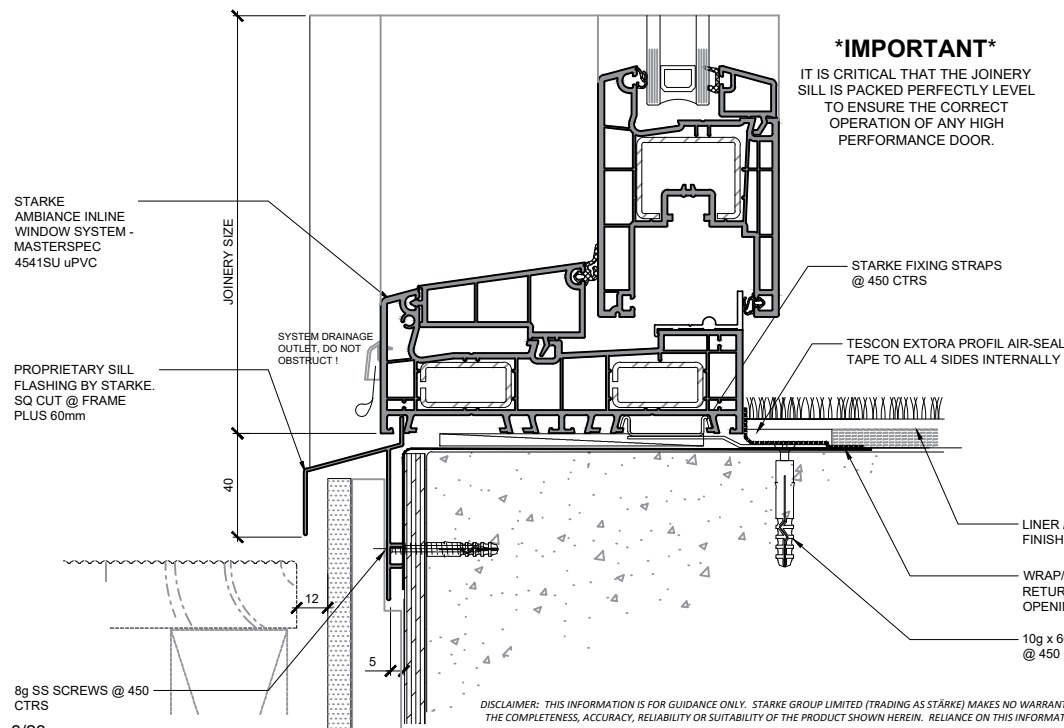
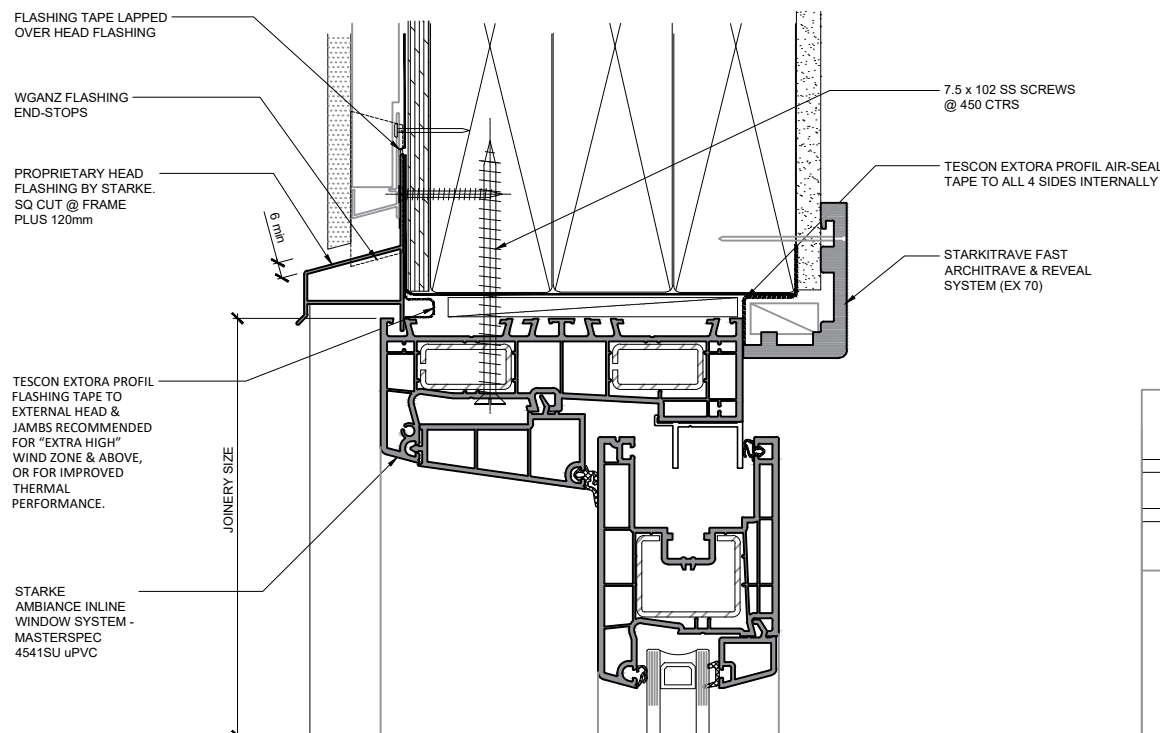
Inline Window Systems

# STÄRKE

140mm Framing / RAB / 9mm Cladding on cavity

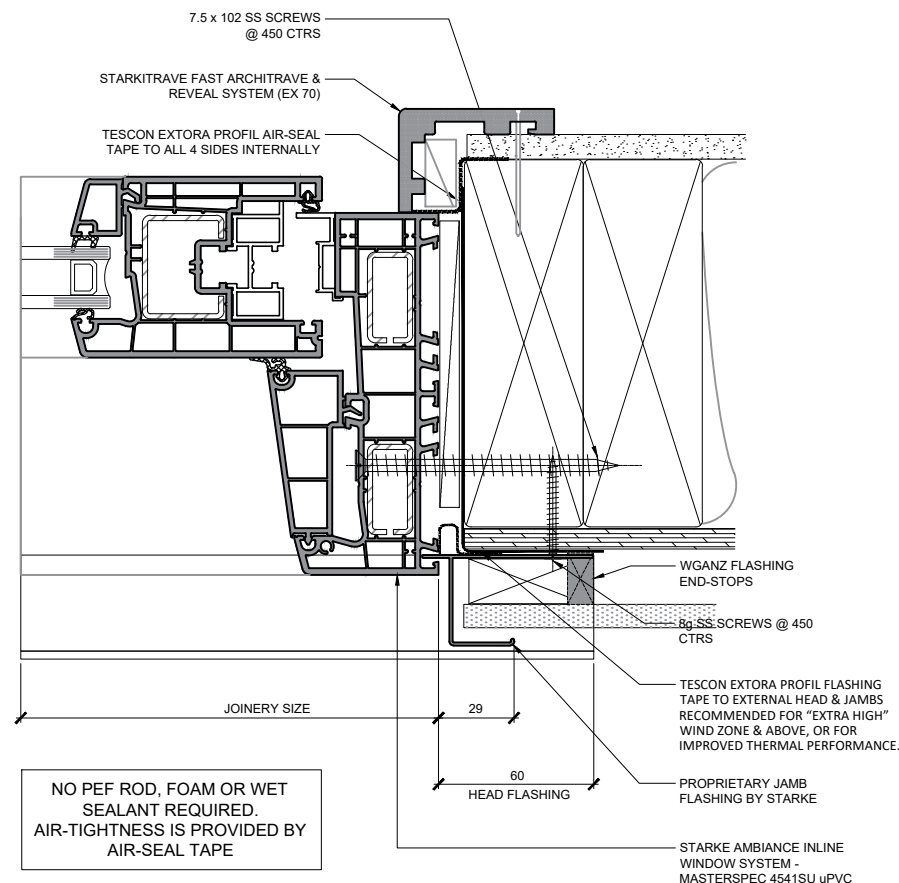
Smartslide

Concrete mid floor, Non-rebated



**\*IMPORTANT\***

IT IS CRITICAL THAT THE JOINERY SILL IS PACKED PERFECTLY LEVEL TO ENSURE THE CORRECT OPERATION OF ANY HIGH PERFORMANCE DOOR.



# AMBIANCE

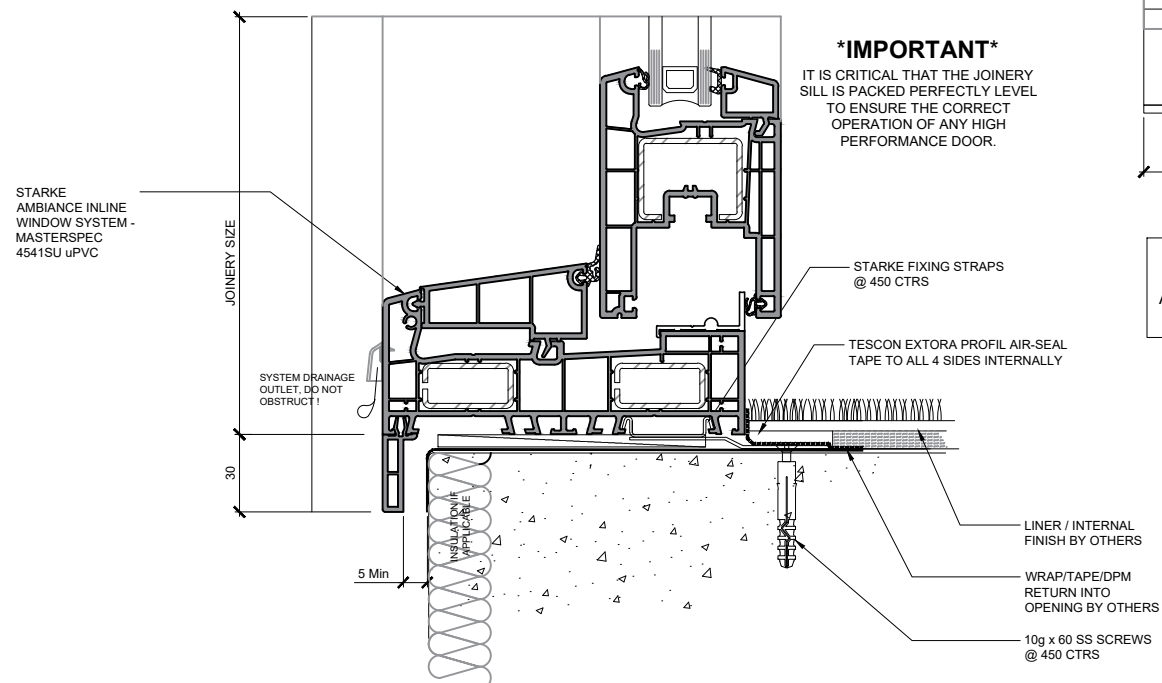
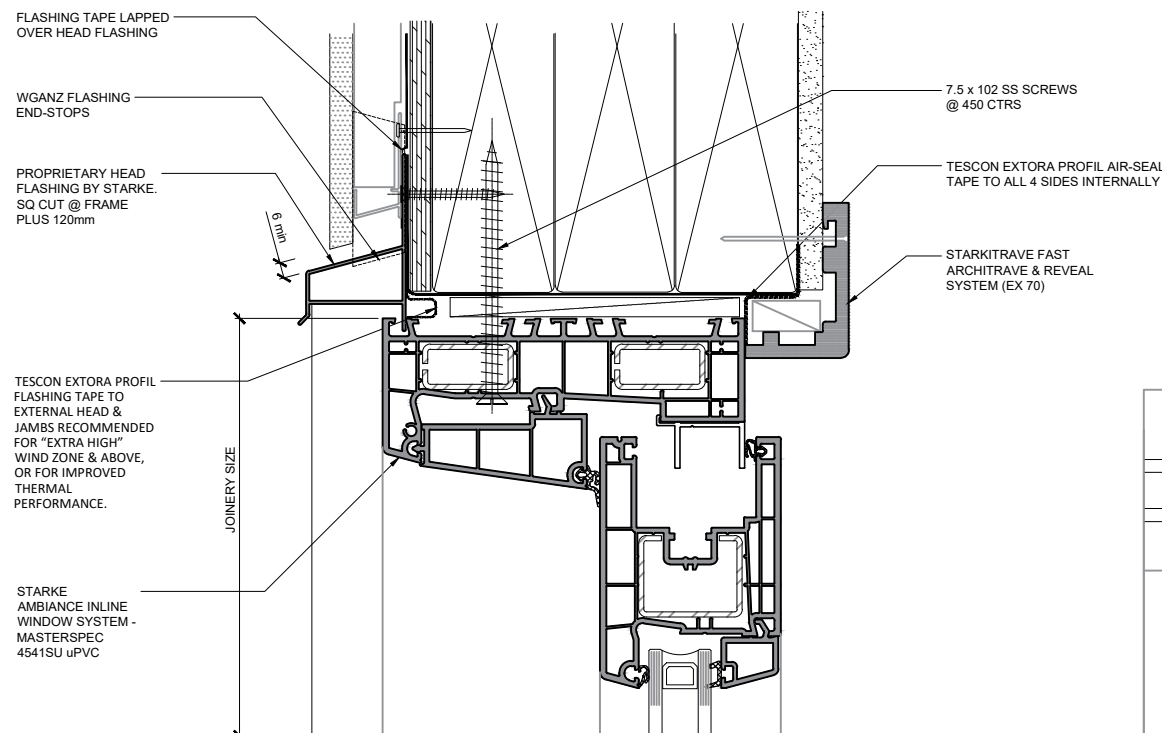
Inline Window Systems

**STÄRKE**

140mm Framing / RAB / 9mm Cladding on cavity

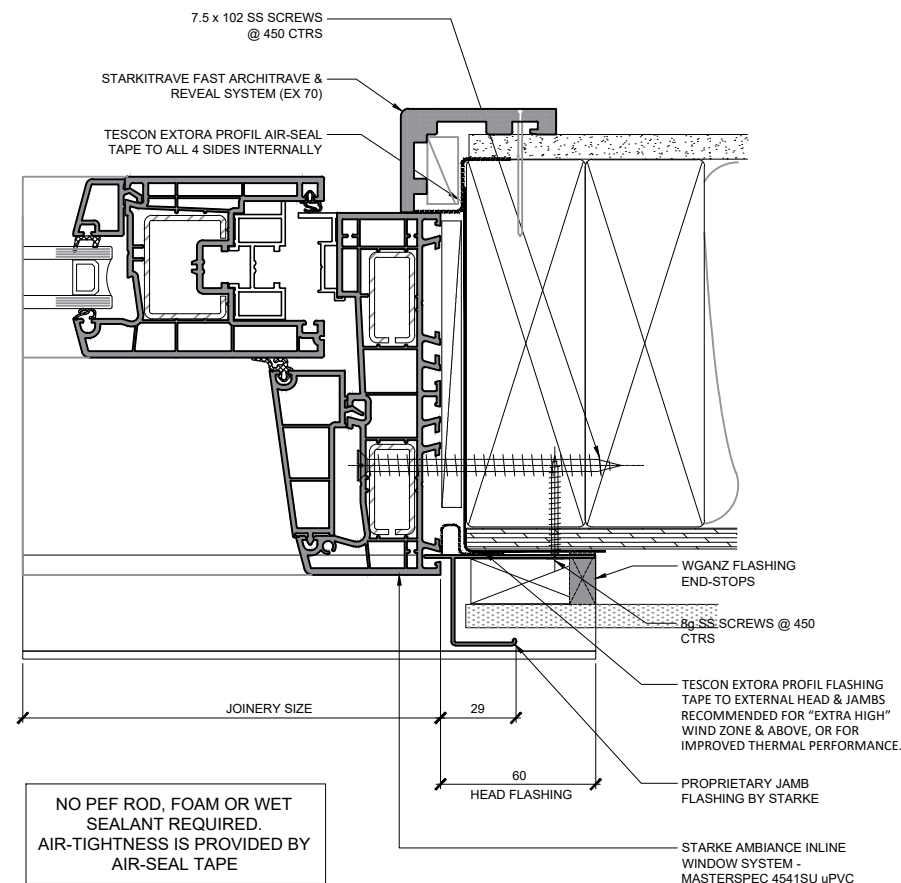
Smartslide

Concrete ground floor, Non-rebated



### \*IMPORTANT\*

IT IS CRITICAL THAT THE JOINERY SILL IS PACKED PERFECTLY LEVEL TO ENSURE THE CORRECT OPERATION OF ANY HIGH PERFORMANCE DOOR.

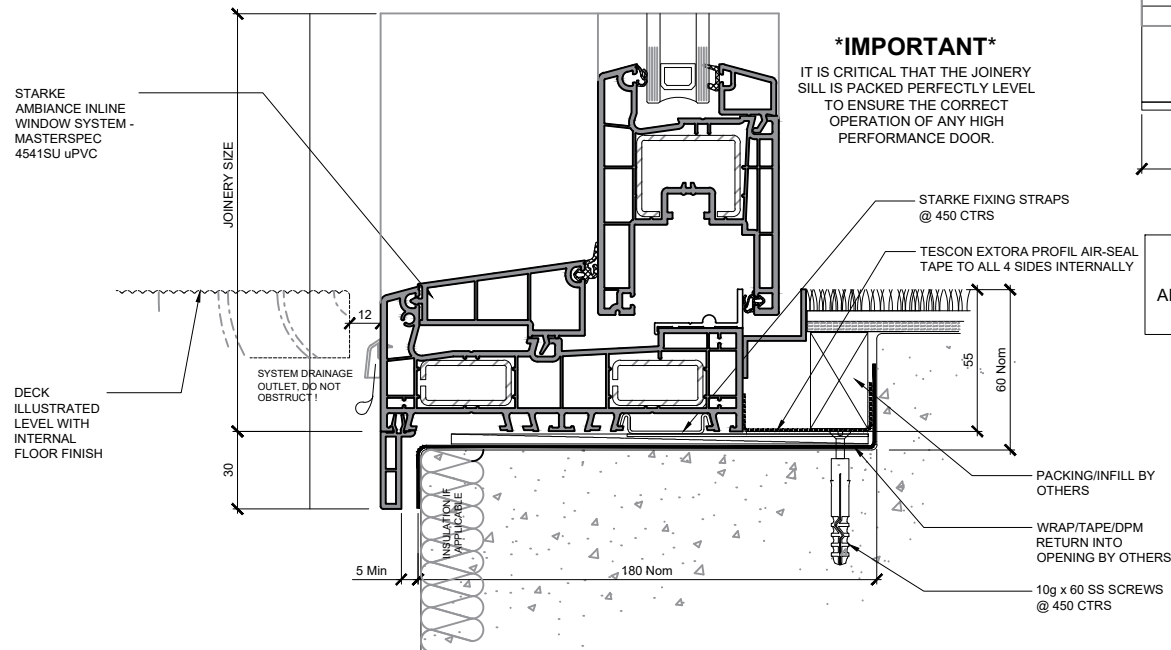
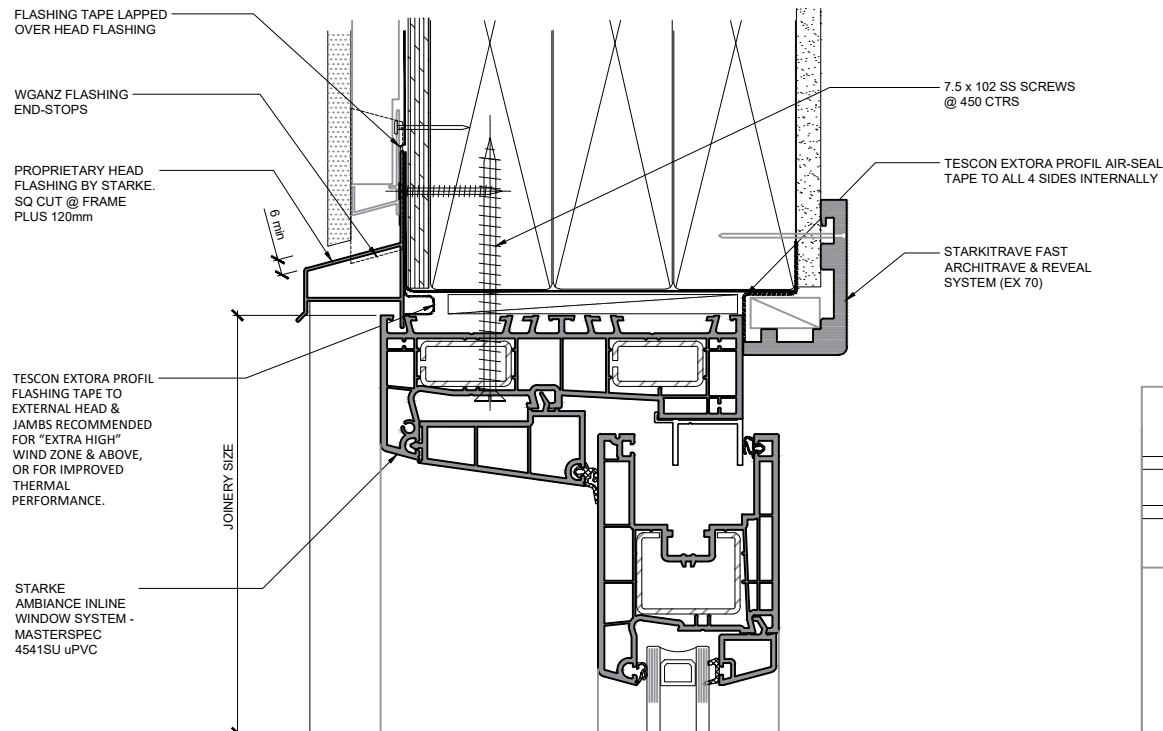


NO PEF ROD, FOAM OR WET SEALANT REQUIRED. AIR-TIGHTNESS IS PROVIDED BY AIR-SEAL TAPE

# AMBIANCE

Inline Window Systems

# STÄRKE



### \*IMPORTANT\*

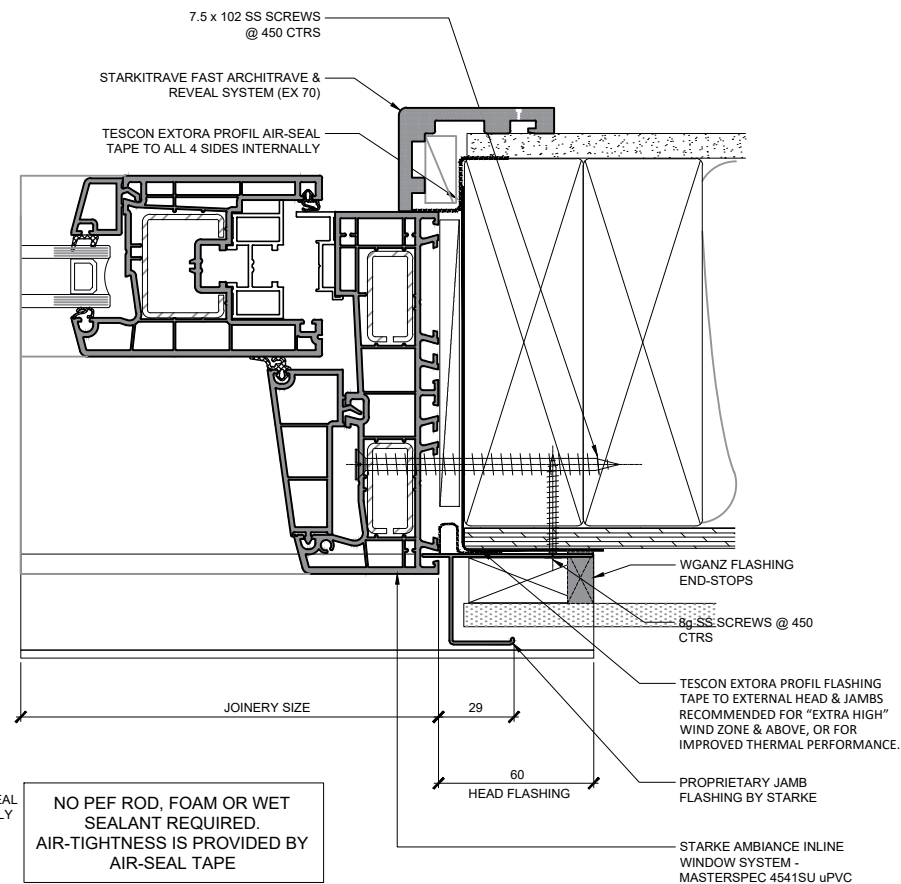
IT IS CRITICAL THAT THE JOINERY SILL IS PACKED PERFECTLY LEVEL TO ENSURE THE CORRECT OPERATION OF ANY HIGH PERFORMANCE DOOR.

NO PEF ROD, FOAM OR WET SEALANT REQUIRED. AIR-TIGHTNESS IS PROVIDED BY AIR-SEAL TAPE

140mm Framing / RAB / 9mm Cladding on cavity

Smartslide

Concrete ground floor, Fully-rebated



# AMBIANCE

Inline Window Systems

# STÄRKE

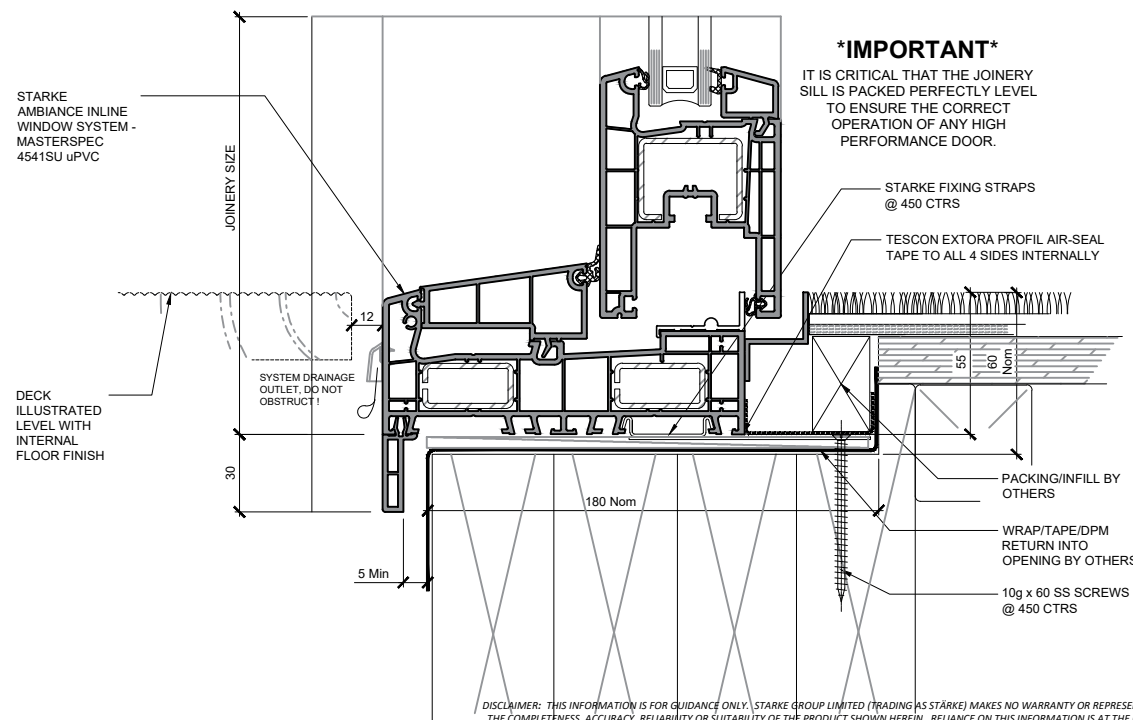
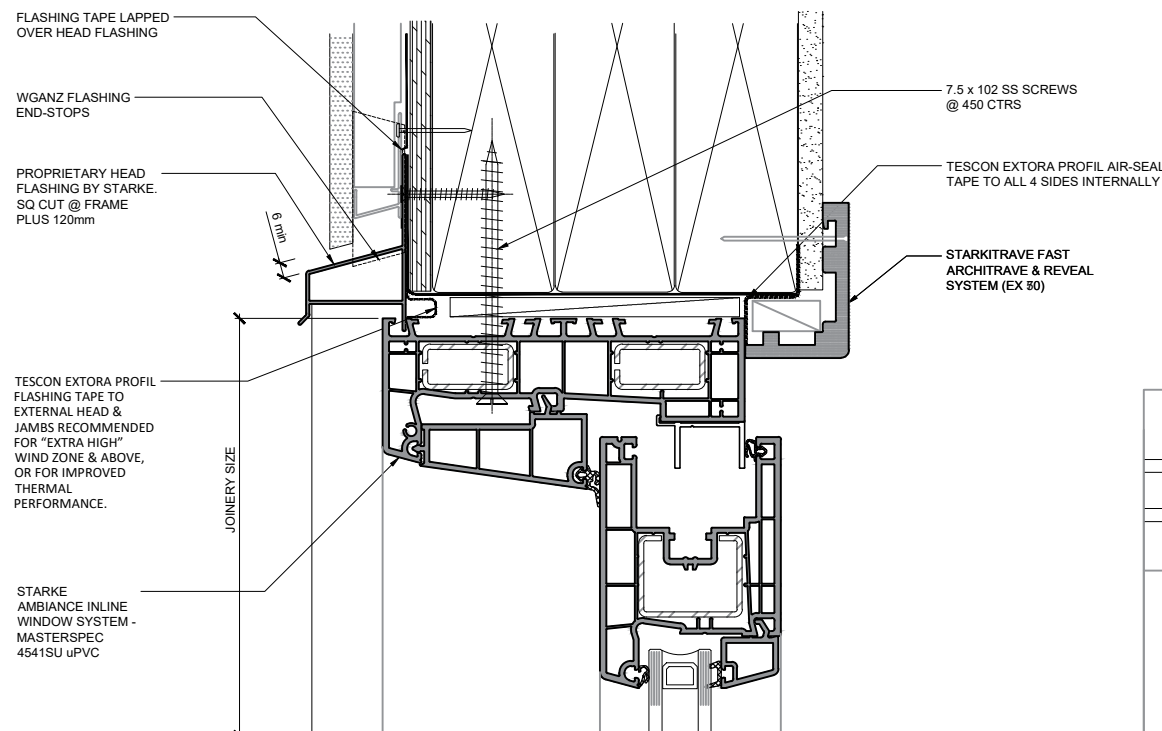
DISCLAIMER: THIS INFORMATION IS FOR GUIDANCE ONLY. STARKE GROUP LIMITED (TRADING AS STÄRKE) MAKES NO WARRANTY OR REPRESENTATION OF ANY KIND, EXPRESS OR IMPLIED, REGARDING THE COMPLETENESS, ACCURACY, RELIABILITY OR SUITABILITY OF THE PRODUCT SHOWN HEREIN. RELIANCE ON THIS INFORMATION IS AT THE CUSTOMER'S SOLE RISK. IT IS RECOMMENDED THAT THE CUSTOMER SEEKS PROFESSIONAL ADVICE ON THE SUITABILITY OF THE PRODUCT FOR SPECIFIC APPLICATIONS. FOR TECHNICAL INFORMATION ON THE PRODUCT, PLEASE CONTACT STÄRKE.



140mm Framing / RAB / 9mm Cladding on cavity

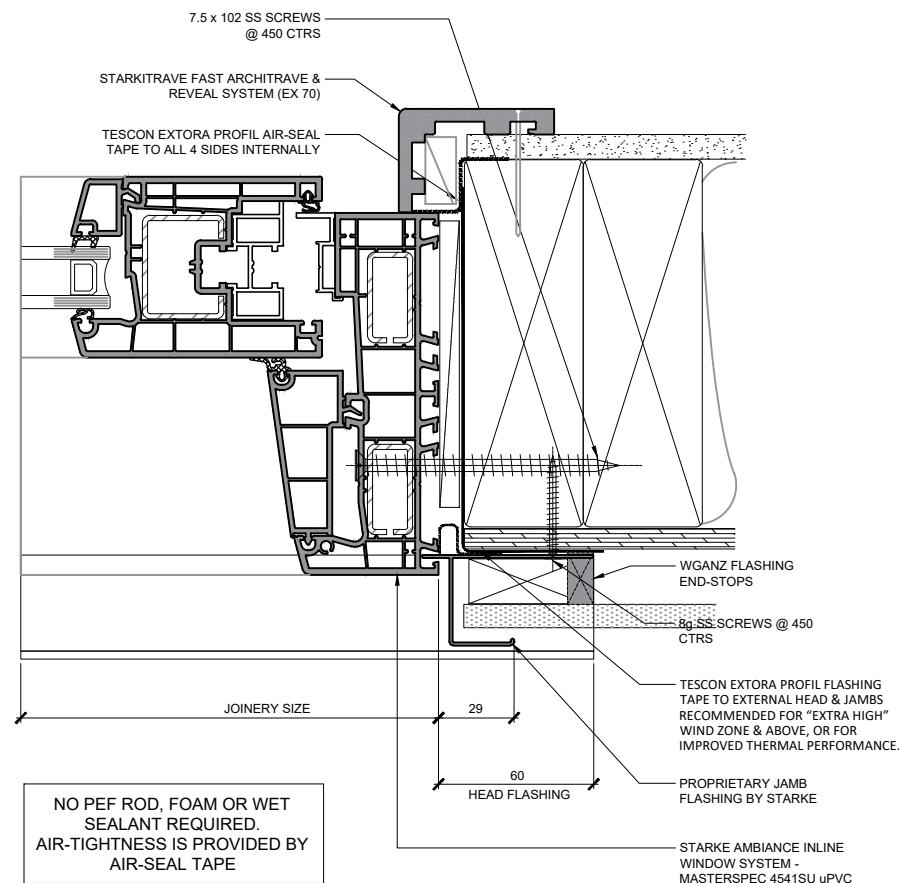
Smartslide

Timber ground floor, Fully-rebated



### \*IMPORTANT\*

IT IS CRITICAL THAT THE JOINERY SILL IS PACKED PERFECTLY LEVEL TO ENSURE THE CORRECT OPERATION OF ANY HIGH PERFORMANCE DOOR.



# AMBIANCE

Inline Window Systems

**STÄRKE**

140mm Framing / RAB / 19mm Cladding on cavity

Smartslide

Timber mid-floor, Non-rebated

FLASHING TAPE LAPPED  
OVER HEAD FLASHING

WGANZ FLASHING  
END-STOPS

PROPRIETARY HEAD  
FLASHING BY STARKE.  
SQ CUT @ FRAME  
PLUS 120mm

TESCON EXTORA PROFIL  
FLASHING TAPE TO  
EXTERNAL HEAD & JAMBS  
RECOMMENDED FOR  
"EXTRA HIGH" WIND  
ZONE & ABOVE, OR FOR  
IMPROVED THERMAL  
PERFORMANCE.

STARKE  
AMBIANCE INLINE  
WINDOW SYSTEM -  
MASTERSPEC  
4541SU uPVC

JOINERY SIZE

7.5 x 102 SS SCREWS  
@ 450 CTRS

TESCON EXTORA PROFIL AIR-SEAL  
TAPE TO ALL 4 SIDES INTERNALLY

STARKITRAVE FAST  
ARCHITRAVE & REVEAL  
SYSTEM (EX 70)

7.5 x 102 SS SCREWS  
@ 450 CTRS

STARKITRAVE FAST ARCHITRAVE &  
REVEAL SYSTEM (EX 70)

TESCON EXTORA PROFIL AIR-SEAL  
TAPE TO ALL 4 SIDES INTERNALLY

WGANZ FLASHING  
END-STOPS

8g SS SCREWS @ 450  
CTRS

TESCON EXTORA PROFIL FLASHING  
TAPE TO EXTERNAL HEAD & JAMBS  
RECOMMENDED FOR "EXTRA HIGH"  
WIND ZONE & ABOVE, OR FOR  
IMPROVED THERMAL PERFORMANCE.

PROPRIETARY JAMB  
FLASHING BY STARKE

STARKE AMBIANCE INLINE  
WINDOW SYSTEM -  
MASTERSPEC 4541SU uPVC

JOINERY SIZE

29

60

HEAD FLASHING

NO PEF ROD, FOAM OR WET  
SEALANT REQUIRED.  
AIR-TIGHTNESS IS PROVIDED BY  
AIR-SEAL TAPE

### \*IMPORTANT\*

IT IS CRITICAL THAT THE JOINERY  
SILL IS PACKED PERFECTLY LEVEL  
TO ENSURE THE CORRECT  
OPERATION OF ANY HIGH  
PERFORMANCE DOOR.

STARKE FIXING STRAPS  
@ 450 CTRS

TESCON EXTORA PROFIL AIR-SEAL  
TAPE TO ALL 4 SIDES INTERNALLY

STARKE  
AMBIANCE INLINE  
WINDOW SYSTEM -  
MASTERSPEC  
4541SU uPVC

JOINERY SIZE

SYSTEM DRAINAGE  
OUTLET. DO NOT  
OBSTRUCT!

PROPRIETARY SILL  
FLASHING BY STARKE.  
SQ CUT @ FRAME  
PLUS 60mm

8g SS SCREWS @ 450  
CTRS

INTERNAL FINISH  
BY OTHERS

WRAP/TAPE/DPM  
RETURN INTO  
OPENING BY OTHERS

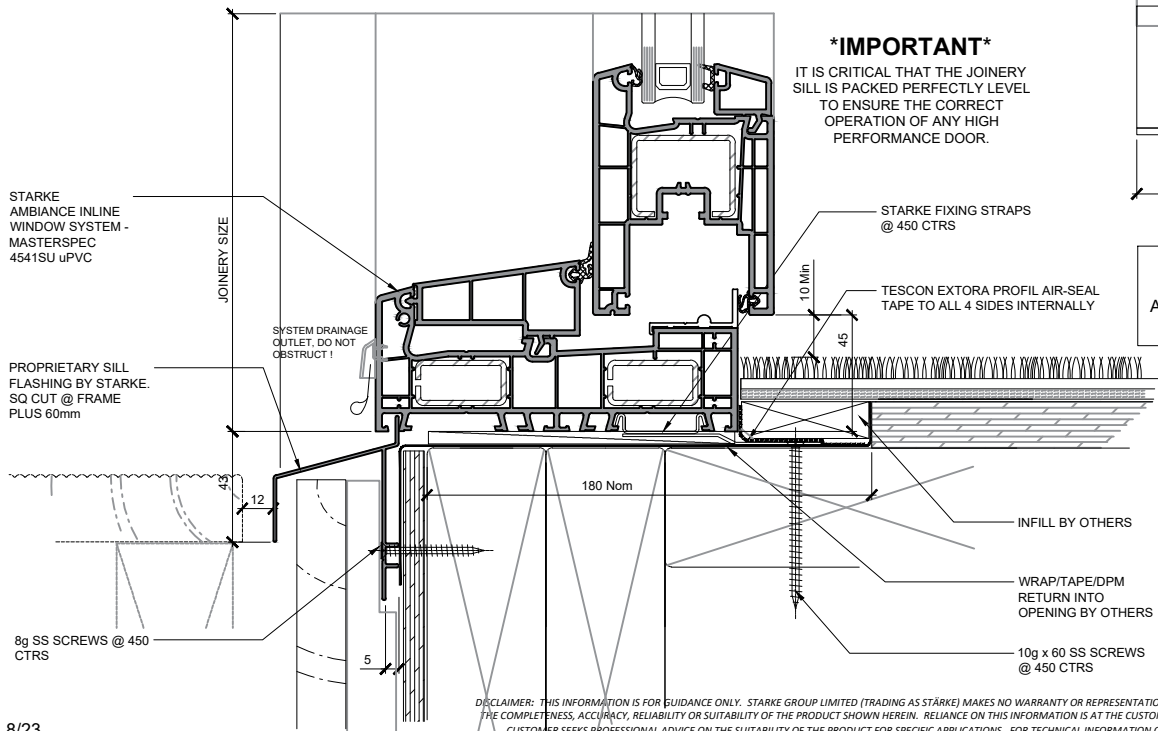
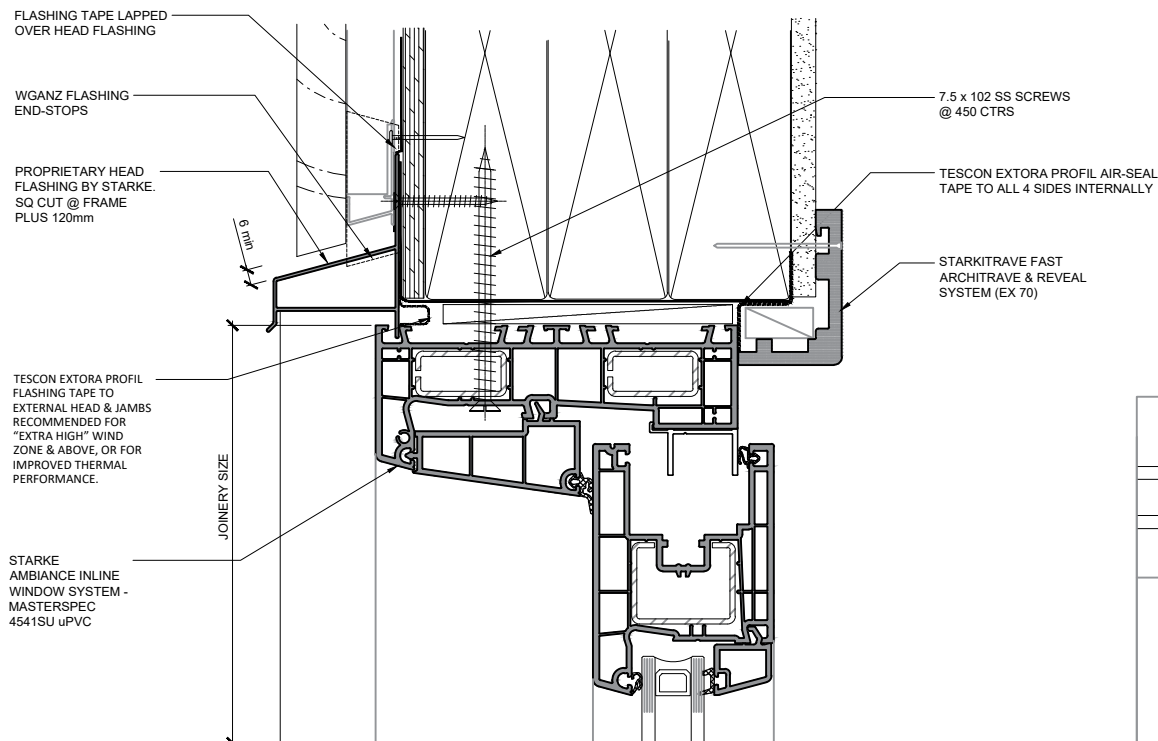
10g x 60 SS SCREWS  
@ 450 CTRS

DISCLAIMER: THIS INFORMATION IS FOR GUIDANCE ONLY. STARKE GROUP LIMITED (TRADING AS STÄRKE) MAKES NO WARRANTY OR REPRESENTATION OF ANY KIND, EXPRESS OR IMPLIED, REGARDING THE COMPLETENESS, ACCURACY, RELIABILITY OR SUITABILITY OF THE PRODUCT SHOWN HEREIN. RELIANCE ON THIS INFORMATION IS AT THE CUSTOMER'S SOLE RISK. IT IS RECOMMENDED THAT THE CUSTOMER SEEKS PROFESSIONAL ADVICE ON THE SUITABILITY OF THE PRODUCT FOR SPECIFIC APPLICATIONS. FOR TECHNICAL INFORMATION ON THE PRODUCT, PLEASE CONTACT STÄRKE.

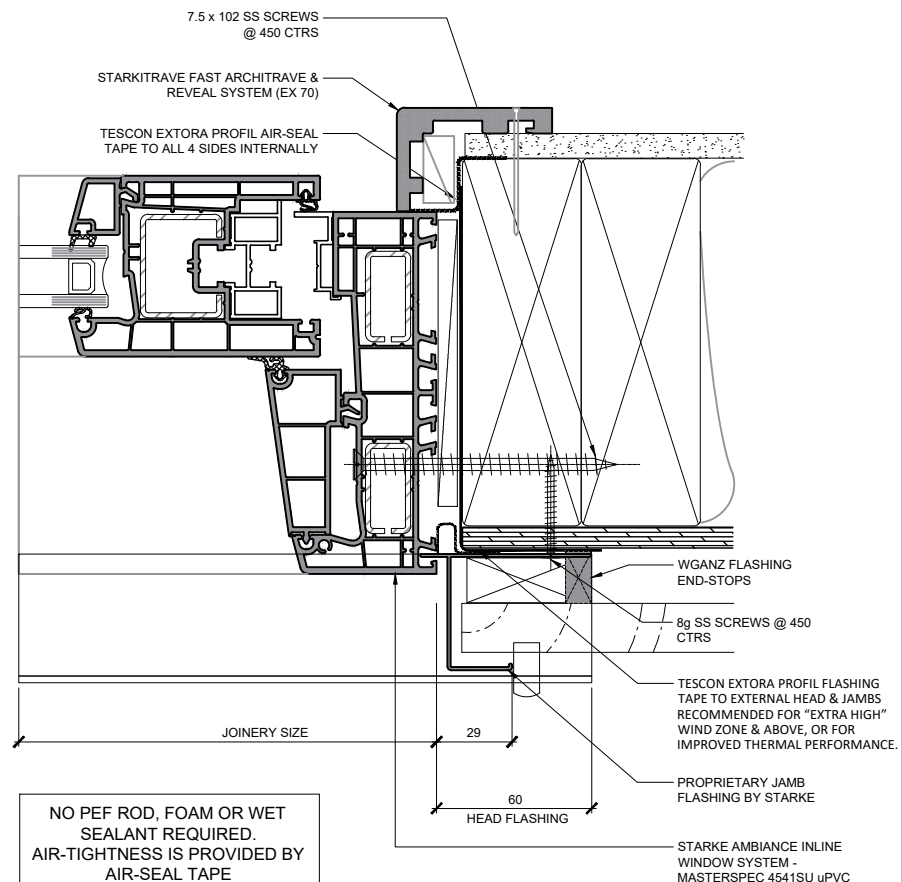
# AMBIANCE

Inline Window Systems

# STÄRKE



**\*IMPORTANT\***  
IT IS CRITICAL THAT THE JOINERY SILL IS PACKED PERFECTLY LEVEL TO ENSURE THE CORRECT OPERATION OF ANY HIGH PERFORMANCE DOOR.



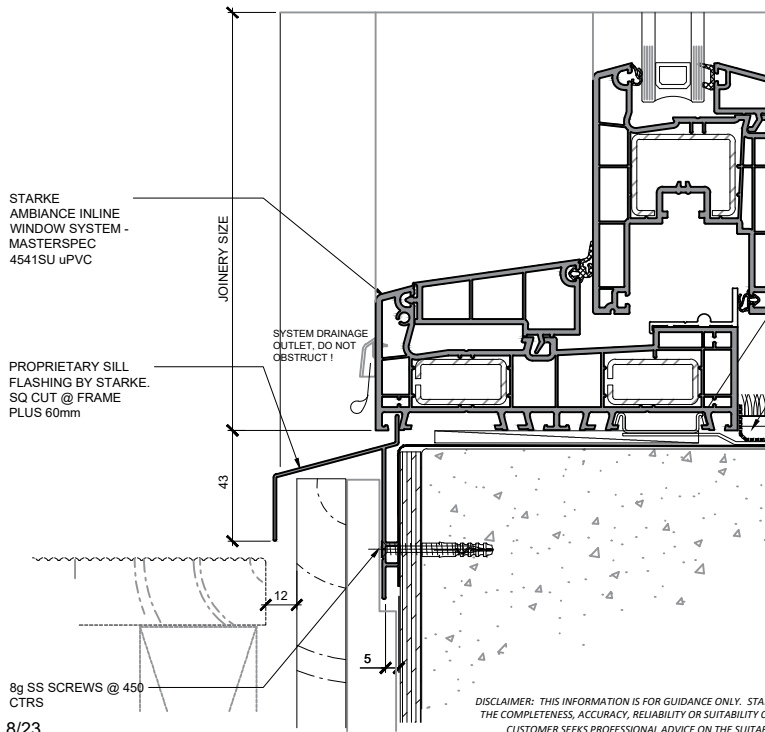
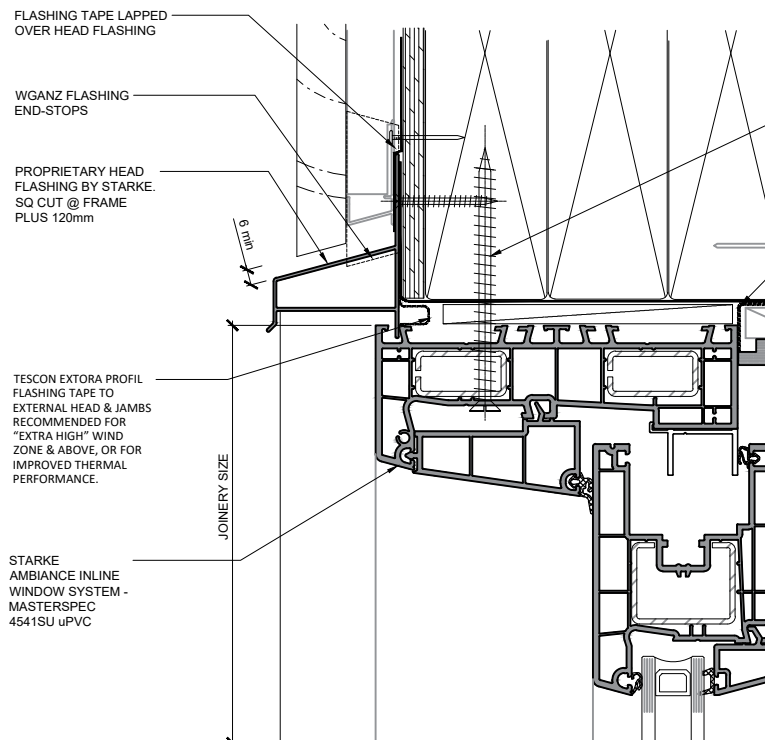
NO PEF ROD, FOAM OR WET SEALANT REQUIRED.  
AIR-TIGHTNESS IS PROVIDED BY AIR-SEAL TAPE

140mm Framing / RAB / 19mm Cladding on cavity
Smartslide
Timber mid-floor, Semi-rebated

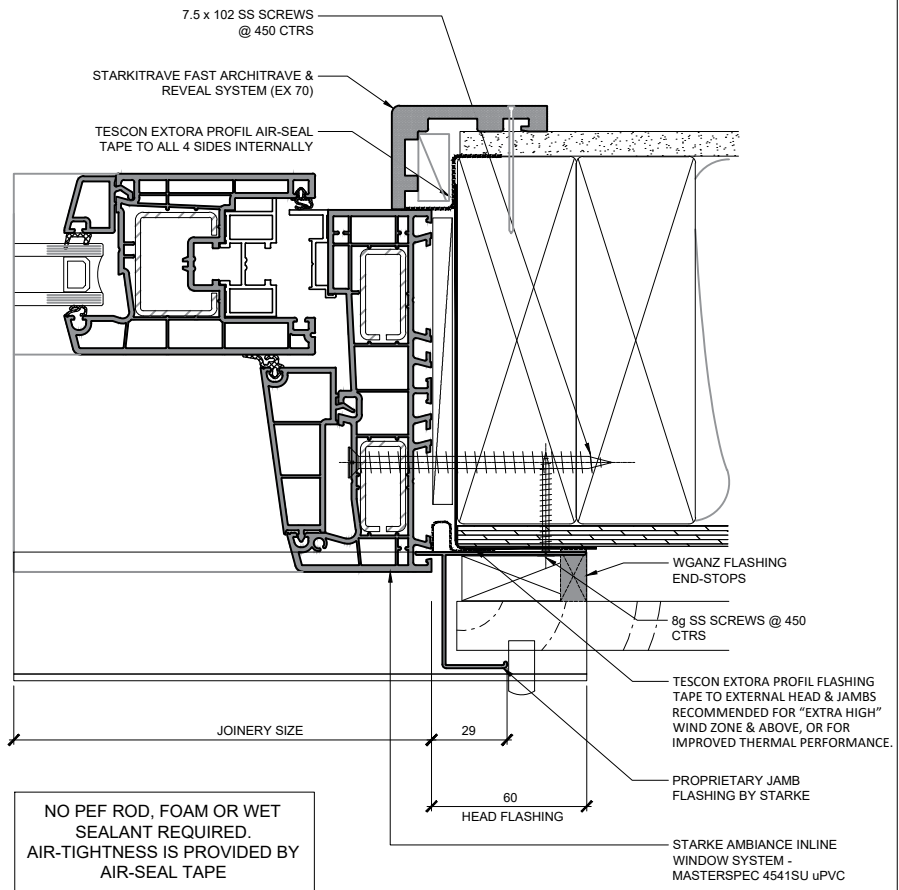
**AMBIANCE**  
Inline Window Systems  
**STÄRKE**

DISCLAIMER: THIS INFORMATION IS FOR GUIDANCE ONLY. STARKE GROUP LIMITED (TRADING AS STÄRKE) MAKES NO WARRANTY OR REPRESENTATION OF ANY KIND, EXPRESS OR IMPLIED, REGARDING THE COMPLETENESS, ACCURACY, RELIABILITY OR SUITABILITY OF THE PRODUCT SHOWN HEREIN. RELIANCE ON THIS INFORMATION IS AT THE CUSTOMER'S SOLE RISK. IT IS RECOMMENDED THAT THE CUSTOMER SEEKS PROFESSIONAL ADVICE ON THE SUITABILITY OF THE PRODUCT FOR SPECIFIC APPLICATIONS. FOR TECHNICAL INFORMATION ON THE PRODUCT, PLEASE CONTACT STÄRKE.





**\*IMPORTANT\***  
IT IS CRITICAL THAT THE JOINERY SILL IS PACKED PERFECTLY LEVEL TO ENSURE THE CORRECT OPERATION OF ANY HIGH PERFORMANCE DOOR.

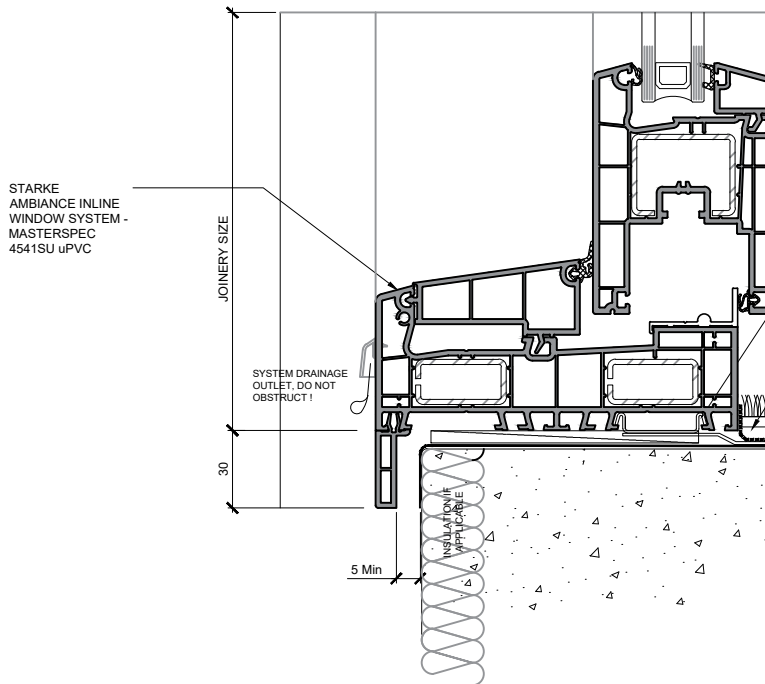
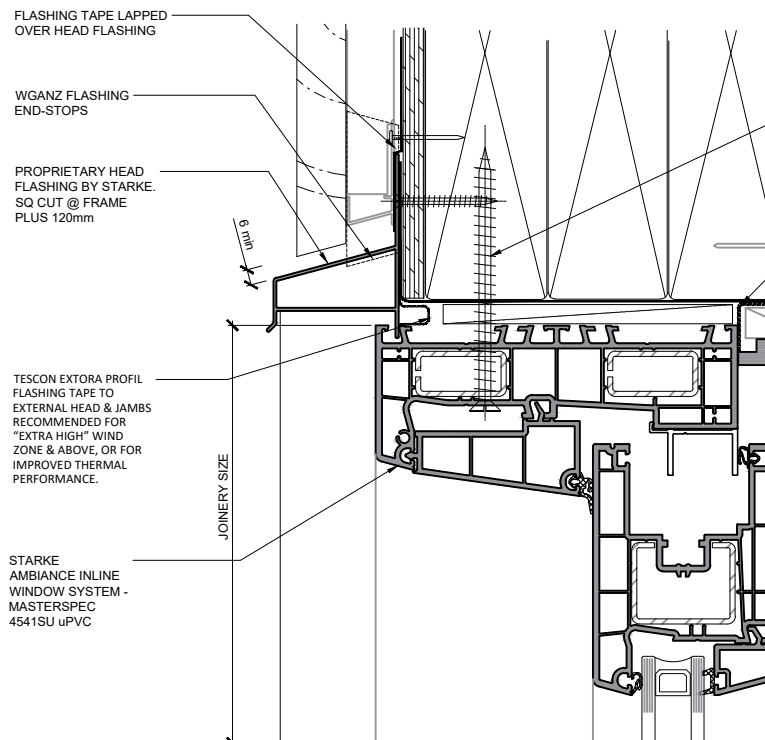


NO PEF ROD, FOAM OR WET SEALANT REQUIRED.  
AIR-TIGHTNESS IS PROVIDED BY AIR-SEAL TAPE

140mm Framing / RAB / 19mm Cladding on cavity
Smartslide
Concrete mid floor, Non-rebated

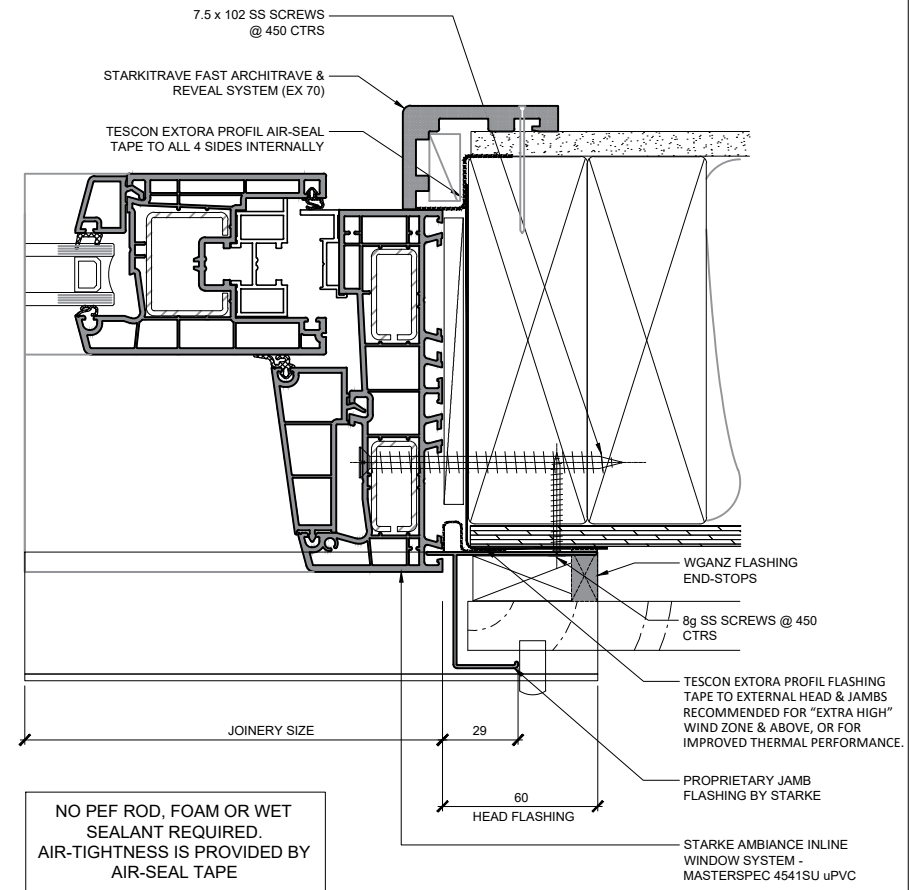
**AMBIANCE**  
Inline Window Systems  
**STÄRKE**

DISCLAIMER: THIS INFORMATION IS FOR GUIDANCE ONLY. STARKE GROUP LIMITED (TRADING AS STÄRKE) MAKES NO WARRANTY OR REPRESENTATION OF ANY KIND, EXPRESS OR IMPLIED, REGARDING THE COMPLETENESS, ACCURACY, RELIABILITY OR SUITABILITY OF THE PRODUCT SHOWN HEREIN. RELIANCE ON THIS INFORMATION IS AT THE CUSTOMER'S SOLE RISK. IT IS RECOMMENDED THAT THE CUSTOMER SEEKS PROFESSIONAL ADVICE ON THE SUITABILITY OF THE PRODUCT FOR SPECIFIC APPLICATIONS. FOR TECHNICAL INFORMATION ON THE PRODUCT, PLEASE CONTACT STÄRKE.



**\*IMPORTANT\***  
IT IS CRITICAL THAT THE JOINERY SILL IS PACKED PERFECTLY LEVEL TO ENSURE THE CORRECT OPERATION OF ANY HIGH PERFORMANCE DOOR.

140mm Framing / RAB / 19mm Cladding on cavity
Smartslide
Concrete ground floor, Non-rebated



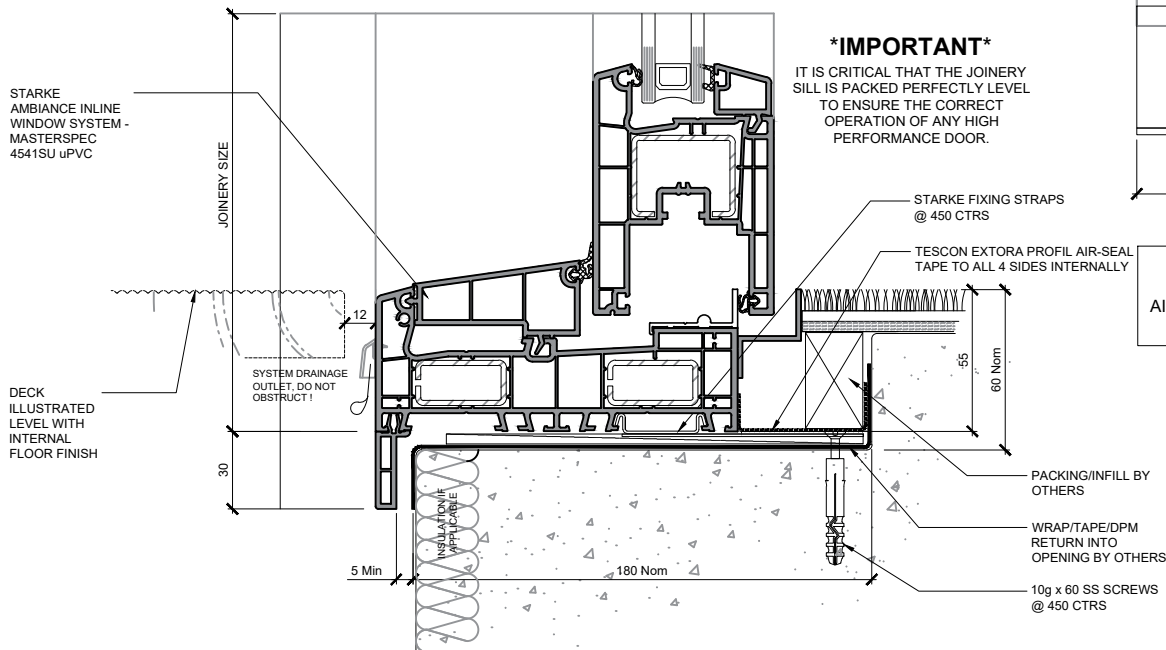
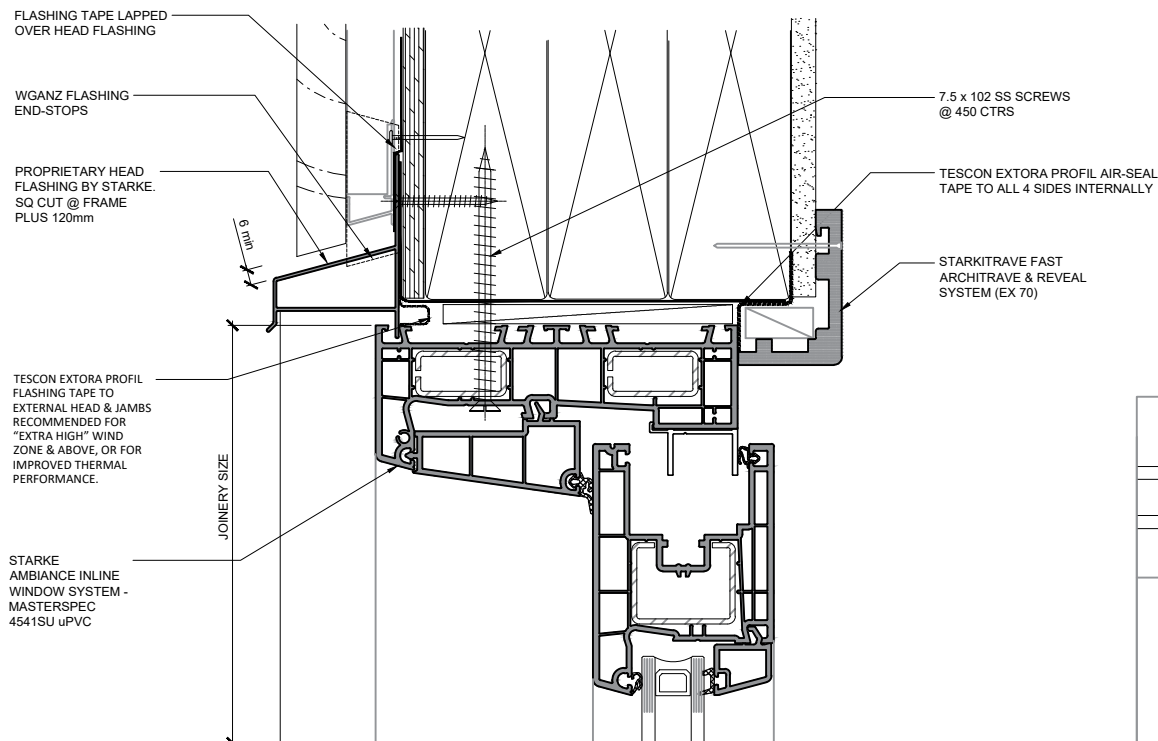
NO PEF ROD, FOAM OR WET SEALANT REQUIRED.  
AIR-TIGHTNESS IS PROVIDED BY AIR-SEAL TAPE

# AMBIANCE

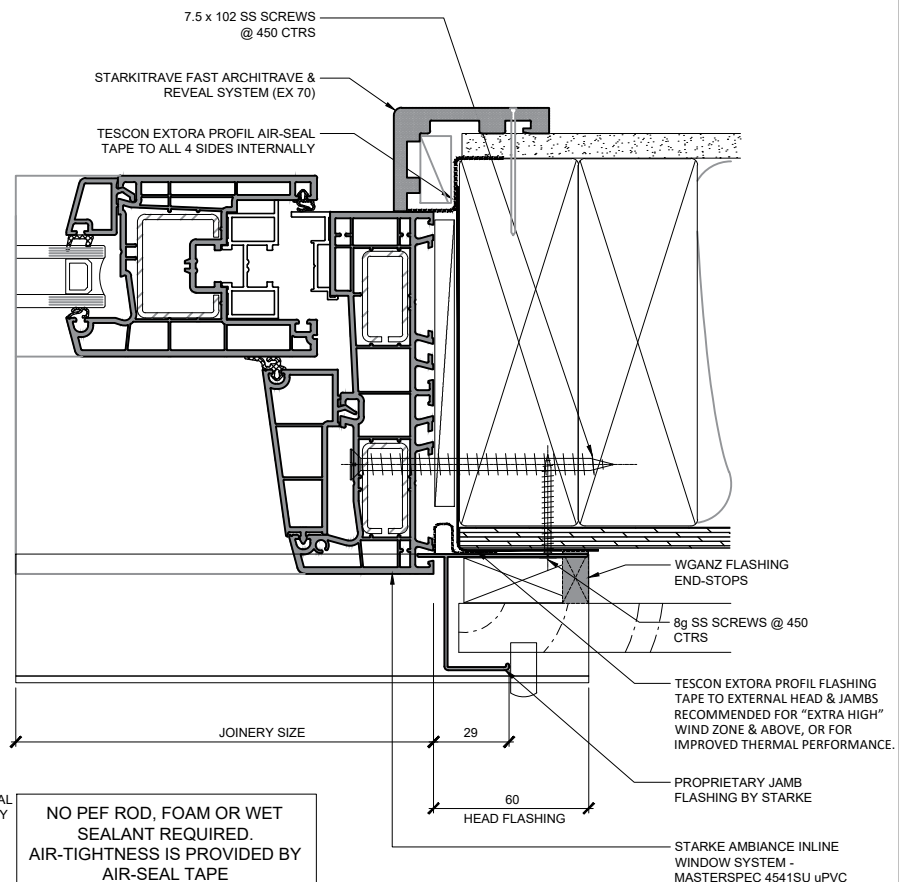
Inline Window Systems

## STARKE

DISCLAIMER: THIS INFORMATION IS FOR GUIDANCE ONLY. STARKE GROUP LIMITED (TRADING AS STÄRKE) MAKES NO WARRANTY OR REPRESENTATION OF ANY KIND, EXPRESS OR IMPLIED, REGARDING THE COMPLETENESS, ACCURACY, RELIABILITY OR SUITABILITY OF THE PRODUCT SHOWN HEREIN. RELIANCE ON THIS INFORMATION IS AT THE CUSTOMER'S SOLE RISK. IT IS RECOMMENDED THAT THE CUSTOMER SEEKS PROFESSIONAL ADVICE ON THE SUITABILITY OF THE PRODUCT FOR SPECIFIC APPLICATIONS. FOR TECHNICAL INFORMATION ON THE PRODUCT, PLEASE CONTACT STÄRKE.



**\*IMPORTANT\***  
IT IS CRITICAL THAT THE JOINERY SILL IS PACKED PERFECTLY LEVEL TO ENSURE THE CORRECT OPERATION OF ANY HIGH PERFORMANCE DOOR.



NO PEF ROD, FOAM OR WET SEALANT REQUIRED.  
AIR-TIGHTNESS IS PROVIDED BY AIR-SEAL TAPE

140mm Framing / RAB / 19mm Cladding on cavity

Smartslide

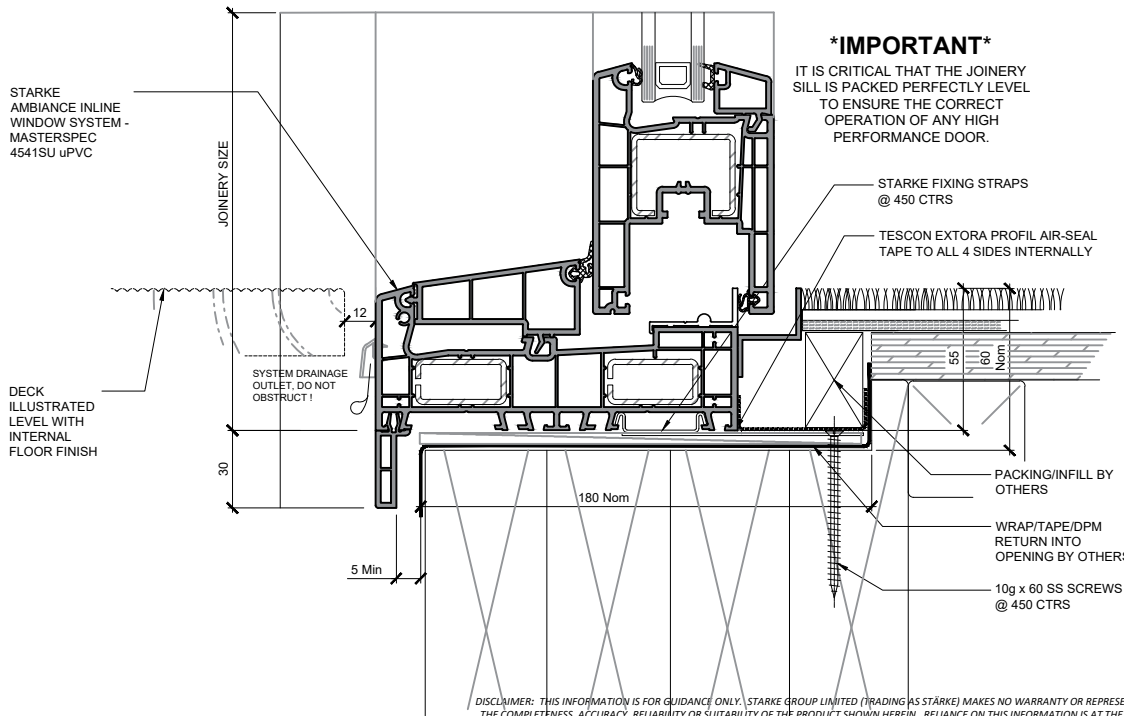
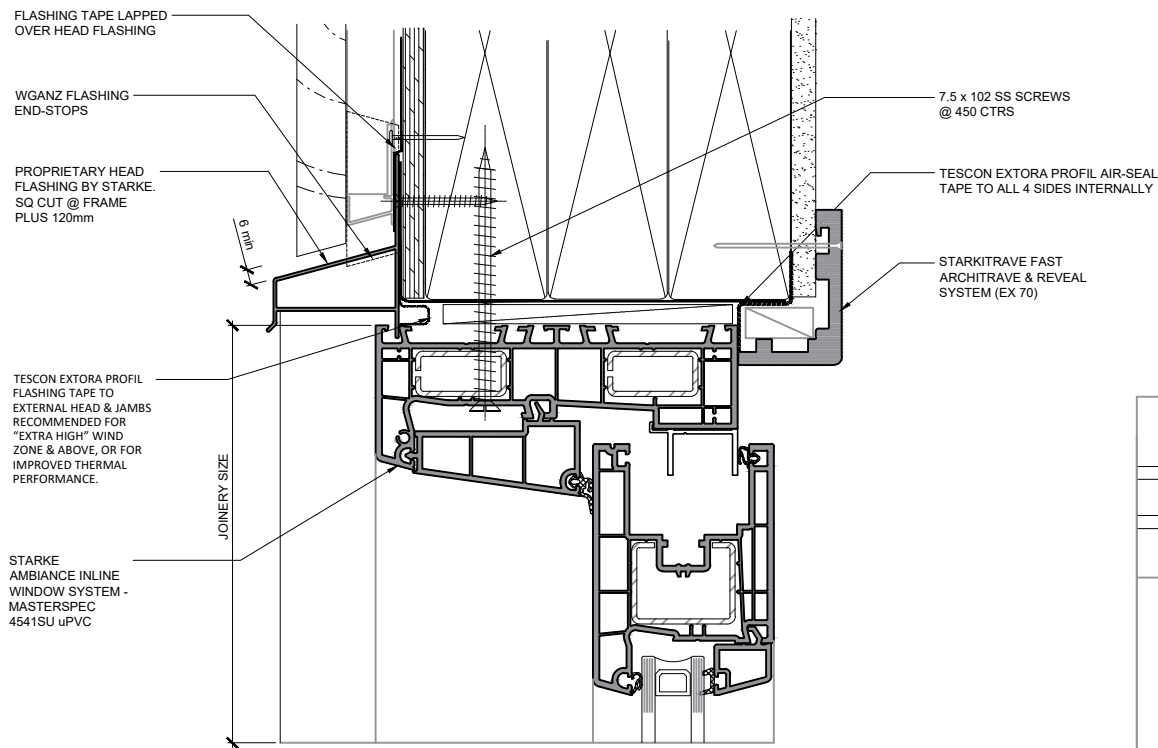
Concrete ground floor, Fully-rebated

# AMBIANCE

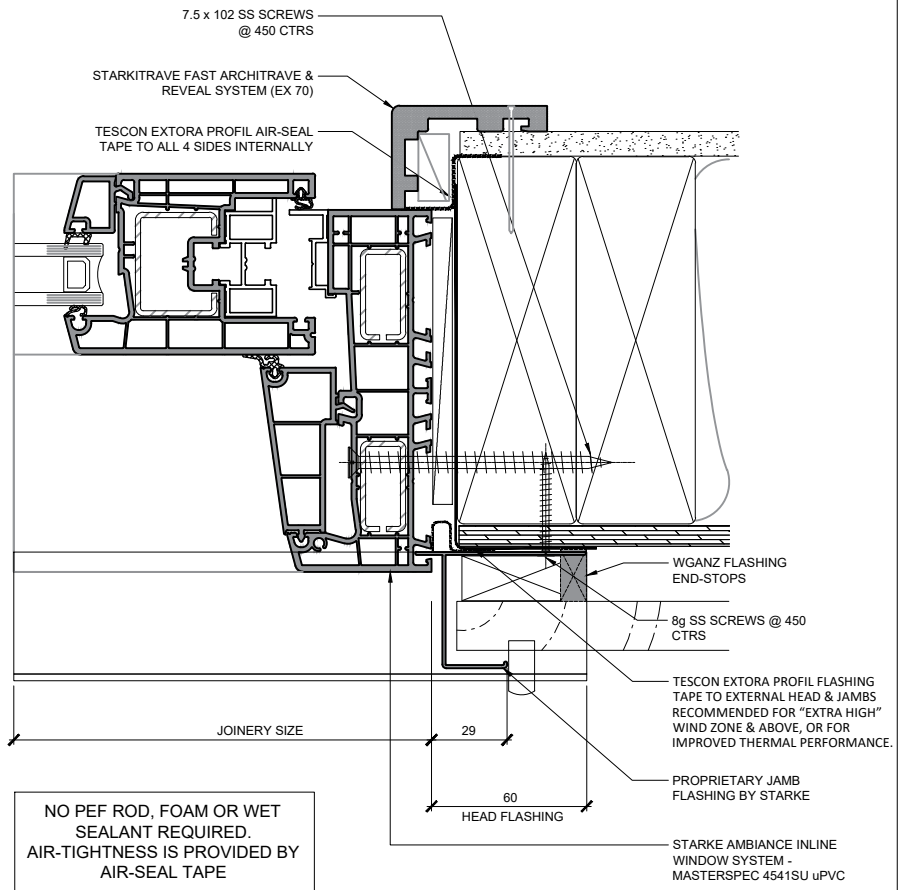
Inline Window Systems

# STÄRKE

DISCLAIMER: THIS INFORMATION IS FOR GUIDANCE ONLY. STARKE GROUP LIMITED (TRADING AS STÄRKE) MAKES NO WARRANTY OR REPRESENTATION OF ANY KIND, EXPRESS OR IMPLIED, REGARDING THE COMPLETENESS, ACCURACY, RELIABILITY OR SUITABILITY OF THE PRODUCT SHOWN HEREIN. RELIANCE ON THIS INFORMATION IS AT THE CUSTOMER'S SOLE RISK. IT IS RECOMMENDED THAT THE CUSTOMER SEEKS PROFESSIONAL ADVICE ON THE SUITABILITY OF THE PRODUCT FOR SPECIFIC APPLICATIONS. FOR TECHNICAL INFORMATION ON THE PRODUCT, PLEASE CONTACT STÄRKE.



**\*IMPORTANT\***  
IT IS CRITICAL THAT THE JOINERY SILL IS PACKED PERFECTLY LEVEL TO ENSURE THE CORRECT OPERATION OF ANY HIGH PERFORMANCE DOOR.



NO PEF ROD, FOAM OR WET SEALANT REQUIRED.  
AIR-TIGHTNESS IS PROVIDED BY AIR-SEAL TAPE

140mm Framing / RAB / 19mm Cladding on cavity
Smartslide
Timber ground floor, Fully-rebated

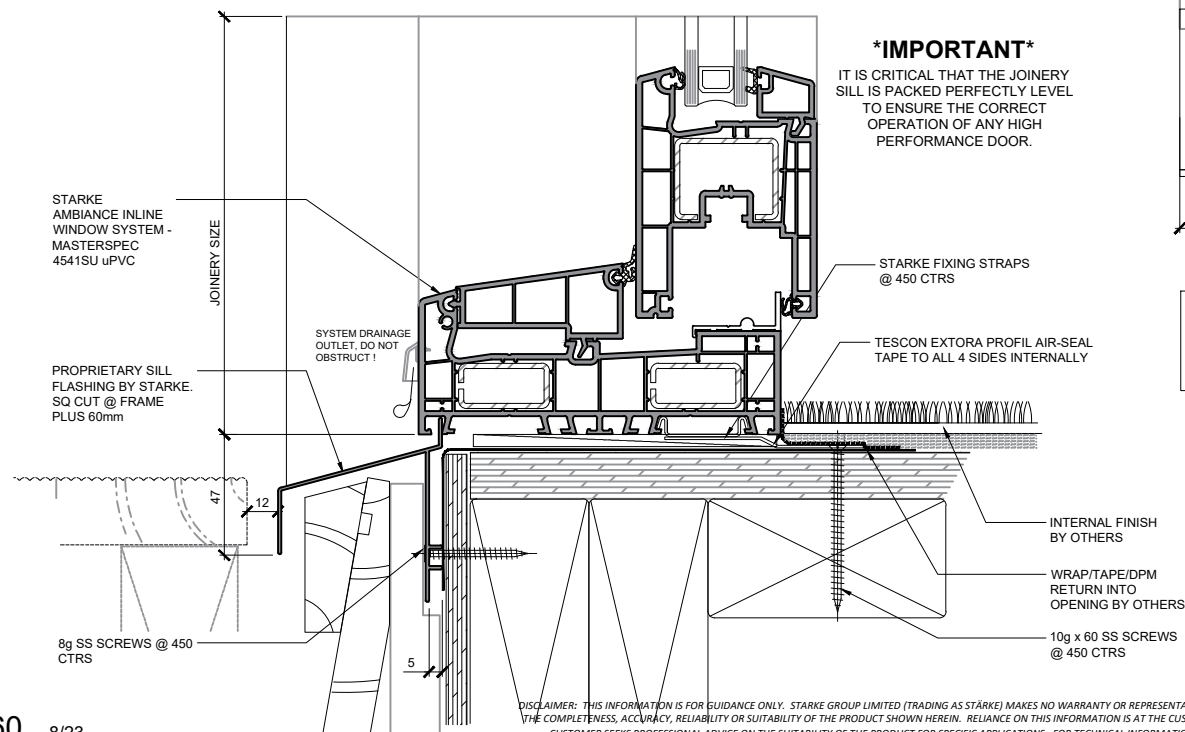
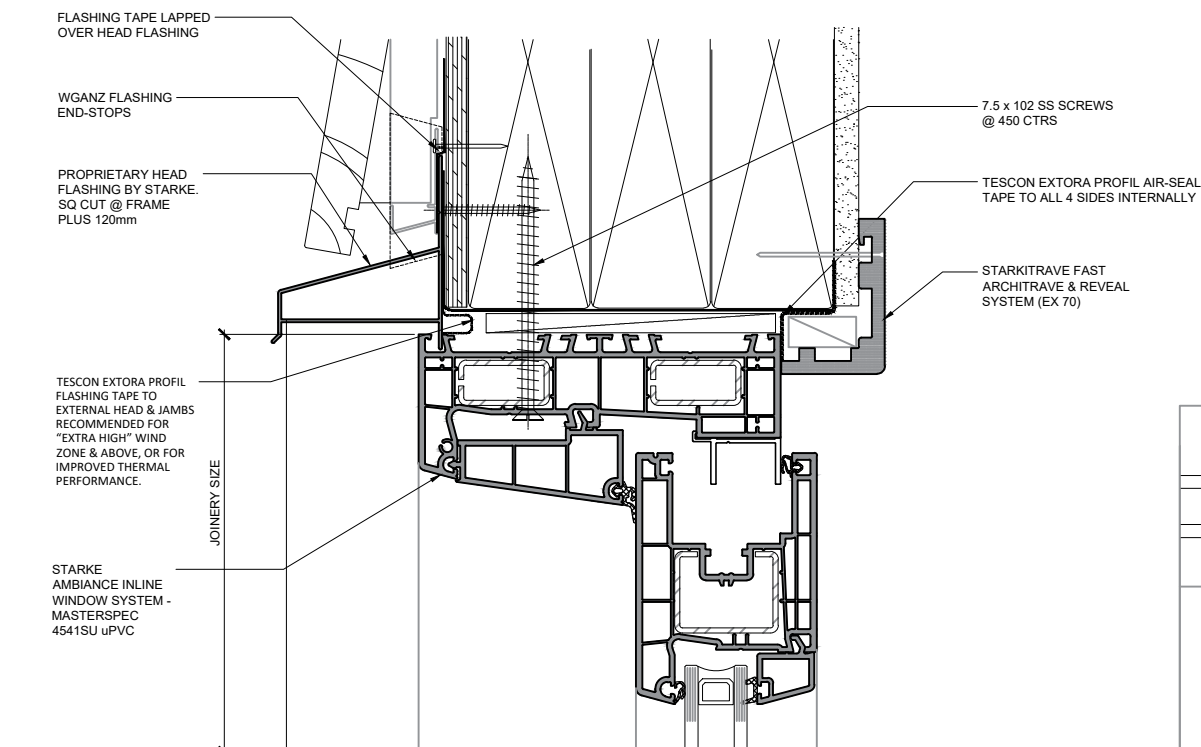
**AMBIANCE**  
Inline Window Systems  
**STÄRKE**

DISCLAIMER: THIS INFORMATION IS FOR GUIDANCE ONLY. STARKE GROUP LIMITED (TRADING AS STÄRKE) MAKES NO WARRANTY OR REPRESENTATION OF ANY KIND, EXPRESS OR IMPLIED, REGARDING THE COMPLETENESS, ACCURACY, RELIABILITY OR SUITABILITY OF THE PRODUCT SHOWN HEREIN. RELIANCE ON THIS INFORMATION IS AT THE CUSTOMER'S SOLE RISK. IT IS RECOMMENDED THAT THE CUSTOMER SEEKS PROFESSIONAL ADVICE ON THE SUITABILITY OF THE PRODUCT FOR SPECIFIC APPLICATIONS. FOR TECHNICAL INFORMATION ON THE PRODUCT, PLEASE CONTACT STÄRKE.

140mm Framing / RAB / Bevel-back on cavity

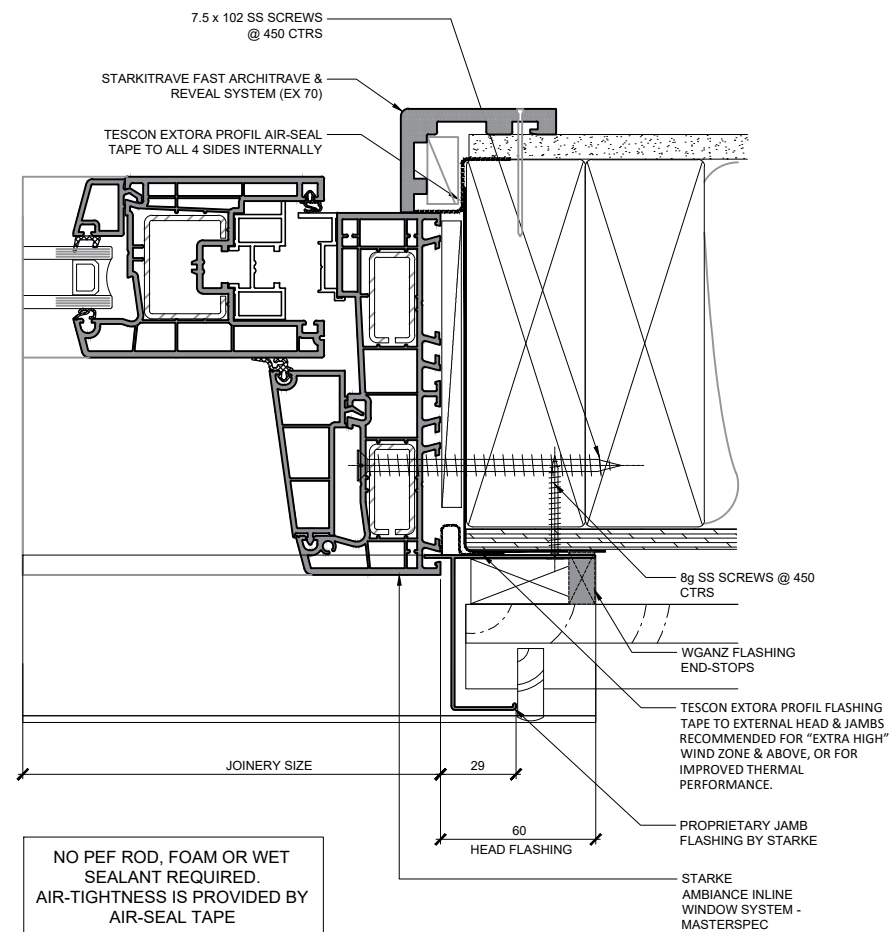
Smartslide

Timber mid-floor, Non-rebated



### \*IMPORTANT\*

IT IS CRITICAL THAT THE JOINERY SILL IS PACKED PERFECTLY LEVEL TO ENSURE THE CORRECT OPERATION OF ANY HIGH PERFORMANCE DOOR.



# AMBIANCE

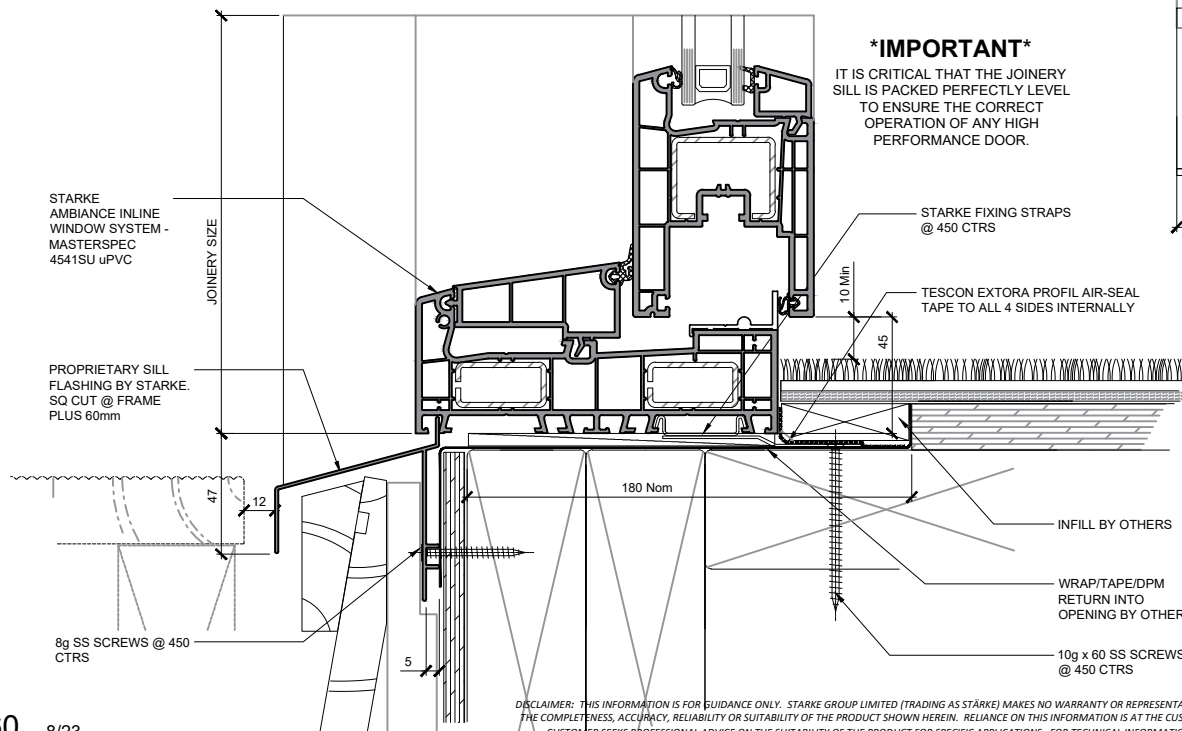
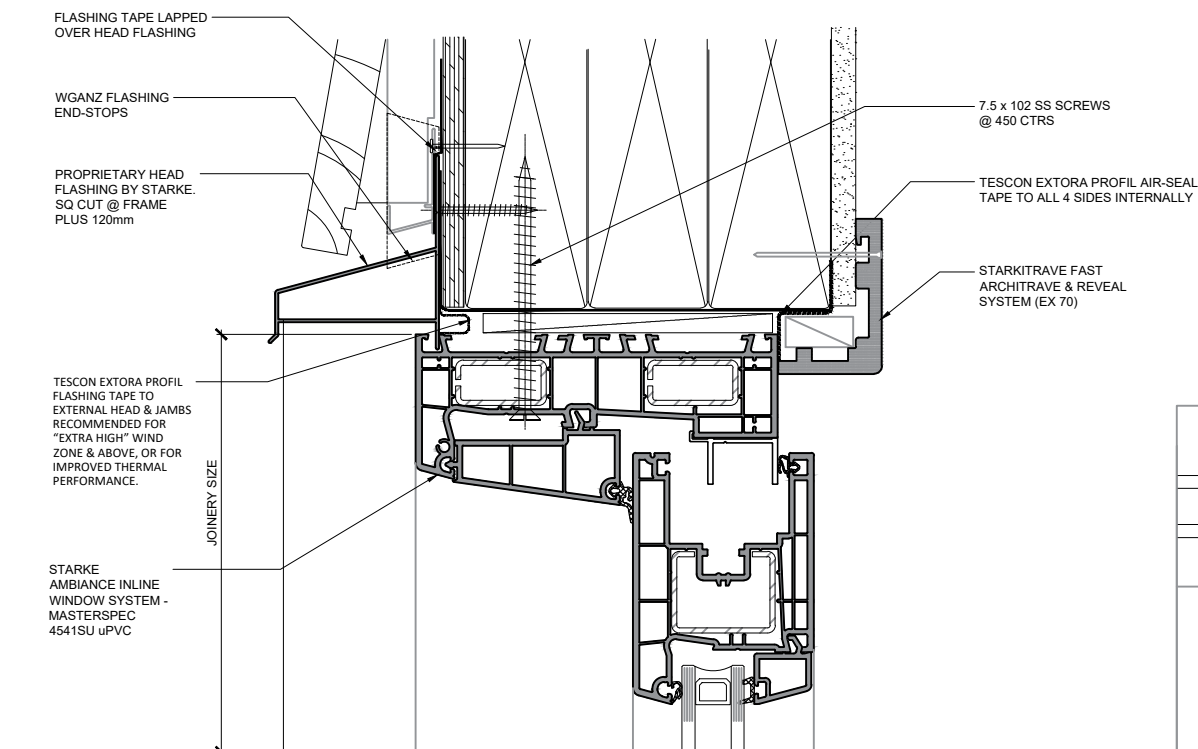
Inline Window Systems

# STÄRKE

140mm Framing / RAB / Bevel-back on cavity

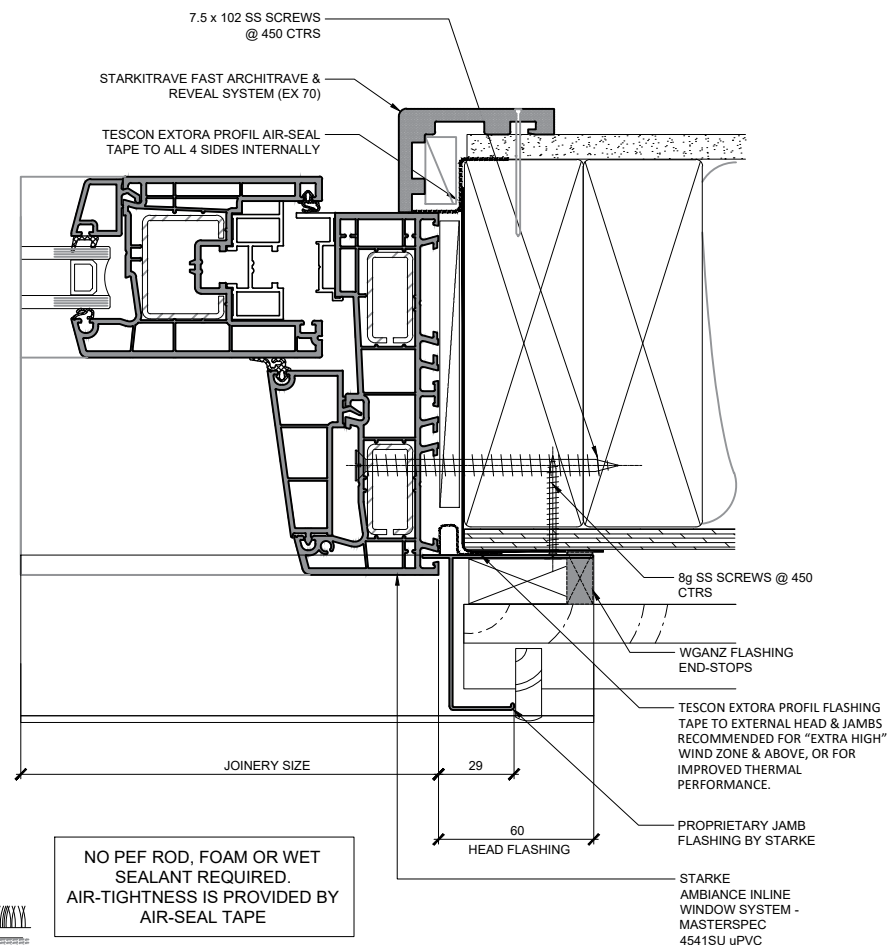
Smartslide

Timber mid-floor, Semi-rebated



**\*IMPORTANT\***

IT IS CRITICAL THAT THE JOINERY SILL IS PACKED PERFECTLY LEVEL TO ENSURE THE CORRECT OPERATION OF ANY HIGH PERFORMANCE DOOR.



NO PEF ROD, FOAM OR WET SEALANT REQUIRED. AIR-TIGHTNESS IS PROVIDED BY AIR-SEAL TAPE

**AMBIANCE**

Inline Window Systems

**STÄRKE**

DISCLAIMER: THIS INFORMATION IS FOR GUIDANCE ONLY. STARKE GROUP LIMITED (TRADING AS STÄRKE) MAKES NO WARRANTY OR REPRESENTATION OF ANY KIND, EXPRESS OR IMPLIED, REGARDING THE COMPLETENESS, ACCURACY, RELIABILITY OR SUITABILITY OF THE PRODUCT SHOWN HEREIN. RELIANCE ON THIS INFORMATION IS AT THE CUSTOMER'S SOLE RISK. IT IS RECOMMENDED THAT THE CUSTOMER SEEKS PROFESSIONAL ADVICE ON THE SUITABILITY OF THE PRODUCT FOR SPECIFIC APPLICATIONS. FOR TECHNICAL INFORMATION ON THE PRODUCT, PLEASE CONTACT STÄRKE.



140mm Framing / RAB / Bevel-back on cavity

Smartslide

Concrete mid floor, Non-rebated

FLASHING TAPE LAPPED  
OVER HEAD FLASHING

WGANZ FLASHING  
END-STOPS

PROPRIETARY HEAD  
FLASHING BY STARKE.  
SQ CUT @ FRAME  
PLUS 120mm

TESCON EXTORA PROFIL  
FLASHING TAPE TO  
EXTERNAL HEAD & JAMBS  
RECOMMENDED FOR  
"EXTRA HIGH" WIND  
ZONE & ABOVE, OR FOR  
IMPROVED THERMAL  
PERFORMANCE.

STARKE  
AMBIANCE INLINE  
WINDOW SYSTEM -  
MASTERSPEC  
4541SU uPVC

JOINERY SIZE

7.5 x 102 SS SCREWS  
@ 450 CTRS

TESCON EXTORA PROFIL AIR-SEAL  
TAPE TO ALL 4 SIDES INTERNALLY

STARKITRAVE FAST  
ARCHITRAVE & REVEAL  
SYSTEM (EX 70)

7.5 x 102 SS SCREWS  
@ 450 CTRS

STARKITRAVE FAST ARCHITRAVE &  
REVEAL SYSTEM (EX 70)

TESCON EXTORA PROFIL AIR-SEAL  
TAPE TO ALL 4 SIDES INTERNALLY

8g SS SCREWS @ 450  
CTRS

WGANZ FLASHING  
END-STOPS

TESCON EXTORA PROFIL FLASHING  
TAPE TO EXTERNAL HEAD & JAMBS  
RECOMMENDED FOR "EXTRA HIGH"  
WIND ZONE & ABOVE, OR FOR  
IMPROVED THERMAL  
PERFORMANCE.

PROPRIETARY JAMB  
FLASHING BY STARKE

STARKE  
AMBIANCE INLINE  
WINDOW SYSTEM -  
MASTERSPEC  
4541SU uPVC

JOINERY SIZE

29

60

HEAD FLASHING

NO PEF ROD, FOAM OR WET  
SEALANT REQUIRED.  
AIR-TIGHTNESS IS PROVIDED BY  
AIR-SEAL TAPE

### \*IMPORTANT\*

IT IS CRITICAL THAT THE JOINERY  
SILL IS PACKED PERFECTLY LEVEL  
TO ENSURE THE CORRECT  
OPERATION OF ANY HIGH  
PERFORMANCE DOOR.

STARKE FIXING STRAPS  
@ 450 CTRS

TESCON EXTORA PROFIL AIR-SEAL  
TAPE TO ALL 4 SIDES INTERNALLY

LINER / INTERNAL  
FINISH BY OTHERS

WRAP/TAPE/DPM  
RETURN INTO  
OPENING BY OTHERS

10g x 60 SS SCREWS  
@ 450 CTRS

STARKE  
AMBIANCE INLINE  
WINDOW SYSTEM -  
MASTERSPEC  
4541SU uPVC

JOINERY SIZE

47

PROPRIETARY SILL  
FLASHING BY STARKE.  
SQ CUT @ FRAME  
PLUS 60mm

SYSTEM DRAINAGE  
OUTLET, DO NOT  
OBSTRUCT !

8g SS SCREWS @ 450  
CTRS

12

5

DISCLAIMER: THIS INFORMATION IS FOR GUIDANCE ONLY. STARKE GROUP LIMITED (TRADING AS STÄRKE) MAKES NO WARRANTY OR REPRESENTATION OF ANY KIND, EXPRESS OR IMPLIED, REGARDING THE COMPLETENESS, ACCURACY, RELIABILITY OR SUITABILITY OF THE PRODUCT SHOWN HEREIN. RELIANCE ON THIS INFORMATION IS AT THE CUSTOMER'S SOLE RISK. IT IS RECOMMENDED THAT THE CUSTOMER SEEKS PROFESSIONAL ADVICE ON THE SUITABILITY OF THE PRODUCT FOR SPECIFIC APPLICATIONS. FOR TECHNICAL INFORMATION ON THE PRODUCT, PLEASE CONTACT STÄRKE.

# AMBIANCE

Inline Window Systems

# STÄRKE

FLASHING TAPE LAPPED  
OVER HEAD FLASHING

WGANZ FLASHING  
END-STOPS

PROPRIETARY HEAD  
FLASHING BY STARKE.  
SQ CUT @ FRAME  
PLUS 120mm

TESCON EXTORA PROFIL  
FLASHING TAPE TO  
EXTERNAL HEAD & JAMBS  
RECOMMENDED FOR  
"EXTRA HIGH" WIND  
ZONE & ABOVE, OR FOR  
IMPROVED THERMAL  
PERFORMANCE.

STARKE  
AMBIANCE INLINE  
WINDOW SYSTEM -  
MASTERSPEC  
4541SU uPVC

JOINERY SIZE

7.5 x 102 SS SCREWS  
@ 450 CTRS

TESCON EXTORA PROFIL AIR-SEAL  
TAPE TO ALL 4 SIDES INTERNALLY

STARKITRAVE FAST  
ARCHITRAVE & REVEAL  
SYSTEM (EX 70)

7.5 x 102 SS SCREWS  
@ 450 CTRS

STARKITRAVE FAST ARCHITRAVE &  
REVEAL SYSTEM (EX 70)

TESCON EXTORA PROFIL AIR-SEAL  
TAPE TO ALL 4 SIDES INTERNALLY

Smartslide

Concrete ground floor, Non-rebated

140mm Framing / RAB / Bevel-back on cavity

STARKE  
AMBIANCE INLINE  
WINDOW SYSTEM -  
MASTERSPEC  
4541SU uPVC

JOINERY SIZE

### \*IMPORTANT\*

IT IS CRITICAL THAT THE JOINERY  
SILL IS PACKED PERFECTLY LEVEL  
TO ENSURE THE CORRECT  
OPERATION OF ANY HIGH  
PERFORMANCE DOOR.

STARKE FIXING STRAPS  
@ 450 CTRS

TESCON EXTORA PROFIL AIR-SEAL  
TAPE TO ALL 4 SIDES INTERNALLY

SYSTEM DRAINAGE  
OUTLET, DO NOT  
OBSTRUCT !

30

5 Min

LINER / INTERNAL  
FINISH BY OTHERS

WRAP/TAPE/DPM  
RETURN INTO  
OPENING BY OTHERS

10g x 60 SS SCREWS  
@ 450 CTRS

NO PEF ROD, FOAM OR WET  
SEALANT REQUIRED.  
AIR-TIGHTNESS IS PROVIDED BY  
AIR-SEAL TAPE

8g SS SCREWS @ 450  
CTRS

WGANZ FLASHING  
END-STOPS

TESCON EXTORA PROFIL FLASHING  
TAPE TO EXTERNAL HEAD & JAMBS  
RECOMMENDED FOR "EXTRA HIGH"  
WIND ZONE & ABOVE, OR FOR  
IMPROVED THERMAL  
PERFORMANCE.

PROPRIETARY JAMB  
FLASHING BY STARKE

STARKE  
AMBIANCE INLINE  
WINDOW SYSTEM -  
MASTERSPEC  
4541SU uPVC

JOINERY SIZE

29

60  
HEAD FLASHING

# AMBIANCE

Inline Window Systems

# STARKE

DISCLAIMER: THIS INFORMATION IS FOR GUIDANCE ONLY. STARKE GROUP LIMITED (TRADING AS STÄRKE) MAKES NO WARRANTY OR REPRESENTATION OF ANY KIND, EXPRESS OR IMPLIED, REGARDING THE COMPLETENESS, ACCURACY, RELIABILITY OR SUITABILITY OF THE PRODUCT SHOWN HEREIN. RELIANCE ON THIS INFORMATION IS AT THE CUSTOMER'S SOLE RISK. IT IS RECOMMENDED THAT THE CUSTOMER SEEKS PROFESSIONAL ADVICE ON THE SUITABILITY OF THE PRODUCT FOR SPECIFIC APPLICATIONS. FOR TECHNICAL INFORMATION ON THE PRODUCT, PLEASE CONTACT STÄRKE.



FLASHING TAPE LAPPED  
OVER HEAD FLASHING

WGANZ FLASHING  
END-STOPS

PROPRIETARY HEAD  
FLASHING BY STARKE.  
SQ CUT @ FRAME  
PLUS 120mm

TESCON EXTORA PROFIL  
FLASHING TAPE TO  
EXTERNAL HEAD & JAMBS  
RECOMMENDED FOR  
"EXTRA HIGH" WIND  
ZONE & ABOVE, OR FOR  
IMPROVED THERMAL  
PERFORMANCE.

STARKE  
AMBIANCE INLINE  
WINDOW SYSTEM -  
MASTERSPEC  
4541SU uPVC

STARKE  
AMBIANCE INLINE  
WINDOW SYSTEM -  
MASTERSPEC  
4541SU uPVC

DECK  
ILLUSTRATED  
LEVEL WITH  
INTERNAL  
FLOOR FINISH

JOINERY SIZE

JOINERY SIZE

30

5 Min

180 Nom

7.5 x 102 SS SCREWS  
@ 450 CTRS

TESCON EXTORA PROFIL AIR-SEAL  
TAPE TO ALL 4 SIDES INTERNALLY

STARKITRAVE FAST  
ARCHITRAVE & REVEAL  
SYSTEM (EX 70)

### \*IMPORTANT\*

IT IS CRITICAL THAT THE JOINERY  
SILL IS PACKED PERFECTLY LEVEL  
TO ENSURE THE CORRECT  
OPERATION OF ANY HIGH  
PERFORMANCE DOOR.

STARKE FIXING STRAPS  
@ 450 CTRS

TESCON EXTORA PROFIL AIR-SEAL  
TAPE TO ALL 4 SIDES INTERNALLY

55

60 Nom

PACKING/INFILL BY  
OTHERS

WRAP/TAPE/DPM  
RETURN INTO  
OPENING BY OTHERS

10g x 60 SS SCREWS  
@ 450 CTRS

140mm Framing / RAB / Bevel-back on cavity

Smartslide

Concrete ground floor, Fully-rebated

7.5 x 102 SS SCREWS  
@ 450 CTRS

STARKITRAVE FAST ARCHITRAVE &  
REVEAL SYSTEM (EX 70)

TESCON EXTORA PROFIL AIR-SEAL  
TAPE TO ALL 4 SIDES INTERNALLY

JOINERY SIZE

29

60

HEAD FLASHING

8g SS SCREWS @ 450  
CTRS

WGANZ FLASHING  
END-STOPS

TESCON EXTORA PROFIL FLASHING  
TAPE TO EXTERNAL HEAD & JAMBS  
RECOMMENDED FOR "EXTRA HIGH"  
WIND ZONE & ABOVE, OR FOR  
IMPROVED THERMAL  
PERFORMANCE.

PROPRIETARY JAMB  
FLASHING BY STARKE

STARKE  
AMBIANCE INLINE  
WINDOW SYSTEM -  
MASTERSPEC  
4541SU uPVC

NO PEF ROD, FOAM OR WET  
SEALANT REQUIRED.  
AIR-TIGHTNESS IS PROVIDED BY  
AIR-SEAL TAPE

# AMBIANCE

Inline Window Systems

# STARKE

DISCLAIMER: THIS INFORMATION IS FOR GUIDANCE ONLY. STARKE GROUP LIMITED (TRADING AS STÄRKE) MAKES NO WARRANTY OR REPRESENTATION OF ANY KIND, EXPRESS OR IMPLIED, REGARDING THE COMPLETENESS, ACCURACY, RELIABILITY OR SUITABILITY OF THE PRODUCT SHOWN HEREIN. RELIANCE ON THIS INFORMATION IS AT THE CUSTOMER'S SOLE RISK. IT IS RECOMMENDED THAT THE CUSTOMER SEEKS PROFESSIONAL ADVICE ON THE SUITABILITY OF THE PRODUCT FOR SPECIFIC APPLICATIONS. FOR TECHNICAL INFORMATION ON THE PRODUCT, PLEASE CONTACT STÄRKE.

FLASHING TAPE LAPPED  
OVER HEAD FLASHING

WGANZ FLASHING  
END-STOPS

PROPRIETARY HEAD  
FLASHING BY STARKE.  
SQ CUT @ FRAME  
PLUS 120mm

TESCON EXTORA PROFIL  
FLASHING TAPE TO  
EXTERNAL HEAD & JAMBS  
RECOMMENDED FOR  
"EXTRA HIGH" WIND  
ZONE & ABOVE, OR FOR  
IMPROVED THERMAL  
PERFORMANCE.

STARKE  
AMBIANCE INLINE  
WINDOW SYSTEM -  
MASTERSPEC  
4541SU uPVC

STARKE  
AMBIANCE INLINE  
WINDOW SYSTEM -  
MASTERSPEC  
4541SU uPVC

DECK  
ILLUSTRATED  
LEVEL WITH  
INTERNAL  
FLOOR FINISH

JOINERY SIZE

JOINERY SIZE

30

5 Min

180 Nom

### \*IMPORTANT\*

IT IS CRITICAL THAT THE JOINERY  
SILL IS PACKED PERFECTLY LEVEL  
TO ENSURE THE CORRECT  
OPERATION OF ANY HIGH  
PERFORMANCE DOOR.

STARKE FIXING STRAPS  
@ 450 CTRS

TESCON EXTORA PROFIL AIR-SEAL  
TAPE TO ALL 4 SIDES INTERNALLY

55  
60  
Nom

PACKING/INFILL BY  
OTHERS

WRAP/TAPE/DPM  
RETURN INTO  
OPENING BY OTHERS

10g x 60 SS SCREWS  
@ 450 CTRS

7.5 x 102 SS SCREWS  
@ 450 CTRS

TESCON EXTORA PROFIL AIR-SEAL  
TAPE TO ALL 4 SIDES INTERNALLY

STARKITRAVE FAST  
ARCHITRAVE & REVEAL  
SYSTEM (EX 70)

140mm Framing / RAB / Bevel-back on cavity

Smartslide

Timber ground floor, Fully-rebated

7.5 x 102 SS SCREWS  
@ 450 CTRS

STARKITRAVE FAST ARCHITRAVE &  
REVEAL SYSTEM (EX 70)

TESCON EXTORA PROFIL AIR-SEAL  
TAPE TO ALL 4 SIDES INTERNALLY

JOINERY SIZE

29

60

HEAD FLASHING

8g SS SCREWS @ 450  
CTRS

WGANZ FLASHING  
END-STOPS

TESCON EXTORA PROFIL FLASHING  
TAPE TO EXTERNAL HEAD & JAMBS  
RECOMMENDED FOR "EXTRA HIGH"  
WIND ZONE & ABOVE, OR FOR  
IMPROVED THERMAL  
PERFORMANCE.

PROPRIETARY JAMB  
FLASHING BY STARKE

STARKE  
AMBIANCE INLINE  
WINDOW SYSTEM -  
MASTERSPEC  
4541SU uPVC

NO PEF ROD, FOAM OR WET  
SEALANT REQUIRED.  
AIR-TIGHTNESS IS PROVIDED BY  
AIR-SEAL TAPE

# AMBIANCE

Inline Window Systems

# STARKE

140mm Framing / RAB / 70mm Brick Veneer

Smartslide

Timber floor, Non-rebated

FLASHING TAPE LAPPED  
OVER HEAD & SILL  
FLASHING

PROPRIETARY HEAD &  
SILL FLASHING BY  
STARKE  
SQ CUT @ FRAME  
PLUS 60mm

TESCON EXTORA PROFIL  
FLASHING TAPE TO  
EXTERNAL HEAD & JAMBS  
RECOMMENDED FOR  
"EXTRA HIGH" WIND ZONE  
& ABOVE, OR FOR  
IMPROVED THERMAL  
PERFORMANCE.

STARKE  
AMBIANCE INLINE  
WINDOW SYSTEM -  
MASTERSPEC  
4541SU uPVC

7.5 x 102 SS SCREWS  
@ 450 CTRS

TESCON EXTORA PROFIL AIR-SEAL  
TAPE TO ALL 4 SIDES INTERNALLY

STARKITRAVE FAST  
ARCHITRAVE & REVEAL  
SYSTEM (EX 70)

7.5 x 102 SS SCREWS  
@ 450 CTRS

STARKITRAVE FAST ARCHITRAVE &  
REVEAL SYSTEM (EX 70)

TESCON EXTORA PROFIL AIR-SEAL  
TAPE TO ALL 4 SIDES INTERNALLY

JOINERY SIZE

JOINERY SIZE

STARKE  
AMBIANCE INLINE  
WINDOW SYSTEM -  
MASTERSPEC  
4541SU uPVC

PROPRIETARY SILL  
FLASHING BY STARKE.  
SQ CUT @ FRAME  
PLUS 60mm

8g SS SCREWS @ 450  
CTRS

### \*IMPORTANT\*

IT IS CRITICAL THAT THE JOINERY  
SILL IS PACKED PERFECTLY LEVEL  
TO ENSURE THE CORRECT  
OPERATION OF ANY HIGH  
PERFORMANCE DOOR.

STARKE FIXING STRAPS  
@ 450 CTRS

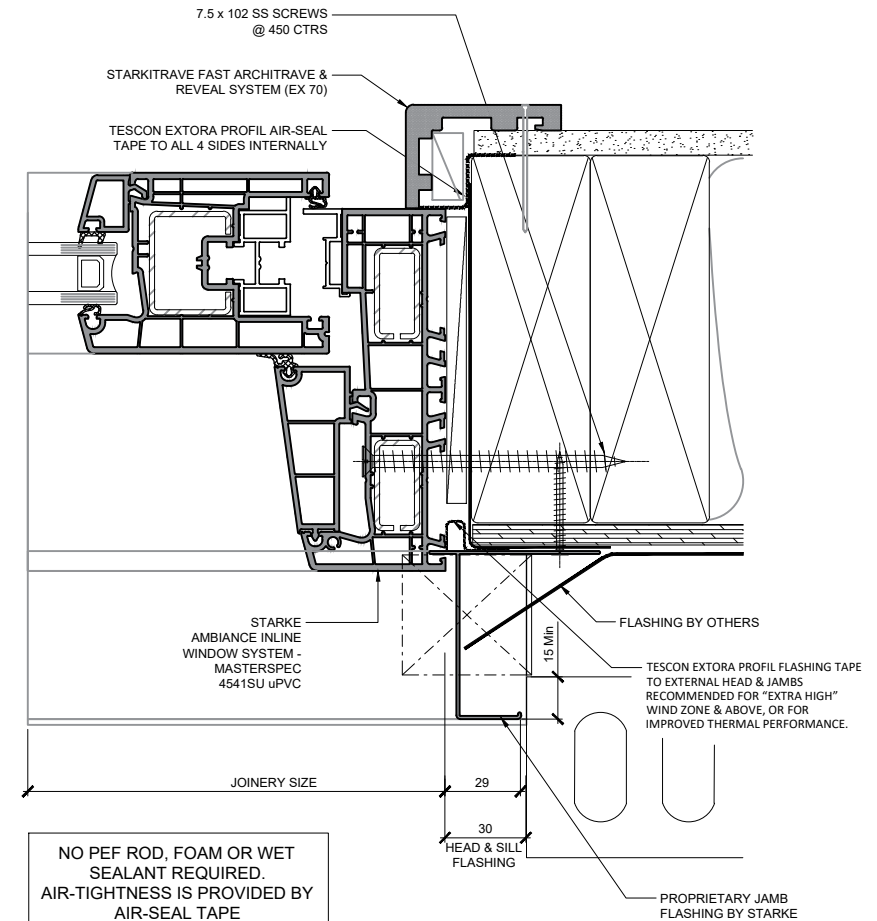
TESCON EXTORA PROFIL AIR-SEAL  
TAPE TO ALL 4 SIDES INTERNALLY

INTERNAL FINISH  
BY OTHERS

WRAP/TAPE/DPM  
RETURN INTO  
OPENING BY OTHERS

10g x 60 SS SCREWS  
@ 450 CTRS

DISCLAIMER: THIS INFORMATION IS FOR GUIDANCE ONLY. STARKE GROUP LIMITED (TRADING AS STÄRKE) MAKES NO WARRANTY OR REPRESENTATION OF ANY KIND, EXPRESS OR IMPLIED, REGARDING THE COMPLETENESS, ACCURACY, RELIABILITY OR SUITABILITY OF THE PRODUCT SHOWN HEREIN. RELIANCE ON THIS INFORMATION IS AT THE CUSTOMER'S SOLE RISK. IT IS RECOMMENDED THAT THE CUSTOMER SEEKS PROFESSIONAL ADVICE ON THE SUITABILITY OF THE PRODUCT FOR SPECIFIC APPLICATIONS. FOR TECHNICAL INFORMATION ON THE PRODUCT, PLEASE CONTACT STÄRKE.



# AMBIANCE

Inline Window Systems

**STÄRKE**

140mm Framing / RAB / 70mm Brick Veneer

Smartslide

Timber floor, Semi-rebated

FLASHING TAPE LAPPED  
OVER HEAD & SILL  
FLASHING

PROPRIETARY HEAD &  
SILL FLASHING BY  
STARKE  
SQ CUT @ FRAME  
PLUS 60mm

TESCON EXTORA PROFIL  
FLASHING TAPE TO  
EXTERNAL HEAD & JAMBS  
RECOMMENDED FOR  
"EXTRA HIGH" WIND ZONE  
& ABOVE, OR FOR  
IMPROVED THERMAL  
PERFORMANCE.

STARKE  
AMBIANCE INLINE  
WINDOW SYSTEM -  
MASTERSPEC  
4541SU uPVC

JOINERY SIZE

7.5 x 102 SS SCREWS  
@ 450 CTRS

TESCON EXTORA PROFIL AIR-SEAL  
TAPE TO ALL 4 SIDES INTERNALLY

STARKITRAVE FAST  
ARCHITRAVE & REVEAL  
SYSTEM (EX 70)

7.5 x 102 SS SCREWS  
@ 450 CTRS

STARKITRAVE FAST ARCHITRAVE &  
REVEAL SYSTEM (EX 70)

TESCON EXTORA PROFIL AIR-SEAL  
TAPE TO ALL 4 SIDES INTERNALLY

STARKE  
AMBIANCE INLINE  
WINDOW SYSTEM -  
MASTERSPEC  
4541SU uPVC

FLASHING BY OTHERS

TESCON EXTORA PROFIL FLASHING TAPE  
TO EXTERNAL HEAD & JAMBS  
RECOMMENDED FOR "EXTRA HIGH"  
WIND ZONE & ABOVE, OR FOR  
IMPROVED THERMAL PERFORMANCE.

JOINERY SIZE

29

30

HEAD & SILL  
FLASHING

PROPRIETARY JAMB  
FLASHING BY STARKE

NO PEF ROD, FOAM OR WET  
SEALANT REQUIRED.  
AIR-TIGHTNESS IS PROVIDED BY  
AIR-SEAL TAPE

### \*IMPORTANT\*

IT IS CRITICAL THAT THE JOINERY  
SILL IS PACKED PERFECTLY LEVEL  
TO ENSURE THE CORRECT  
OPERATION OF ANY HIGH  
PERFORMANCE DOOR.

STARKE FIXING STRAPS  
@ 450 CTRS

TESCON EXTORA PROFIL AIR-SEAL  
TAPE TO ALL 4 SIDES INTERNALLY

10 Min

45

STARKE  
AMBIANCE INLINE  
WINDOW SYSTEM -  
MASTERSPEC  
4541SU uPVC

PROPRIETARY SILL  
FLASHING BY STARKE.  
SQ CUT @ FRAME  
PLUS 60mm

JOINERY SIZE

48

5 mm

180 Nom

INFILL BY OTHERS

WRAP/TAPE/DPM  
RETURN INTO  
OPENING BY OTHERS

10g x 60 SS SCREWS  
@ 450 CTRS

8g SS SCREWS @ 450  
CTRS

DISCLAIMER: THIS INFORMATION IS FOR GUIDANCE ONLY. STARKE GROUP LIMITED (TRADING AS STÄRKE) MAKES NO WARRANTY OR REPRESENTATION OF ANY KIND, EXPRESS OR IMPLIED, REGARDING THE COMPLETENESS, ACCURACY, RELIABILITY OR SUITABILITY OF THE PRODUCT SHOWN HEREIN. RELIANCE ON THIS INFORMATION IS AT THE CUSTOMER'S SOLE RISK. IT IS RECOMMENDED THAT THE CUSTOMER SEEKS PROFESSIONAL ADVICE ON THE SUITABILITY OF THE PRODUCT FOR SPECIFIC APPLICATIONS. FOR TECHNICAL INFORMATION ON THE PRODUCT, PLEASE CONTACT STÄRKE.

# AMBIANCE

Inline Window Systems

# STÄRKE

140mm Framing / RAB / 70mm Brick Veneer

Smartslide

Concrete floor, Non-rebated

FLASHING TAPE LAPPED  
OVER HEAD & SILL  
FLASHING

PROPRIETARY HEAD &  
SILL FLASHING BY  
STARKE  
SQ CUT @ FRAME  
PLUS 60mm

TESCON EXTORA PROFIL  
FLASHING TAPE TO  
EXTERNAL HEAD & JAMBS  
RECOMMENDED FOR  
"EXTRA HIGH" WIND ZONE  
& ABOVE, OR FOR  
IMPROVED THERMAL  
PERFORMANCE.

STARKE  
AMBIANCE INLINE  
WINDOW SYSTEM -  
MASTERSPEC  
4541SU uPVC

JOINERY SIZE

7.5 x 102 SS SCREWS  
@ 450 CTRS

TESCON EXTORA PROFIL AIR-SEAL  
TAPE TO ALL 4 SIDES INTERNALLY

STARKITRAVE FAST  
ARCHITRAVE & REVEAL  
SYSTEM (EX 70)

7.5 x 102 SS SCREWS  
@ 450 CTRS

STARKITRAVE FAST ARCHITRAVE &  
REVEAL SYSTEM (EX 70)

TESCON EXTORA PROFIL AIR-SEAL  
TAPE TO ALL 4 SIDES INTERNALLY

STARKE  
AMBIANCE INLINE  
WINDOW SYSTEM -  
MASTERSPEC  
4541SU uPVC

JOINERY SIZE

SYSTEM DRAINAGE  
OUTLET, DO NOT  
OBSTRUCT !

### \*IMPORTANT\*

IT IS CRITICAL THAT THE JOINERY  
SILL IS PACKED PERFECTLY LEVEL  
TO ENSURE THE CORRECT  
OPERATION OF ANY HIGH  
PERFORMANCE DOOR.

STARKE FIXING STRAPS  
@ 450 CTRS

TESCON EXTORA PROFIL AIR-SEAL  
TAPE TO ALL 4 SIDES INTERNALLY

LINER / INTERNAL  
FINISH BY OTHERS

WRAP/TAPE/DPM  
RETURN INTO  
OPENING BY OTHERS

10g x 60 SS SCREWS  
@ 450 CTRS

NO PEF ROD, FOAM OR WET  
SEALANT REQUIRED.  
AIR-TIGHTNESS IS PROVIDED BY  
AIR-SEAL TAPE

FLASHING BY OTHERS

TESCON EXTORA PROFIL FLASHING TAPE  
TO EXTERNAL HEAD & JAMBS  
RECOMMENDED FOR "EXTRA HIGH"  
WIND ZONE & ABOVE, OR FOR  
IMPROVED THERMAL PERFORMANCE.

PROPRIETARY JAMB  
FLASHING BY STARKE

# AMBIANCE

Inline Window Systems

# STARKE



140mm Framing / RAB / 70mm Brick Veneer

Smartslide

Concrete ground floor, Fully-rebated

FLASHING TAPE LAPPED  
OVER HEAD & SILL  
FLASHING

PROPRIETARY HEAD &  
SILL FLASHING BY  
STARKE  
SQ CUT @ FRAME  
PLUS 60mm

TESCON EXTORA PROFIL  
FLASHING TAPE TO  
EXTERNAL HEAD & JAMBS  
RECOMMENDED FOR  
"EXTRA HIGH" WIND ZONE  
& ABOVE, OR FOR  
IMPROVED THERMAL  
PERFORMANCE.

STARKE  
AMBIANCE INLINE  
WINDOW SYSTEM -  
MASTERSPEC  
4541SU uPVC

7.5 x 102 SS SCREWS  
@ 450 CTRS

TESCON EXTORA PROFIL AIR-SEAL  
TAPE TO ALL 4 SIDES INTERNALLY

STARKITRAVE FAST  
ARCHITRAVE & REVEAL  
SYSTEM (EX 70)

7.5 x 102 SS SCREWS  
@ 450 CTRS

STARKITRAVE FAST ARCHITRAVE &  
REVEAL SYSTEM (EX 70)

TESCON EXTORA PROFIL AIR-SEAL  
TAPE TO ALL 4 SIDES INTERNALLY

### \*IMPORTANT\*

IT IS CRITICAL THAT THE JOINERY  
SILL IS PACKED PERFECTLY LEVEL  
TO ENSURE THE CORRECT  
OPERATION OF ANY HIGH  
PERFORMANCE DOOR.

STARKE FIXING STRAPS  
@ 450 CTRS

TESCON EXTORA PROFIL AIR-SEAL  
TAPE TO ALL 4 SIDES INTERNALLY

NO PEF ROD, FOAM OR WET  
SEALANT REQUIRED.  
AIR-TIGHTNESS IS PROVIDED BY  
AIR-SEAL TAPE

PACKING/INFILL BY  
OTHERS

WRAP/TAPE/DPM  
RETURN INTO  
OPENING BY OTHERS

10g x 60 SS SCREWS  
@ 450 CTRS

STARKE  
AMBIANCE INLINE  
WINDOW SYSTEM -  
MASTERSPEC  
4541SU uPVC

DECK  
ILLUSTRATED  
LEVEL WITH  
INTERNAL  
FLOOR FINISH

SYSTEM DRAINAGE  
OUTLET, DO NOT  
OBSTRUCT !

FLASHING BY OTHERS

TESCON EXTORA PROFIL FLASHING TAPE  
TO EXTERNAL HEAD & JAMBS  
RECOMMENDED FOR "EXTRA HIGH"  
WIND ZONE & ABOVE, OR FOR  
IMPROVED THERMAL PERFORMANCE.

PROPRIETARY JAMB  
FLASHING BY STARKE

# AMBIANCE

Inline Window Systems

# STARKE

DISCLAIMER: THIS INFORMATION IS FOR GUIDANCE ONLY. STARKE GROUP LIMITED (TRADING AS STÄRKE) MAKES NO WARRANTY OR REPRESENTATION OF ANY KIND, EXPRESS OR IMPLIED, REGARDING THE COMPLETENESS, ACCURACY, RELIABILITY OR SUITABILITY OF THE PRODUCT SHOWN HEREIN. RELIANCE ON THIS INFORMATION IS AT THE CUSTOMER'S SOLE RISK. IT IS RECOMMENDED THAT THE CUSTOMER SEEKS PROFESSIONAL ADVICE ON THE SUITABILITY OF THE PRODUCT FOR SPECIFIC APPLICATIONS. FOR TECHNICAL INFORMATION ON THE PRODUCT, PLEASE CONTACT STÄRKE.

140mm Framing / RAB / 70mm Brick Veneer

Smartslide

Timber ground floor, Fully-rebated

FLASHING TAPE LAPPED  
OVER HEAD & SILL  
FLASHING

PROPRIETARY HEAD &  
SILL FLASHING BY  
STARKE  
SQ CUT @ FRAME  
PLUS 60mm

TESCON EXTORA PROFIL  
FLASHING TAPE TO  
EXTERNAL HEAD & JAMBS  
RECOMMENDED FOR  
"EXTRA HIGH" WIND ZONE  
& ABOVE, OR FOR  
IMPROVED THERMAL  
PERFORMANCE.

STARKE  
AMBIANCE INLINE  
WINDOW SYSTEM -  
MASTERSPEC  
4541SU uPVC

STARKE  
AMBIANCE INLINE  
WINDOW SYSTEM -  
MASTERSPEC  
4541SU uPVC

DECK  
ILLUSTRATED  
LEVEL WITH  
INTERNAL  
FLOOR FINISH

JOINERY SIZE

JOINERY SIZE

30

5 Min

180 Nom

7.5 x 102 SS SCREWS  
@ 450 CTRS

TESCON EXTORA PROFIL AIR-SEAL  
TAPE TO ALL 4 SIDES INTERNALLY

STARKITRAVE FAST  
ARCHITRAVE & REVEAL  
SYSTEM (EX 70)

**\*IMPORTANT\***  
IT IS CRITICAL THAT THE JOINERY  
SILL IS PACKED PERFECTLY LEVEL  
TO ENSURE THE CORRECT  
OPERATION OF ANY HIGH  
PERFORMANCE DOOR.

STARKE FIXING STRAPS  
@ 450 CTRS

TESCON EXTORA PROFIL AIR-SEAL  
TAPE TO ALL 4 SIDES INTERNALLY

PACKING/INFILL BY  
OTHERS

WRAP/TAPE/DPM  
RETURN INTO  
OPENING BY OTHERS

10g x 60 SS SCREWS  
@ 450 CTRS

7.5 x 102 SS SCREWS  
@ 450 CTRS

STARKITRAVE FAST ARCHITRAVE &  
REVEAL SYSTEM (EX 70)

TESCON EXTORA PROFIL AIR-SEAL  
TAPE TO ALL 4 SIDES INTERNALLY

STARKE  
AMBIANCE INLINE  
WINDOW SYSTEM -  
MASTERSPEC  
4541SU uPVC

FLASHING BY OTHERS

TESCON EXTORA PROFIL FLASHING TAPE  
TO EXTERNAL HEAD & JAMBS  
RECOMMENDED FOR "EXTRA HIGH"  
WIND ZONE & ABOVE, OR FOR  
IMPROVED THERMAL PERFORMANCE.

PROPRIETARY JAMB  
FLASHING BY STARKE

JOINERY SIZE

29  
30  
HEAD & SILL  
FLASHING

NO PEF ROD, FOAM OR WET  
SEALANT REQUIRED.  
AIR-TIGHTNESS IS PROVIDED BY  
AIR-SEAL TAPE

# AMBIANCE

Inline Window Systems

# STARKE

DISCLAIMER: THIS INFORMATION IS FOR GUIDANCE ONLY. STARKE GROUP LIMITED (TRADING AS STÄRKE) MAKES NO WARRANTY OR REPRESENTATION OF ANY KIND, EXPRESS OR IMPLIED, REGARDING THE COMPLETENESS, ACCURACY, RELIABILITY OR SUITABILITY OF THE PRODUCT SHOWN HEREIN. RELIANCE ON THIS INFORMATION IS AT THE CUSTOMER'S SOLE RISK. IT IS RECOMMENDED THAT THE CUSTOMER SEEKS PROFESSIONAL ADVICE ON THE SUITABILITY OF THE PRODUCT FOR SPECIFIC APPLICATIONS. FOR TECHNICAL INFORMATION ON THE PRODUCT, PLEASE CONTACT STÄRKE.