

**SIPS WALL FRAMING
45mm CAVITY
METAL CLADDING**

AMBIANCE™

Inline Window Systems

**STÄRKE**

F1	FLASHINGS
A1-G-60	FIXED-LITE WINDOW
A2-G-60	AWNING OPEN OUT WINDOW
A3-G-60	OPEN-IN / TILT & TURN WINDOW
A4-G-60	SLIDING WINDOW
B1-G-60	TIMBER FLOOR NON REBATED - FULL HEIGHT FIXED-LITE
B2-G-60	TIMBER FLOOR NON REBATED - HINGED DOOR OPEN OUT
B3-G-60	TIMBER FLOOR NON REBATED - HINGED DOOR OPEN IN
B4-G-60	TIMBER FLOOR NON REBATED - SLIDING DOOR
B5-G-60	TIMBER FLOOR NON REBATED - STACKER DOOR
B6-G-60	TIMBER FLOOR NON REBATED - LOW PROFILE HINGED DOOR OPEN OUT
B7-G-60	TIMBER FLOOR NON REBATED - LOW PROFILE HINGED DOOR OPEN IN
E1-G-60	CONCRETE GND FLOOR NON REBATED - FULL HEIGHT FIXED-LITE
E2-G-60	CONCRETE GND FLOOR NON REBATED - HINGED DOOR OPEN OUT
E3-G-60	CONCRETE GND FLOOR NON REBATED - HINGED DOOR OPEN IN
E4-G-60	CONCRETE GND FLOOR NON REBATED - SLIDING DOOR
E5-G-60	CONCRETE GND FLOOR NON REBATED - STACKER DOOR
E6-G-60	CONCRETE GND FLOOR NON REBATED - LOW PROFILE HINGED DOOR OPEN OUT
E7-G-60	CONCRETE GND FLOOR NON REBATED - LOW PROFILE HINGED DOOR OPEN IN



interactive assembly
instructions available

<http://wksp.nz/sg-wfl-w70>

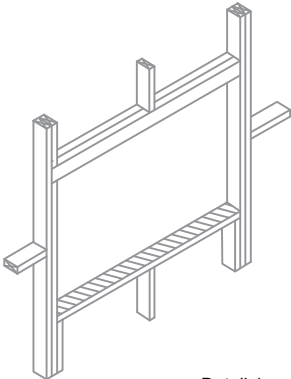
Opening Preparation

The preparation of the wall opening prior to the installation of the window or door is essentially the same regardless of cladding option. The following offers a step by step guide to the process.

Step P1 – Preliminary Check

Before proceeding with the installation and preparation of the wall underlay, the installer should examine and confirm that the sill trimmer is essentially level, straight and free of twist. It is particularly important that it is well secured and does not slope toward the interior of the building. If necessary, the sill trimmer should be planed to ensure it does not exhibit any of the above conditions.

The sill trimmer must be designed to comply with NZS3604.



Detail 1

Note: Projects within the new Extra High wind zone require the use of a Rigid Underlay in addition to and underneath a flexible wall underlay, except as noted in the attached comment.

This needs to be considered when sizing the windows.

9.1.7.2 Rigid *wall underlays*, in association with *drained cavities* (including *direct fixed* corrugated profile metal) are required in Extra High *wind zones*. Refer to Table 3 and Table 23. Rigid *underlays* are also required to *external walls* of attached garages that are unlined. Refer Paragraphs 1.1.1 & 9.1.3.4 c).

Rigid *wall underlays* shall be in accordance with Table 23, and shall:

- a) Be minimum 7mm plywood, or 6mm fibre cement sheet
- b) Be installed with sheet edges fixed over solid framing
- c) Be over-fixed with a flexible *wall underlay* from Table 23 and installed as in Paragraph 9.1.7.1

COMMENT:
Some proprietary systems may not require the addition of a flexible *underlay*

Step P2 – Cut the Underlay

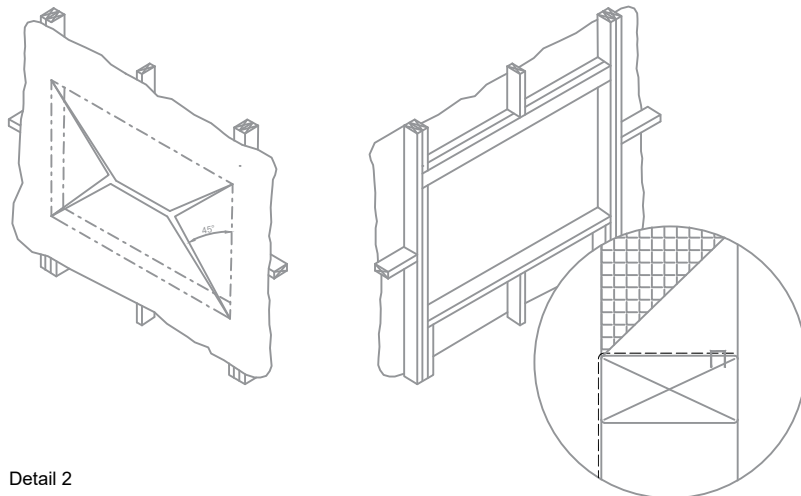
Clause 9.1.5 a) describes the application of a flexible wall underlay.

Amend 5 Aug 2011	9.1.5 Wall underlays to wall openings
	Prior to window or door installation:
Amend 5 Aug 2011	Flexible wall underlay shall be cut and dressed into all sides of openings as per Figure 72A and B,

To achieve this, follow these steps;

- Cut the building underlay at 45° away from each corner.
- Fold the flaps tightly into the opening and secure to the framing on all sides.
- Trim off excess underlay after fixing.

Note: Figures 72A & 72B do not show the inner extent of the flexible wall underlay. The industry trend has been to cut this off at the inner corner of the framing as wrapping around sometimes interferes with the internal linings. Ensure the underlay is fixed tightly to the framework.



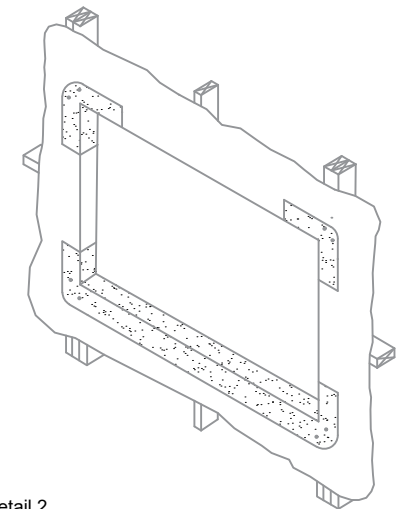
Detail 2

Step P3 – Flexible Flashing Tape

After ensuring the flashing tape to be used meets the criteria set out in Clause 9.1.5 b), follow these steps to satisfy the clause;

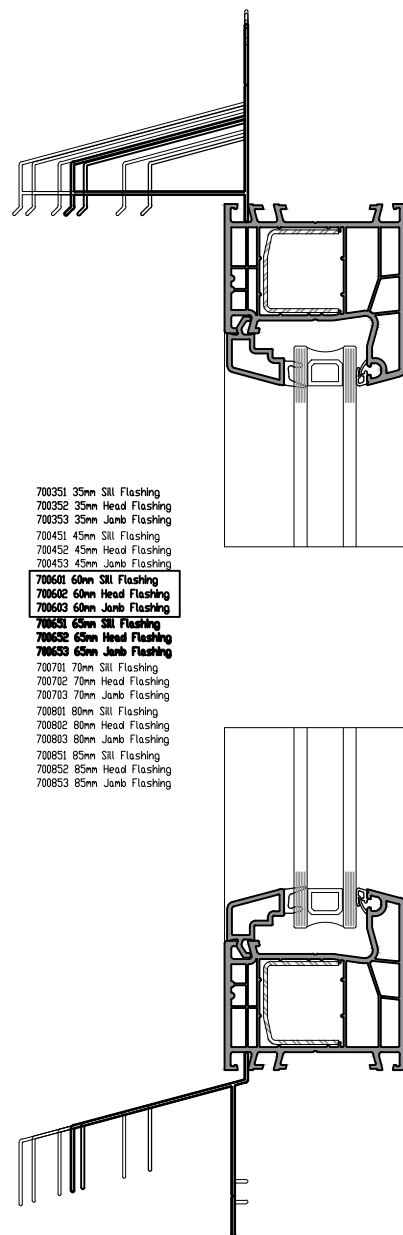
- Cut the flashing tape for the sill at least 200mm wider than the opening.
- Fit the tape, as described in the manufacturers literature, with the inner edge of the tape flush with the inside line of the framing, so that it extends a minimum of 100mm up each jamb ensuring timber framing is covered.
- Ensure the tape is securely adhered to the underlay on all surfaces and fits tightly into each of the corners.
- Cut two more pieces of tape at least 200mm long and fit into each of the upper corners as described above ensuring timber framing is covered.

Amend 5 Aug 2011	b) Flexible flashing tape shall be applied to head and sill framing as shown in Figures 72A and 72B. Flexible flashing tape shall:
Amend 5 Aug 2011	i) Comply with parts 3.2 and 4 of ICBO Acceptance Criteria AC148, and
Amend 5 Aug 2011	ii) be compatible with the wall underlay
	COMMENT:
	Dressing the wall underlay around the framing timber and providing a flexible air seal limits airflow around the window reveal.
	The flexible flashing tape keeps any water that does get past the cladding, or through the joinery, from direct contact with the timber.



Detail 2

Note: Ensure all exposed timber is covered, particularly in the corners. This may mean the tape has to extend further than nominated.



700351 35mm Sill Flashing
700352 35mm Head Flashing
700353 35mm Jamb Flashing
700451 45mm Sill Flashing
700452 45mm Head Flashing
700453 45mm Jamb Flashing

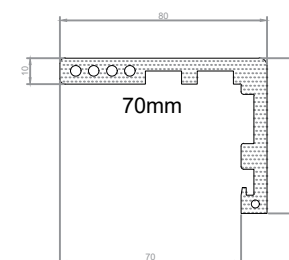
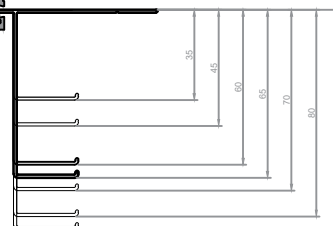
700601 60mm Sill Flashing
700602 60mm Head Flashing
700603 60mm Jamb Flashing

700701 70mm Sill Flashing
700702 70mm Head Flashing
700703 70mm Jamb Flashing

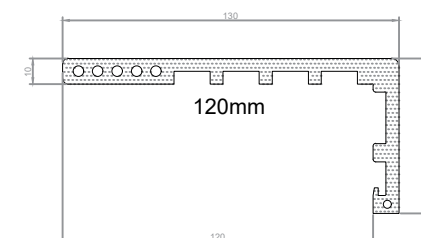
700801 80mm Sill Flashing
700802 80mm Head Flashing
700803 80mm Jamb Flashing

700851 85mm Sill Flashing
700852 85mm Head Flashing
700853 85mm Jamb Flashing

FLASHING KITS	RECOMMENDED CLADDING DIMs	SOME TYPICAL APPLICATIONS
35mm	25 to 29mm	19 Cavity & 9mm Sheet -OR- 19 Cavity & Folded Metal Cladding
45mm	35 to 39mm	19 Cavity & 19mm Sheet -OR- 19 Cavity & Rusticated Weatherboard
60mm	50 to 54mm	19 Cavity & Bevel-Back Weatherboard -OR- 45 Cavity & 9mm Sheet
65mm	55 to 59mm	50 Cavity & 70 Brick -OR- 45 Cavity & Folded Metal Cladding
70mm	60 to 69mm	45 Cavity & 19mm Sheet -OR- 45 Cavity & Rusticated Weatherboard
80mm	70 to 74mm	19 Cavity & Bevel-Back Weatherboard with Facings
85mm	75 to 79mm	45 Cavity & Bevel-Back Weatherboard



STARKITRAVE - FAST
ARCHITRAVE & REVEAL SYSTEM

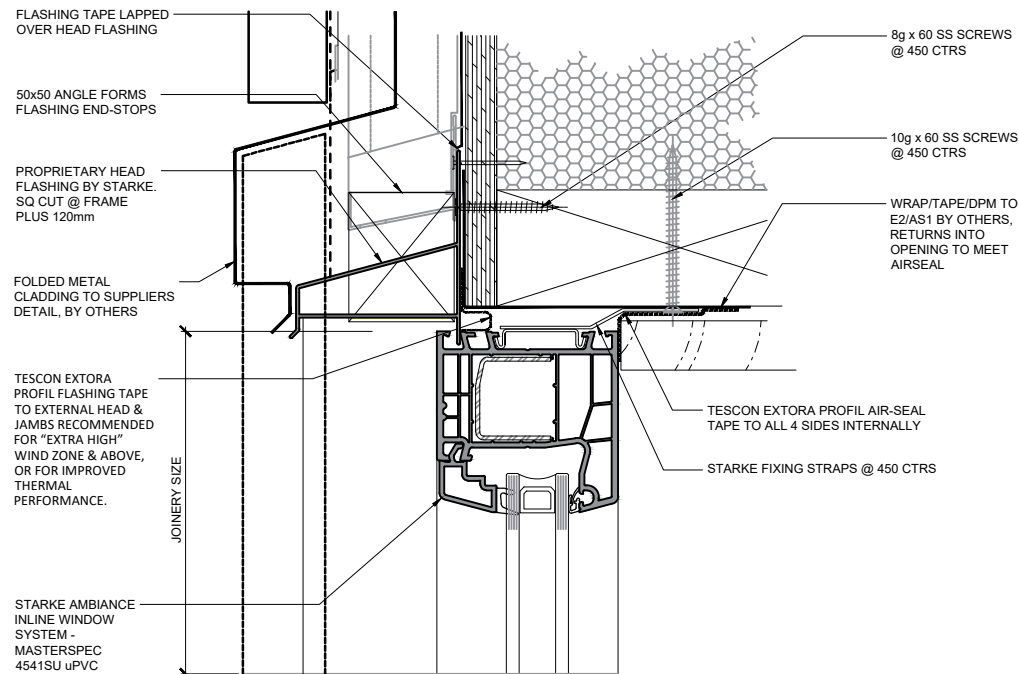


AMBIANCE

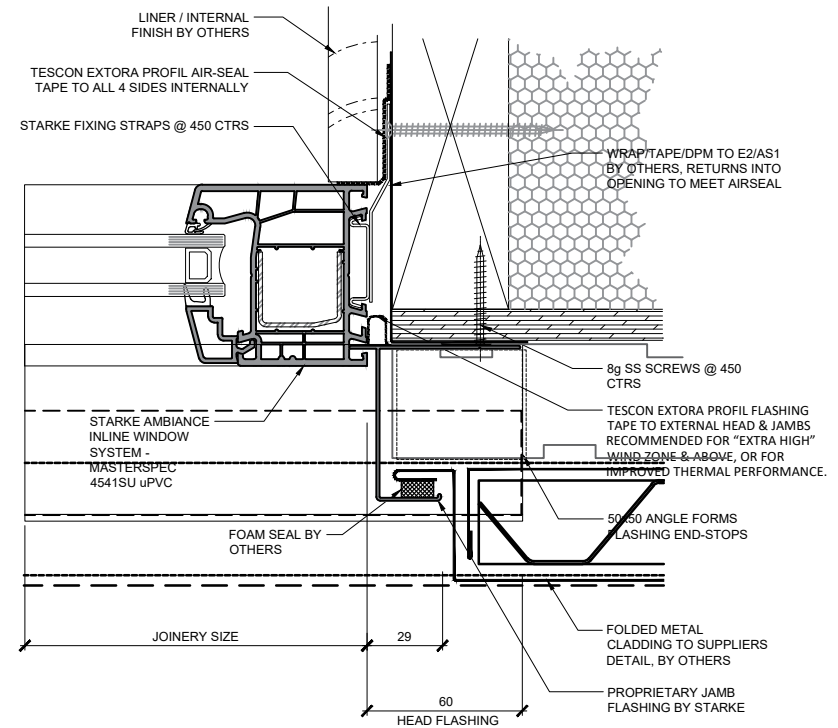
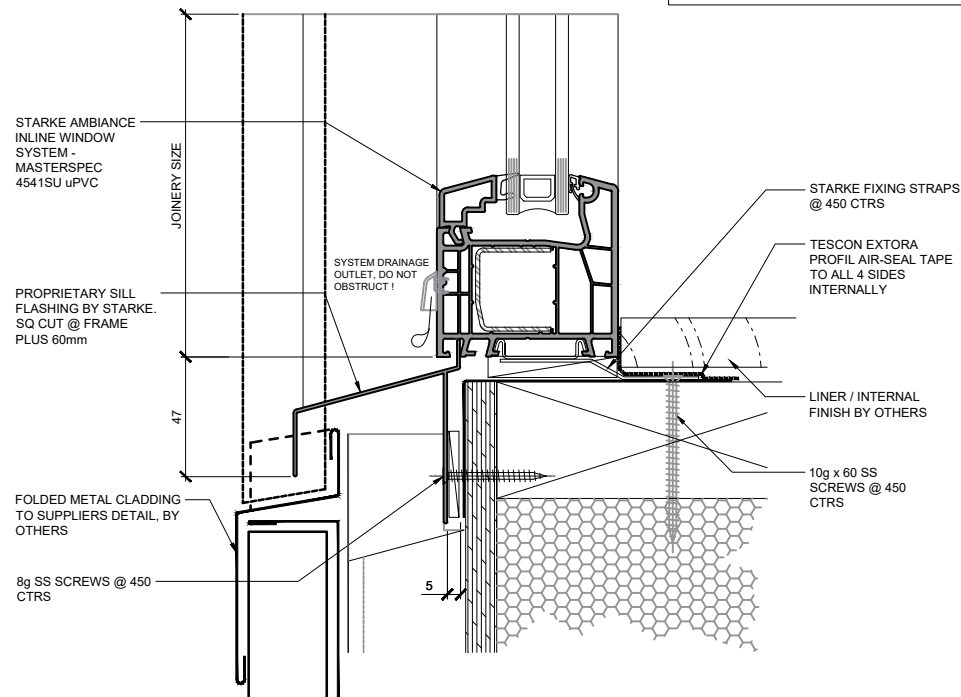
Inline Window Systems

STÄRKE

DISCLAIMER: THIS INFORMATION IS FOR GUIDANCE ONLY. STÄRKE GROUP LIMITED (TRADING AS STÄRKE) MAKES NO WARRANTY OR REPRESENTATION OF ANY KIND, EXPRESS OR IMPLIED, REGARDING THE COMPLETENESS, ACCURACY, RELIABILITY OR SUITABILITY OF THE PRODUCT SHOWN HEREIN. RELIANCE ON THIS INFORMATION IS AT THE CUSTOMER'S SOLE RISK. IT IS RECOMMENDED THAT THE CUSTOMER SEEKS PROFESSIONAL ADVICE ON THE SUITABILITY OF THE PRODUCT FOR SPECIFIC APPLICATIONS. FOR TECHNICAL INFORMATION ON THE PRODUCT, PLEASE CONTACT STÄRKE.



CLADDING DETAILS ARE INDICATIVE ONLY & WILL VARY WITH CLADDING TYPE & SUPPLIER.



AMBIANCE

Inline Window Systems

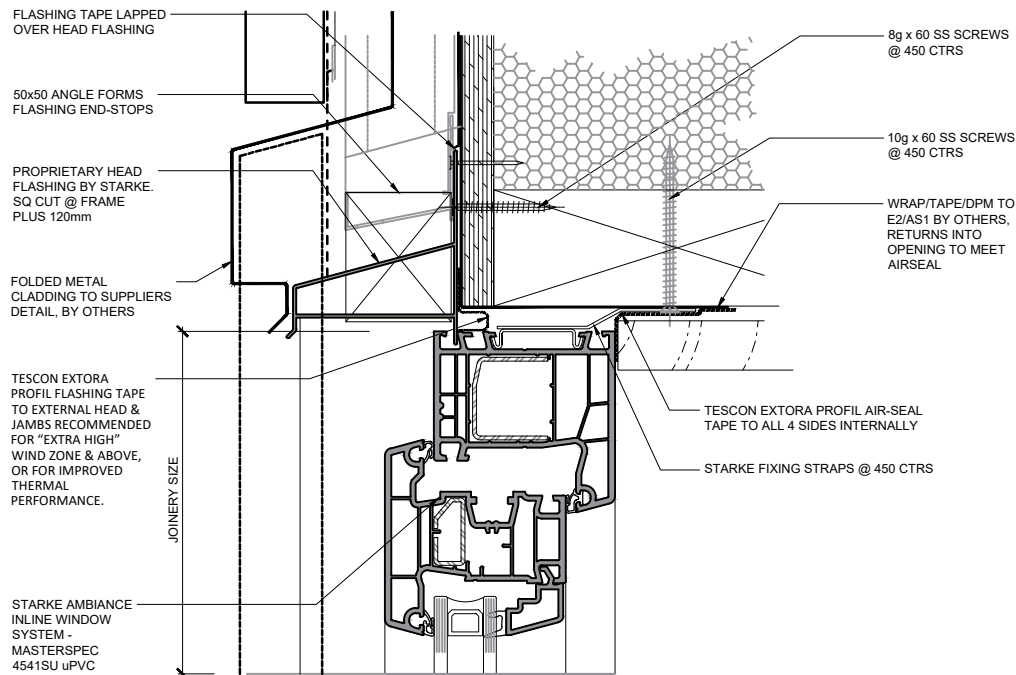
STARKE

DISCLAIMER: THIS INFORMATION IS FOR GUIDANCE ONLY. STARKE GROUP LIMITED (TRADING AS STARKE) MAKES NO WARRANTY OR REPRESENTATION OF ANY KIND, EXPRESS OR IMPLIED, REGARDING THE COMPLETENESS, ACCURACY, RELIABILITY OR SUITABILITY OF THE PRODUCT SHOWN HEREIN. RELIANCE ON THIS INFORMATION IS AT THE CUSTOMER'S SOLE RISK. IT IS RECOMMENDED THAT THE CUSTOMER SEEKS PROFESSIONAL ADVICE ON THE SUITABILITY OF THE PRODUCT FOR SPECIFIC APPLICATIONS. FOR TECHNICAL INFORMATION ON THE PRODUCT, PLEASE CONTACT STARKE.

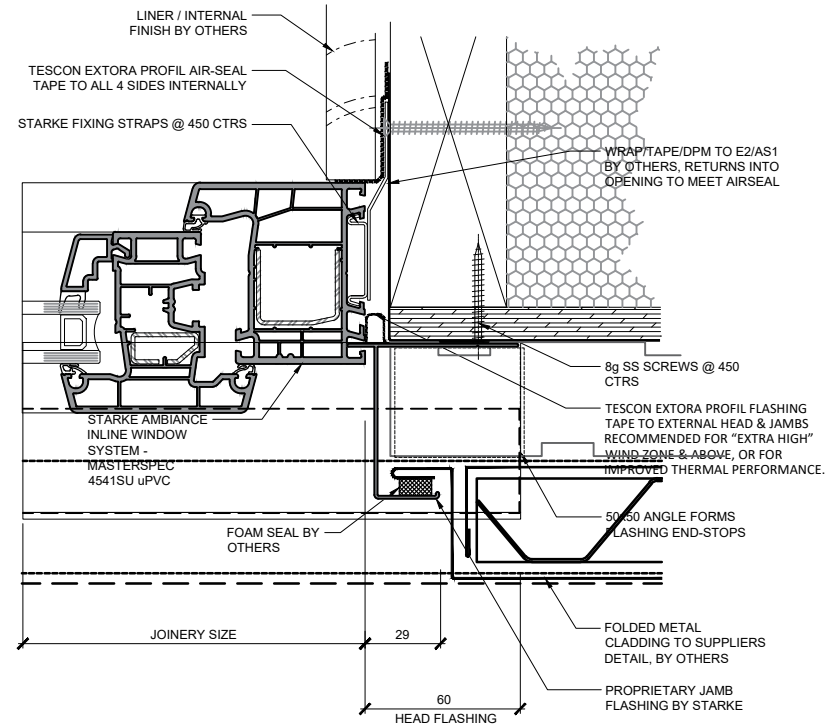
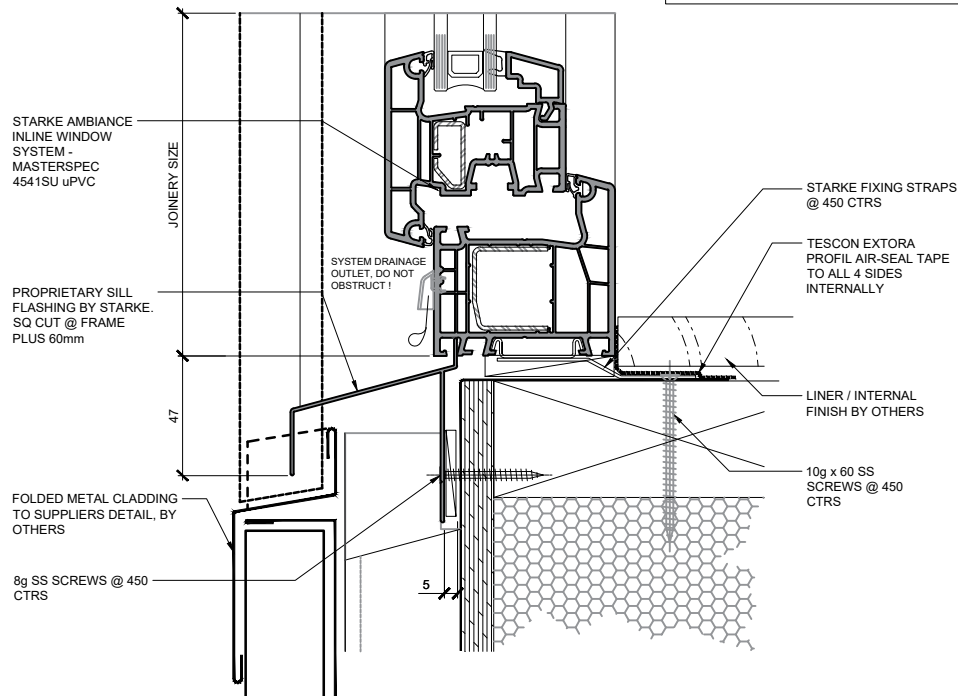
SIPS / 45 Cavity / Metal Cladding

Awning Window

NO PEF ROD, FOAM OR WET
SEALANT REQUIRED.
AIR-TIGHTNESS IS PROVIDED BY
AIR-SEAL TAPE



CLADDING DETAILS ARE
INDICATIVE ONLY & WILL VARY
WITH CLADDING TYPE &
SUPPLIER.

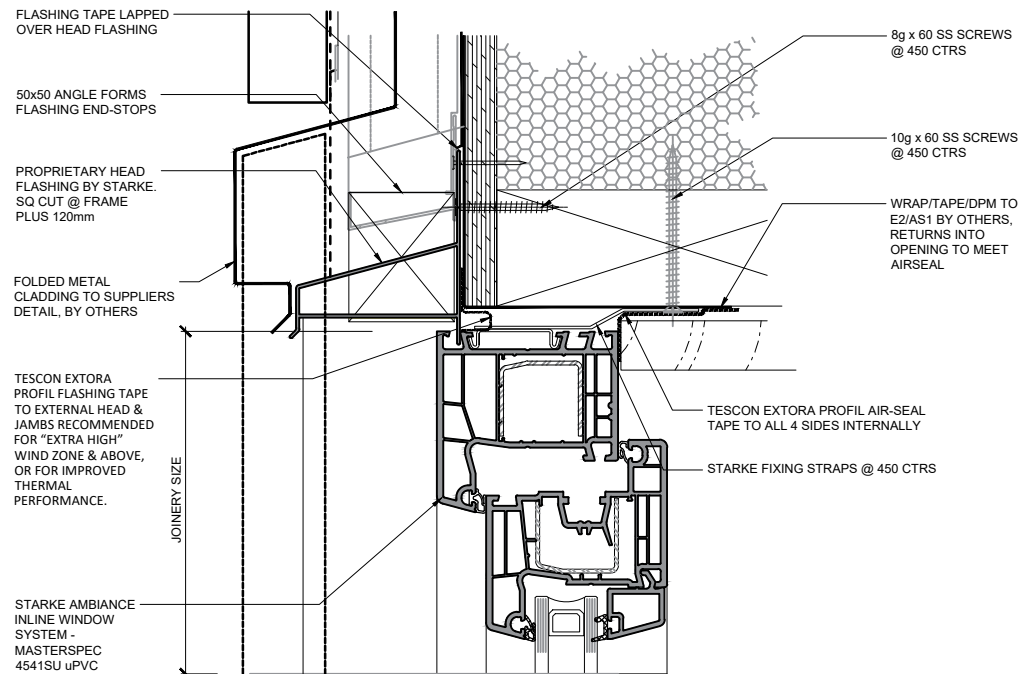


AMBIANCE

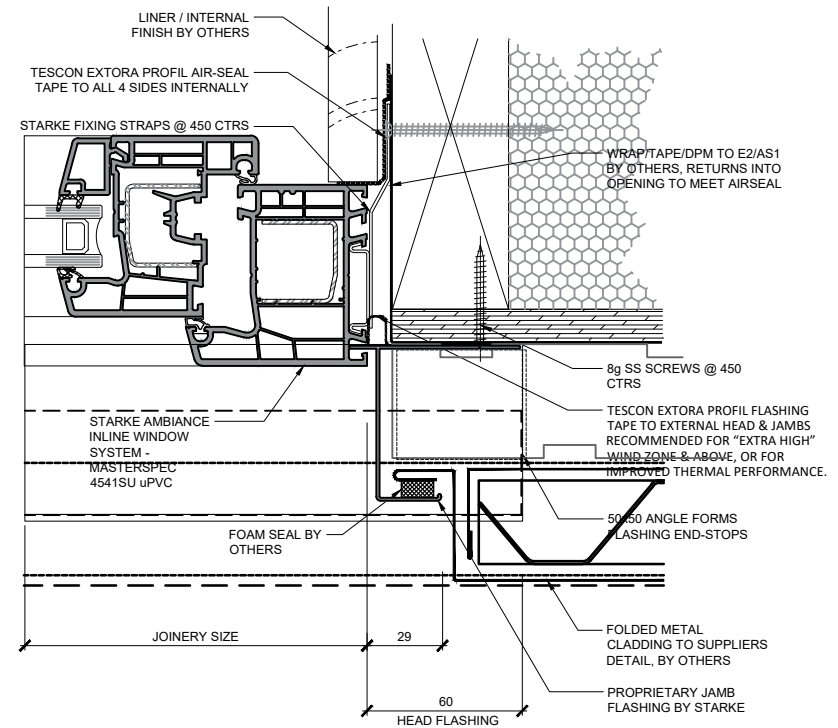
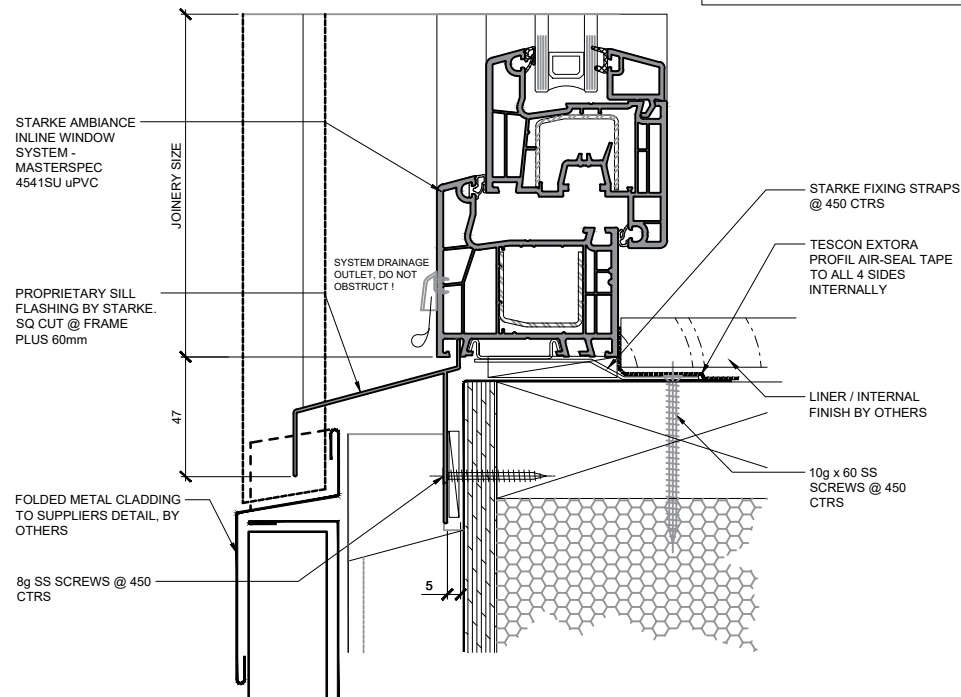
Inline Window Systems

STARKE

DISCLAIMER: THIS INFORMATION IS FOR GUIDANCE ONLY. STARKE GROUP LIMITED (TRADING AS STARKE) MAKES NO WARRANTY OR REPRESENTATION OF ANY KIND, EXPRESS OR IMPLIED, REGARDING THE COMPLETENESS, ACCURACY, RELIABILITY OR SUITABILITY OF THE PRODUCT SHOWN HEREIN. RELIANCE ON THIS INFORMATION IS AT THE CUSTOMER'S SOLE RISK. IT IS RECOMMENDED THAT THE CUSTOMER SEEKS PROFESSIONAL ADVICE ON THE SUITABILITY OF THE PRODUCT FOR SPECIFIC APPLICATIONS. FOR TECHNICAL INFORMATION ON THE PRODUCT, PLEASE CONTACT STARKE.



CLADDING DETAILS ARE
INDICATIVE ONLY & WILL VARY
WITH CLADDING TYPE &
SUPPLIER.



AMBIANCE

Inline Window Systems

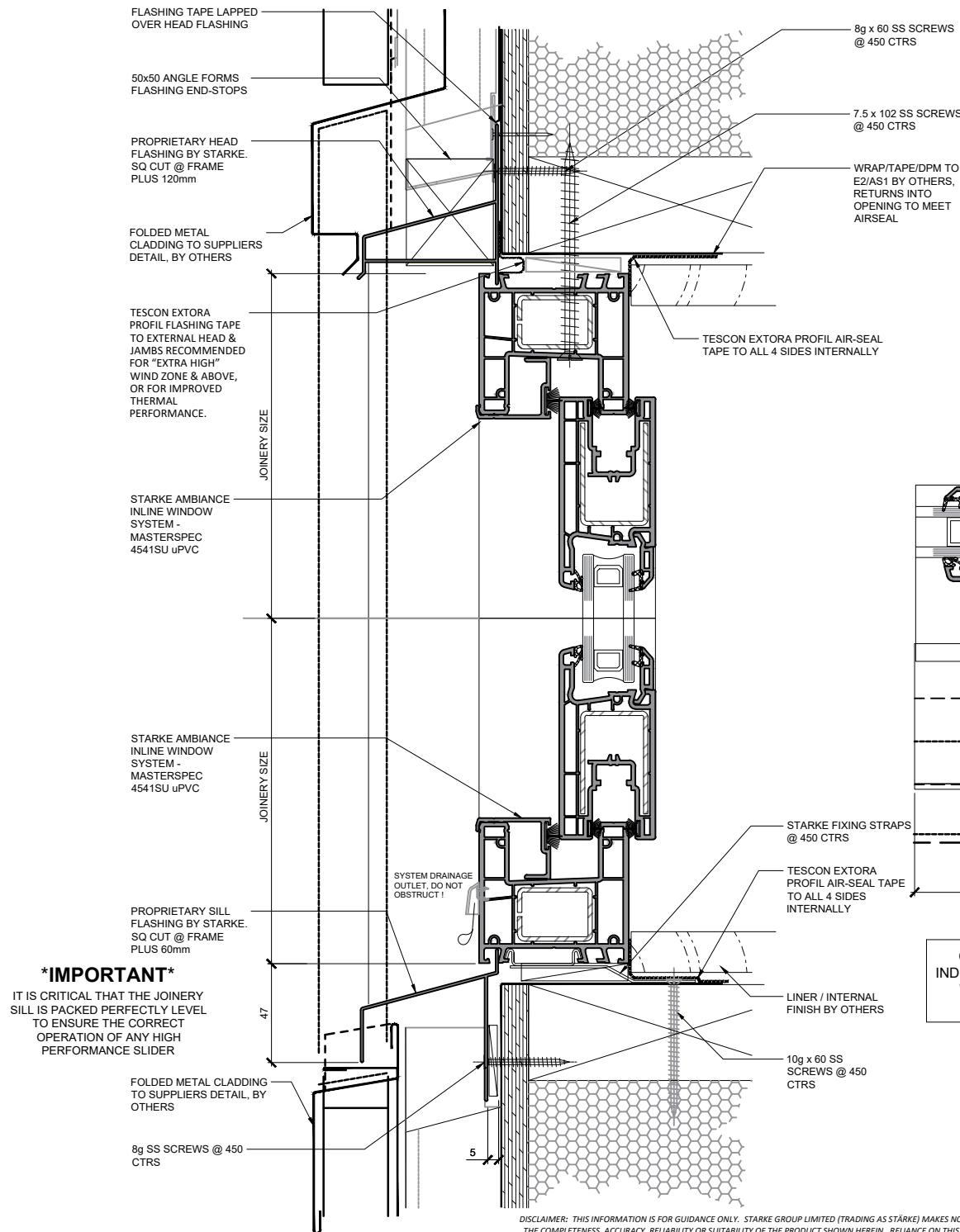
STARKE

DISCLAIMER: THIS INFORMATION IS FOR GUIDANCE ONLY. STARKE GROUP LIMITED (TRADING AS STARKE) MAKES NO WARRANTY OR REPRESENTATION OF ANY KIND, EXPRESS OR IMPLIED, REGARDING THE COMPLETENESS, ACCURACY, RELIABILITY OR SUITABILITY OF THE PRODUCT SHOWN HEREIN. RELIANCE ON THIS INFORMATION IS AT THE CUSTOMER'S SOLE RISK. IT IS RECOMMENDED THAT THE CUSTOMER SEEKS PROFESSIONAL ADVICE ON THE SUITABILITY OF THE PRODUCT FOR SPECIFIC APPLICATIONS. FOR TECHNICAL INFORMATION ON THE PRODUCT, PLEASE CONTACT STARKE.

SIPS / 45 Cavity / Metal Cladding

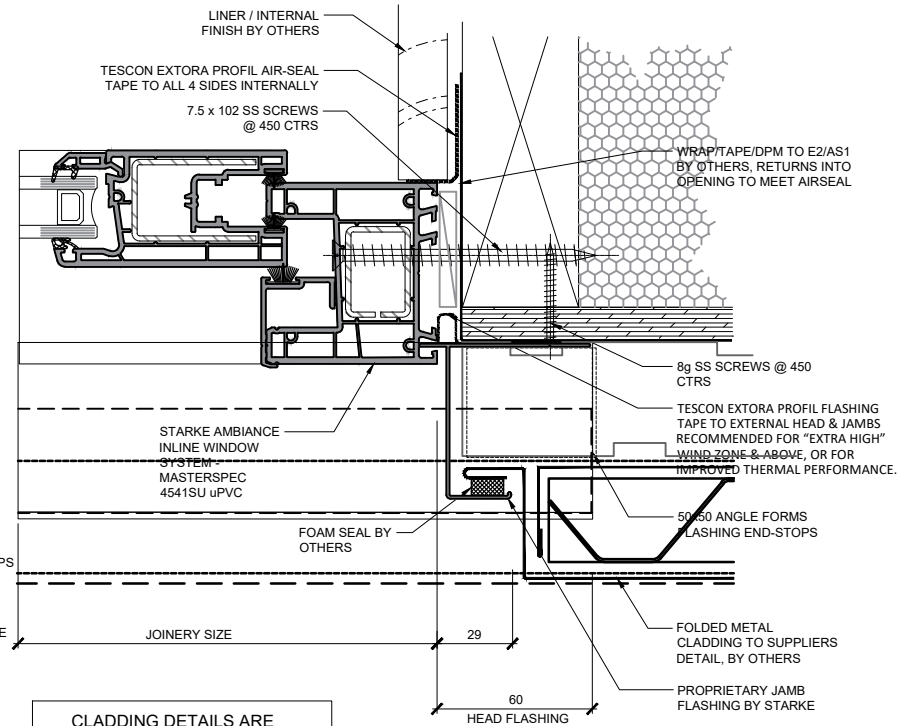
Sliding Window

NO PEF ROD, FOAM OR WET SEALANT REQUIRED.
AIR-TIGHTNESS IS PROVIDED BY AIR-SEAL TAPE



IMPORTANT

IT IS CRITICAL THAT THE JOINERY SILL IS PACKED PERFECTLY LEVEL TO ENSURE THE CORRECT OPERATION OF ANY HIGH PERFORMANCE SLIDER



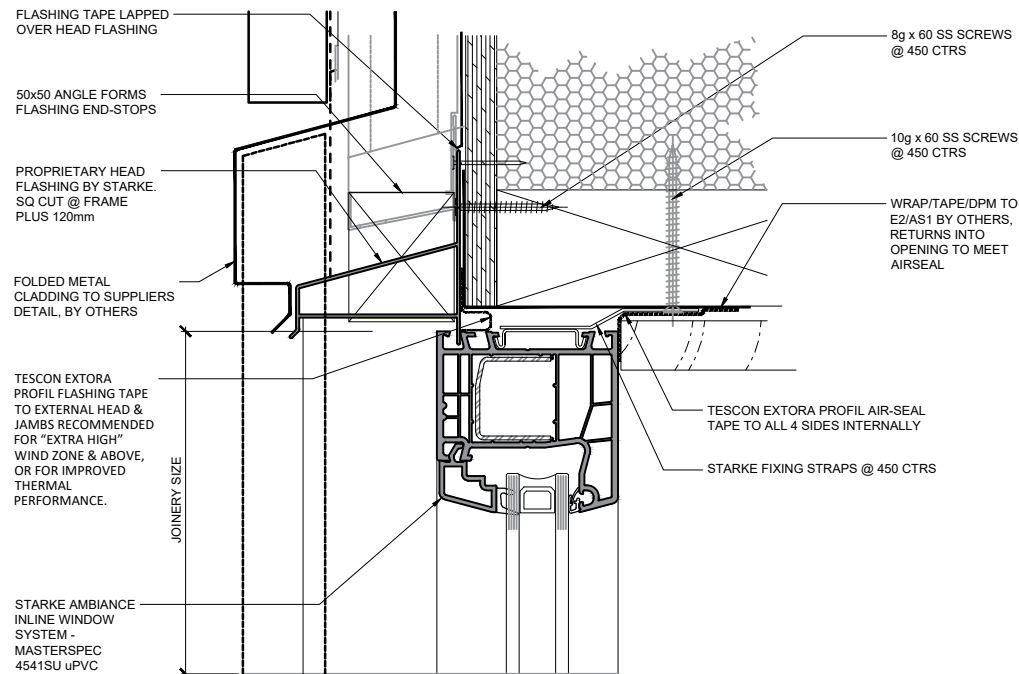
CLADDING DETAILS ARE INDICATIVE ONLY & WILL VARY WITH CLADDING TYPE & SUPPLIER.

AMBIANCE

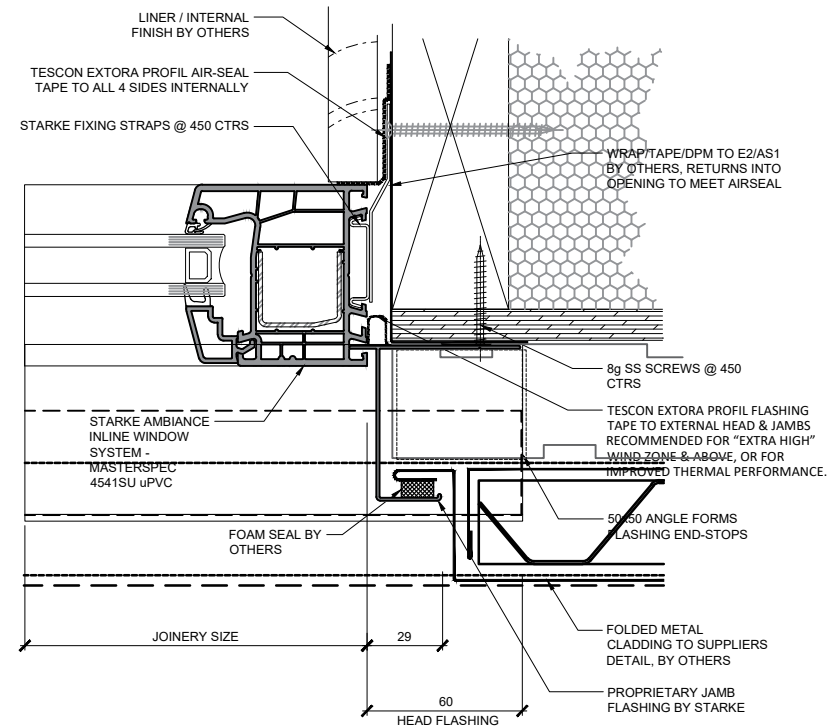
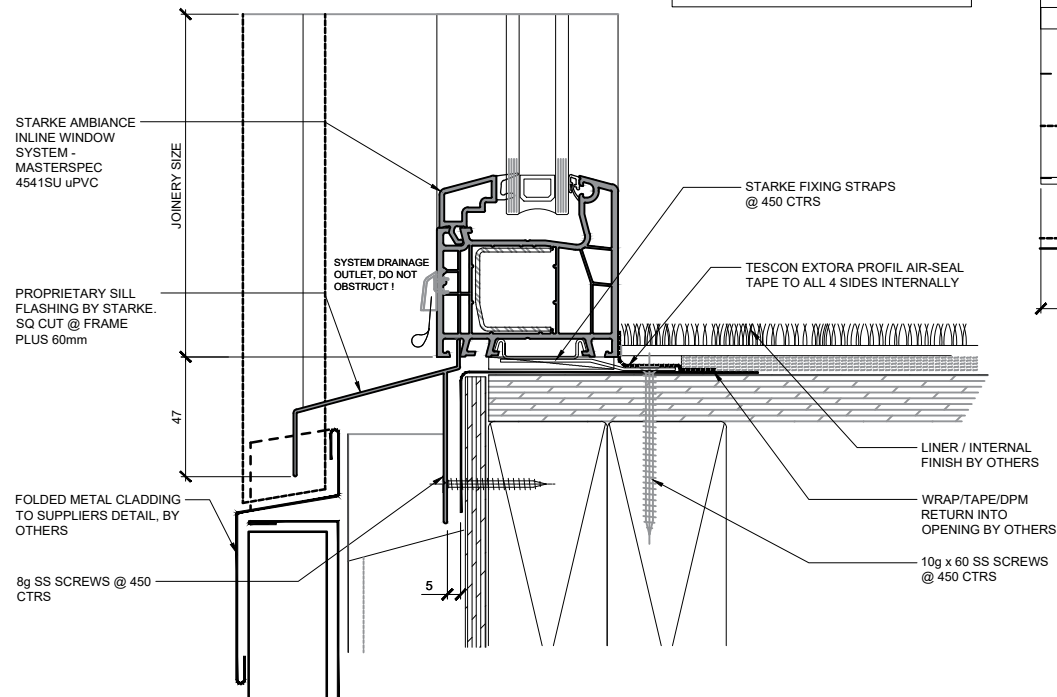
Inline Window Systems

STARKE

DISCLAIMER: THIS INFORMATION IS FOR GUIDANCE ONLY. STARKE GROUP LIMITED (TRADING AS STARKE) MAKES NO WARRANTY OR REPRESENTATION OF ANY KIND, EXPRESS OR IMPLIED, REGARDING THE COMPLETENESS, ACCURACY, RELIABILITY OR SUITABILITY OF THE PRODUCT SHOWN HEREIN. RELIANCE ON THIS INFORMATION IS AT THE CUSTOMER'S SOLE RISK. IT IS RECOMMENDED THAT THE CUSTOMER SEEKS PROFESSIONAL ADVICE ON THE SUITABILITY OF THE PRODUCT FOR SPECIFIC APPLICATIONS. FOR TECHNICAL INFORMATION ON THE PRODUCT, PLEASE CONTACT STARKE.



CLADDING DETAILS ARE
INDICATIVE ONLY & WILL VARY
WITH CLADDING TYPE &
SUPPLIER.



AMBIANCE

Inline Window Systems

STARKE

DISCLAIMER: THIS INFORMATION IS FOR GUIDANCE ONLY. STARKE GROUP LIMITED (TRADING AS STARKE) MAKES NO WARRANTY OR REPRESENTATION OF ANY KIND, EXPRESS OR IMPLIED, REGARDING THE COMPLETENESS, ACCURACY, RELIABILITY OR SUITABILITY OF THE PRODUCT SHOWN HEREIN. RELIANCE ON THIS INFORMATION IS AT THE CUSTOMER'S SOLE RISK. IT IS RECOMMENDED THAT THE CUSTOMER SEEKS PROFESSIONAL ADVICE ON THE SUITABILITY OF THE PRODUCT FOR SPECIFIC APPLICATIONS. FOR TECHNICAL INFORMATION ON THE PRODUCT, PLEASE CONTACT STARKE.

FLASHING TAPE LAPPED
OVER HEAD FLASHING

50x50 ANGLE FORMS
FLASHING END-STOPS

PROPRIETARY HEAD
FLASHING BY STARKE.
SQ CUT @ FRAME
PLUS 120mm

FOLDED METAL
CLADDING TO SUPPLIERS
DETAIL, BY OTHERS

TESCON EXTORA
PROFIL FLASHING TAPE
TO EXTERNAL HEAD &
JAMBS RECOMMENDED
FOR "EXTRA HIGH"
WIND ZONE & ABOVE,
OR FOR IMPROVED
THERMAL
PERFORMANCE.

STARKE AMBIANCE
INLINE WINDOW
SYSTEM -
MASTERSPEC
4541SU uPVC

JOINERY SIZE

8g x 60 SS SCREWS
@ 450 CTRS

10g x 60 SS SCREWS
@ 450 CTRS

WRAP/TAPE/DPM TO
E2/AS1 BY OTHERS,
RETURNS INTO
OPENING TO MEET
AIRSEAL

TESCON EXTORA PROFIL AIR-SEAL
TAPE TO ALL 4 SIDES INTERNALLY

STARKE FIXING STRAPS @ 450 CTRS

STARKE AMBIANCE
INLINE WINDOW
SYSTEM -
MASTERSPEC
4541SU uPVC

JOINERY SIZE

STARKE FIXING STRAPS
@ 450 CTRS

TESCON EXTORA PROFIL AIR-SEAL
TAPE TO ALL 4 SIDES INTERNALLY

PROPRIETARY SILL
FLASHING BY STARKE.
SQ CUT @ FRAME
PLUS 60mm

SYSTEM DRAINAGE
OUTLET, DO NOT
OBSTRUCT!

FOLDED METAL CLADDING
TO SUPPLIERS
DETAIL, BY
OTHERS

8g SS SCREWS @ 450
CTRS

5

LINER / INTERNAL
FINISH BY OTHERS

WRAP/TAPE/DPM
RETURN INTO
OPENING BY OTHERS

10g x 60 SS SCREWS
@ 450 CTRS

DISCLAIMER: THIS INFORMATION IS FOR GUIDANCE ONLY. STARKE GROUP LIMITED (TRADING AS STÄRKE) MAKES NO WARRANTY OR REPRESENTATION OF ANY KIND, EXPRESS OR IMPLIED, REGARDING THE COMPLETENESS, ACCURACY, RELIABILITY OR SUITABILITY OF THE PRODUCT SHOWN HEREIN. RELIANCE ON THIS INFORMATION IS AT THE CUSTOMER'S SOLE RISK. IT IS RECOMMENDED THAT THE CUSTOMER SEEKS PROFESSIONAL ADVICE ON THE SUITABILITY OF THE PRODUCT FOR SPECIFIC APPLICATIONS. FOR TECHNICAL INFORMATION ON THE PRODUCT, PLEASE CONTACT STÄRKE.

SIPS / 45 Cavity / Metal Cladding

Hinged door Open out

Timber mid-floor, Non-rebated

NO PEF ROD, FOAM OR WET
SEALANT REQUIRED.
AIR-TIGHTNESS IS PROVIDED BY
AIR-SEAL TAPE

LINER / INTERNAL
FINISH BY OTHERS

TESCON EXTORA PROFIL AIR-SEAL
TAPE TO ALL 4 SIDES INTERNALLY

STARKE FIXING STRAPS @ 450 CTRS

WRAP/TAPE/DPM TO E2/AS1
BY OTHERS, RETURNS INTO
OPENING TO MEET AIRSEAL

8g SS SCREWS @ 450
CTRS

TESCON EXTORA PROFIL FLASHING
TAPE TO EXTERNAL HEAD & JAMBS
RECOMMENDED FOR "EXTRA HIGH"
WIND ZONE & ABOVE, OR FOR
IMPROVED THERMAL PERFORMANCE.

50x50 ANGLE FORMS
FLASHING END-STOPS

FOLDED METAL
CLADDING TO SUPPLIERS
DETAIL, BY OTHERS

PROPRIETARY JAMB
FLASHING BY STARKE

JOINERY SIZE

29

60
HEAD FLASHING

CLADDING DETAILS ARE
INDICATIVE ONLY & WILL VARY
WITH CLADDING TYPE &
SUPPLIER.

AMBIANCE

Inline Window Systems

STÄRKE

FLASHING TAPE LAPPED
OVER HEAD FLASHING

50x50 ANGLE FORMS
FLASHING END-STOPS

PROPRIETARY HEAD
FLASHING BY STARKE.
SQ CUT @ FRAME
PLUS 120mm

FOLDED METAL
CLADDING TO SUPPLIERS
DETAIL, BY OTHERS

TESCON EXTORA
PROFIL FLASHING TAPE
TO EXTERNAL HEAD &
JAMBS RECOMMENDED
FOR "EXTRA HIGH"
WIND ZONE & ABOVE,
OR FOR IMPROVED
THERMAL
PERFORMANCE.

STARKE AMBIANCE
INLINE WINDOW
SYSTEM -
MASTERSPEC
4541SU uPVC

JOINERY SIZE

8g x 60 SS SCREWS
@ 450 CTRS

10g x 60 SS SCREWS
@ 450 CTRS

WRAP/TAPE/DPM TO
E2/AS1 BY OTHERS,
RETURNS INTO
OPENING TO MEET
AIRSEAL

TESCON EXTORA PROFIL AIR-SEAL
TAPE TO ALL 4 SIDES INTERNALLY

STARKE FIXING STRAPS @ 450 CTRS

STARKE AMBIANCE
INLINE WINDOW
SYSTEM -
MASTERSPEC
4541SU uPVC

JOINERY SIZE

STARKE FIXING STRAPS
@ 450 CTRS

TESCON EXTORA PROFIL AIR-SEAL
TAPE TO ALL 4 SIDES INTERNALLY

PROPRIETARY SILL
FLASHING BY STARKE.
SQ CUT @ FRAME
PLUS 60mm

SYSTEM DRAINAGE
OUTLET, DO NOT
OBSTRUCT!

FOLDED METAL CLADDING
TO SUPPLIERS DETAIL, BY
OTHERS

8g SS SCREWS @ 450
CTRS

5

LINER / INTERNAL
FINISH BY OTHERS

WRAP/TAPE/DPM
RETURN INTO
OPENING BY OTHERS

10g x 60 SS SCREWS
@ 450 CTRS

SIPS / 45 Cavity / Metal Cladding

Hinged door Open in

Timber mid-floor, Non-rebated

NO PEF ROD, FOAM OR WET
SEALANT REQUIRED.
AIR-TIGHTNESS IS PROVIDED BY
AIR-SEAL TAPE

LINER / INTERNAL
FINISH BY OTHERS

TESCON EXTORA PROFIL AIR-SEAL
TAPE TO ALL 4 SIDES INTERNALLY

STARKE FIXING STRAPS @ 450 CTRS

WRAP/TAPE/DPM TO E2/AS1
BY OTHERS, RETURNS INTO
OPENING TO MEET AIRSEAL

8g SS SCREWS @ 450
CTRS

STARKE AMBIANCE
INLINE WINDOW
SYSTEM -
MASTERSPEC
4541SU uPVC

TESCON EXTORA PROFIL FLASHING
TAPE TO EXTERNAL HEAD & JAMBS
RECOMMENDED FOR "EXTRA HIGH"
WIND ZONE & ABOVE, OR FOR
IMPROVED THERMAL PERFORMANCE.

FOAM SEAL BY
OTHERS

50x50 ANGLE FORMS
FLASHING END-STOPS

FOLDED METAL
CLADDING TO SUPPLIERS
DETAIL, BY OTHERS

PROPRIETARY JAMB
FLASHING BY STARKE

JOINERY SIZE

29

60
HEAD FLASHING

CLADDING DETAILS ARE
INDICATIVE ONLY & WILL VARY
WITH CLADDING TYPE &
SUPPLIER.

AMBIANCE[®]

Inline Window Systems

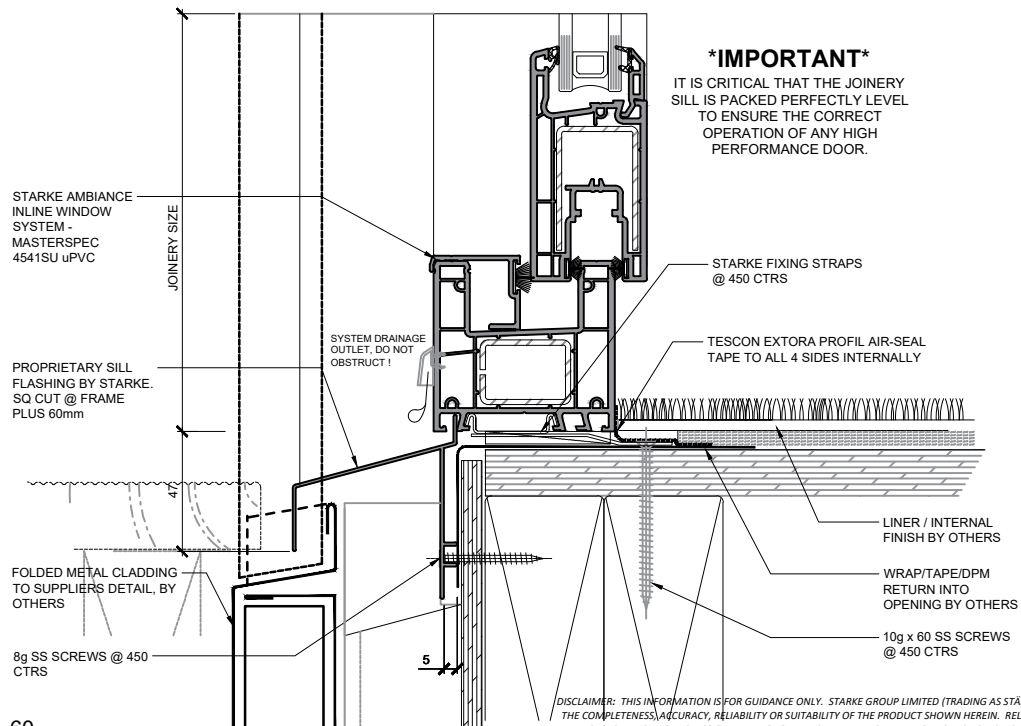
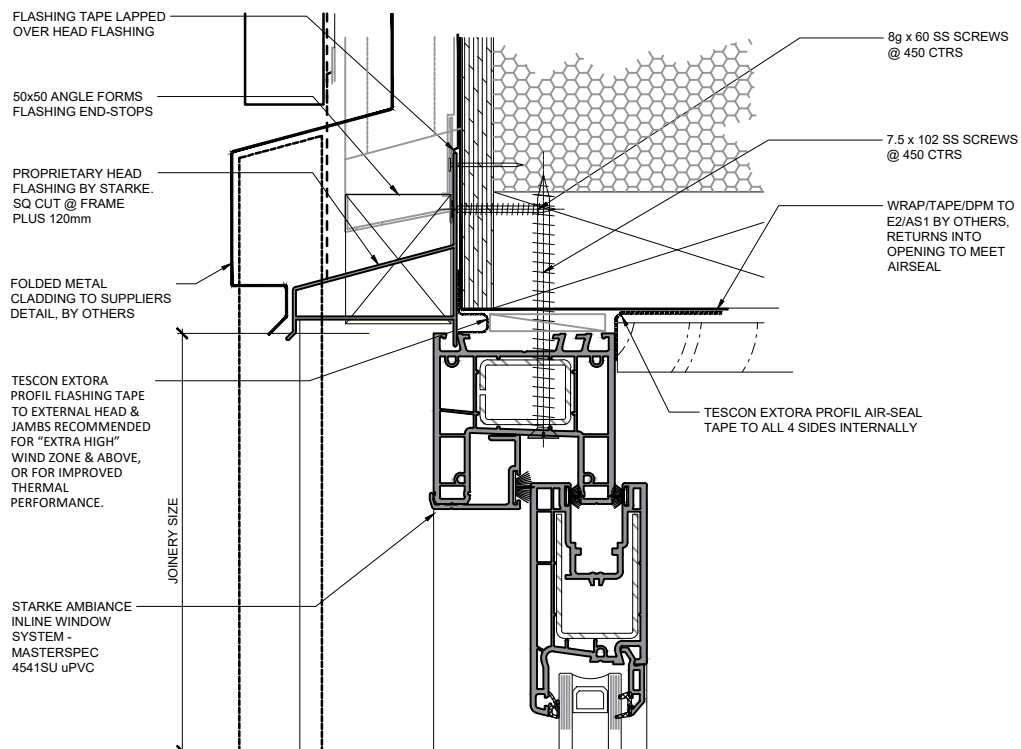
STARKE

SIPS / 45 Cavity / Metal Cladding

Sliding door

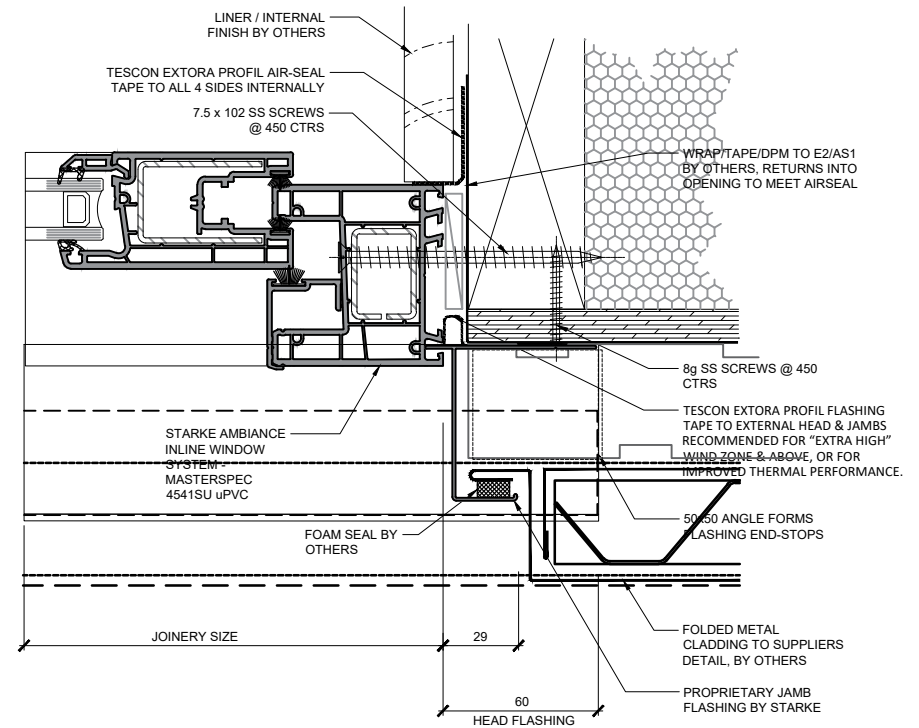
Timber mid-floor, Non-rebated

NO PEF ROD, FOAM OR WET
SEALANT REQUIRED.
AIR-TIGHTNESS IS PROVIDED BY
AIR-SEAL TAPE



IMPORTANT

IT IS CRITICAL THAT THE JOINERY SILL IS PACKED PERFECTLY LEVEL TO ENSURE THE CORRECT OPERATION OF ANY HIGH PERFORMANCE DOOR.



AMBIANCE

Inline Window Systems

STARKE

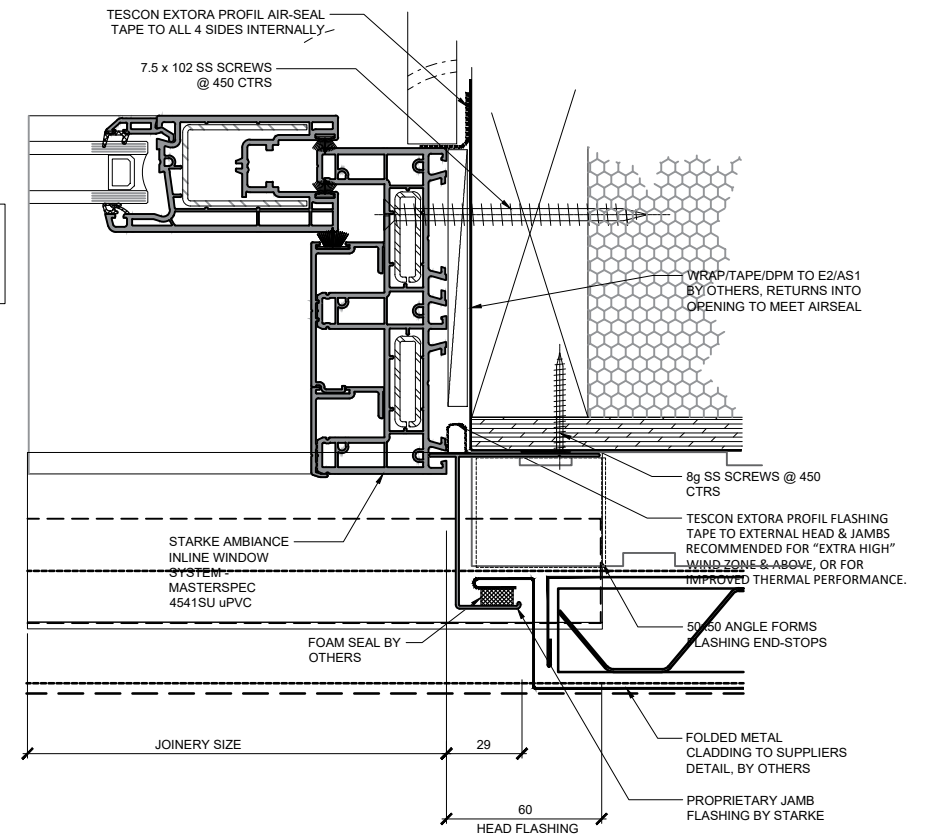
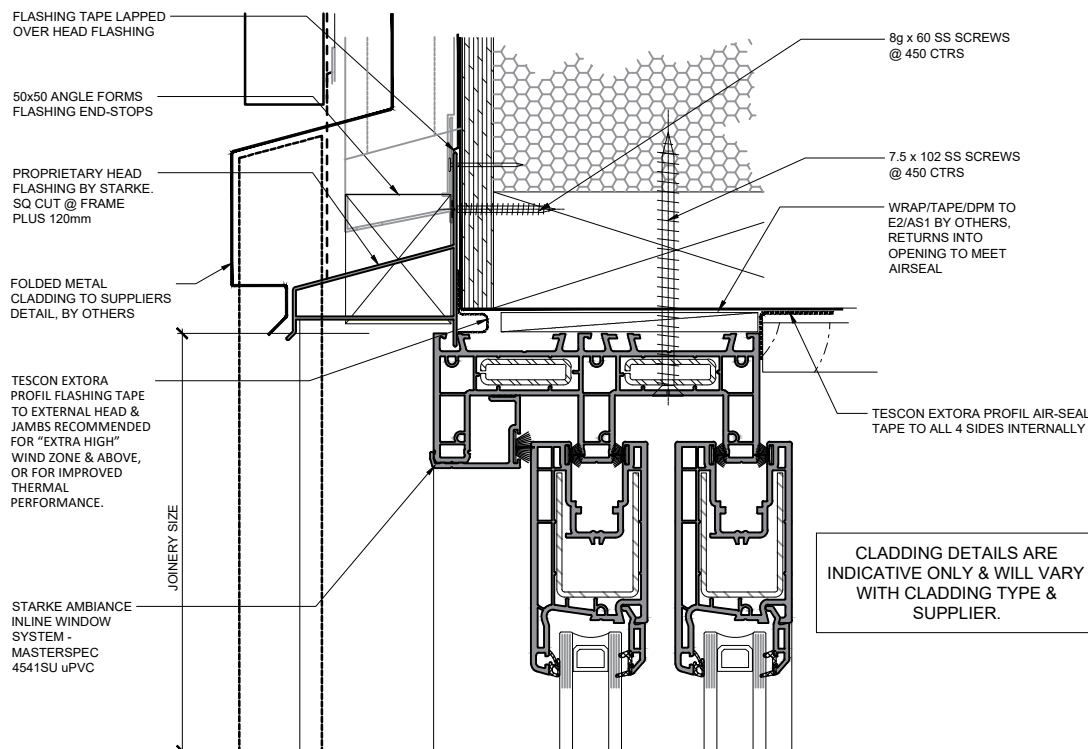
DISCLAIMER: THIS INFORMATION IS FOR GUIDANCE ONLY. STARKE GROUP LIMITED (TRADING AS STARKE) MAKES NO WARRANTY OR REPRESENTATION OF ANY KIND, EXPRESS OR IMPLIED, REGARDING THE COMPLETENESS, ACCURACY, RELIABILITY OR SUITABILITY OF THE PRODUCT SHOWN HEREIN. RELIANCE ON THIS INFORMATION IS AT THE CUSTOMER'S SOLE RISK. IT IS RECOMMENDED THAT THE CUSTOMER SEEKS PROFESSIONAL ADVICE ON THE SUITABILITY OF THE PRODUCT FOR SPECIFIC APPLICATIONS. FOR TECHNICAL INFORMATION ON THE PRODUCT, PLEASE CONTACT STARKE.

SIPS / 45 Cavity / Metal Cladding

Stacker Slider

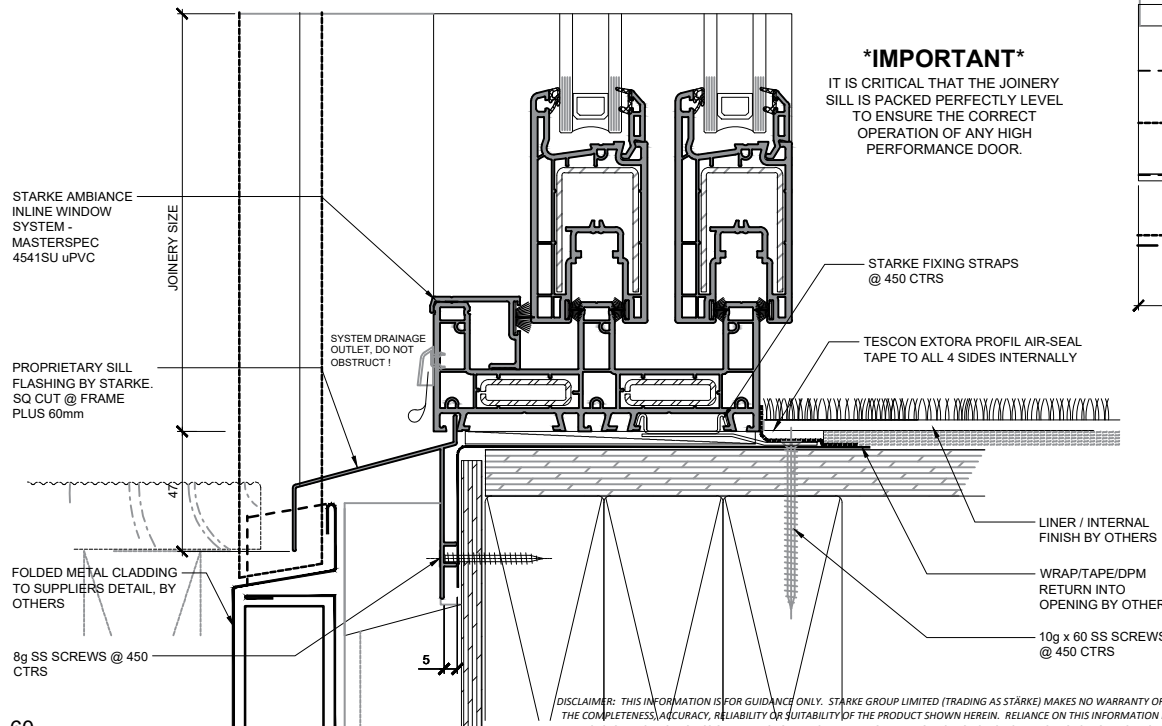
Timber mid-floor, Non-rebated

NO PEF ROD, FOAM OR WET SEALANT REQUIRED.
AIR-TIGHTNESS IS PROVIDED BY AIR-SEAL TAPE



IMPORTANT

IT IS CRITICAL THAT THE JOINERY SILL IS PACKED PERFECTLY LEVEL TO ENSURE THE CORRECT OPERATION OF ANY HIGH PERFORMANCE DOOR.



AMBIANCE

Inline Window Systems

STARKE

DISCLAIMER: THIS INFORMATION IS FOR GUIDANCE ONLY. STARKE GROUP LIMITED (TRADING AS STARKE) MAKES NO WARRANTY OR REPRESENTATION OF ANY KIND, EXPRESS OR IMPLIED, REGARDING THE COMPLETENESS, ACCURACY, RELIABILITY OR SUITABILITY OF THE PRODUCT SHOWN HEREIN. RELIANCE ON THIS INFORMATION IS AT THE CUSTOMER'S SOLE RISK. IT IS RECOMMENDED THAT THE CUSTOMER SEEKS PROFESSIONAL ADVICE ON THE SUITABILITY OF THE PRODUCT FOR SPECIFIC APPLICATIONS. FOR TECHNICAL INFORMATION ON THE PRODUCT, PLEASE CONTACT STARKE.

FLASHING TAPE LAPPED
OVER HEAD FLASHING

50x50 ANGLE FORMS
FLASHING END-STOPS

PROPRIETARY HEAD
FLASHING BY STARKE.
SQ CUT @ FRAME
PLUS 120mm

FOLDED METAL
CLADDING TO SUPPLIERS
DETAIL, BY OTHERS

TESCON EXTORA
PROFIL FLASHING TAPE
TO EXTERNAL HEAD &
JAMBS RECOMMENDED
FOR "EXTRA HIGH"
WIND ZONE & ABOVE,
OR FOR IMPROVED
THERMAL
PERFORMANCE.

STARKE AMBIANCE
INLINE WINDOW
SYSTEM -
MASTERSPEC
4541SU uPVC

JOINERY SIZE

8g x 60 SS SCREWS
@ 450 CTRS

10g x 60 SS SCREWS
@ 450 CTRS

WRAP/TAPE/DPM TO
E2/AS1 BY OTHERS,
RETURNS INTO
OPENING TO MEET
AIRSEAL

TESCON EXTORA PROFIL AIR-SEAL
TAPE TO ALL 4 SIDES INTERNALLY

STARKE FIXING STRAPS @ 450 CTRS

STARKE AMBIANCE
INLINE WINDOW
SYSTEM -
MASTERSPEC
4541SU uPVC

JOINERY SIZE

PROPRIETARY SILL
FLASHING BY STARKE.
SQ CUT @ FRAME
PLUS 60mm

FOLDED METAL CLADDING
TO SUPPLIERS DETAIL, BY
OTHERS

8g SS SCREWS @ 450
CTRS

5

DISCLAIMER: THIS INFORMATION IS FOR GUIDANCE ONLY. STARKE GROUP LIMITED (TRADING AS STÄRKE) MAKES NO WARRANTY OR REPRESENTATION OF ANY KIND, EXPRESS OR IMPLIED, REGARDING THE COMPLETENESS, ACCURACY, RELIABILITY OR SUITABILITY OF THE PRODUCT SHOWN HEREIN. RELIANCE ON THIS INFORMATION IS AT THE CUSTOMER'S SOLE RISK. IT IS RECOMMENDED THAT THE CUSTOMER SEEKS PROFESSIONAL ADVICE ON THE SUITABILITY OF THE PRODUCT FOR SPECIFIC APPLICATIONS. FOR TECHNICAL INFORMATION ON THE PRODUCT, PLEASE CONTACT STÄRKE.

SIPS / 45 Cavity / Metal Cladding

Hinged door Open out

Timber mid-floor, Non-rebated

NO PEF ROD, FOAM OR WET
SEALANT REQUIRED.
AIR-TIGHTNESS IS PROVIDED BY
AIR-SEAL TAPE

LINER / INTERNAL
FINISH BY OTHERS

TESCON EXTORA PROFIL AIR-SEAL
TAPE TO ALL 4 SIDES INTERNALLY

STARKE FIXING STRAPS @ 450 CTRS

WRAP/TAPE/DPM TO E2/AS1
BY OTHERS, RETURNS INTO
OPENING TO MEET AIRSEAL

8g SS SCREWS @ 450
CTRS

TESCON EXTORA PROFIL FLASHING
TAPE TO EXTERNAL HEAD & JAMBS
RECOMMENDED FOR "EXTRA HIGH"
WIND ZONE & ABOVE, OR FOR
IMPROVED THERMAL PERFORMANCE.

50x50 ANGLE FORMS
FLASHING END-STOPS

FOAM SEAL BY
OTHERS

FOLDED METAL
CLADDING TO SUPPLIERS
DETAIL, BY OTHERS

PROPRIETARY JAMB
FLASHING BY STARKE

JOINERY SIZE

29

60

HEAD FLASHING

CLADDING DETAILS ARE
INDICATIVE ONLY & WILL VARY
WITH CLADDING TYPE &
SUPPLIER.

AMBIANCE[®]

Inline Window Systems

STÄRKE

FLASHING TAPE LAPPED
OVER HEAD FLASHING

50x50 ANGLE FORMS
FLASHING END-STOPS

PROPRIETARY HEAD
FLASHING BY STARKE.
SQ CUT @ FRAME
PLUS 120mm

FOLDED METAL
CLADDING TO SUPPLIERS
DETAIL, BY OTHERS

TESCON EXTORA
PROFIL FLASHING TAPE
TO EXTERNAL HEAD &
JAMBS RECOMMENDED
FOR "EXTRA HIGH"
WIND ZONE & ABOVE,
OR FOR IMPROVED
THERMAL
PERFORMANCE.

STARKE AMBIANCE
INLINE WINDOW
SYSTEM -
MASTERSPEC
4541SU uPVC

JOINERY SIZE

8g x 60 SS SCREWS
@ 450 CTRS

10g x 60 SS SCREWS
@ 450 CTRS

WRAP/TAPE/DPM TO
E2/AS1 BY OTHERS,
RETURNS INTO
OPENING TO MEET
AIRSEAL

TESCON EXTORA PROFIL AIR-SEAL
TAPE TO ALL 4 SIDES INTERNALLY

STARKE FIXING STRAPS @ 450 CTRS

STARKE AMBIANCE
INLINE WINDOW
SYSTEM -
MASTERSPEC
4541SU uPVC

JOINERY SIZE

STARKE FIXING STRAPS
@ 450 CTRS

TESCON EXTORA PROFIL AIR-SEAL
TAPE TO ALL 4 SIDES INTERNALLY

PROPRIETARY SILL
FLASHING BY STARKE.
SQ CUT @ FRAME
PLUS 60mm

FOLDED METAL CLADDING
TO SUPPLIERS DETAIL, BY
OTHERS

8g SS SCREWS @ 450
CTRS

5

LINER / INTERNAL
FINISH BY OTHERS

WRAP/TAPE/DPM
RETURN INTO
OPENING BY OTHERS

10g x 60 SS SCREWS
@ 450 CTRS

DISCLAIMER: THIS INFORMATION IS FOR GUIDANCE ONLY. STARKE GROUP LIMITED (TRADING AS STÄRKE) MAKES NO WARRANTY OR REPRESENTATION OF ANY KIND, EXPRESS OR IMPLIED, REGARDING THE COMPLETENESS, ACCURACY, RELIABILITY OR SUITABILITY OF THE PRODUCT SHOWN HEREIN. RELIANCE ON THIS INFORMATION IS AT THE CUSTOMER'S SOLE RISK. IT IS RECOMMENDED THAT THE CUSTOMER SEEKS PROFESSIONAL ADVICE ON THE SUITABILITY OF THE PRODUCT FOR SPECIFIC APPLICATIONS. FOR TECHNICAL INFORMATION ON THE PRODUCT, PLEASE CONTACT STÄRKE.

SIPS / 45 Cavity / Metal Cladding

Hinged door Open in

Timber mid-floor, Non-rebated

NO PEF ROD, FOAM OR WET
SEALANT REQUIRED.
AIR-TIGHTNESS IS PROVIDED BY
AIR-SEAL TAPE

LINER / INTERNAL
FINISH BY OTHERS

TESCON EXTORA PROFIL AIR-SEAL
TAPE TO ALL 4 SIDES INTERNALLY

STARKE FIXING STRAPS @ 450 CTRS

WRAP/TAPE/DPM TO E2/AS1
BY OTHERS, RETURNS INTO
OPENING TO MEET AIRSEAL

8g SS SCREWS @ 450
CTRS

STARKE AMBIANCE
INLINE WINDOW
SYSTEM -
MASTERSPEC
4541SU uPVC

TESCON EXTORA PROFIL FLASHING
TAPE TO EXTERNAL HEAD & JAMBS
RECOMMENDED FOR "EXTRA HIGH"
WIND ZONE & ABOVE, OR FOR
IMPROVED THERMAL PERFORMANCE.

FOAM SEAL BY
OTHERS

50x50 ANGLE FORMS
FLASHING END-STOPS

FOLDED METAL
CLADDING TO SUPPLIERS
DETAIL, BY OTHERS

PROPRIETARY JAMB
FLASHING BY STARKE

CLADDING DETAILS ARE
INDICATIVE ONLY & WILL VARY
WITH CLADDING TYPE &
SUPPLIER.

JOINERY SIZE

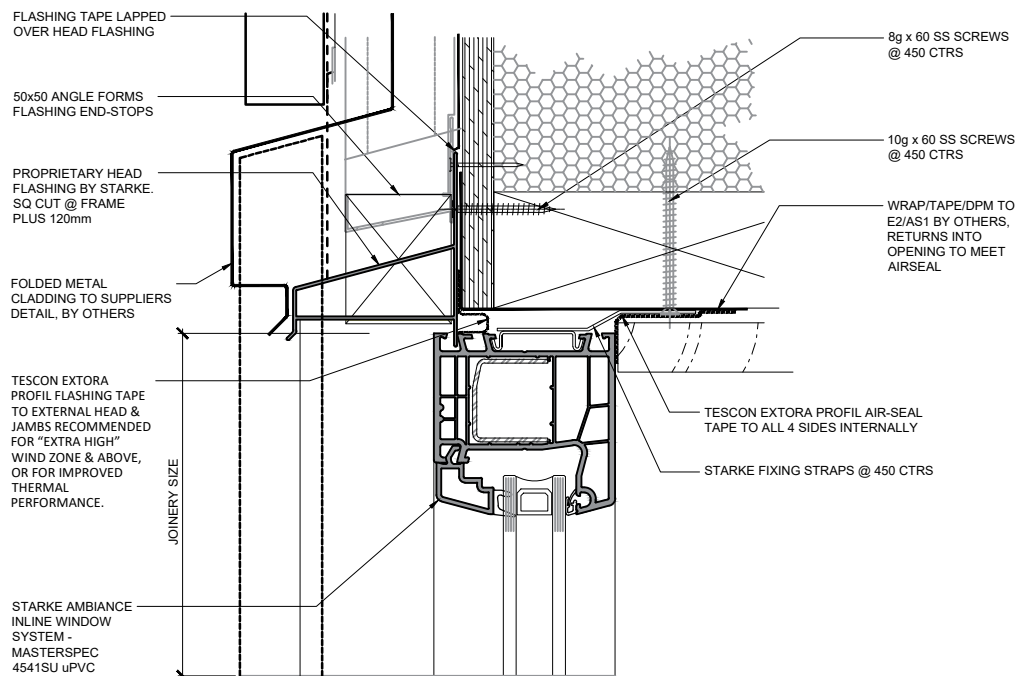
29

60
HEAD FLASHING

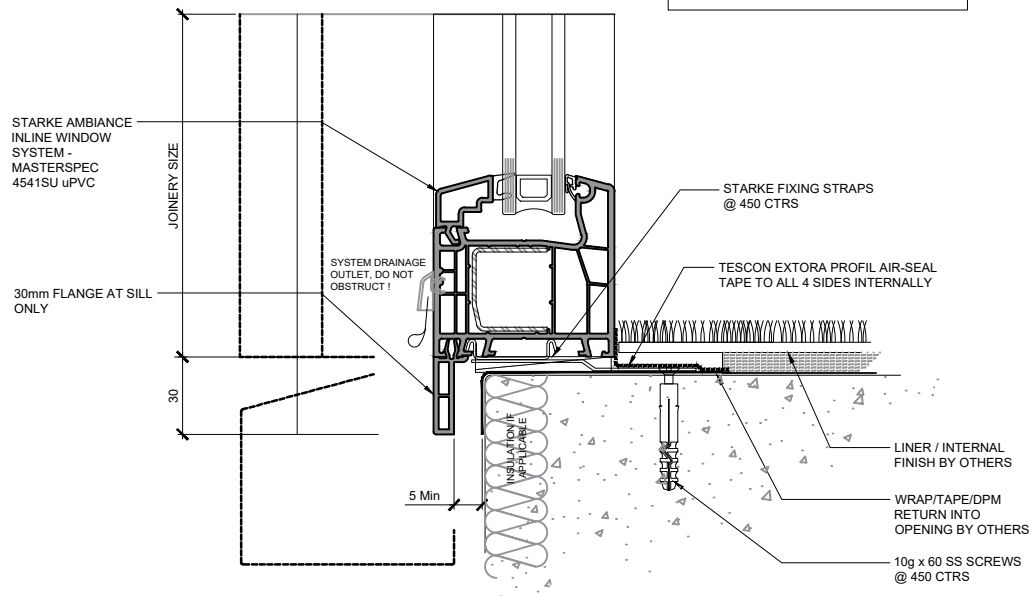
AMBIANCE[®]

Inline Window Systems

STÄRKE

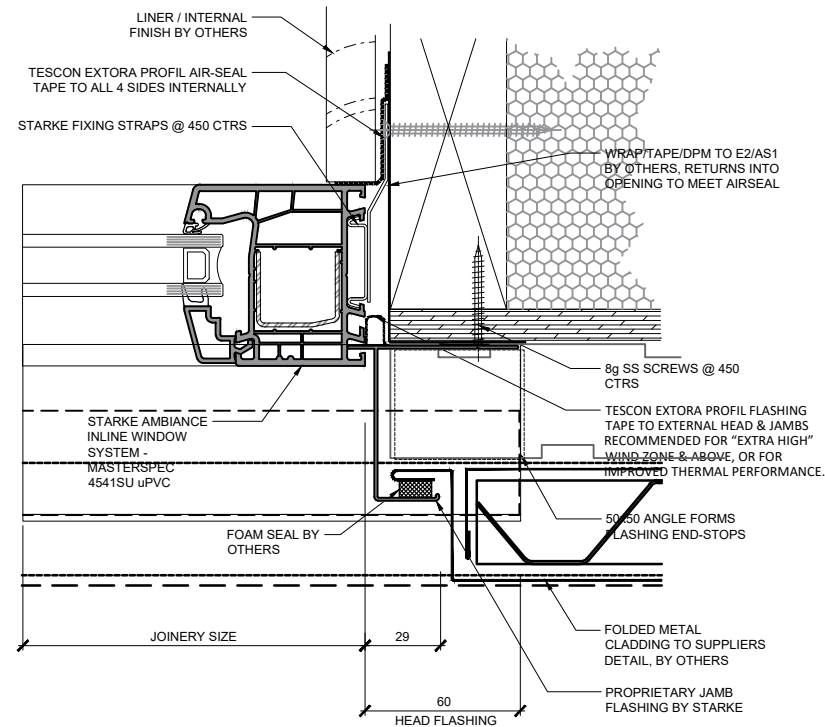


CLADDING DETAILS ARE INDICATIVE ONLY & WILL VARY WITH CLADDING TYPE & SUPPLIER.



SIPS / 45 Cavity / Metal Cladding
Fixed Lite
Concrete ground floor, Non-rebated

NO PEF ROD, FOAM OR WET SEALANT REQUIRED. AIR-TIGHTNESS IS PROVIDED BY AIR-SEAL TAPE

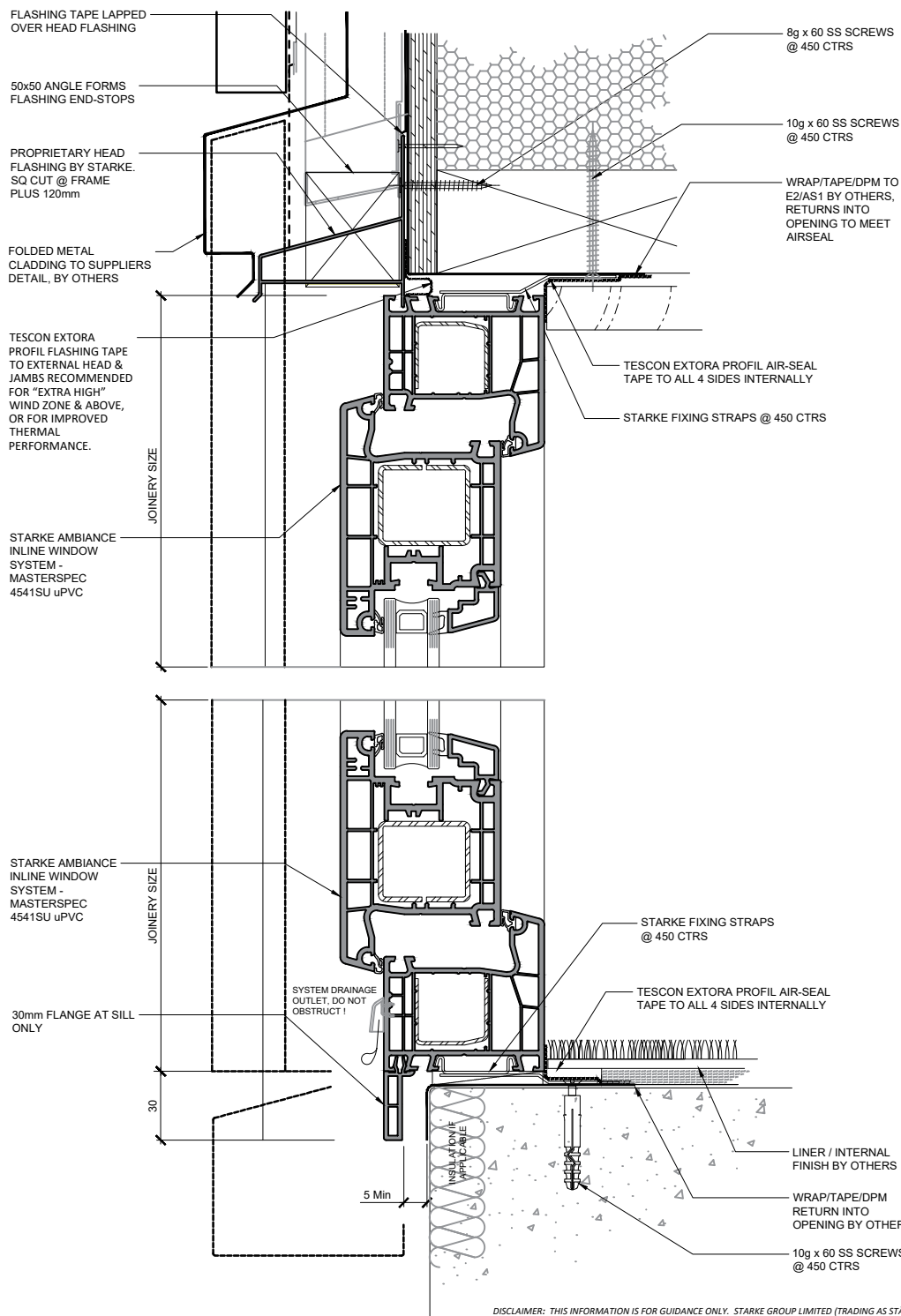


AMBIANCE[®]

Inline Window Systems

STARKE

DISCLAIMER: THIS INFORMATION IS FOR GUIDANCE ONLY. STARKE GROUP LIMITED (TRADING AS STARKE) MAKES NO WARRANTY OR REPRESENTATION OF ANY KIND, EXPRESS OR IMPLIED, REGARDING THE COMPLETENESS, ACCURACY, RELIABILITY OR SUITABILITY OF THE PRODUCT SHOWN HEREIN. RELIANCE ON THIS INFORMATION IS AT THE CUSTOMER'S SOLE RISK. IT IS RECOMMENDED THAT THE CUSTOMER SEEKS PROFESSIONAL ADVICE ON THE SUITABILITY OF THE PRODUCT FOR SPECIFIC APPLICATIONS. FOR TECHNICAL INFORMATION ON THE PRODUCT, PLEASE CONTACT STARKE.

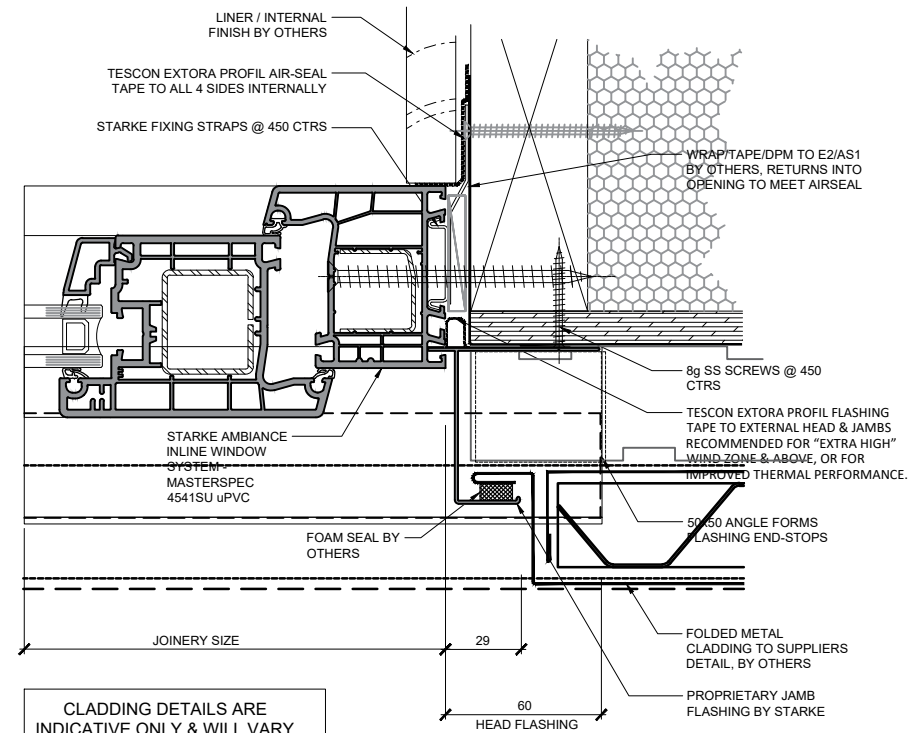


SIPS / 45 Cavity / Metal Cladding

Hinged door Open out

Concrete ground floor, Non-rebated

NO PEF ROD, FOAM OR WET SEALANT REQUIRED.
AIR-TIGHTNESS IS PROVIDED BY AIR-SEAL TAPE



CLADDING DETAILS ARE INDICATIVE ONLY & WILL VARY WITH CLADDING TYPE & SUPPLIER.

AMBIANCE™

Inline Window Systems

STARKE

FLASHING TAPE LAPPED
OVER HEAD FLASHING

50x50 ANGLE FORMS
FLASHING END-STOPS

PROPRIETARY HEAD
FLASHING BY STARKE.
SQ CUT @ FRAME
PLUS 120mm

FOLDED METAL
CLADDING TO SUPPLIERS
DETAIL, BY OTHERS

TESCON EXTORA
PROFIL FLASHING TAPE
TO EXTERNAL HEAD &
JAMBS RECOMMENDED
FOR "EXTRA HIGH"
WIND ZONE & ABOVE,
OR FOR IMPROVED
THERMAL
PERFORMANCE.

STARKE AMBIANCE
INLINE WINDOW
SYSTEM -
MASTERSPEC
4541SU uPVC

JOINERY SIZE

STARKE AMBIANCE
INLINE WINDOW
SYSTEM -
MASTERSPEC
4541SU uPVC

JOINERY SIZE

30mm FLANGE AT SILL
ONLY

30

5 Min

SYSTEM DRAINAGE
OUTLET, DO NOT
OBSTRUCT !

TESCON EXTORA PROFIL AIR-SEAL
TAPE TO ALL 4 SIDES INTERNALLY

STARKE FIXING STRAPS @ 450 CTRS

STARKE FIXING STRAPS
@ 450 CTRS

TESCON EXTORA PROFIL AIR-SEAL
TAPE TO ALL 4 SIDES INTERNALLY

8g x 60 SS SCREWS
@ 450 CTRS

10g x 60 SS SCREWS
@ 450 CTRS

WRAP/TAPE/DPM TO
E2/AS1 BY OTHERS,
RETURNS INTO
OPENING TO MEET
AIRSEAL

LINER / INTERNAL
FINISH BY OTHERS

WRAP/TAPE/DPM
RETURN INTO
OPENING BY OTHERS

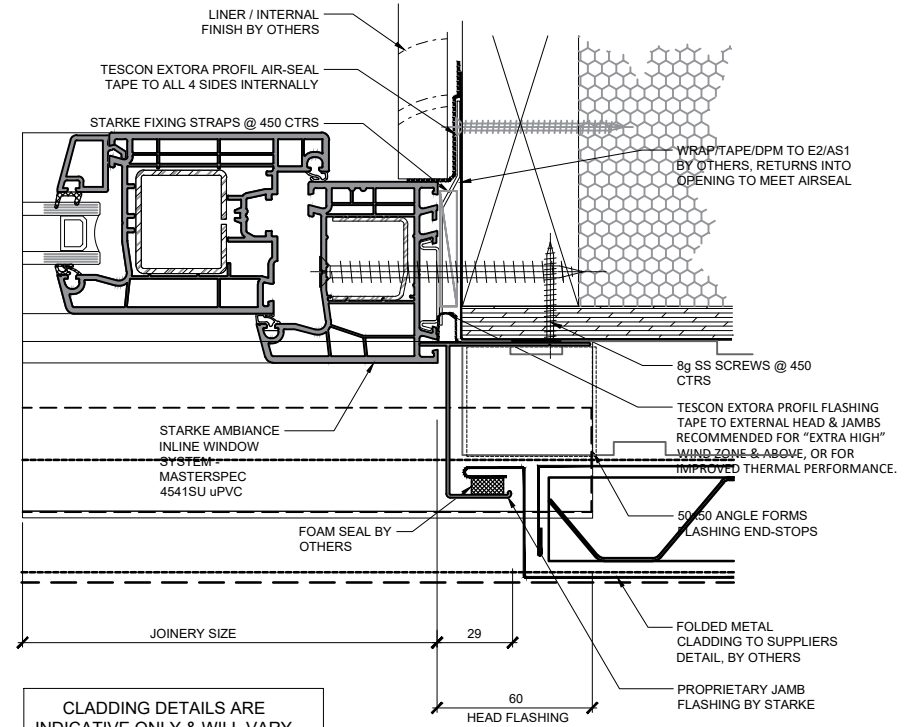
10g x 60 SS SCREWS
@ 450 CTRS

SIPS / 45 Cavity / Metal Cladding

Hinged door Open in

Concrete ground floor, Non-rebated

NO PEF ROD, FOAM OR WET
SEALANT REQUIRED.
AIR-TIGHTNESS IS PROVIDED BY
AIR-SEAL TAPE



CLADDING DETAILS ARE
INDICATIVE ONLY & WILL VARY
WITH CLADDING TYPE &
SUPPLIER.

AMBIANCE

Inline Window Systems

STARKE

FLASHING TAPE LAPPED
OVER HEAD FLASHING

50x50 ANGLE FORMS
FLASHING END-STOPS

PROPRIETARY HEAD
FLASHING BY STARKE.
SQ CUT @ FRAME
PLUS 120mm

FOLDED METAL
CLADDING TO SUPPLIERS
DETAIL, BY OTHERS

TESCON EXTORA
PROFIL FLASHING TAPE
TO EXTERNAL HEAD &
JAMBS RECOMMENDED
FOR "EXTRA HIGH"
WIND ZONE & ABOVE,
OR FOR IMPROVED
THERMAL
PERFORMANCE.

STARKE AMBIANCE
INLINE WINDOW
SYSTEM -
MASTERSPEC
4541SU uPVC

JOINERY SIZE

STARKE AMBIANCE
INLINE WINDOW
SYSTEM -
MASTERSPEC
4541SU uPVC

JOINERY SIZE

30mm FLANGE AT SILL
ONLY

30

SYSTEM DRAINAGE
OUTLET, DO NOT
OBSTRUCT!

5 Min

IMPORTANT

IT IS CRITICAL THAT THE JOINERY
SILL IS PACKED PERFECTLY LEVEL
TO ENSURE THE CORRECT
OPERATION OF ANY HIGH
PERFORMANCE DOOR.

STARKE FIXING STRAPS
@ 450 CTRS

TESCON EXTORA PROFIL AIR-SEAL
TAPE TO ALL 4 SIDES INTERNALLY

LINER / INTERNAL
FINISH BY OTHERS

WRAP/TAPE/DPM
RETURN INTO
OPENING BY OTHERS

10g x 60 SS SCREWS
@ 450 CTRS

8g x 60 SS SCREWS
@ 450 CTRS

7.5 x 102 SS SCREWS
@ 450 CTRS

WRAP/TAPE/DPM TO
E2/AS1 BY OTHERS,
RETURNS INTO
OPENING TO MEET
AIRSEAL

TESCON EXTORA PROFIL AIR-SEAL
TAPE TO ALL 4 SIDES INTERNALLY

SIPS / 45 Cavity / Metal Cladding

Sliding door

Concrete ground floor, Non-rebated

NO PEF ROD, FOAM OR WET
SEALANT REQUIRED.
AIR-TIGHTNESS IS PROVIDED BY
AIR-SEAL TAPE

LINER / INTERNAL
FINISH BY OTHERS

TESCON EXTORA PROFIL AIR-SEAL
TAPE TO ALL 4 SIDES INTERNALLY

7.5 x 102 SS SCREWS
@ 450 CTRS

WRAP/TAPE/DPM TO E2/AS1
BY OTHERS, RETURNS INTO
OPENING TO MEET AIRSEAL

8g SS SCREWS @ 450
CTRS

STARKE AMBIANCE
INLINE WINDOW
SYSTEM -
MASTERSPEC
4541SU uPVC

TESCON EXTORA PROFIL FLASHING
TAPE TO EXTERNAL HEAD & JAMBS
RECOMMENDED FOR "EXTRA HIGH"
WIND ZONE & ABOVE, OR FOR
IMPROVED THERMAL PERFORMANCE.

FOAM SEAL BY
OTHERS

50x50 ANGLE FORMS
FLASHING END-STOPS

FOLDED METAL
CLADDING TO SUPPLIERS
DETAIL, BY OTHERS

PROPRIETARY JAMB
FLASHING BY STARKE

JOINERY SIZE

29

60
HEAD FLASHING

CLADDING DETAILS ARE
INDICATIVE ONLY & WILL VARY
WITH CLADDING TYPE &
SUPPLIER.

AMBIANCE

Inline Window Systems

STARKE

DISCLAIMER: THIS INFORMATION IS FOR GUIDANCE ONLY. STARKE GROUP LIMITED (TRADING AS STARKE) MAKES NO WARRANTY OR REPRESENTATION OF ANY KIND, EXPRESS OR IMPLIED, REGARDING THE COMPLETENESS, ACCURACY, RELIABILITY OR SUITABILITY OF THE PRODUCT SHOWN HEREIN. RELIANCE ON THIS INFORMATION IS AT THE CUSTOMER'S SOLE RISK. IT IS RECOMMENDED THAT THE CUSTOMER SEEKS PROFESSIONAL ADVICE ON THE SUITABILITY OF THE PRODUCT FOR SPECIFIC APPLICATIONS. FOR TECHNICAL INFORMATION ON THE PRODUCT, PLEASE CONTACT STARKE.

FLASHING TAPE LAPPED
OVER HEAD FLASHING

50x50 ANGLE FORMS
FLASHING END-STOPS

PROPRIETARY HEAD
FLASHING BY STARKE.
SO CUT @ FRAME
PLUS 120mm

FOLDED METAL
CLADDING TO SUPPLIERS
DETAIL, BY OTHERS

TESCON EXTORA
PROFIL FLASHING TAPE
TO EXTERNAL HEAD &
JAMBS RECOMMENDED
FOR "EXTRA HIGH"
WIND ZONE & ABOVE,
OR FOR IMPROVED
THERMAL
PERFORMANCE.

STARKE AMBIANCE
INLINE WINDOW
SYSTEM -
MASTERSPEC
4541SU uPVC

JOINERY SIZE

STARKE AMBIANCE
INLINE WINDOW
SYSTEM -
MASTERSPEC
4541SU uPVC

JOINERY SIZE

30mm FLANGE AT SILL
ONLY

30

SYSTEM DRAINAGE
OUTLET, DO NOT
OBSTRUCT!

5 Min

8g x 60 SS SCREWS
@ 450 CTRS

7.5 x 102 SS SCREWS
@ 450 CTRS

WRAP/TAPE/DPM TO
E2/AS1 BY OTHERS,
RETURNS INTO
OPENING TO MEET
AIRSEAL

TESCON EXTORA PROFIL AIR-SEAL
TAPE TO ALL 4 SIDES INTERNALLY

STARKE FIXING STRAPS
@ 450 CTRS

TESCON EXTORA PROFIL AIR-SEAL
TAPE TO ALL 4 SIDES INTERNALLY

LINER / INTERNAL
FINISH BY OTHERS

WRAP/TAPE/DPM
RETURN INTO
OPENING BY OTHERS

10g x 60 SS SCREWS
@ 450 CTRS

SIPS / 45 Cavity / Metal Cladding

Stacker Slider

Concrete ground floor, Non-rebated

NO PEF ROD, FOAM OR WET
SEALANT REQUIRED.
AIR-TIGHTNESS IS PROVIDED BY
AIR-SEAL TAPE

TESCON EXTORA PROFIL AIR-SEAL
TAPE TO ALL 4 SIDES INTERNALLY

7.5 x 102 SS SCREWS
@ 450 CTRS

WRAP/TAPE/DPM TO E2/AS1
BY OTHERS, RETURNS INTO
OPENING TO MEET AIRSEAL

8g SS SCREWS @ 450
CTRS

TESCON EXTORA PROFIL FLASHING
TAPE TO EXTERNAL HEAD & JAMBS
RECOMMENDED FOR "EXTRA HIGH"
WIND ZONE & ABOVE, OR FOR
IMPROVED THERMAL PERFORMANCE.

50x50 ANGLE FORMS
FLASHING END-STOPS

STARKE AMBIANCE
INLINE WINDOW
SYSTEM -
MASTERSPEC
4541SU uPVC

FOAM SEAL BY
OTHERS

JOINERY SIZE

29

60
HEAD FLASHING

FOLDED METAL
CLADDING TO SUPPLIERS
DETAIL, BY OTHERS

PROPRIETARY JAMB
FLASHING BY STARKE

CLADDING DETAILS ARE
INDICATIVE ONLY & WILL VARY
WITH CLADDING TYPE &
SUPPLIER.

AMBIANCE

Inline Window Systems

STARKE

IMPORTANT

IT IS CRITICAL THAT THE JOINERY
SILL IS PACKED PERFECTLY LEVEL
TO ENSURE THE CORRECT
OPERATION OF ANY HIGH
PERFORMANCE DOOR.

DISCLAIMER: THIS INFORMATION IS FOR GUIDANCE ONLY. STARKE GROUP LIMITED (TRADING AS STARKE) MAKES NO WARRANTY OR REPRESENTATION OF ANY KIND, EXPRESS OR IMPLIED, REGARDING THE COMPLETENESS, ACCURACY, RELIABILITY OR SUITABILITY OF THE PRODUCT SHOWN HEREIN. RELIANCE ON THIS INFORMATION IS AT THE CUSTOMER'S SOLE RISK. IT IS RECOMMENDED THAT THE CUSTOMER SEEKS PROFESSIONAL ADVICE ON THE SUITABILITY OF THE PRODUCT FOR SPECIFIC APPLICATIONS. FOR TECHNICAL INFORMATION ON THE PRODUCT, PLEASE CONTACT STARKE.

FLASHING TAPE LAPPED
OVER HEAD FLASHING

50x50 ANGLE FORMS
FLASHING END-STOPS

PROPRIETARY HEAD
FLASHING BY STARKE.
SQ CUT @ FRAME
PLUS 120mm

FOLDED METAL
CLADDING TO SUPPLIERS
DETAIL, BY OTHERS

TESCON EXTORA
PROFIL FLASHING TAPE
TO EXTERNAL HEAD &
JAMBS RECOMMENDED
FOR "EXTRA HIGH"
WIND ZONE & ABOVE,
OR FOR IMPROVED
THERMAL
PERFORMANCE.

STARKE AMBIANCE
INLINE WINDOW
SYSTEM -
MASTERSPEC
4541SU uPVC

JOINERY SIZE

STARKE AMBIANCE
INLINE WINDOW
SYSTEM -
MASTERSPEC
4541SU uPVC

JOINERY SIZE

30mm FLANGE AT SILL
ONLY

35

30

5 Min

8g x 60 SS SCREWS
@ 450 CTRS

10g x 60 SS SCREWS
@ 450 CTRS

WRAP/TAPE/DPM TO
E2/AS1 BY OTHERS,
RETURNS INTO
OPENING TO MEET
AIRSEAL

TESCON EXTORA PROFIL AIR-SEAL
TAPE TO ALL 4 SIDES INTERNALLY

STARKE FIXING STRAPS @ 450 CTRS

STARKE FIXING STRAPS
@ 450 CTRS

TESCON EXTORA PROFIL AIR-SEAL
TAPE TO ALL 4 SIDES INTERNALLY

LINER / INTERNAL
FINISH BY OTHERS

FLASHING TAPE/DPM
RETURN INTO
OPENING BY OTHERS

10g x 60 SS SCREWS
@ 450 CTRS

SIPS / 45 Cavity / Metal Cladding

Hinged door Open out

Concrete ground floor, Non-rebated

NO PEF ROD, FOAM OR WET
SEALANT REQUIRED.
AIR-TIGHTNESS IS PROVIDED BY
AIR-SEAL TAPE

LINER / INTERNAL
FINISH BY OTHERS

TESCON EXTORA PROFIL AIR-SEAL
TAPE TO ALL 4 SIDES INTERNALLY

STARKE FIXING STRAPS @ 450 CTRS

WRAP/TAPE/DPM TO E2/AS1
BY OTHERS, RETURNS INTO
OPENING TO MEET AIRSEAL

8g SS SCREWS @ 450
CTRS

TESCON EXTORA PROFIL FLASHING
TAPE TO EXTERNAL HEAD & JAMBS
RECOMMENDED FOR "EXTRA HIGH"
WIND ZONE & ABOVE, OR FOR
IMPROVED THERMAL PERFORMANCE.

50x50 ANGLE FORMS
FLASHING END-STOPS

FOAM SEAL BY
OTHERS

FOLDED METAL
CLADDING TO SUPPLIERS
DETAIL, BY OTHERS

PROPRIETARY JAMB
FLASHING BY STARKE

JOINERY SIZE

29

60
HEAD FLASHING

CLADDING DETAILS ARE
INDICATIVE ONLY & WILL VARY
WITH CLADDING TYPE &
SUPPLIER.

AMBIANCE

Inline Window Systems

STARKE

DISCLAIMER: THIS INFORMATION IS FOR GUIDANCE ONLY. STARKE GROUP LIMITED (TRADING AS STARKE) MAKES NO WARRANTY OR REPRESENTATION OF ANY KIND, EXPRESS OR IMPLIED, REGARDING THE COMPLETENESS, ACCURACY, RELIABILITY OR SUITABILITY OF THE PRODUCT SHOWN HEREIN. RELIANCE ON THIS INFORMATION IS AT THE CUSTOMER'S SOLE RISK. IT IS RECOMMENDED THAT THE CUSTOMER SEEKS PROFESSIONAL ADVICE ON THE SUITABILITY OF THE PRODUCT FOR SPECIFIC APPLICATIONS. FOR TECHNICAL INFORMATION ON THE PRODUCT, PLEASE CONTACT STARKE.

FLASHING TAPE LAPPED
OVER HEAD FLASHING

50x50 ANGLE FORMS
FLASHING END-STOPS

PROPRIETARY HEAD
FLASHING BY STARKE.
SQ CUT @ FRAME
PLUS 120mm

FOLDED METAL
CLADDING TO SUPPLIERS
DETAIL, BY OTHERS

TESCON EXTORA
PROFIL FLASHING TAPE
TO EXTERNAL HEAD &
JAMBS RECOMMENDED
FOR "EXTRA HIGH"
WIND ZONE & ABOVE,
OR FOR IMPROVED
THERMAL
PERFORMANCE.

STARKE AMBIANCE
INLINE WINDOW
SYSTEM -
MASTERSPEC
4541SU uPVC

JOINERY SIZE

8g x 60 SS SCREWS
@ 450 CTRS

10g x 60 SS SCREWS
@ 450 CTRS

WRAP/TAPE/DPM TO
E2/AS1 BY OTHERS,
RETURNS INTO
OPENING TO MEET
AIRSEAL

TESCON EXTORA PROFIL AIR-SEAL
TAPE TO ALL 4 SIDES INTERNALLY

STARKE FIXING STRAPS @ 450 CTRS

STARKE AMBIANCE
INLINE WINDOW
SYSTEM -
MASTERSPEC
4541SU uPVC

JOINERY SIZE

30mm FLANGE AT SILL
ONLY

30

5 Min

STARKE FIXING STRAPS
@ 450 CTRS

TESCON EXTORA PROFIL AIR-SEAL
TAPE TO ALL 4 SIDES INTERNALLY

10 Min

23 MAX !

INTERNAL FINISH
BY OTHERS

WRAP/TAPE/DPM
RETURN INTO
OPENING BY OTHERS

10g x 60 SS SCREWS
@ 450 CTRS

SIPS / 45 Cavity / Metal Cladding

Hinged door Open in

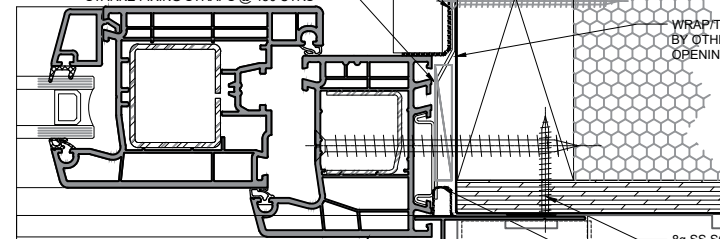
Concrete ground floor, Non-rebated

NO PEF ROD, FOAM OR WET
SEALANT REQUIRED.
AIR-TIGHTNESS IS PROVIDED BY
AIR-SEAL TAPE

LINER / INTERNAL
FINISH BY OTHERS

TESCON EXTORA PROFIL AIR-SEAL
TAPE TO ALL 4 SIDES INTERNALLY

STARKE FIXING STRAPS @ 450 CTRS



WRAP/TAPE/DPM TO E2/AS1
BY OTHERS, RETURNS INTO
OPENING TO MEET AIRSEAL

8g SS SCREWS @ 450
CTRS

STARKE AMBIANCE
INLINE WINDOW
SYSTEM -
MASTERSPEC
4541SU uPVC

TESCON EXTORA PROFIL FLASHING
TAPE TO EXTERNAL HEAD & JAMBS
RECOMMENDED FOR "EXTRA HIGH"
WIND ZONE & ABOVE, OR FOR
IMPROVED THERMAL PERFORMANCE.

FOAM SEAL BY
OTHERS

50x50 ANGLE FORMS
FLASHING END-STOPS

FOLDED METAL
CLADDING TO SUPPLIERS
DETAIL, BY OTHERS

PROPRIETARY JAMB
FLASHING BY STARKE

CLADDING DETAILS ARE
INDICATIVE ONLY & WILL VARY
WITH CLADDING TYPE &
SUPPLIER.

JOINERY SIZE

29

60
HEAD FLASHING

AMBIANCE

Inline Window Systems

STARKE

DISCLAIMER: THIS INFORMATION IS FOR GUIDANCE ONLY. STARKE GROUP LIMITED (TRADING AS STARKE) MAKES NO WARRANTY OR REPRESENTATION OF ANY KIND, EXPRESS OR IMPLIED, REGARDING THE COMPLETENESS, ACCURACY, RELIABILITY OR SUITABILITY OF THE PRODUCT SHOWN HEREIN. RELIANCE ON THIS INFORMATION IS AT THE CUSTOMER'S SOLE RISK. IT IS RECOMMENDED THAT THE CUSTOMER SEEKS PROFESSIONAL ADVICE ON THE SUITABILITY OF THE PRODUCT FOR SPECIFIC APPLICATIONS. FOR TECHNICAL INFORMATION ON THE PRODUCT, PLEASE CONTACT STARKE.