

**SIPS WALL FRAMING**  
**45mm CAVITY**  
**9mm SHEET CLADDING**

# AMBIANCE™

Inline Window Systems

**STÄRKE**

F1	FLASHINGS
A1-G-60	FIXED-LITE WINDOW
A2-G-60	AWNING OPEN OUT WINDOW
A3-G-60	OPEN-IN / TILT & TURN WINDOW
A4-G-60	SLIDING WINDOW
B1-G-60	TIMBER FLOOR NON REBATED - FULL HEIGHT FIXED-LITE
B2-G-60	TIMBER FLOOR NON REBATED - HINGED DOOR OPEN OUT
B3-G-60	TIMBER FLOOR NON REBATED - HINGED DOOR OPEN IN
B4-G-60	TIMBER FLOOR NON REBATED - SLIDING DOOR
B5-G-60	TIMBER FLOOR NON REBATED - STACKER DOOR
B6-G-60	TIMBER FLOOR NON REBATED - LOW PROFILE HINGED DOOR OPEN OUT
B7-G-60	TIMBER FLOOR NON REBATED - LOW PROFILE HINGED DOOR OPEN IN
E1-G-60	CONCRETE GND FLOOR NON REBATED - FULL HEIGHT FIXED-LITE
E2-G-60	CONCRETE GND FLOOR NON REBATED - HINGED DOOR OPEN OUT
E3-G-60	CONCRETE GND FLOOR NON REBATED - HINGED DOOR OPEN IN
E4-G-60	CONCRETE GND FLOOR NON REBATED - SLIDING DOOR
E5-G-60	CONCRETE GND FLOOR NON REBATED - STACKER DOOR
E6-G-60	CONCRETE GND FLOOR NON REBATED - LOW PROFILE HINGED DOOR OPEN OUT
E7-G-60	CONCRETE GND FLOOR NON REBATED - LOW PROFILE HINGED DOOR OPEN IN



interactive assembly  
instructions available

<http://wksp.nz/sg-wfl-w70>

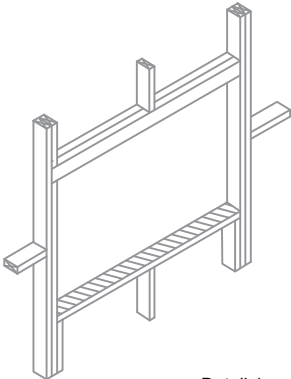
# Opening Preparation

The preparation of the wall opening prior to the installation of the window or door is essentially the same regardless of cladding option. The following offers a step by step guide to the process.

## Step P1 – Preliminary Check

Before proceeding with the installation and preparation of the wall underlay, the installer should examine and confirm that the sill trimmer is essentially level, straight and free of twist. It is particularly important that it is well secured and does not slope toward the interior of the building. If necessary, the sill trimmer should be planed to ensure it does not exhibit any of the above conditions.

The sill trimmer must be designed to comply with NZS3604.



Detail 1

Note: Projects within the new Extra High wind zone require the use of a Rigid Underlay in addition to and underneath a flexible wall underlay, except as noted in the attached comment.

This needs to be considered when sizing the windows.

**9.1.7.2** Rigid *wall underlays*, in association with *drained cavities* (including *direct fixed* corrugated profile metal) are required in Extra High *wind zones*. Refer to Table 3 and Table 23. Rigid *underlays* are also required to *external walls* of attached garages that are unlined. Refer Paragraphs 1.1.1 & 9.1.3.4 c).

Rigid *wall underlays* shall be in accordance with Table 23, and shall:

- a) Be minimum 7mm plywood, or 6mm fibre cement sheet
- b) Be installed with sheet edges fixed over solid framing
- c) Be over-fixed with a flexible *wall underlay* from Table 23 and installed as in Paragraph 9.1.7.1

COMMENT:  
Some proprietary systems may not require the addition of a flexible *underlay*

## Step P2 – Cut the Underlay

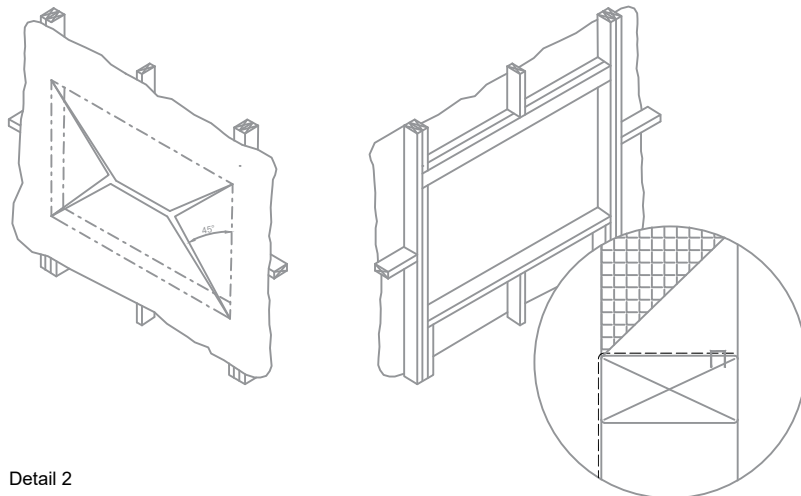
Clause 9.1.5 a) describes the application of a flexible wall underlay.

Amend 5 Aug 2011	<b>9.1.5 Wall underlays to wall openings</b>
	Prior to window or door installation:
Amend 5 Aug 2011	Flexible wall underlay shall be cut and dressed into all sides of openings as per Figure 72A and B,

To achieve this, follow these steps;

- Cut the building underlay at 45° away from each corner.
- Fold the flaps tightly into the opening and secure to the framing on all sides.
- Trim off excess underlay after fixing.

Note: Figures 72A & 72B do not show the inner extent of the flexible wall underlay. The industry trend has been to cut this off at the inner corner of the framing as wrapping around sometimes interferes with the internal linings. Ensure the underlay is fixed tightly to the framework.



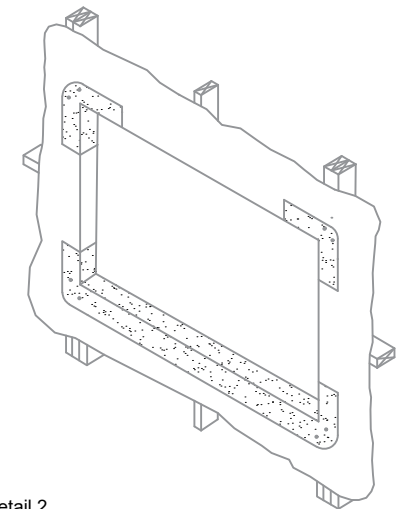
Detail 2

## Step P3 – Flexible Flashing Tape

After ensuring the flashing tape to be used meets the criteria set out in Clause 9.1.5 b), follow these steps to satisfy the clause;

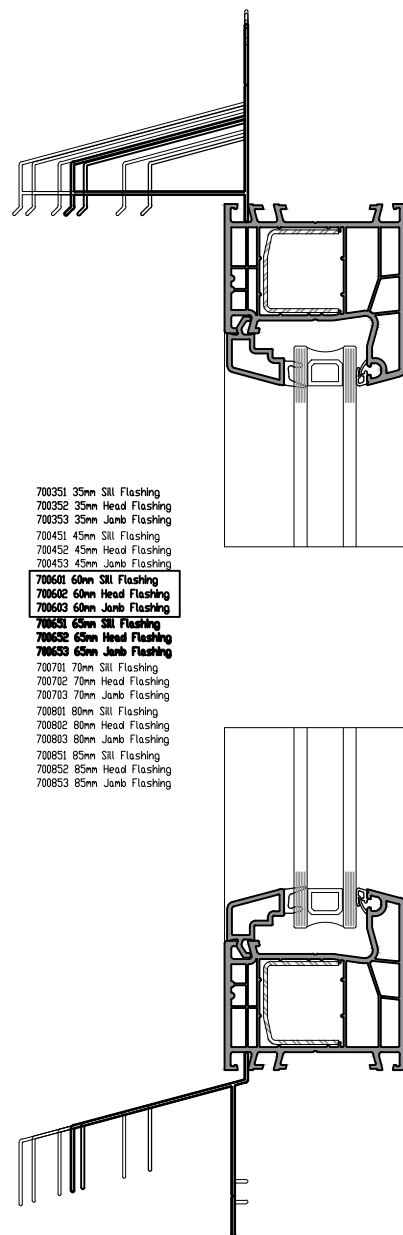
- Cut the flashing tape for the sill at least 200mm wider than the opening.
- Fit the tape, as described in the manufacturers literature, with the inner edge of the tape flush with the inside line of the framing, so that it extends a minimum of 100mm up each jamb ensuring timber framing is covered.
- Ensure the tape is securely adhered to the underlay on all surfaces and fits tightly into each of the corners.
- Cut two more pieces of tape at least 200mm long and fit into each of the upper corners as described above ensuring timber framing is covered.

Amend 5 Aug 2011	b) Flexible flashing tape shall be applied to head and sill framing as shown in Figures 72A and 72B. Flexible flashing tape shall:
Amend 5 Aug 2011	i) Comply with parts 3.2 and 4 of ICBO Acceptance Criteria AC148, and
Amend 5 Aug 2011	ii) be compatible with the wall underlay
	<b>COMMENT:</b>
	Dressing the wall underlay around the framing timber and providing a flexible air seal limits airflow around the window reveal.
	The flexible flashing tape keeps any water that does get past the cladding, or through the joinery, from direct contact with the timber.



Detail 2

Note: Ensure all exposed timber is covered, particularly in the corners. This may mean the tape has to extend further than nominated.



700351 35mm Sill Flashing  
700352 35mm Head Flashing  
700353 35mm Jamb Flashing  
700451 45mm Sill Flashing  
700452 45mm Head Flashing  
700453 45mm Jamb Flashing

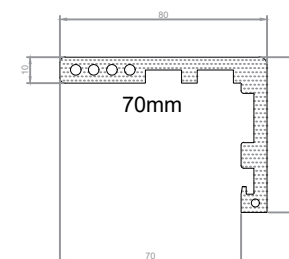
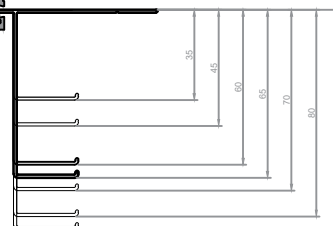
700601 60mm Sill Flashing  
700602 60mm Head Flashing  
700603 60mm Jamb Flashing

700701 70mm Sill Flashing  
700702 70mm Head Flashing  
700703 70mm Jamb Flashing

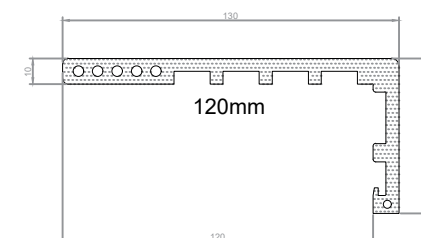
700801 80mm Sill Flashing  
700802 80mm Head Flashing  
700803 80mm Jamb Flashing

700851 85mm Sill Flashing  
700852 85mm Head Flashing  
700853 85mm Jamb Flashing

FLASHING KITS	RECOMMENDED CLADDING DIMs	SOME TYPICAL APPLICATIONS
35mm	25 to 29mm	19 Cavity & 9mm Sheet -OR- 19 Cavity & Folded Metal Cladding
45mm	35 to 39mm	19 Cavity & 19mm Sheet -OR- 19 Cavity & Rusticated Weatherboard
60mm	50 to 54mm	19 Cavity & Bevel-Back Weatherboard -OR- 45 Cavity & 9mm Sheet
65mm	55 to 59mm	50 Cavity & 70 Brick -OR- 45 Cavity & Folded Metal Cladding
70mm	60 to 69mm	45 Cavity & 19mm Sheet -OR- 45 Cavity & Rusticated Weatherboard
80mm	70 to 74mm	19 Cavity & Bevel-Back Weatherboard with Facings
85mm	75 to 79mm	45 Cavity & Bevel-Back Weatherboard



STARKITRAVE - FAST  
ARCHITRAVE & REVEAL SYSTEM



# AMBIANCE

Inline Window Systems

**STÄRKE**

DISCLAIMER: THIS INFORMATION IS FOR GUIDANCE ONLY. STÄRKE GROUP LIMITED (TRADING AS STÄRKE) MAKES NO WARRANTY OR REPRESENTATION OF ANY KIND, EXPRESS OR IMPLIED, REGARDING THE COMPLETENESS, ACCURACY, RELIABILITY OR SUITABILITY OF THE PRODUCT SHOWN HEREIN. RELIANCE ON THIS INFORMATION IS AT THE CUSTOMER'S SOLE RISK. IT IS RECOMMENDED THAT THE CUSTOMER SEEKS PROFESSIONAL ADVICE ON THE SUITABILITY OF THE PRODUCT FOR SPECIFIC APPLICATIONS. FOR TECHNICAL INFORMATION ON THE PRODUCT, PLEASE CONTACT STÄRKE.



FLASHING TAPE LAPPED  
OVER HEAD FLASHING

50x50 ANGLE FORMS  
FLASHING END-STOPS

PROPRIETARY HEAD  
FLASHING BY STARKE.  
SQ CUT @ FRAME  
PLUS 120mm

TESCON EXTORA  
PROFIL FLASHING TAPE  
TO EXTERNAL HEAD &  
JAMBS RECOMMENDED  
FOR "EXTRA HIGH"  
WIND ZONE & ABOVE,  
OR FOR IMPROVED  
THERMAL  
PERFORMANCE.

STARKE AMBIANCE  
INLINE WINDOW  
SYSTEM -  
MASTERSPEC  
4541SU uPVC

JOINERY SIZE

6 mm

8g x 60 SS SCREWS  
@ 450 CTRS

10g x 60 SS SCREWS  
@ 450 CTRS

WRAP/TAPE/DPM TO  
E2/AS1 BY OTHERS,  
RETURNS INTO  
OPENING TO MEET  
AIRSEAL

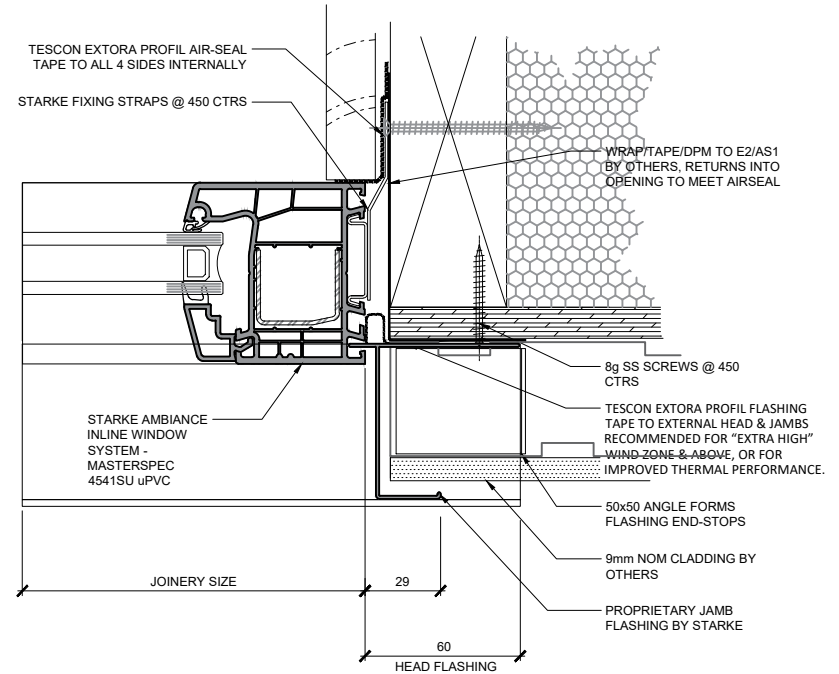
TESCON EXTORA PROFIL AIR-SEAL  
TAPE TO ALL 4 SIDES INTERNALLY

STARKE FIXING STRAPS @ 450 CTRS

SIPS / 45 Cavity / 9mm Sheet

Fixed Lite

NO PEF ROD, FOAM OR WET  
SEALANT REQUIRED.  
AIR-TIGHTNESS IS PROVIDED BY  
AIR-SEAL TAPE



STARKE AMBIANCE  
INLINE WINDOW  
SYSTEM -  
MASTERSPEC  
4541SU uPVC

JOINERY SIZE

PROPRIETARY SILL  
FLASHING BY STARKE.  
SQ CUT @ FRAME  
PLUS 60mm

SYSTEM DRAINAGE  
OUTLET. DO NOT  
OBSTRUCT !

STARKE FIXING STRAPS  
@ 450 CTRS

TESCON EXTORA PROFIL AIR-SEAL TAPE  
TO ALL 4 SIDES  
INTERNALLY

LINER / INTERNAL  
FINISH BY OTHERS

10g x 60 SS  
SCREWS @ 450  
CTRS

8g SS SCREWS @ 450  
CTRS

5

# AMBIANCE

Inline Window Systems

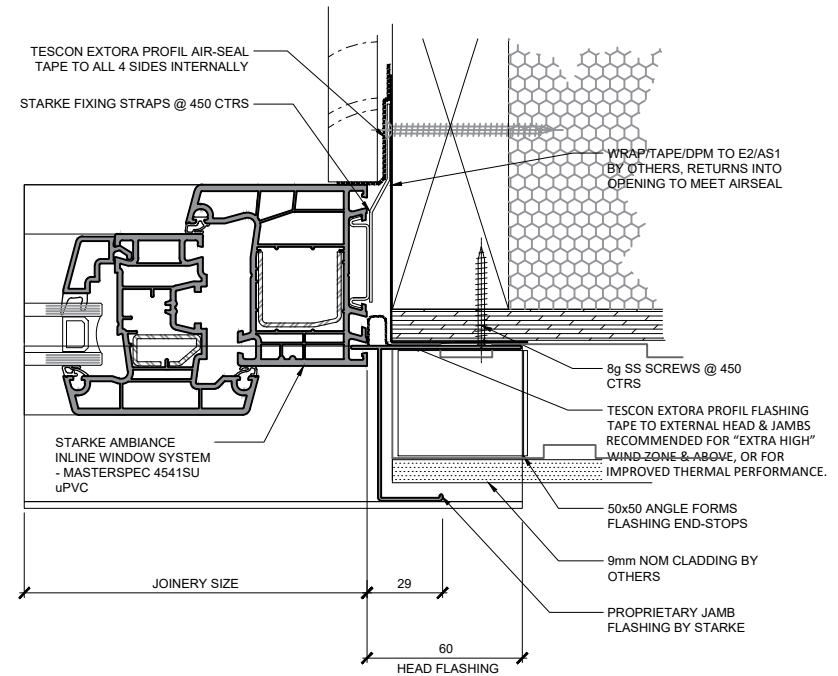
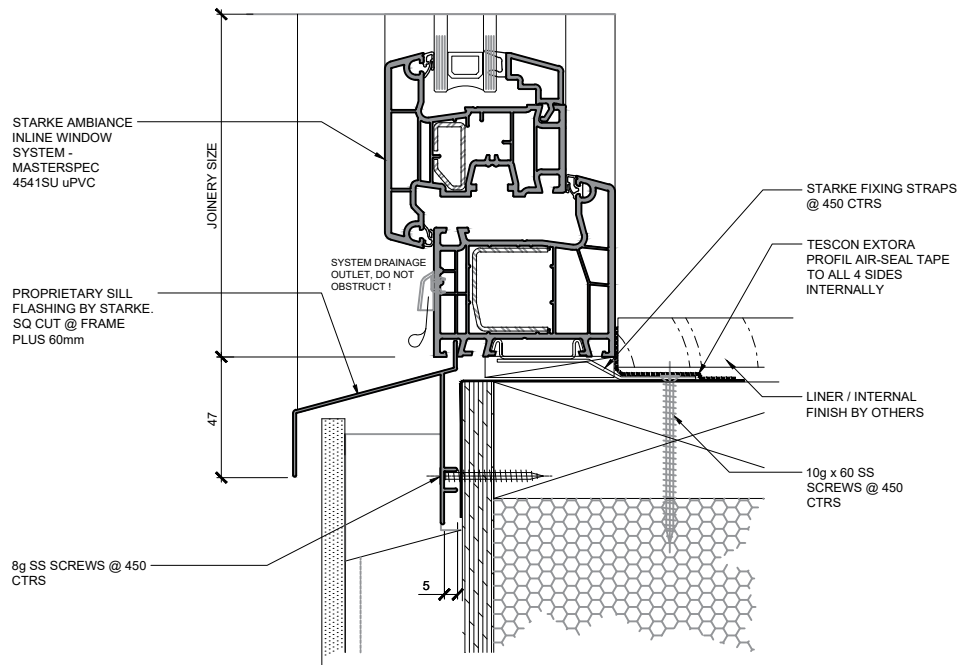
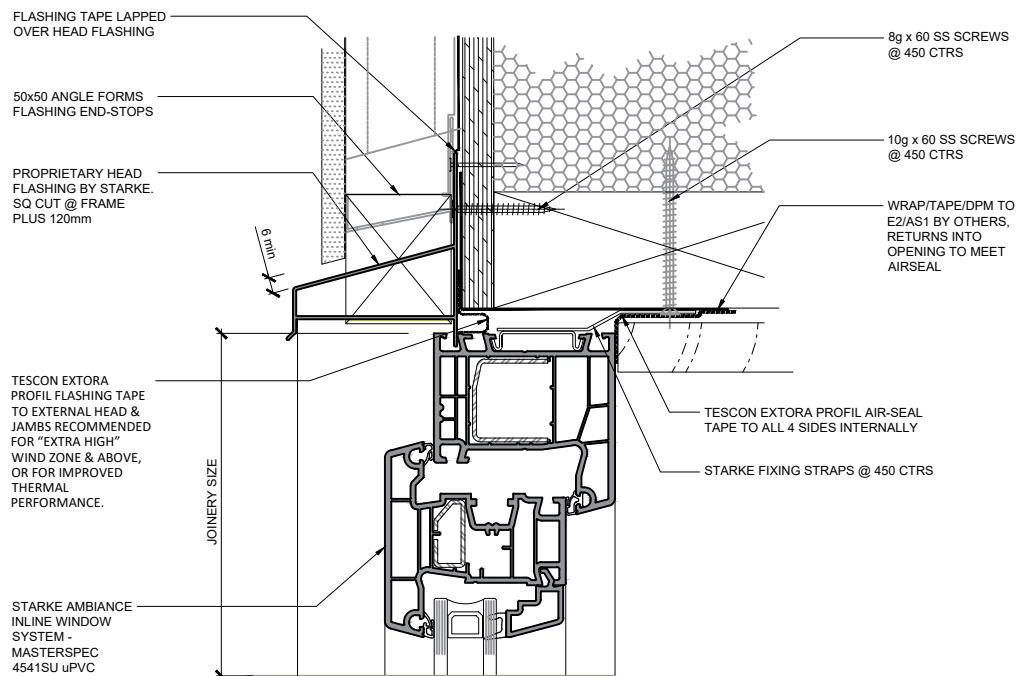
**STARKE**

DISCLAIMER: THIS INFORMATION IS FOR GUIDANCE ONLY. STARKE GROUP LIMITED (TRADING AS STARKE) MAKES NO WARRANTY OR REPRESENTATION OF ANY KIND, EXPRESS OR IMPLIED, REGARDING THE COMPLETENESS, ACCURACY, RELIABILITY OR SUITABILITY OF THE PRODUCT SHOWN HEREIN. RELIANCE ON THIS INFORMATION IS AT THE CUSTOMER'S SOLE RISK. IT IS RECOMMENDED THAT THE CUSTOMER SEEKS PROFESSIONAL ADVICE ON THE SUITABILITY OF THE PRODUCT FOR SPECIFIC APPLICATIONS. FOR TECHNICAL INFORMATION ON THE PRODUCT, PLEASE CONTACT STARKE.

SIPS / 45 Cavity / 9mm Sheet

Awning open out

NO PEF ROD, FOAM OR WET  
SEALANT REQUIRED.  
AIR-TIGHTNESS IS PROVIDED BY  
AIR-SEAL TAPE



# AMBIANCE

Inline Window Systems

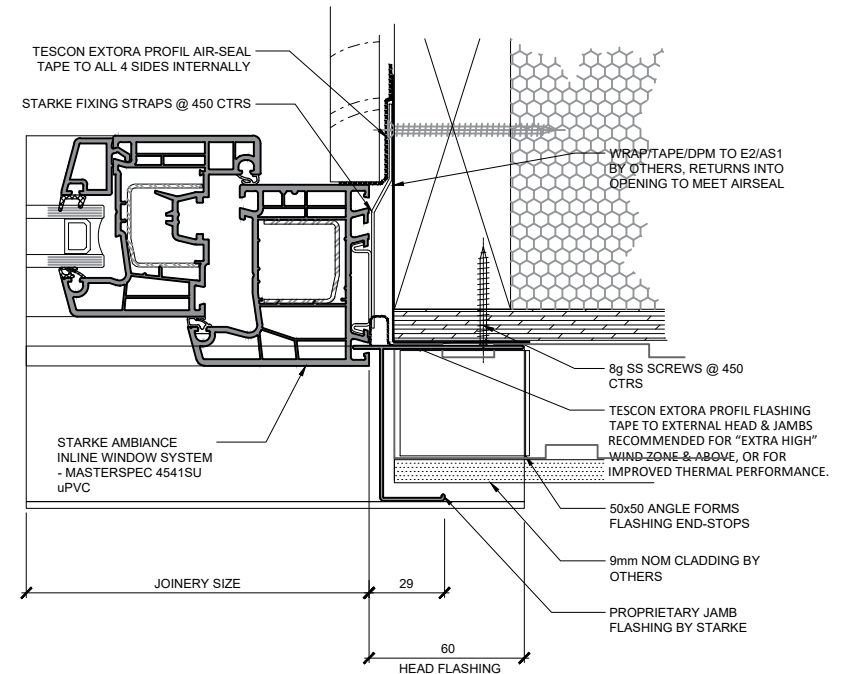
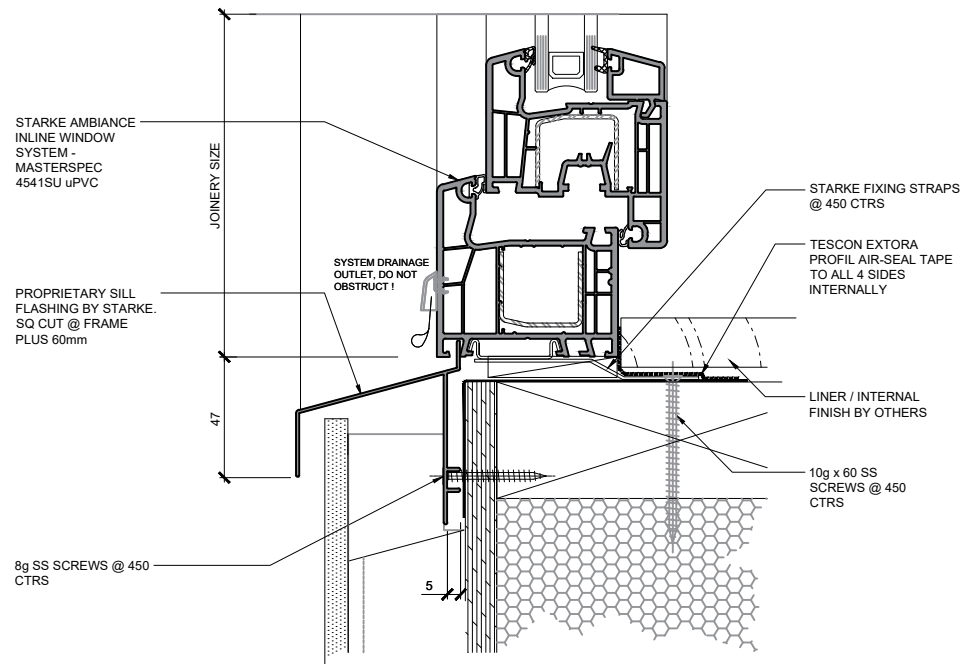
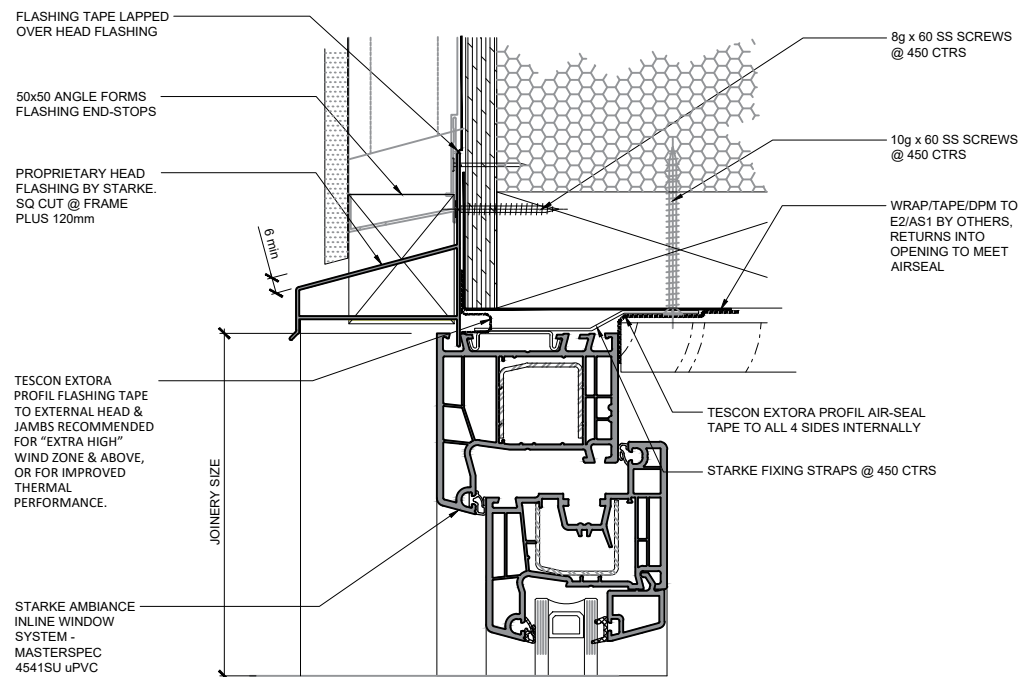
**STÄRKE**

DISCLAIMER: THIS INFORMATION IS FOR GUIDANCE ONLY. STARKE GROUP LIMITED (TRADING AS STÄRKE) MAKES NO WARRANTY OR REPRESENTATION OF ANY KIND, EXPRESS OR IMPLIED, REGARDING THE COMPLETENESS, ACCURACY, RELIABILITY OR SUITABILITY OF THE PRODUCT SHOWN HEREIN. RELIANCE ON THIS INFORMATION IS AT THE CUSTOMER'S SOLE RISK. IT IS RECOMMENDED THAT THE CUSTOMER SEEKS PROFESSIONAL ADVICE ON THE SUITABILITY OF THE PRODUCT FOR SPECIFIC APPLICATIONS. FOR TECHNICAL INFORMATION ON THE PRODUCT, PLEASE CONTACT STÄRKE.

SIPS / 45 Cavity / 9mm Sheet

Open in / Tilt & Turn

NO PEF ROD, FOAM OR WET  
SEALANT REQUIRED.  
AIR-TIGHTNESS IS PROVIDED BY  
AIR-SEAL TAPE



# AMBIANCE

Inline Window Systems

**STÄRKE**

DISCLAIMER: THIS INFORMATION IS FOR GUIDANCE ONLY. STARKE GROUP LIMITED (TRADING AS STÄRKE) MAKES NO WARRANTY OR REPRESENTATION OF ANY KIND, EXPRESS OR IMPLIED, REGARDING THE COMPLETENESS, ACCURACY, RELIABILITY OR SUITABILITY OF THE PRODUCT SHOWN HEREIN. RELIANCE ON THIS INFORMATION IS AT THE CUSTOMER'S SOLE RISK. IT IS RECOMMENDED THAT THE CUSTOMER SEEKS PROFESSIONAL ADVICE ON THE SUITABILITY OF THE PRODUCT FOR SPECIFIC APPLICATIONS. FOR TECHNICAL INFORMATION ON THE PRODUCT, PLEASE CONTACT STÄRKE.

SIPS / 45 Cavity / 9mm Sheet

Sliding Window

NO PEF ROD, FOAM OR WET  
SEALANT REQUIRED.  
AIR-TIGHTNESS IS PROVIDED BY  
AIR-SEAL TAPE

FLASHING TAPE LAPPED  
OVER HEAD FLASHING

50x50 ANGLE FORMS  
FLASHING END-STOPS

PROPRIETARY HEAD  
FLASHING BY STARKE.  
SQ CUT @ FRAME  
PLUS 120mm

8g x 32 SS SCREWS  
@ 450 CTRS

7.5 x 102 SS SCREWS  
@ 450 CTRS

WRAP/TAPE/DPM TO  
E2/AS1 BY OTHERS,  
RETURNS INTO  
OPENING TO MEET  
AIRSEAL

TESCON EXTORA  
PROFIL FLASHING TAPE  
TO EXTERNAL HEAD &  
JAMBS RECOMMENDED  
FOR "EXTRA HIGH"  
WIND ZONE & ABOVE,  
OR FOR IMPROVED  
THERMAL  
PERFORMANCE.

LINER / INTERNAL  
FINISH BY OTHERS

TESCON EXTORA PROFIL  
AIR-SEAL TAPE TO ALL 4  
SIDES INTERNALLY

STARKE AMBIANCE  
INLINE WINDOW  
SYSTEM -  
MASTERSPEC  
4541SU uPVC

STARKE AMBIANCE  
INLINE WINDOW  
SYSTEM -  
MASTERSPEC  
4541SU uPVC

PROPRIETARY SILL  
FLASHING BY STARKE.  
SQ CUT @ FRAME  
PLUS 60mm

SYSTEM DRAINAGE  
OUTLET, DO NOT  
OBSTRUCT!

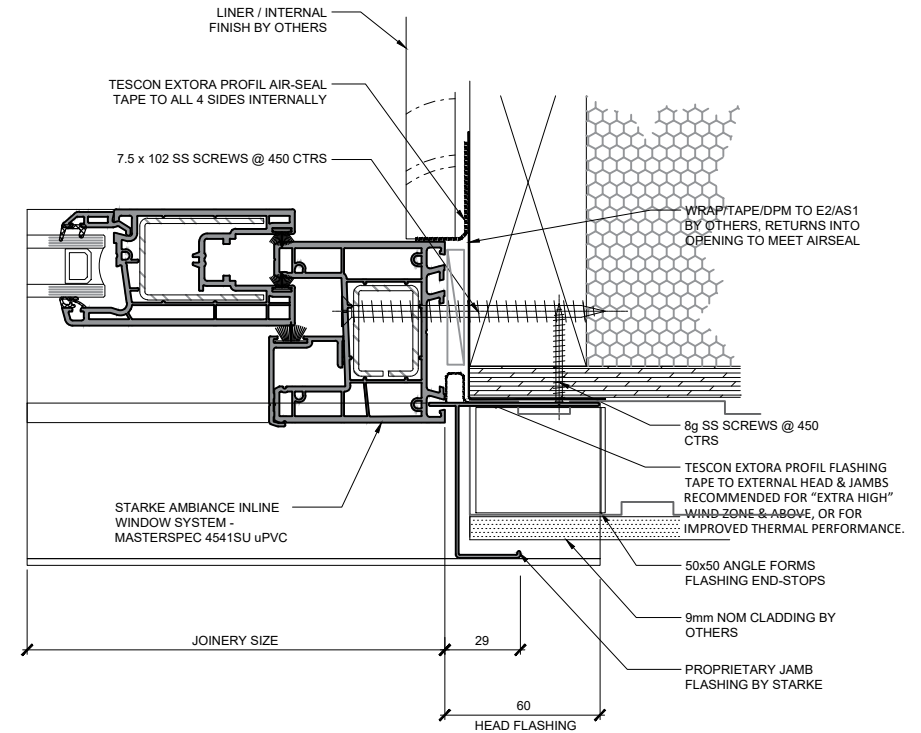
STARKE FIXING STRAPS  
@ 450 CTRS

TESCON EXTORA  
PROFIL AIR-SEAL TAPE  
TO ALL 4 SIDES  
INTERNALLY

LINER / INTERNAL  
FINISH BY OTHERS

10g x 60 SS  
SCREWS @ 450  
CTRS

8g SS SCREWS @ 450  
CTRS



### \*IMPORTANT\*

IT IS CRITICAL THAT THE JOINERY  
SILL IS PACKED PERFECTLY LEVEL  
TO ENSURE THE CORRECT  
OPERATION OF ANY HIGH  
PERFORMANCE SLIDER

# AMBIANCE

Inline Window Systems

# STARKE

FLASHING TAPE LAPPED  
OVER HEAD FLASHING

50x50 ANGLE FORMS  
FLASHING END-STOPS

PROPRIETARY HEAD  
FLASHING BY STARKE.  
SQ CUT @ FRAME  
PLUS 120mm

TESCON EXTORA  
PROFIL FLASHING TAPE  
TO EXTERNAL HEAD &  
JAMBS RECOMMENDED  
FOR "EXTRA HIGH"  
WIND ZONE & ABOVE,  
OR FOR IMPROVED  
THERMAL  
PERFORMANCE.

STARKE AMBIANCE  
INLINE WINDOW  
SYSTEM -  
MASTERSPEC  
4541SU uPVC

JOINERY SIZE

6 mm

8g x 60 SS SCREWS  
@ 450 CTRS

10g x 60 SS SCREWS  
@ 450 CTRS

WRAP/TAPE/DPM TO  
E2/AS1 BY OTHERS,  
RETURNS INTO  
OPENING TO MEET  
AIRSEAL

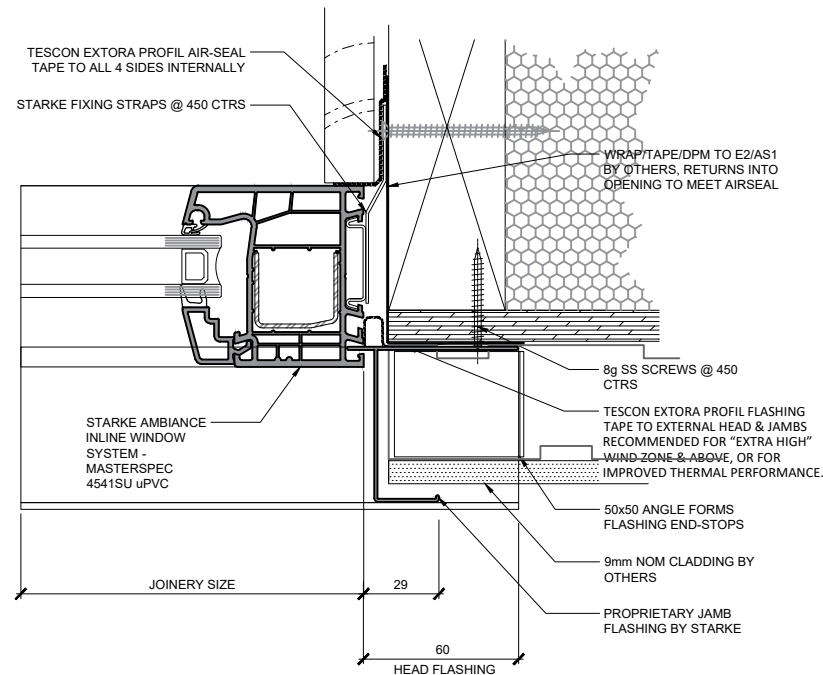
TESCON EXTORA PROFIL AIR-SEAL  
TAPE TO ALL 4 SIDES INTERNALLY

STARKE FIXING STRAPS @ 450 CTRS

SIPS / 45 Cavity / 9mm Sheet

Fixed Lite

NO PEF ROD, FOAM OR WET  
SEALANT REQUIRED.  
AIR-TIGHTNESS IS PROVIDED BY  
AIR-SEAL TAPE



STARKE AMBIANCE  
INLINE WINDOW  
SYSTEM -  
MASTERSPEC  
4541SU uPVC

JOINERY SIZE

PROPRIETARY SILL  
FLASHING BY STARKE.  
SQ CUT @ FRAME  
PLUS 60mm

SYSTEM DRAINAGE  
OUTLET. DO NOT  
OBSTRUCT !

STARKE FIXING STRAPS  
@ 450 CTRS

TESCON EXTORA PROFIL AIR-SEAL  
TAPE TO ALL 4 SIDES INTERNALLY

LINER / INTERNAL  
FINISH BY OTHERS

WRAP/TAPE/DPM  
RETURN INTO  
OPENING BY OTHERS

10g x 60 SS SCREWS  
@ 450 CTRS

8g SS SCREWS @ 450  
CTRS

5

# AMBIANCE

Inline Window Systems

**STARKE**

DISCLAIMER: THIS INFORMATION IS FOR GUIDANCE ONLY. STARKE GROUP LIMITED (TRADING AS STARKE) MAKES NO WARRANTY OR REPRESENTATION OF ANY KIND, EXPRESS OR IMPLIED, REGARDING THE COMPLETENESS, ACCURACY, RELIABILITY OR SUITABILITY OF THE PRODUCT SHOWN HEREIN. RELIANCE ON THIS INFORMATION IS AT THE CUSTOMER'S SOLE RISK. IT IS RECOMMENDED THAT THE CUSTOMER SEEKS PROFESSIONAL ADVICE ON THE SUITABILITY OF THE PRODUCT FOR SPECIFIC APPLICATIONS. FOR TECHNICAL INFORMATION ON THE PRODUCT, PLEASE CONTACT STARKE.

FLASHING TAPE LAPPED  
OVER HEAD FLASHING

50x50 ANGLE FORMS  
FLASHING END-STOPS

PROPRIETARY HEAD  
FLASHING BY STARKE.  
SQ CUT @ FRAME  
PLUS 120mm

TESCON EXTORA  
PROFIL FLASHING TAPE  
TO EXTERNAL HEAD &  
JAMBS RECOMMENDED  
FOR "EXTRA HIGH"  
WIND ZONE & ABOVE,  
OR FOR IMPROVED  
THERMAL  
PERFORMANCE.

STARKE AMBIANCE  
INLINE WINDOW  
SYSTEM -  
MASTERSPEC  
4541SU uPVC

STARKE AMBIANCE  
INLINE WINDOW  
SYSTEM -  
MASTERSPEC  
4541SU uPVC

PROPRIETARY SILL  
FLASHING BY STARKE.  
SQ CUT @ FRAME  
PLUS 60mm

8g SS SCREWS @ 450  
CTRS

8g x 60 SS SCREWS  
@ 450 CTRS

10g x 60 SS SCREWS  
@ 450 CTRS

WRAP/TAPE/DPM TO  
E2/AS1 BY OTHERS,  
RETURNS INTO  
OPENING TO MEET  
AIRSEAL

TESCON EXTORA PROFIL AIR-SEAL  
TAPE TO ALL 4 SIDES INTERNALLY

STARKE FIXING STRAPS @ 450 CTRS

TESCON EXTORA PROFIL AIR-SEAL  
TAPE TO ALL 4 SIDES INTERNALLY

STARKE FIXING STRAPS @ 450 CTRS

STARKE AMBIANCE INLINE  
WINDOW SYSTEM -  
MASTERSPEC 4541SU uPVC

SIPS / 45 Cavity / 9mm Sheet

Hinged door Open out

Timber mid-floor, Non-rebated

NO PEF ROD, FOAM OR WET  
SEALANT REQUIRED.  
AIR-TIGHTNESS IS PROVIDED BY  
AIR-SEAL TAPE

WRAP/TAPE/DPM TO E2/AS1  
BY OTHERS, RETURNS INTO  
OPENING TO MEET AIRSEAL

8g SS SCREWS @ 450  
CTRS

TESCON EXTORA PROFIL FLASHING  
TAPE TO EXTERNAL HEAD & JAMBS  
RECOMMENDED FOR "EXTRA HIGH"  
WIND ZONE & ABOVE, OR FOR  
IMPROVED THERMAL PERFORMANCE.

50x50 ANGLE FORMS  
FLASHING END-STOPS

9mm NOM CLADDING BY  
OTHERS

PROPRIETARY JAMB  
FLASHING BY STARKE

JOINERY SIZE

29

60  
HEAD FLASHING

STARKE FIXING STRAPS  
@ 450 CTRS

TESCON EXTORA PROFIL AIR-SEAL  
TAPE TO ALL 4 SIDES INTERNALLY

LINER / INTERNAL  
FINISH BY OTHERS

WRAP/TAPE/DPM  
RETURN INTO  
OPENING BY OTHERS

10g x 60 SS SCREWS  
@ 450 CTRS

DISCLAIMER: THIS INFORMATION IS FOR GUIDANCE ONLY. STARKE GROUP LIMITED (TRADING AS STARKE) MAKES NO WARRANTY OR REPRESENTATION OF ANY KIND, EXPRESS OR IMPLIED, REGARDING THE COMPLETENESS, ACCURACY, RELIABILITY OR SUITABILITY OF THE PRODUCT SHOWN HEREIN. RELIANCE ON THIS INFORMATION IS AT THE CUSTOMER'S SOLE RISK. IT IS RECOMMENDED THAT THE CUSTOMER SEEKS PROFESSIONAL ADVICE ON THE SUITABILITY OF THE PRODUCT FOR SPECIFIC APPLICATIONS. FOR TECHNICAL INFORMATION ON THE PRODUCT, PLEASE CONTACT STARKE.

# AMBIANCE

Inline Window Systems

**STARKE**

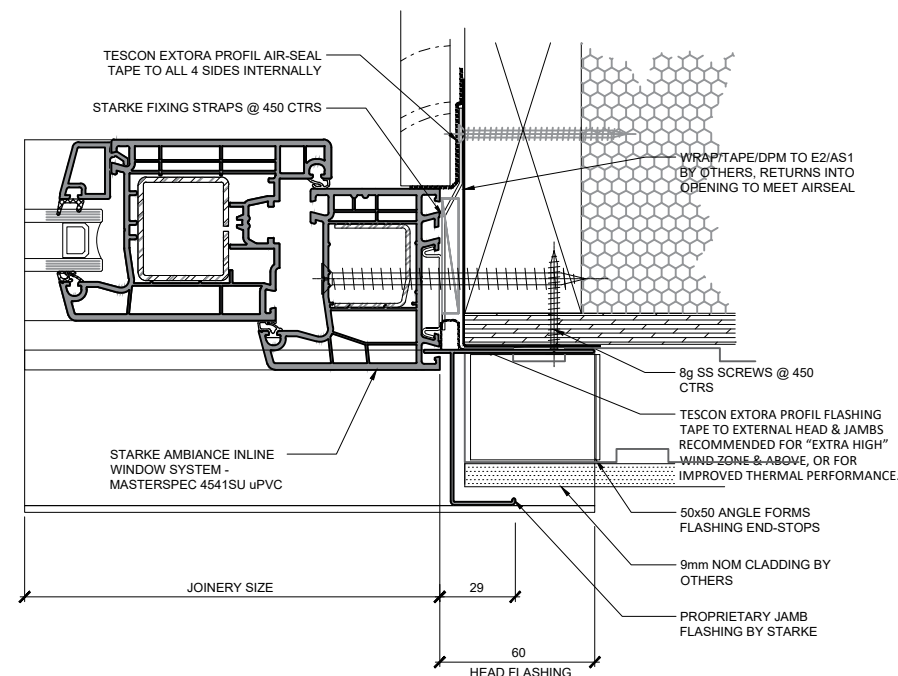
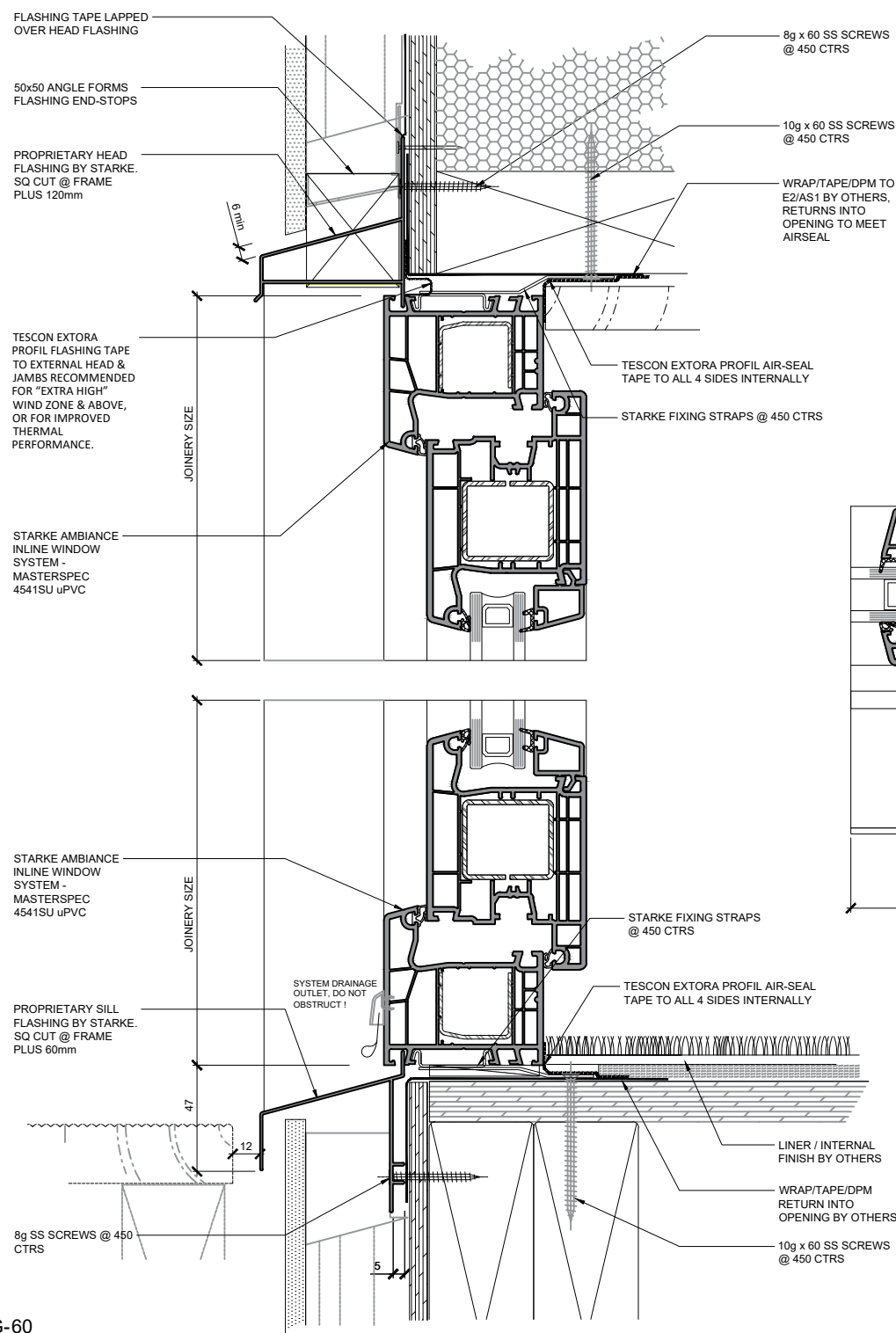


SIPS / 45 Cavity / 9mm Sheet

Hinged door Open in

Timber mid-floor, Non-rebated

NO PEF ROD, FOAM OR WET  
SEALANT REQUIRED.  
AIR-TIGHTNESS IS PROVIDED BY  
AIR-SEAL TAPE



# AMBIANCE

Inline Window Systems

**STARKE**

SIPS / 45 Cavity / 9mm Sheet

Sliding door

Timber mid-floor, Non-rebated

FLASHING TAPE LAPPED  
OVER HEAD FLASHING

50x50 ANGLE FORMS  
FLASHING END-STOPS

PROPRIETARY HEAD  
FLASHING BY STARKE.  
SQ CUT @ FRAME  
PLUS 120mm

TESCON EXTORA  
PROFIL FLASHING TAPE  
TO EXTERNAL HEAD &  
JAMBS RECOMMENDED  
FOR "EXTRA HIGH"  
WIND ZONE & ABOVE,  
OR FOR IMPROVED  
THERMAL PERFORMANCE.

STARKE AMBIANCE  
INLINE WINDOW  
SYSTEM -  
MASTERSPEC  
4541SU uPVC

STARKE AMBIANCE  
INLINE WINDOW  
SYSTEM -  
MASTERSPEC  
4541SU uPVC

PROPRIETARY SILL  
FLASHING BY STARKE.  
SQ CUT @ FRAME  
PLUS 60mm

8g SS SCREWS @ 450  
CTRS

8g x 32 SS SCREWS  
@ 450 CTRS

7.5 x 102 SS SCREWS  
@ 450 CTRS

WRAP/TAPE/DPM TO  
E2/AS1 BY OTHERS,  
RETURNS INTO  
OPENING TO MEET  
AIRSEAL

LINER / INTERNAL  
FINISH BY OTHERS

TESCON EXTORA PROFIL  
AIR-SEAL TAPE TO ALL 4  
SIDES INTERNALLY

LINER / INTERNAL  
FINISH BY OTHERS

TESCON EXTORA PROFIL AIR-SEAL  
TAPE TO ALL 4 SIDES INTERNALLY

7.5 x 102 SS SCREWS @ 450 CTRS

STARKE AMBIANCE INLINE  
WINDOW SYSTEM -  
MASTERSPEC 4541SU uPVC

WRAP/TAPE/DPM TO E2/AS1  
BY OTHERS, RETURNS INTO  
OPENING TO MEET AIRSEAL

8g SS SCREWS @ 450  
CTRS

TESCON EXTORA PROFIL FLASHING  
TAPE TO EXTERNAL HEAD & JAMBS  
RECOMMENDED FOR "EXTRA HIGH"  
WIND-ZONE-&-ABOVE, OR FOR  
IMPROVED THERMAL PERFORMANCE.

50x50 ANGLE FORMS  
FLASHING END-STOPS

9mm NOM CLADDING BY  
OTHERS

PROPRIETARY JAMB  
FLASHING BY STARKE

### \*IMPORTANT\*

IT IS CRITICAL THAT THE JOINERY  
SILL IS PACKED PERFECTLY LEVEL  
TO ENSURE THE CORRECT  
OPERATION OF ANY HIGH  
PERFORMANCE DOOR.

STARKE FIXING STRAPS  
@ 450 CTRS

TESCON EXTORA PROFIL AIR-SEAL  
TAPE TO ALL 4 SIDES INTERNALLY

LINER / INTERNAL  
FINISH BY OTHERS

WRAP/TAPE/DPM  
RETURN INTO  
OPENING BY OTHERS

10g x 60 SS SCREWS  
@ 450 CTRS

DISCLAIMER: THIS INFORMATION IS FOR GUIDANCE ONLY. STARKE GROUP LIMITED (TRADING AS STÄRKE) MAKES NO WARRANTY OR REPRESENTATION OF ANY KIND, EXPRESS OR IMPLIED, REGARDING THE COMPLETENESS, ACCURACY, RELIABILITY OR SUITABILITY OF THE PRODUCT SHOWN HEREIN. RELIANCE ON THIS INFORMATION IS AT THE CUSTOMER'S SOLE RISK. IT IS RECOMMENDED THAT THE CUSTOMER SEEKS PROFESSIONAL ADVICE ON THE SUITABILITY OF THE PRODUCT FOR SPECIFIC APPLICATIONS. FOR TECHNICAL INFORMATION ON THE PRODUCT, PLEASE CONTACT STÄRKE.

NO PEF ROD, FOAM OR WET  
SEALANT REQUIRED.  
AIR-TIGHTNESS IS PROVIDED BY  
AIR-SEAL TAPE

# AMBIANCE

Inline Window Systems

**STÄRKE**



FLASHING TAPE LAPPED  
OVER HEAD FLASHING

50x50 ANGLE FORMS  
FLASHING END-STOPS

PROPRIETARY HEAD  
FLASHING BY STARKE.  
SQ CUT @ FRAME  
PLUS 120mm

TESCON EXTORA  
PROFIL FLASHING TAPE  
TO EXTERNAL HEAD &  
JAMBS RECOMMENDED  
FOR "EXTRA HIGH"  
WIND ZONE & ABOVE,  
OR FOR IMPROVED  
THERMAL  
PERFORMANCE.

STARKE AMBIANCE  
INLINE WINDOW  
SYSTEM -  
MASTERSPEC  
4541SU uPVC

STARKE AMBIANCE  
INLINE WINDOW  
SYSTEM -  
MASTERSPEC  
4541SU uPVC

PROPRIETARY SILL  
FLASHING BY STARKE.  
SQ CUT @ FRAME  
PLUS 60mm

8g SS SCREWS @ 450  
CTRS

8g x 60 SS SCREWS  
@ 450 CTRS

7.5 x 102 SS SCREWS  
@ 450 CTRS

WRAP/TAPE/DPM TO  
E2/AS1 BY OTHERS,  
RETURNS INTO  
OPENING TO MEET  
AIRSEAL

TESCON EXTORA PROFIL  
AIR-SEAL TAPE TO ALL 4  
SIDES INTERNALLY

### \*IMPORTANT\*

IT IS CRITICAL THAT THE JOINERY  
SILL IS PACKED PERFECTLY LEVEL  
TO ENSURE THE CORRECT  
OPERATION OF ANY HIGH  
PERFORMANCE DOOR.

STARKE FIXING STRAPS  
@ 450 CTRS

TESCON EXTORA PROFIL AIR-SEAL  
TAPE TO ALL 4 SIDES INTERNALLY

NO PEF ROD, FOAM OR WET  
SEALANT REQUIRED.  
AIR-TIGHTNESS IS PROVIDED BY  
AIR-SEAL TAPE

LINER / INTERNAL  
FINISH BY OTHERS

TESCON EXTORA PROFIL AIR-SEAL  
TAPE TO ALL 4 SIDES INTERNALLY

7.5 x 102 SS SCREWS  
@ 450 CTRS

STARKE AMBIANCE INLINE  
WINDOW SYSTEM -  
MASTERSPEC 4541SU uPVC

WRAP/TAPE/DPM TO E2/AS1  
BY OTHERS, RETURNS INTO  
OPENING TO MEET AIRSEAL

8g SS SCREWS @ 450  
CTRS

TESCON EXTORA PROFIL FLASHING  
TAPE TO EXTERNAL HEAD & JAMBS  
RECOMMENDED FOR "EXTRA HIGH"  
WIND ZONE & ABOVE, OR FOR  
IMPROVED THERMAL PERFORMANCE.

50x50 ANGLE FORMS  
FLASHING END-STOPS

9mm NOM CLADDING BY  
OTHERS

PROPRIETARY JAMB  
FLASHING BY STARKE

# AMBIANCE

Inline Window Systems

# STARKE

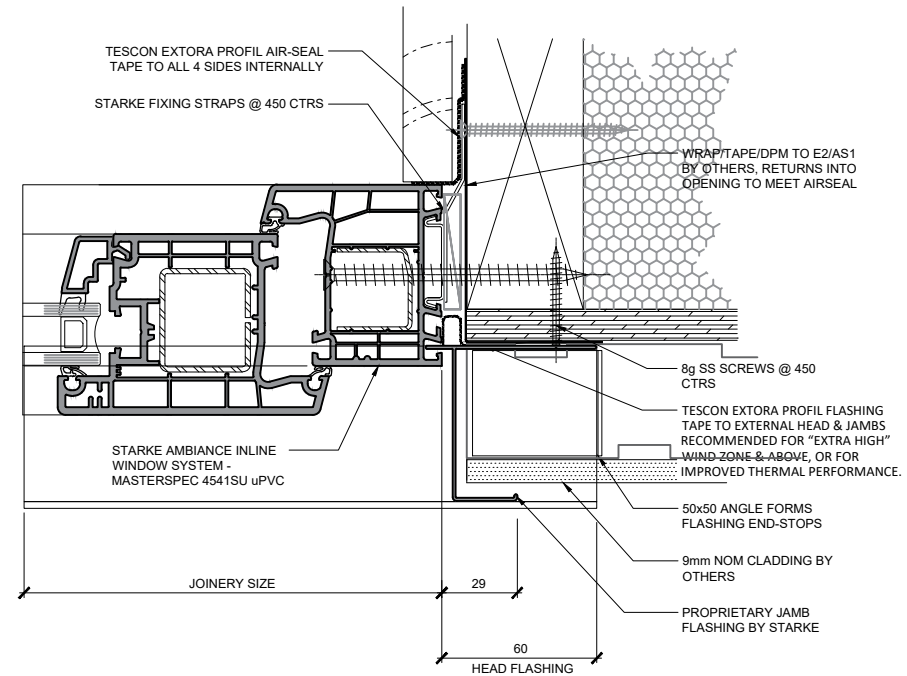
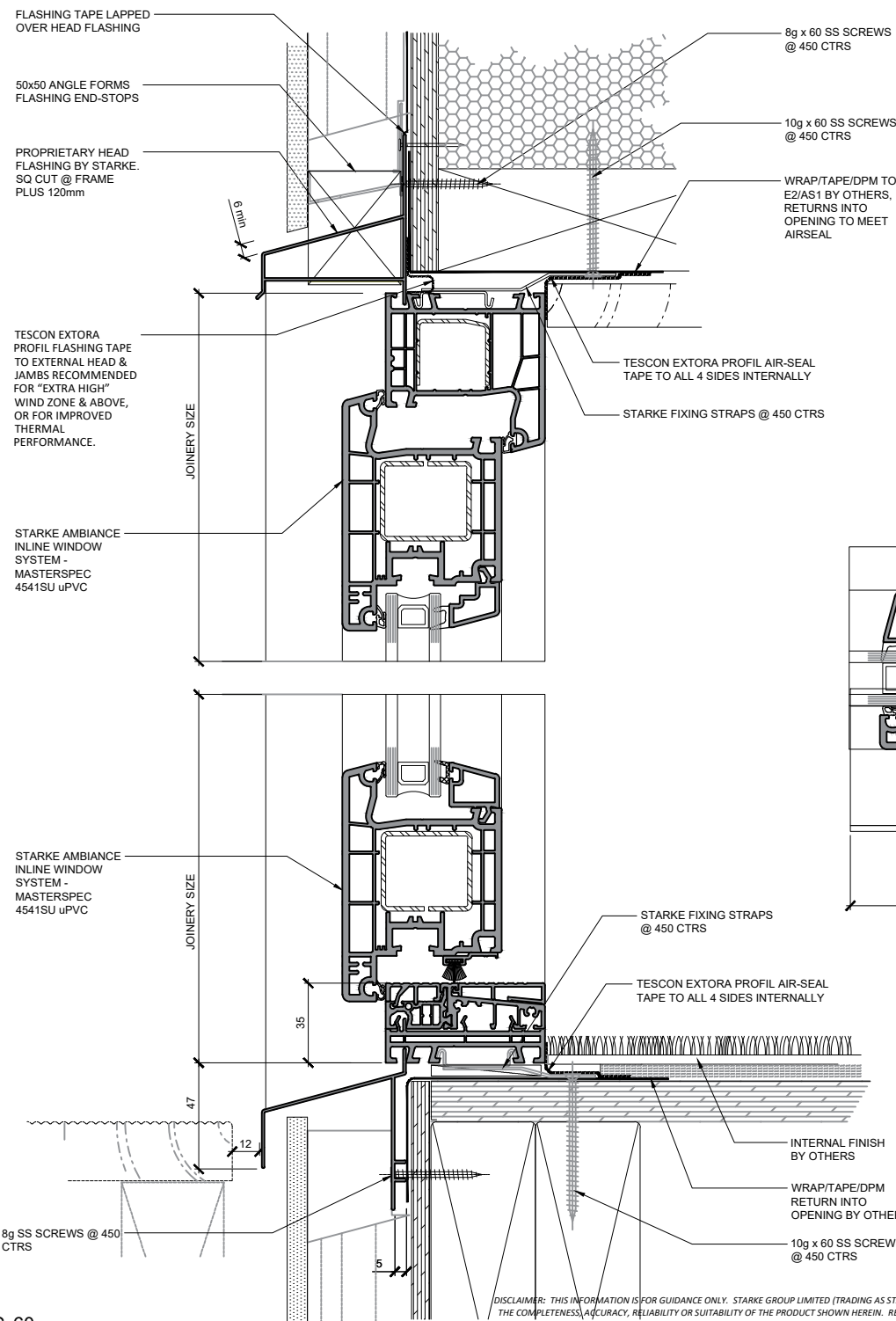
DISCLAIMER: THIS INFORMATION IS FOR GUIDANCE ONLY. STARKE GROUP LIMITED (TRADING AS STARKE) MAKES NO WARRANTY OR REPRESENTATION OF ANY KIND, EXPRESS OR IMPLIED, REGARDING THE COMPLETENESS, ACCURACY, RELIABILITY OR SUITABILITY OF THE PRODUCT SHOWN HEREIN. RELIANCE ON THIS INFORMATION IS AT THE CUSTOMER'S SOLE RISK. IT IS RECOMMENDED THAT THE CUSTOMER SEEKS PROFESSIONAL ADVICE ON THE SUITABILITY OF THE PRODUCT FOR SPECIFIC APPLICATIONS. FOR TECHNICAL INFORMATION ON THE PRODUCT, PLEASE CONTACT STARKE.

SIPS / 45 Cavity / 9mm Sheet

Hinged door Open out

Timber mid-floor, Non-rebated

NO PEF ROD, FOAM OR WET SEALANT REQUIRED.  
AIR-TIGHTNESS IS PROVIDED BY AIR-SEAL TAPE



# AMBIANCE

Inline Window Systems

**STARKE**

DISCLAIMER: THIS INFORMATION IS FOR GUIDANCE ONLY. STARKE GROUP LIMITED (TRADING AS STARKE) MAKES NO WARRANTY OR REPRESENTATION OF ANY KIND, EXPRESS OR IMPLIED, REGARDING THE COMPLETENESS, ACCURACY, RELIABILITY OR SUITABILITY OF THE PRODUCT SHOWN HEREIN. RELIANCE ON THIS INFORMATION IS AT THE CUSTOMER'S SOLE RISK. IT IS RECOMMENDED THAT THE CUSTOMER SEEKS PROFESSIONAL ADVICE ON THE SUITABILITY OF THE PRODUCT FOR SPECIFIC APPLICATIONS. FOR TECHNICAL INFORMATION ON THE PRODUCT, PLEASE CONTACT STARKE.

SIPS / 45 Cavity / 9mm Sheet

Hinged door Open in

Timber mid-floor, Non-rebated

NO PEF ROD, FOAM OR WET  
SEALANT REQUIRED.  
AIR-TIGHTNESS IS PROVIDED BY  
AIR-SEAL TAPE

FLASHING TAPE LAPPED  
OVER HEAD FLASHING

50x50 ANGLE FORMS  
FLASHING END-STOPS

PROPRIETARY HEAD  
FLASHING BY STARKE.  
SQ CUT @ FRAME  
PLUS 120mm

8g x 60 SS SCREWS  
@ 450 CTRS

10g x 60 SS SCREWS  
@ 450 CTRS

WRAP/TAPE/DPM TO  
E2/AS1 BY OTHERS,  
RETURNS INTO  
OPENING TO MEET  
AIRSEAL

TESCON EXTORA PROFIL  
FLASHING TAPE TO  
EXTERNAL HEAD & JAMBS  
RECOMMENDED FOR  
"EXTRA HIGH" WIND  
ZONE & ABOVE, OR FOR  
IMPROVED THERMAL  
PERFORMANCE.

TESCON EXTORA PROFIL AIR-SEAL  
TAPE TO ALL 4 SIDES INTERNALLY

STARKE FIXING STRAPS @ 450 CTRS

STARKE AMBIANCE  
INLINE WINDOW  
SYSTEM -  
MASTERSPEC  
4541SU uPVC

TESCON EXTORA PROFIL AIR-SEAL  
TAPE TO ALL 4 SIDES INTERNALLY

STARKE FIXING STRAPS @ 450 CTRS

WRAP/TAPE/DPM TO E2/AS1  
BY OTHERS, RETURNS INTO  
OPENING TO MEET AIRSEAL

8g SS SCREWS @ 450  
CTRS

TESCON EXTORA PROFIL FLASHING  
TAPE TO EXTERNAL HEAD & JAMBS  
RECOMMENDED FOR "EXTRA HIGH"  
WIND ZONE & ABOVE, OR FOR  
IMPROVED THERMAL PERFORMANCE.

50x50 ANGLE FORMS  
FLASHING END-STOPS

9mm NOM CLADDING BY  
OTHERS

PROPRIETARY JAMB  
FLASHING BY STARKE

STARKE AMBIANCE  
INLINE WINDOW  
SYSTEM -  
MASTERSPEC  
4541SU uPVC

STARKE FIXING STRAPS  
@ 450 CTRS

TESCON EXTORA PROFIL AIR-SEAL  
TAPE TO ALL 4 SIDES INTERNALLY

PROPRIETARY SILL  
FLASHING BY STARKE.  
SQ CUT @ FRAME  
PLUS 60mm

8g SS SCREWS @ 450  
CTRS

INTERNAL FINISH  
BY OTHERS

WRAP/TAPE/DPM  
RETURN INTO  
OPENING BY OTHERS

10g x 60 SS SCREWS  
@ 450 CTRS

DISCLAIMER: THIS INFORMATION IS FOR GUIDANCE ONLY. STARKE GROUP LIMITED (TRADING AS STÄRKE) MAKES NO WARRANTY OR REPRESENTATION OF ANY KIND, EXPRESS OR IMPLIED, REGARDING THE COMPLETENESS, ACCURACY, RELIABILITY OR SUITABILITY OF THE PRODUCT SHOWN HEREIN. RELIANCE ON THIS INFORMATION IS AT THE CUSTOMER'S SOLE RISK. IT IS RECOMMENDED THAT THE CUSTOMER SEEKS PROFESSIONAL ADVICE ON THE SUITABILITY OF THE PRODUCT FOR SPECIFIC APPLICATIONS. FOR TECHNICAL INFORMATION ON THE PRODUCT, PLEASE CONTACT STÄRKE.

# AMBIANCE

Inline Window Systems

**STÄRKE**

FLASHING TAPE LAPPED  
OVER HEAD FLASHING

50x50 ANGLE FORMS  
FLASHING END-STOPS

PROPRIETARY HEAD  
FLASHING BY STARKE.  
SQ CUT @ FRAME  
PLUS 120mm

TESCON EXTORA  
PROFIL FLASHING TAPE  
TO EXTERNAL HEAD &  
JAMBS RECOMMENDED  
FOR "EXTRA HIGH"  
WIND ZONE & ABOVE,  
OR FOR IMPROVED  
THERMAL  
PERFORMANCE.

STARKE AMBIANCE  
INLINE WINDOW  
SYSTEM -  
MASTERSPEC  
4541SU uPVC

JOINERY SIZE

JOINERY SIZE

STARKE AMBIANCE  
INLINE WINDOW  
SYSTEM -  
MASTERSPEC  
4541SU uPVC

30mm FLANGE AT SILL  
ONLY

SYSTEM DRAINAGE  
OUTLET. DO NOT  
OBSTRUCT !

30

5 Min

8g x 60 SS SCREWS  
@ 450 CTRS

10g x 60 SS SCREWS  
@ 450 CTRS

WRAP/TAPE/DPM TO  
E2/AS1 BY OTHERS,  
RETURNS INTO  
OPENING TO MEET  
AIRSEAL

TESCON EXTORA PROFIL AIR-SEAL  
TAPE TO ALL 4 SIDES INTERNALLY

STARKE FIXING STRAPS @ 450 CTRS

STARKE FIXING STRAPS  
@ 450 CTRS

TESCON EXTORA PROFIL AIR-SEAL  
TAPE TO ALL 4 SIDES INTERNALLY

LINER / INTERNAL  
FINISH BY OTHERS

WRAP/TAPE/DPM  
RETURN INTO  
OPENING BY OTHERS

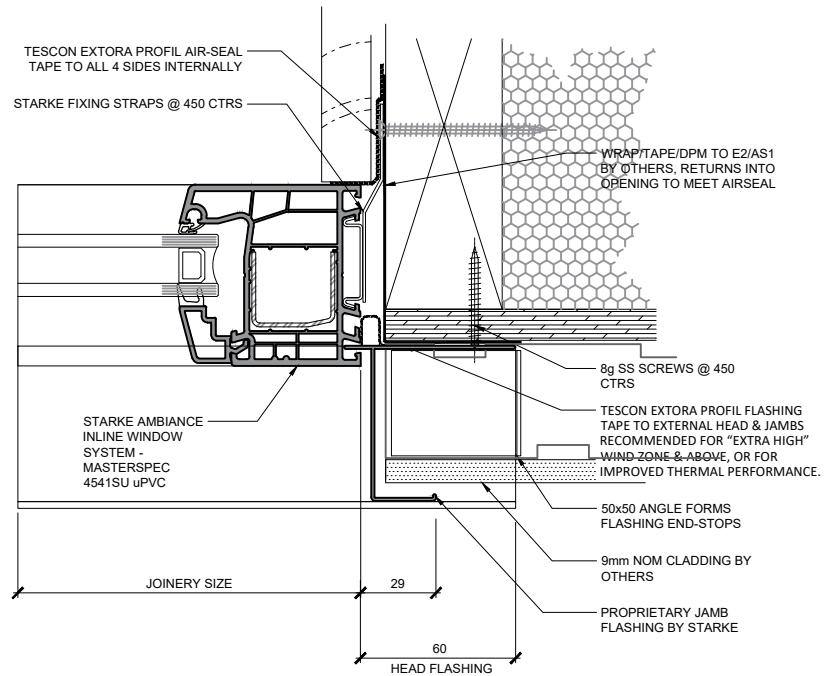
10g x 60 SS SCREWS  
@ 450 CTRS

SIPS / 45 Cavity / 9mm Sheet

Fixed Lite

Concrete ground floor, Non-rebated

NO PEF ROD, FOAM OR WET  
SEALANT REQUIRED.  
AIR-TIGHTNESS IS PROVIDED BY  
AIR-SEAL TAPE



# AMBIANCE

Inline Window Systems

**STARKE**

DISCLAIMER: THIS INFORMATION IS FOR GUIDANCE ONLY. STARKE GROUP LIMITED (TRADING AS STARKE) MAKES NO WARRANTY OR REPRESENTATION OF ANY KIND, EXPRESS OR IMPLIED, REGARDING THE COMPLETENESS, ACCURACY, RELIABILITY OR SUITABILITY OF THE PRODUCT SHOWN HEREIN. RELIANCE ON THIS INFORMATION IS AT THE CUSTOMER'S SOLE RISK. IT IS RECOMMENDED THAT THE CUSTOMER SEEKS PROFESSIONAL ADVICE ON THE SUITABILITY OF THE PRODUCT FOR SPECIFIC APPLICATIONS. FOR TECHNICAL INFORMATION ON THE PRODUCT, PLEASE CONTACT STARKE.

FLASHING TAPE LAPPED  
OVER HEAD FLASHING

50x50 ANGLE FORMS  
FLASHING END-STOPS

PROPRIETARY HEAD  
FLASHING BY STARKE.  
SQ CUT @ FRAME  
PLUS 120mm

6 mm

TESCON EXTORA  
PROFIL FLASHING TAPE  
TO EXTERNAL HEAD &  
JAMBS RECOMMENDED  
FOR "EXTRA HIGH"  
WIND ZONE & ABOVE,  
OR FOR IMPROVED  
THERMAL PERFORMANCE.

STARKE AMBIANCE  
INLINE WINDOW  
SYSTEM -  
MASTERSPEC  
4541SU uPVC

JOINERY SIZE

STARKE AMBIANCE  
INLINE WINDOW  
SYSTEM -  
MASTERSPEC  
4541SU uPVC

30mm FLANGE AT SILL  
ONLY

JOINERY SIZE

30

SYSTEM DRAINAGE  
OUTLET, DO NOT  
OBSTRUCT!

5 Min

8g x 60 SS SCREWS  
@ 450 CTRS

10g x 60 SS SCREWS  
@ 450 CTRS

WRAP/TAPE/DPM TO  
E2/AS1 BY OTHERS,  
RETURNS INTO  
OPENING TO MEET  
AIRSEAL

TESCON EXTORA PROFIL AIR-SEAL  
TAPE TO ALL 4 SIDES INTERNALLY

STARKE FIXING STRAPS @ 450 CTRS

TESCON EXTORA PROFIL AIR-SEAL  
TAPE TO ALL 4 SIDES INTERNALLY

STARKE FIXING STRAPS @ 450 CTRS

STARKE AMBIANCE INLINE  
WINDOW SYSTEM -  
MASTERSPEC 4541SU uPVC

SIPS / 45 Cavity / 9mm Sheet

Hinged door Open out

Concrete ground floor, Non-rebated

NO PEF ROD, FOAM OR WET  
SEALANT REQUIRED.  
AIR-TIGHTNESS IS PROVIDED BY  
AIR-SEAL TAPE

WRAP/TAPE/DPM TO E2/AS1  
BY OTHERS, RETURNS INTO  
OPENING TO MEET AIRSEAL

8g SS SCREWS @ 450  
CTRS

TESCON EXTORA PROFIL FLASHING  
TAPE TO EXTERNAL HEAD & JAMBS  
RECOMMENDED FOR "EXTRA HIGH"  
WIND ZONE & ABOVE, OR FOR  
IMPROVED THERMAL PERFORMANCE.

50x50 ANGLE FORMS  
FLASHING END-STOPS

9mm NOM CLADDING BY  
OTHERS

PROPRIETARY JAMB  
FLASHING BY STARKE

JOINERY SIZE

29

60  
HEAD FLASHING

LINER / INTERNAL  
FINISH BY OTHERS

WRAP/TAPE/DPM  
RETURN INTO  
OPENING BY OTHERS

10g x 60 SS SCREWS  
@ 450 CTRS

# AMBIANCE

Inline Window Systems

**STARKE**

DISCLAIMER: THIS INFORMATION IS FOR GUIDANCE ONLY. STARKE GROUP LIMITED (TRADING AS STARKE) MAKES NO WARRANTY OR REPRESENTATION OF ANY KIND, EXPRESS OR IMPLIED, REGARDING THE COMPLETENESS, ACCURACY, RELIABILITY OR SUITABILITY OF THE PRODUCT SHOWN HEREIN. RELIANCE ON THIS INFORMATION IS AT THE CUSTOMER'S SOLE RISK. IT IS RECOMMENDED THAT THE CUSTOMER SEEKS PROFESSIONAL ADVICE ON THE SUITABILITY OF THE PRODUCT FOR SPECIFIC APPLICATIONS. FOR TECHNICAL INFORMATION ON THE PRODUCT, PLEASE CONTACT STARKE.

FLASHING TAPE LAPPED  
OVER HEAD FLASHING

50x50 ANGLE FORMS  
FLASHING END-STOPS

PROPRIETARY HEAD  
FLASHING BY STARKE.  
SQ CUT @ FRAME  
PLUS 120mm

TESCON EXTORA  
PROFIL FLASHING TAPE  
TO EXTERNAL HEAD &  
JAMBS RECOMMENDED  
FOR "EXTRA HIGH"  
WIND ZONE & ABOVE,  
OR FOR IMPROVED  
THERMAL  
PERFORMANCE.

STARKE AMBIANCE  
INLINE WINDOW  
SYSTEM -  
MASTERSPEC  
4541SU uPVC

STARKE AMBIANCE  
INLINE WINDOW  
SYSTEM -  
MASTERSPEC  
4541SU uPVC

30mm FLANGE AT SILL  
ONLY

JOINERY SIZE

JOINERY SIZE

30

5 Min

6 mm

8g x 60 SS SCREWS  
@ 450 CTRS

10g x 60 SS SCREWS  
@ 450 CTRS

WRAP/TAPE/DPM TO  
E2/AS1 BY OTHERS,  
RETURNS INTO  
OPENING TO MEET  
AIRSEAL

TESCON EXTORA PROFIL AIR-SEAL  
TAPE TO ALL 4 SIDES INTERNALLY

STARKE FIXING STRAPS @ 450 CTRS

TESCON EXTORA PROFIL AIR-SEAL  
TAPE TO ALL 4 SIDES INTERNALLY

STARKE FIXING STRAPS @ 450 CTRS

STARKE AMBIANCE INLINE  
WINDOW SYSTEM -  
MASTERSPEC 4541SU uPVC

JOINERY SIZE

29

60  
HEAD FLASHING

SIPS / 45 Cavity / 9mm Sheet

Hinged door Open in

Concrete ground floor, Non-rebated

NO PEF ROD, FOAM OR WET  
SEALANT REQUIRED.  
AIR-TIGHTNESS IS PROVIDED BY  
AIR-SEAL TAPE

WRAP/TAPE/DPM TO E2/AS1  
BY OTHERS, RETURNS INTO  
OPENING TO MEET AIRSEAL

8g SS SCREWS @ 450  
CTRS

TESCON EXTORA PROFIL FLASHING  
TAPE TO EXTERNAL HEAD & JAMBS  
RECOMMENDED FOR "EXTRA HIGH"  
WIND ZONE & ABOVE, OR FOR  
IMPROVED THERMAL PERFORMANCE.

50x50 ANGLE FORMS  
FLASHING END-STOPS

9mm NOM CLADDING BY  
OTHERS

PROPRIETARY JAMB  
FLASHING BY STARKE

SYSTEM DRAINAGE  
OUTLET, DO NOT  
OBSTRUCT !

STARKE FIXING STRAPS  
@ 450 CTRS

TESCON EXTORA PROFIL AIR-SEAL  
TAPE TO ALL 4 SIDES INTERNALLY

LINER / INTERNAL  
FINISH BY OTHERS

WRAP/TAPE/DPM  
RETURN INTO  
OPENING BY OTHERS

10g x 60 SS SCREWS  
@ 450 CTRS

# AMBIANCE

Inline Window Systems

**STARKE**









FLASHING TAPE LAPPED  
OVER HEAD FLASHING

50x50 ANGLE FORMS  
FLASHING END-STOPS

PROPRIETARY HEAD  
FLASHING BY STARKE.  
SQ CUT @ FRAME  
PLUS 120mm

TESCON EXTORA  
PROFIL FLASHING TAPE  
TO EXTERNAL HEAD &  
JAMBS RECOMMENDED  
FOR "EXTRA HIGH"  
WIND ZONE & ABOVE,  
OR FOR IMPROVED  
THERMAL  
PERFORMANCE.

STARKE AMBIANCE  
INLINE WINDOW  
SYSTEM -  
MASTERSPEC  
4541SU uPVC

STARKE AMBIANCE  
INLINE WINDOW  
SYSTEM -  
MASTERSPEC  
4541SU uPVC

30mm FLANGE AT SILL  
ONLY

JOINERY SIZE

JOINERY SIZE

35

30

5 Min

6 mm

8g x 60 SS SCREWS  
@ 450 CTRS

10g x 60 SS SCREWS  
@ 450 CTRS

WRAP/TAPE/DPM TO  
E2/AS1 BY OTHERS,  
RETURNS INTO  
OPENING TO MEET  
AIRSEAL

TESCON EXTORA PROFIL AIR-SEAL  
TAPE TO ALL 4 SIDES INTERNALLY

STARKE FIXING STRAPS @ 450 CTRS

STARKE FIXING STRAPS  
@ 450 CTRS

TESCON EXTORA PROFIL AIR-SEAL  
TAPE TO ALL 4 SIDES INTERNALLY

LINER / INTERNAL  
FINISH BY OTHERS

FLASHING TAPE/DPM  
RETURN INTO  
OPENING BY OTHERS

10g x 60 SS SCREWS  
@ 450 CTRS

NO PEF ROD, FOAM OR WET  
SEALANT REQUIRED.  
AIR-TIGHTNESS IS PROVIDED BY  
AIR-SEAL TAPE

TESCON EXTORA PROFIL AIR-SEAL  
TAPE TO ALL 4 SIDES INTERNALLY

STARKE FIXING STRAPS @ 450 CTRS

STARKE AMBIANCE INLINE  
WINDOW SYSTEM -  
MASTERSPEC 4541SU uPVC

JOINERY SIZE

29

60

HEAD FLASHING

SIPS / 45 Cavity / 9mm Sheet

Hinged door Open out

Concrete ground floor, Non-rebated

WRAP/TAPE/DPM TO E2/AS1  
BY OTHERS, RETURNS INTO  
OPENING TO MEET AIRSEAL

8g SS SCREWS @ 450  
CTRS

TESCON EXTORA PROFIL FLASHING  
TAPE TO EXTERNAL HEAD & JAMBS  
RECOMMENDED FOR "EXTRA HIGH"  
WIND ZONE & ABOVE, OR FOR  
IMPROVED THERMAL PERFORMANCE.

50x50 ANGLE FORMS  
FLASHING END-STOPS

9mm NOM CLADDING BY  
OTHERS

PROPRIETARY JAMB  
FLASHING BY STARKE

# AMBIANCE

Inline Window Systems

**STARKE**

DISCLAIMER: THIS INFORMATION IS FOR GUIDANCE ONLY. STARKE GROUP LIMITED (TRADING AS STARKE) MAKES NO WARRANTY OR REPRESENTATION OF ANY KIND, EXPRESS OR IMPLIED, REGARDING THE COMPLETENESS, ACCURACY, RELIABILITY OR SUITABILITY OF THE PRODUCT SHOWN HEREIN. RELIANCE ON THIS INFORMATION IS AT THE CUSTOMER'S SOLE RISK. IT IS RECOMMENDED THAT THE CUSTOMER SEEKS PROFESSIONAL ADVICE ON THE SUITABILITY OF THE PRODUCT FOR SPECIFIC APPLICATIONS. FOR TECHNICAL INFORMATION ON THE PRODUCT, PLEASE CONTACT STARKE.

