

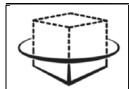
90mm & RAB WALL FRAMING  
19mm CAVITY &  
CLADDING VARIOUS

# AMBIANCE™

Inline Window Systems

STÄRKE

- 1 COVER & INDEX
- 2 OPENING PREPARATION 1
- 3 OPENING PREPARATION 2
- 4 FLASHINGS RANGE
- 5 9mm CLADDING
- 6 PROFILE METAL CLADDING
- 7 19mm CLADDING / RUSTICATED WEATHERBOARD
- 8 35mm CLADDING / BEVEL BACK WEATHERBOARD
- 9 35mm CLADDING / BEVEL BACK WEATHERBOARD & FACINGS
- 10 70 BRICK CLADDING



interactive assembly  
instructions available

<http://wksp.nz/sg-wfl-w70>



Get **WORKINGSPEC** from  
Apple App Store/Google Play

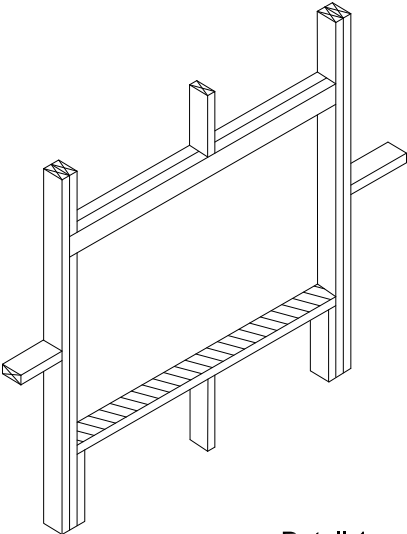
# Opening Preparation

The preparation of the wall opening prior to the installation of the window or door is essentially the same regardless of cladding option. The following offers a step by step guide to the process.

## Step P1 – Preliminary Check

Before proceeding with the installation and preparation of the wall underlay, the installer should examine and confirm that the sill trimmer is essentially level, straight and free of twist. It is particularly important that it is well secured and does not slope toward the interior of the building. If necessary, the sill trimmer should be planed to ensure it does not exhibit any of the above conditions.

The sill trimmer must be designed to comply with NZS3604.



Detail 1

Note: Projects within the new Extra High wind zone require the use of a Rigid Underlay in addition to and underneath a flexible wall underlay, except as noted in the attached comment.

This needs to be considered when sizing the windows.

**9.1.7.2** Rigid *wall underlays*, in association with *drained cavities* (including *direct fixed* corrugated profile metal) are required in Extra High *wind zones*. Refer to Table 3 and Table 23. Rigid *underlays* are also required to *external walls* of attached garages that are unlined. Refer Paragraphs 1.1.1 & 9.1.3.4 c).

Rigid *wall underlays* shall be in accordance with Table 23, and shall:

- a) Be minimum 7mm plywood, or 6mm fibre cement sheet
- b) Be installed with sheet edges fixed over solid framing
- c) Be over-fixed with a flexible *wall underlay* from Table 23 and installed as in Paragraph 9.1.7.1

COMMENT:  
Some proprietary systems may not require the addition of a flexible *underlay*

Step P2 – Cut the Underlay

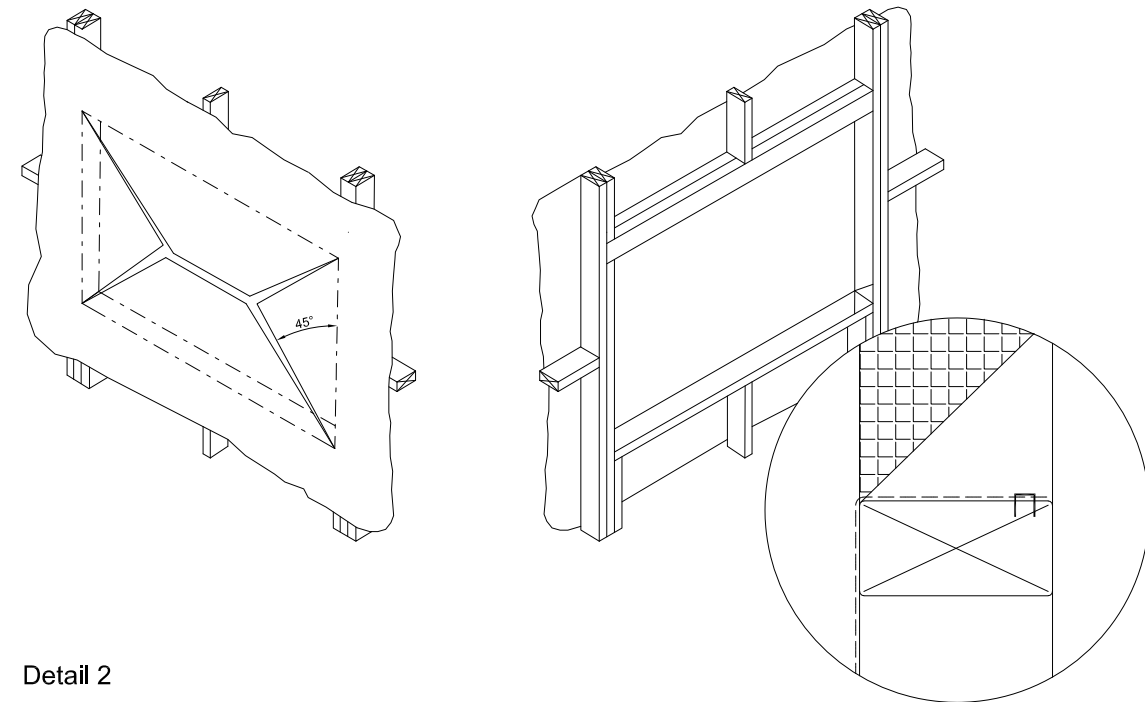
Clause 9.1.5 a) describes the application of a flexible wall underlay.

Amend 5 Aug 2011	<b>9.1.5 Wall underlays to wall openings</b>
	Prior to window or door installation:
Amend 5 Aug 2011	Flexible wall underlay shall be cut and dressed into all sides of openings as per Figure 72A and B,

To achieve this, follow these steps;

- a. Cut the building underlay at 45° away from each corner.
- b. Fold the flaps tightly into the opening and secure to the framing on all sides.
- c. Trim off excess underlay after fixing.

Note: Figures 72A & 72B do not show the inner extent of the flexible wall underlay. The industry trend has been to cut this off at the inner corner of the framing as wrapping around sometimes interferes with the internal linings. Ensure the underlay is fixed tightly to the framework.



Detail 2

Step P3 – Flexible Flashing Tape

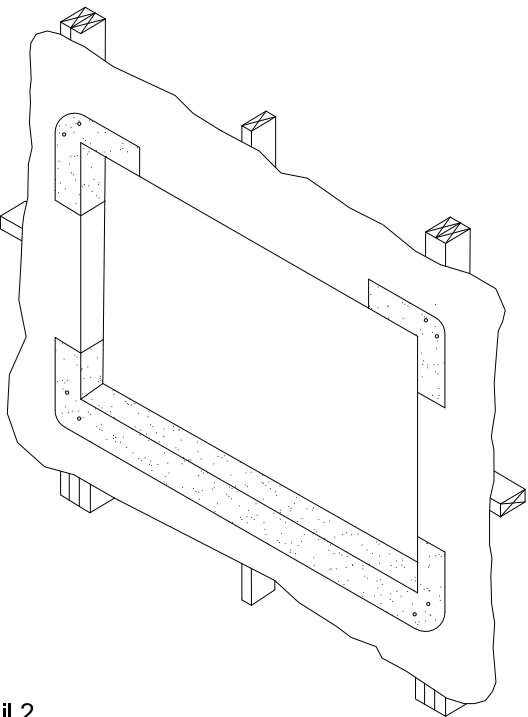
After ensuring the flashing tape to be used meets the criteria set out in Clause 9.1.5 b), follow these steps to satisfy the clause;

- a. Cut the flashing tape for the sill at least 200mm wider than the opening.

- b. Fit the tape, as described in the manufacturers literature, with the inner edge of the tape flush with the inside line of the framing, so that it extends a minimum of 100mm up each jamb ensuring timber framing is covered.

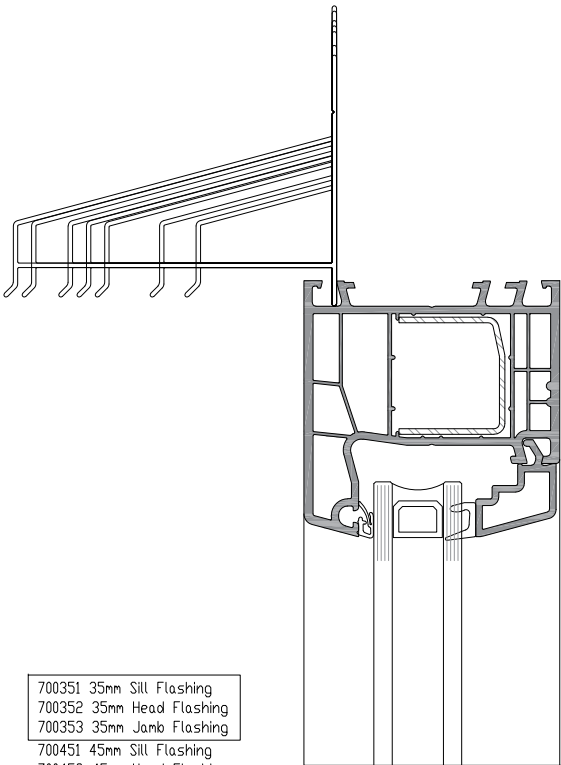
- c. Ensure the tape is securely adhered to the underlay on all surfaces and fits tightly into each of the corners.

- d. Cut two more pieces of tape at least 200mm long and fit into each of the upper corners as described above ensuring timber framing is covered.

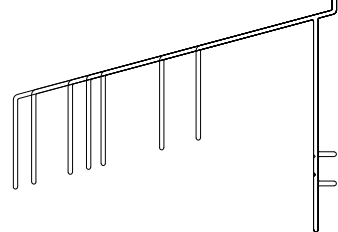
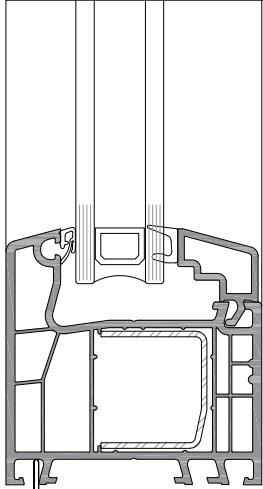
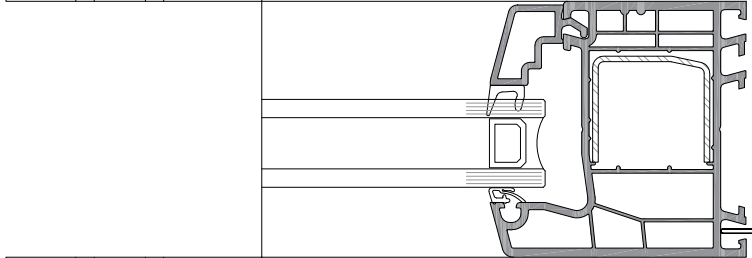


Detail 2

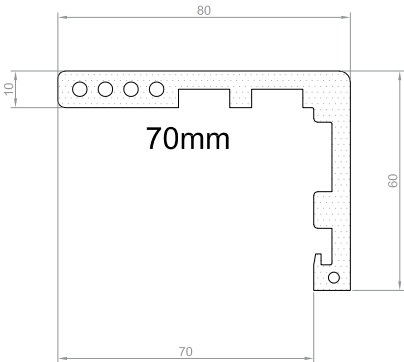
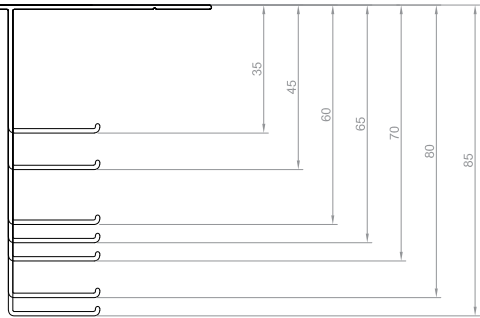
Note: Ensure all exposed timber is covered, particularly in the corners. This may mean the tape has to extend further than nominated.



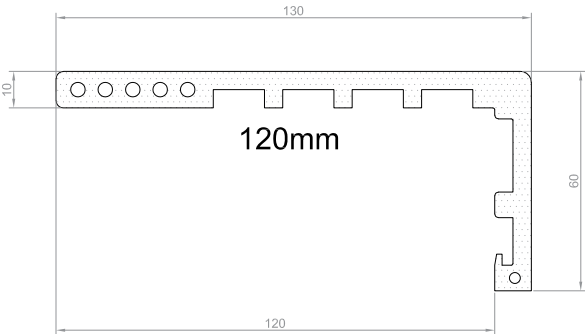
- 700351 35mm Sill Flashing  
700352 35mm Head Flashing  
700353 35mm Jamb Flashing  
700451 45mm Sill Flashing  
700452 45mm Head Flashing  
700453 45mm Jamb Flashing  
700601 60mm Sill Flashing  
700602 60mm Head Flashing  
700603 60mm Jamb Flashing  
700651 65mm Sill Flashing  
700652 65mm Head Flashing  
700653 65mm Jamb Flashing  
700701 70mm Sill Flashing  
700702 70mm Head Flashing  
700703 70mm Jamb Flashing  
700801 80mm Sill Flashing  
700802 80mm Head Flashing  
700803 80mm Jamb Flashing  
700851 85mm Sill Flashing  
700852 85mm Head Flashing  
700853 85mm Jamb Flashing



FLASHING KITS	RECOMMENDED CLADDING DIMs	SOME TYPICAL APPLICATIONS
35mm	25 to 29mm	19 Cavity & 9mm Sheet -OR- 19 Cavity & Folded Metal Cladding
45mm	35 to 39mm	19 Cavity & 19mm Sheet -OR- 19 Cavity & Rusticated Weatherboard
60mm	50 to 54mm	19 Cavity & Bevel-Back Weatherboard -OR- 45 Cavity & 9mm Sheet
65mm	55 to 59mm	50 Cavity & 70 Brick -OR- 45 Cavity & Folded Metal Cladding
70mm	60 to 69mm	45 Cavity & 19mm Sheet -OR- 45 Cavity & Rusticated Weatherboard
80mm	70 to 74mm	19 Cavity & Bevel-Back Weatherboard with Facings
85mm	75 to 79mm	45 Cavity & Bevel-Back Weatherboard



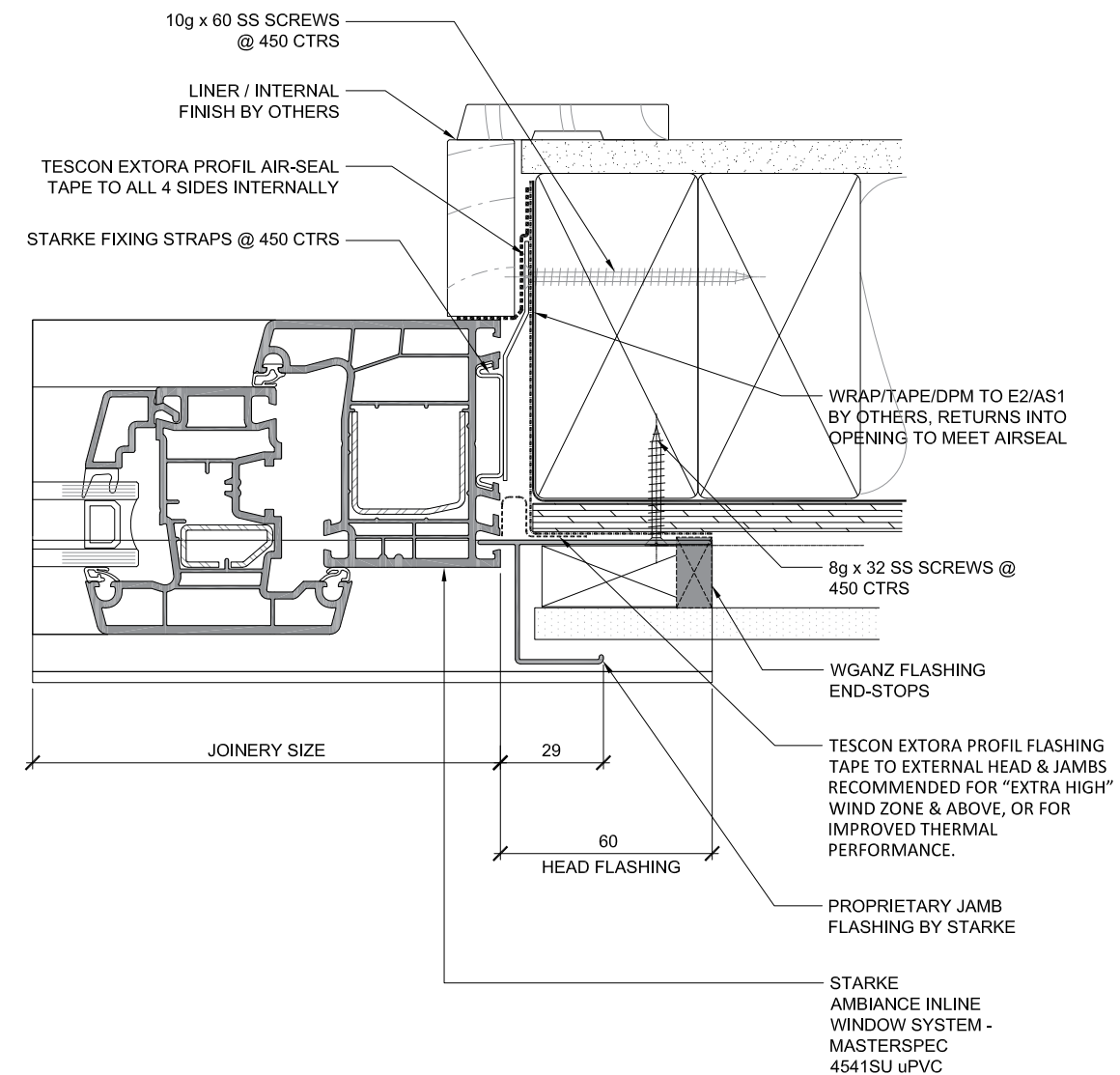
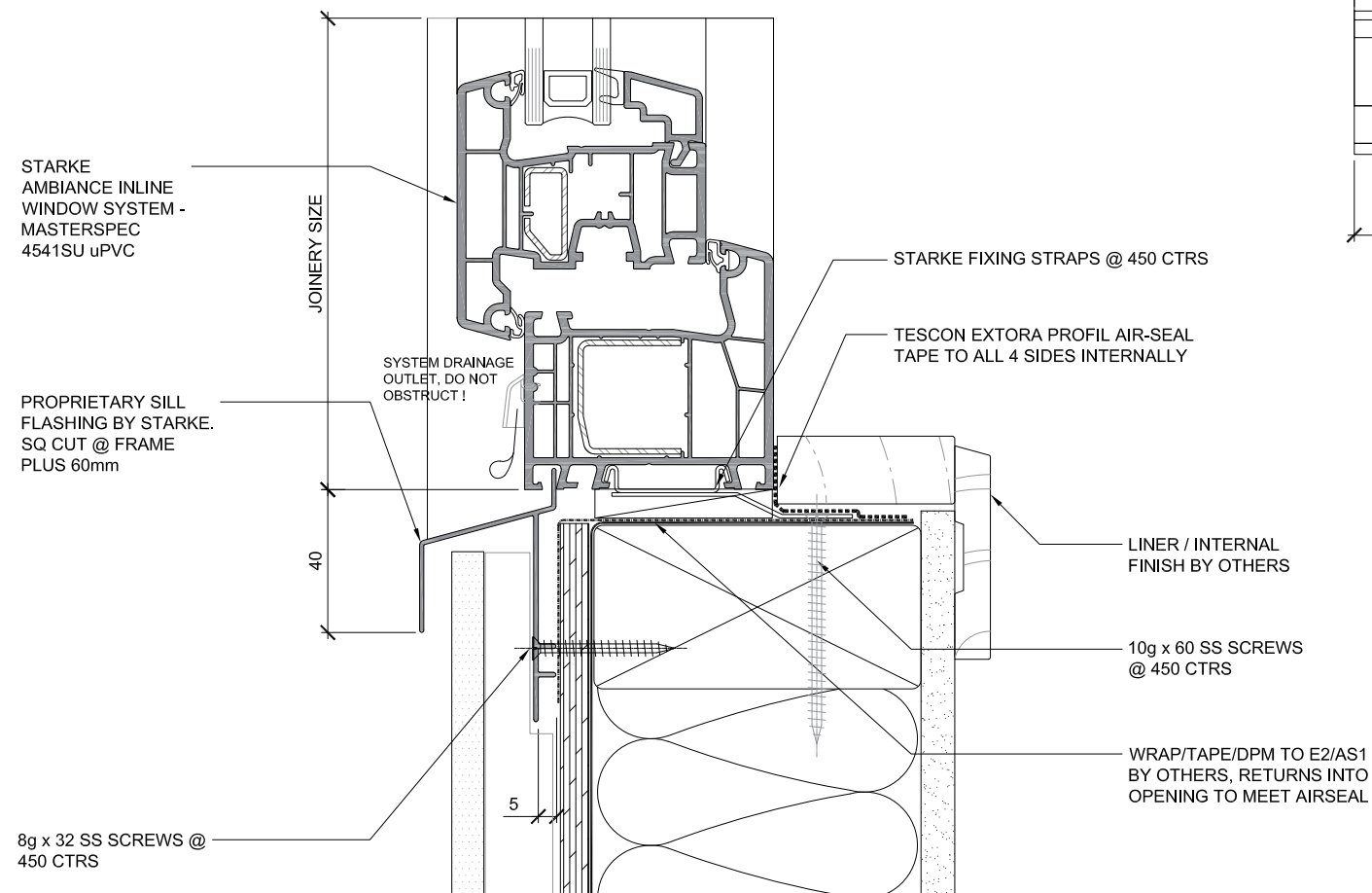
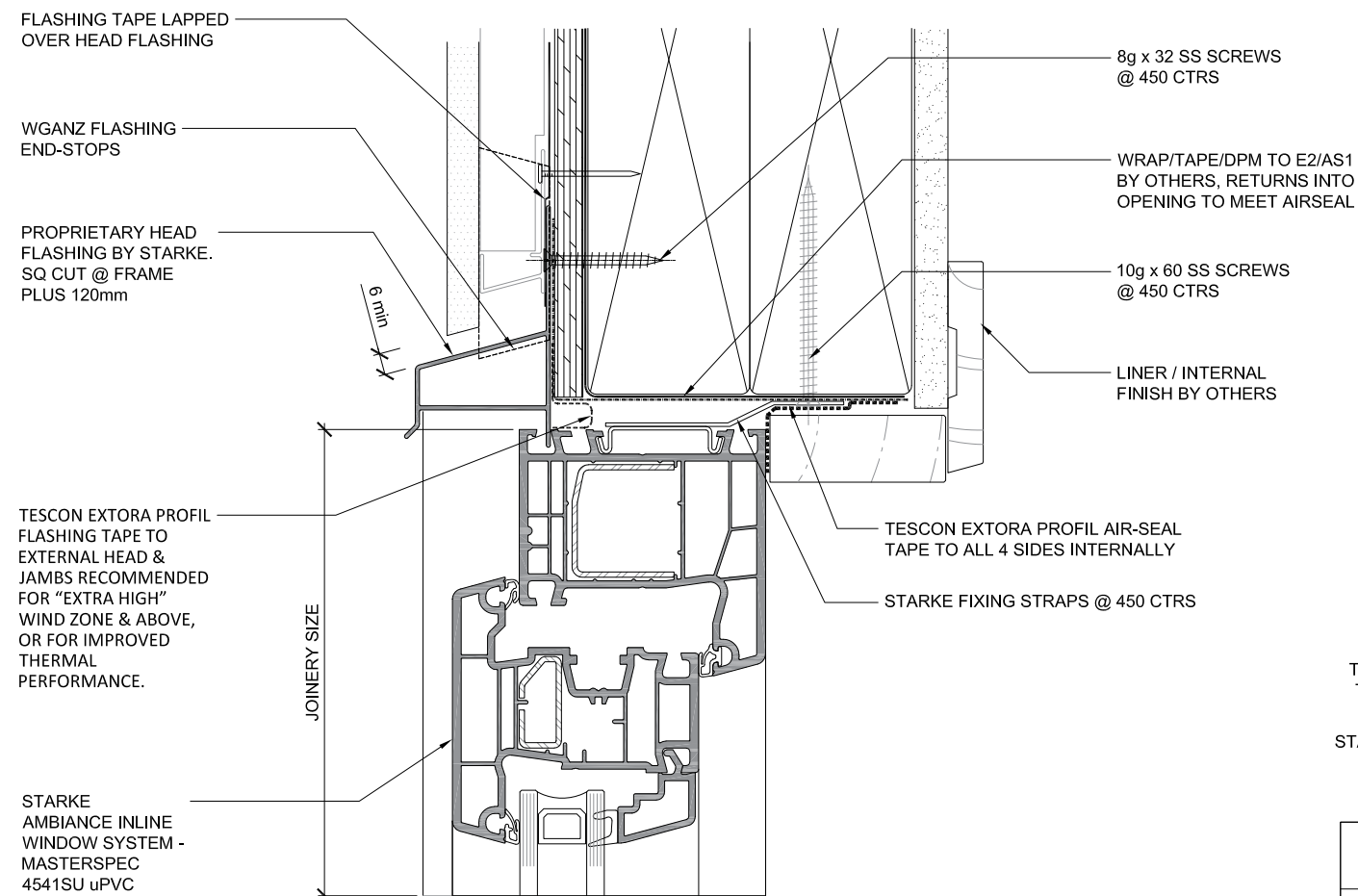
STARKITRAVE - FAST  
ARCHITRAVE & REVEAL SYSTEM



90mm Framing / RAB / 9mm Cladding on cavity

Awning open out

NO PEF ROD, FOAM OR WET  
SEALANT REQUIRED.  
AIR-TIGHTNESS IS PROVIDED BY  
AIR-SEAL TAPE



# AMBIANCE™

Inline Window Systems

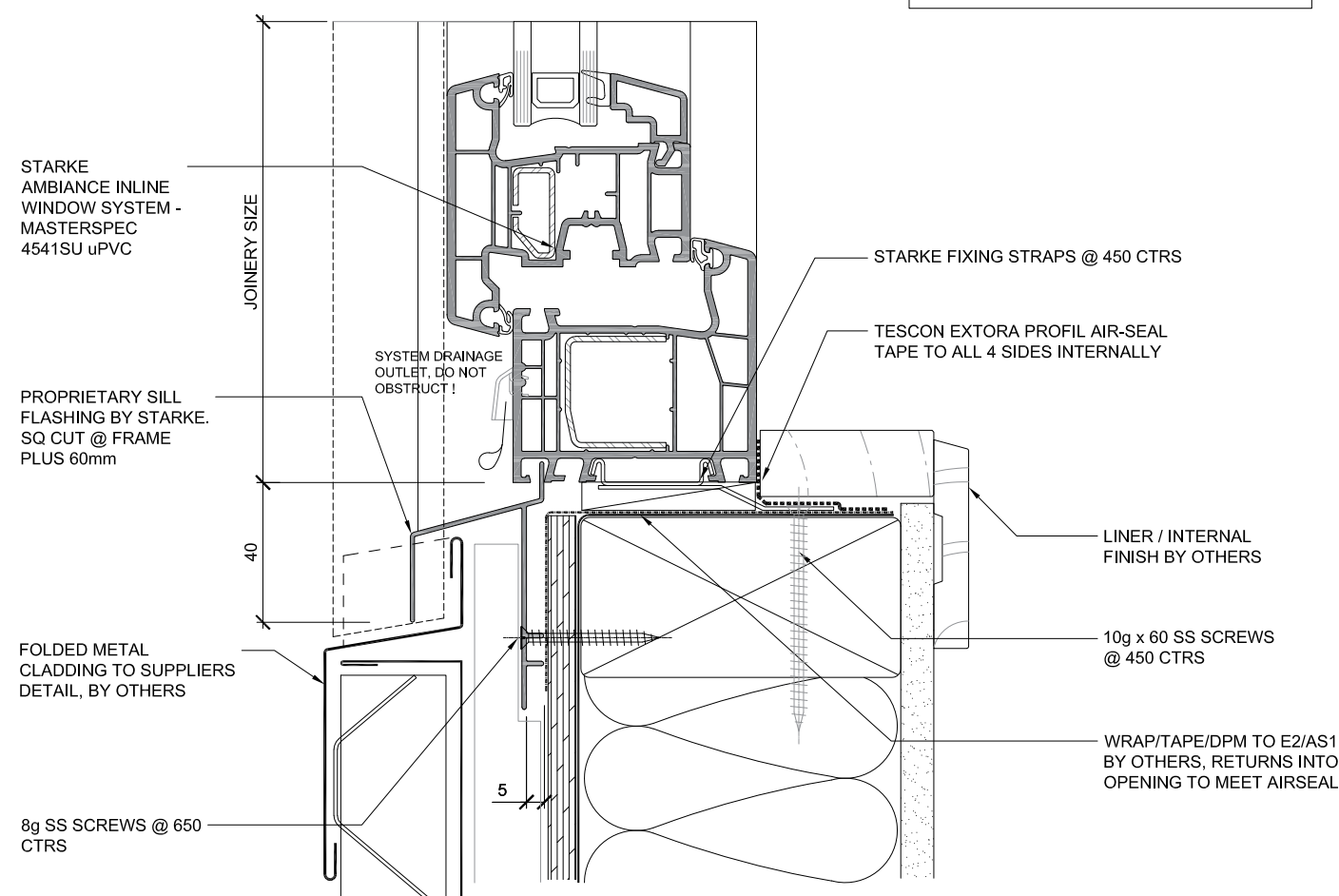
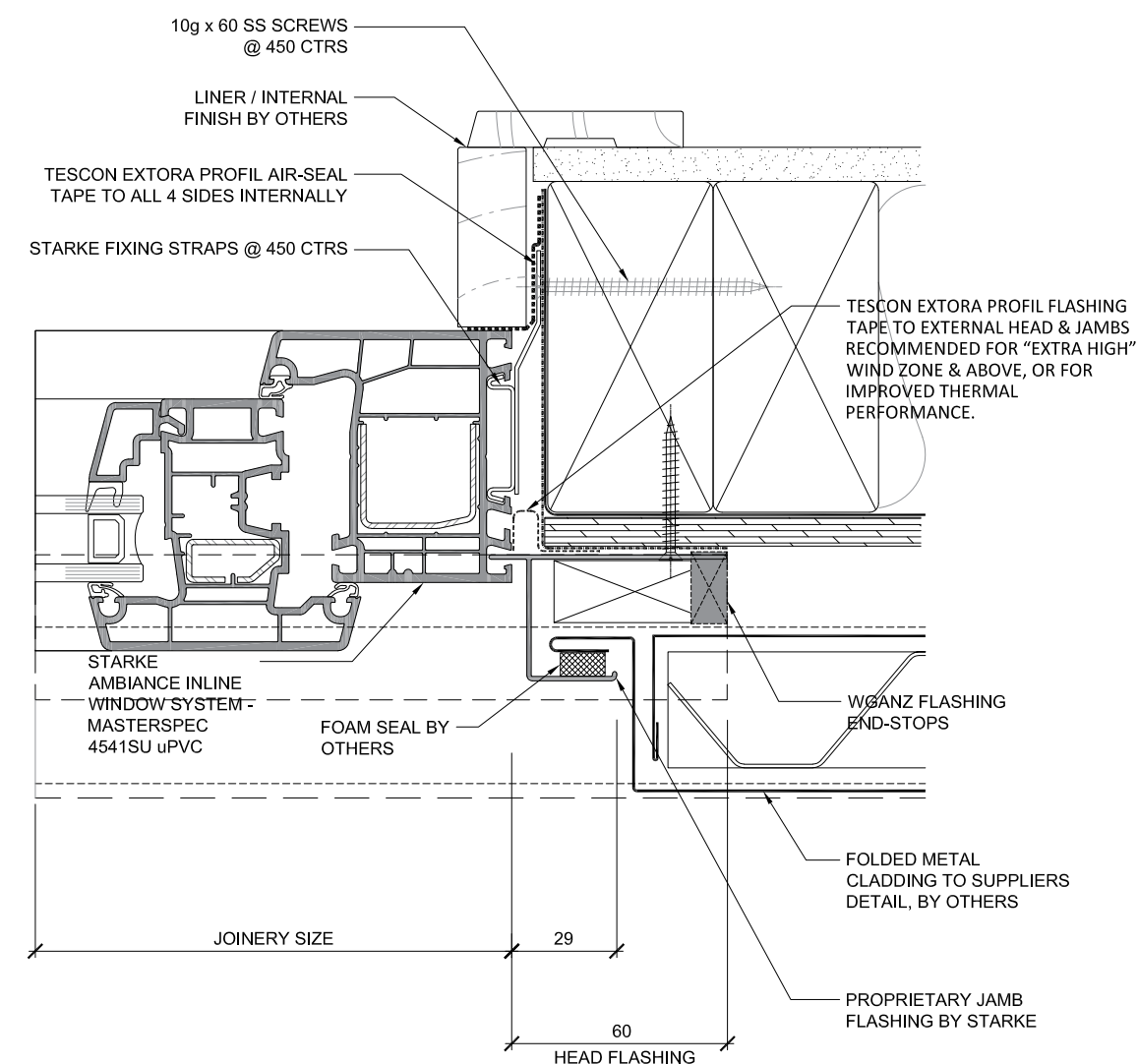
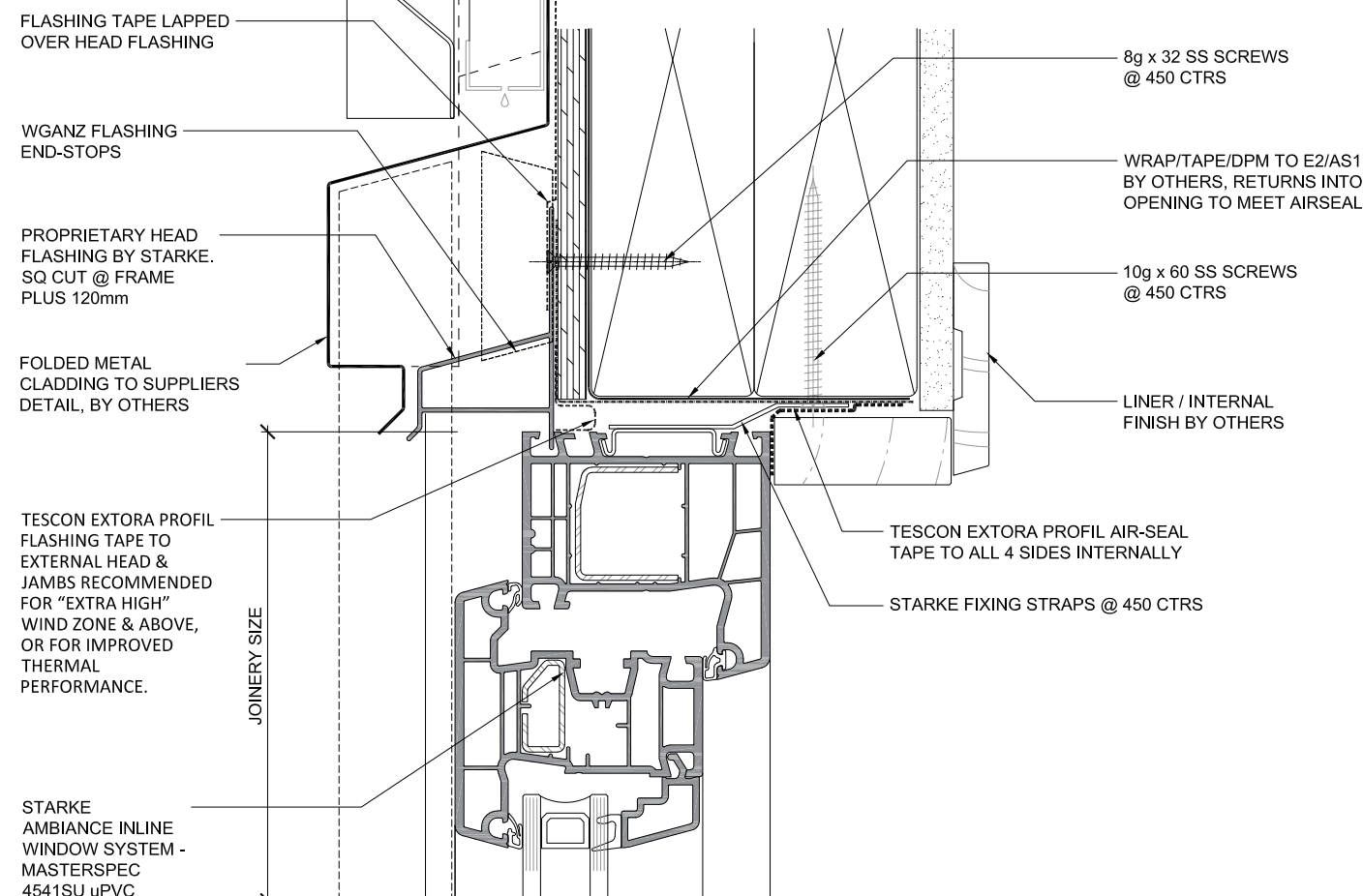
**STÄRKE**

DISCLAIMER: THIS INFORMATION IS FOR GUIDANCE ONLY. STARKE GROUP LIMITED (TRADING AS STÄRKE) MAKES NO WARRANTY OR REPRESENTATION OF ANY KIND, EXPRESS OR IMPLIED, REGARDING THE COMPLETENESS, ACCURACY, RELIABILITY OR SUITABILITY OF THE PRODUCT SHOWN HEREIN. RELIANCE ON THIS INFORMATION IS AT THE CUSTOMER'S SOLE RISK. IT IS RECOMMENDED THAT THE CUSTOMER SEEKS PROFESSIONAL ADVICE ON THE SUITABILITY OF THE PRODUCT FOR SPECIFIC APPLICATIONS. FOR TECHNICAL INFORMATION ON THE PRODUCT, PLEASE CONTACT STÄRKE.

90mm Framing / RAB / Metal Cladding on 19 cavity

Awning open out

NO PEF ROD, FOAM OR WET  
SEALANT REQUIRED.  
AIR-TIGHTNESS IS PROVIDED BY  
AIR-SEAL TAPE



# AMBIANCE™

Inline Window Systems

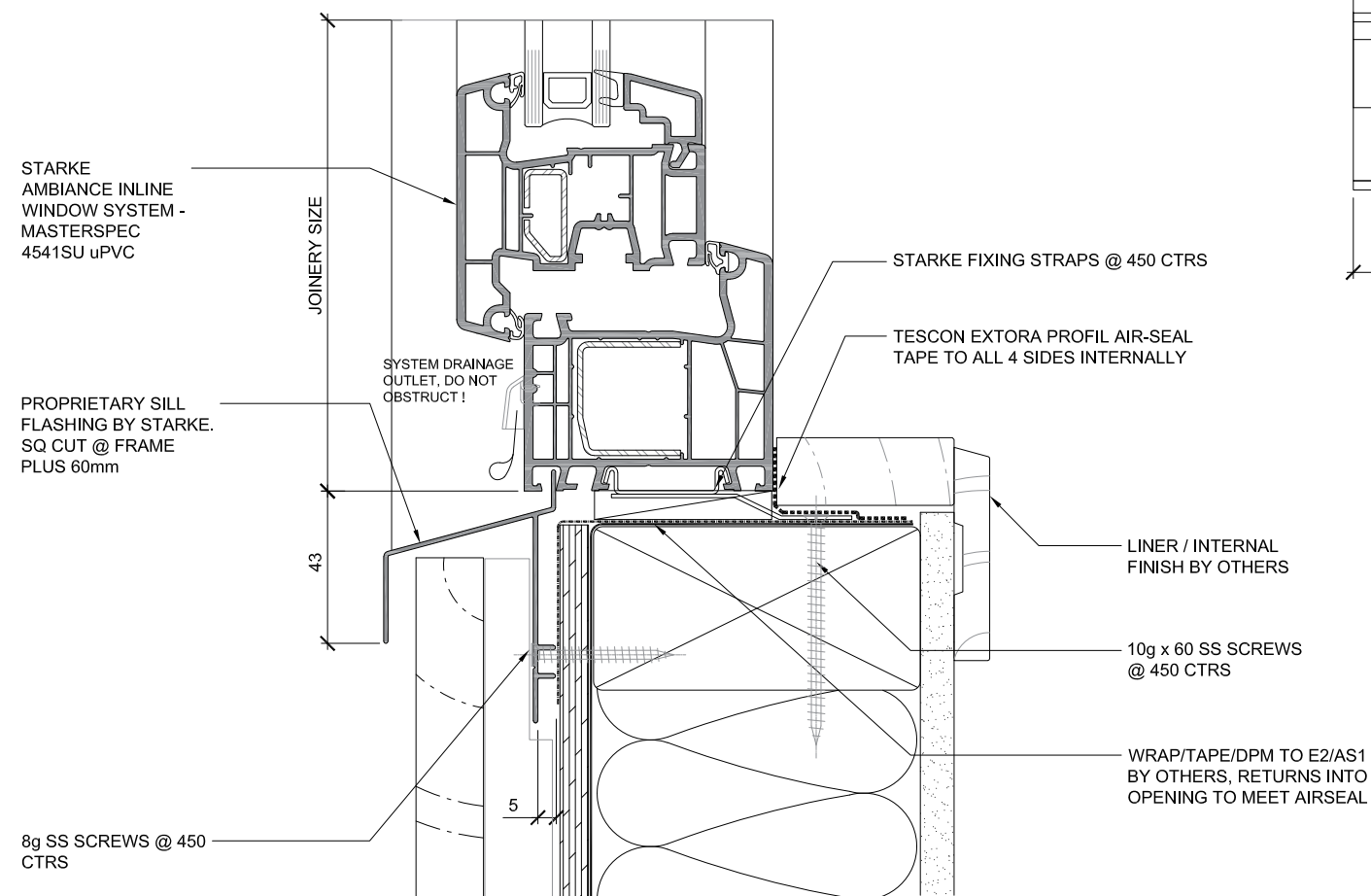
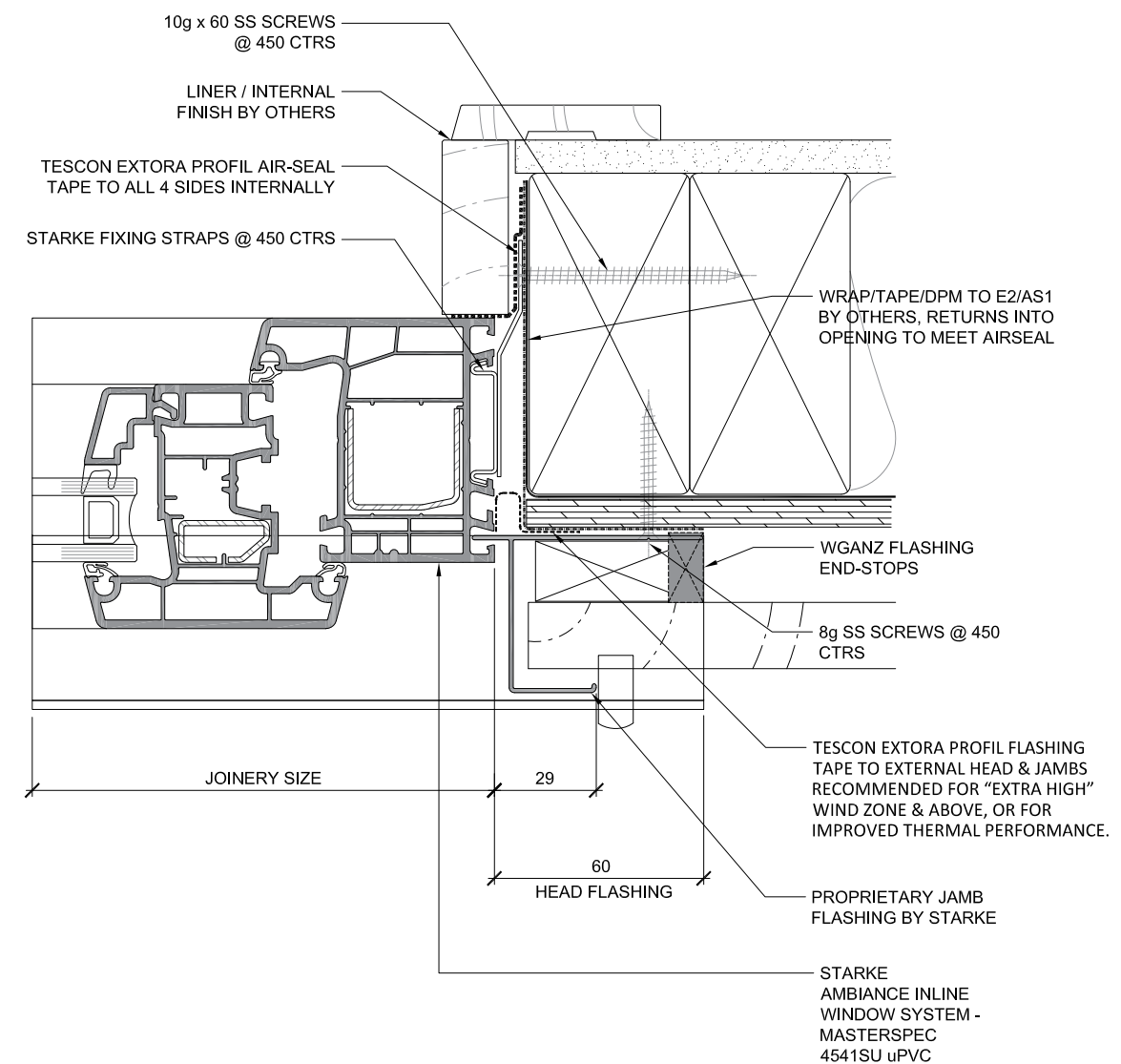
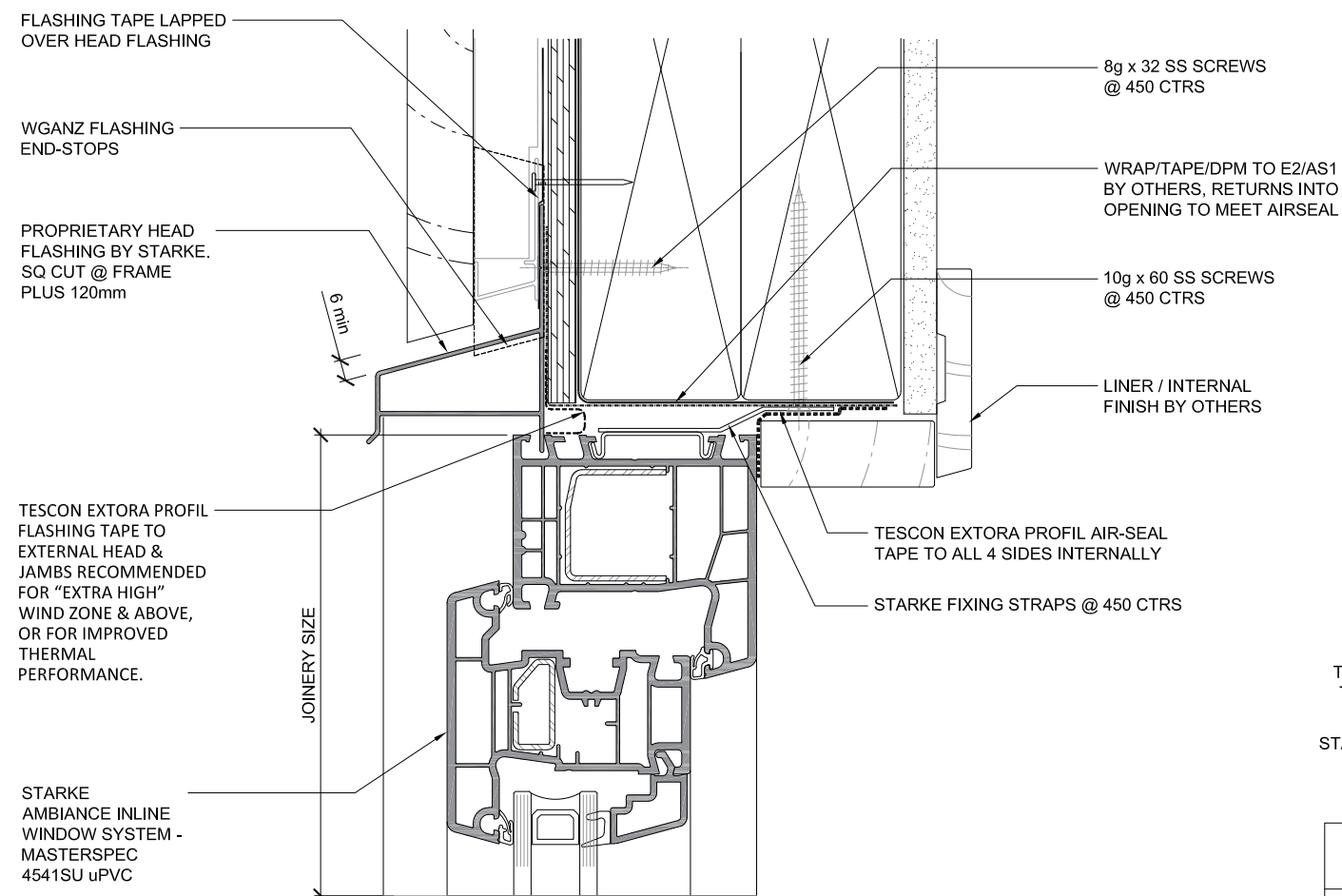
## STÄRKE



90mm Framing / RAB / 19mm Cladding on cavity

Awning open out

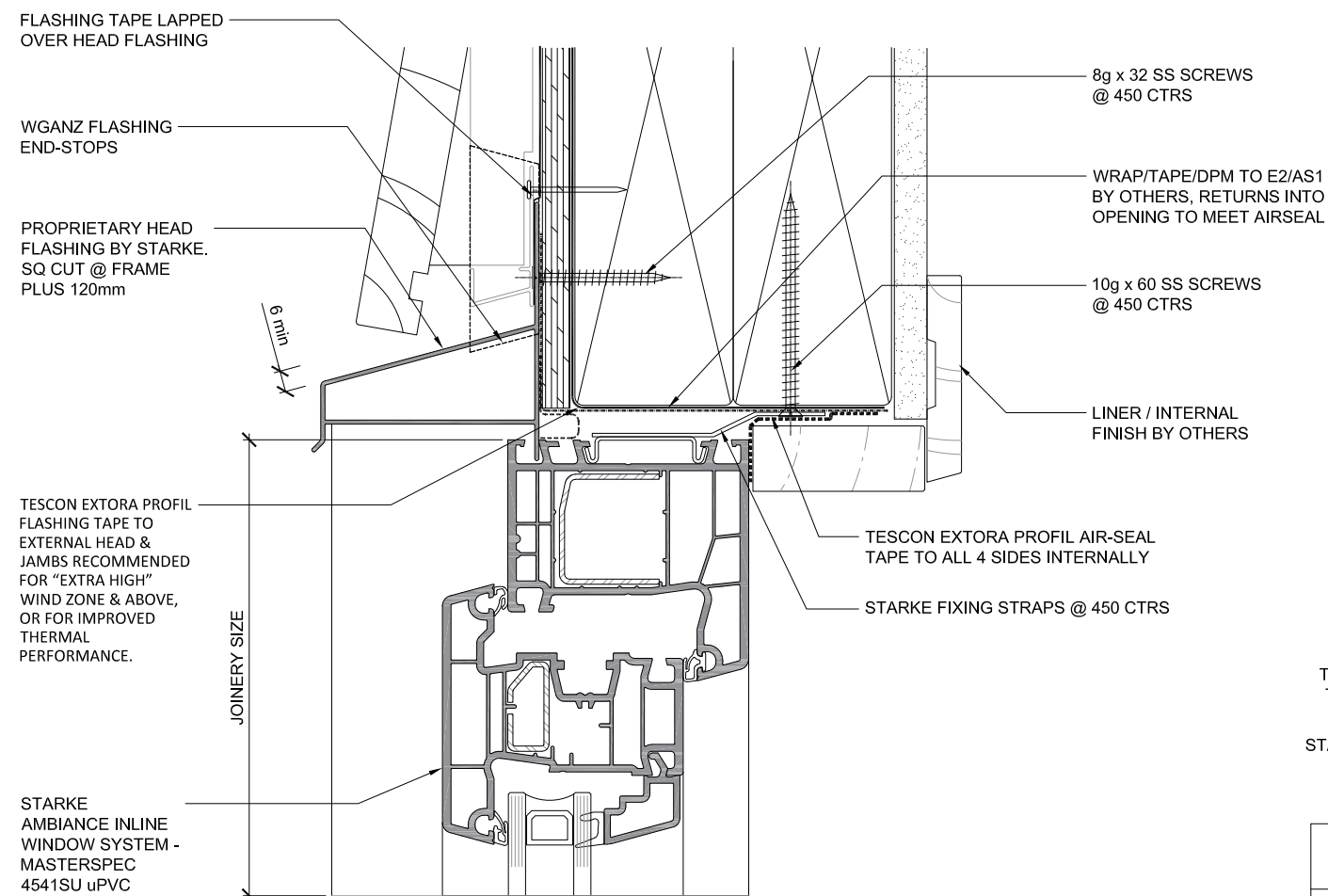
NO PEF ROD, FOAM OR WET  
SEALANT REQUIRED.  
AIR-TIGHTNESS IS PROVIDED BY  
AIR-SEAL TAPE



# AMBIANCE™

Inline Window Systems

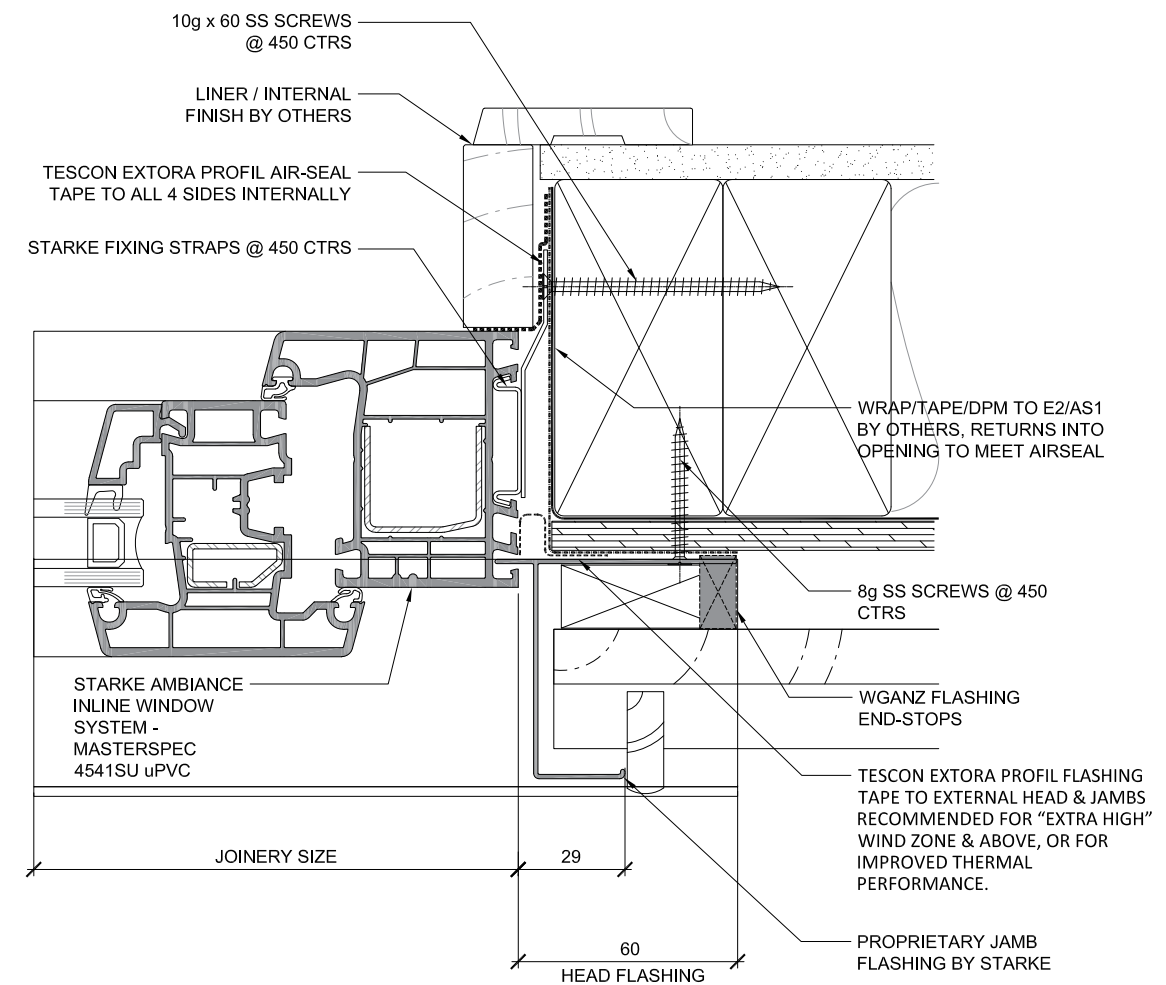
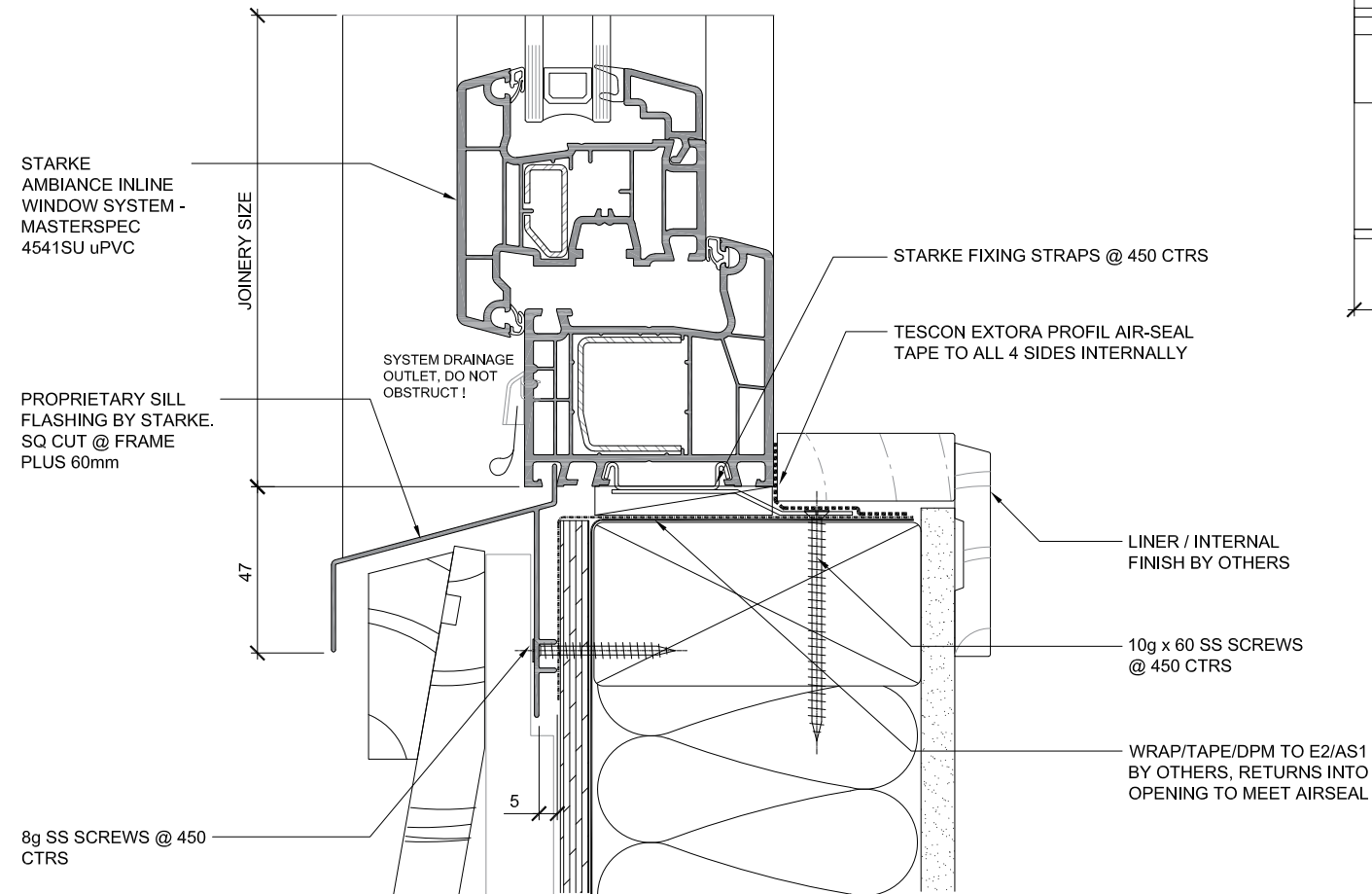
**STÄRKE**



90mm Framing / RAB / Bevel Back Weatherboard on cavity

Awning open out

NO PEF ROD, FOAM OR WET SEALANT REQUIRED.  
AIR-TIGHTNESS IS PROVIDED BY AIR-SEAL TAPE



# AMBIANCE™

Inline Window Systems

**STÄRKE**



90mm Framing / RAB / Bevel Back Weatherboard on cavity

Fixed-Lite

FLASHING TAPE LAPPED  
OVER HEAD FLASHING

WGANZ FLASHING  
END-STOPS

PROPRIETARY HEAD  
FLASHING BY STARKE.  
SQ CUT @ FRAME  
PLUS 60mm

TESCON EXTORA  
PROFIL FLASHING  
TAPE TO EXTERNAL  
HEAD & JAMBS  
RECOMMENDED FOR  
"EXTRA HIGH" WIND  
ZONE & ABOVE, OR  
FOR IMPROVED  
THERMAL  
PERFORMANCE.

STARKE  
AMBIANCE INLINE  
WINDOW SYSTEM -  
MASTERSPEC  
4541SU uPVC

STARKE  
AMBIANCE INLINE  
WINDOW SYSTEM -  
MASTERSPEC  
4541SU uPVC

PROPRIETARY SILL  
FLASHING BY STARKE.  
SQ CUT @ FRAME  
PLUS 60mm

8g x 32 SS SCREWS @  
450 CTRS

8g x 32 SS SCREWS  
@ 450 CTRS

WRAP/TAPE/DPM TO E2/AS1  
BY OTHERS, RETURNS INTO  
OPENING TO MEET AIRSEAL

10g x 60 SS SCREWS  
@ 450 CTRS

LINER / INTERNAL  
FINISH BY OTHERS

TESCON EXTORA PROFIL AIR-SEAL  
TAPE TO ALL 4 SIDES INTERNALLY

STARKE FIXING STRAPS @ 450 CTRS

STARKE FIXING STRAPS @ 450 CTRS

TESCON EXTORA PROFIL AIR-SEAL  
TAPE TO ALL 4 SIDES INTERNALLY

LINER / INTERNAL  
FINISH BY OTHERS

10g x 60 SS SCREWS  
@ 450 CTRS

WRAP/TAPE/DPM TO E2/AS1  
BY OTHERS, RETURNS INTO  
OPENING TO MEET AIRSEAL

NO PEF ROD, FOAM OR WET  
SEALANT REQUIRED.  
AIR-TIGHTNESS IS PROVIDED BY  
AIR-SEAL TAPE

10g x 60 SS SCREWS  
@ 450 CTRS

LINER / INTERNAL  
FINISH BY OTHERS

TESCON EXTORA PROFIL AIR-SEAL  
TAPE TO ALL 4 SIDES INTERNALLY

STARKE FIXING STRAPS @ 450 CTRS

STARKE AMBIANCE  
INLINE WINDOW  
SYSTEM -  
MASTERSPEC  
4541SU uPVC

WRAP/TAPE/DPM TO E2/AS1  
BY OTHERS, RETURNS INTO  
OPENING TO MEET AIRSEAL

8g SS SCREWS @ 450  
CTRS

WGANZ FLASHING  
END-STOPS

PROPRIETARY JAMB  
FLASHING BY STARKE

JOINERY SIZE

29

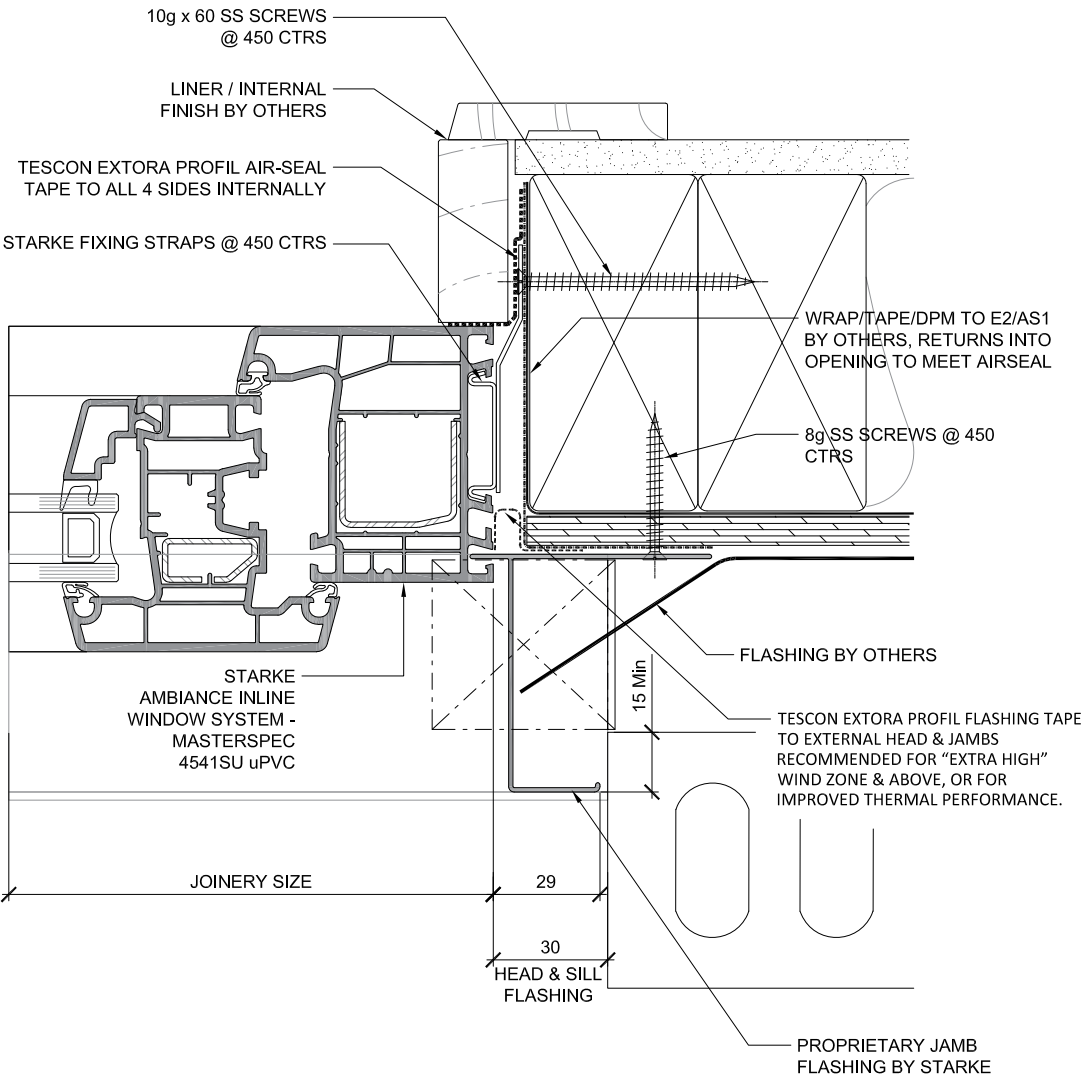
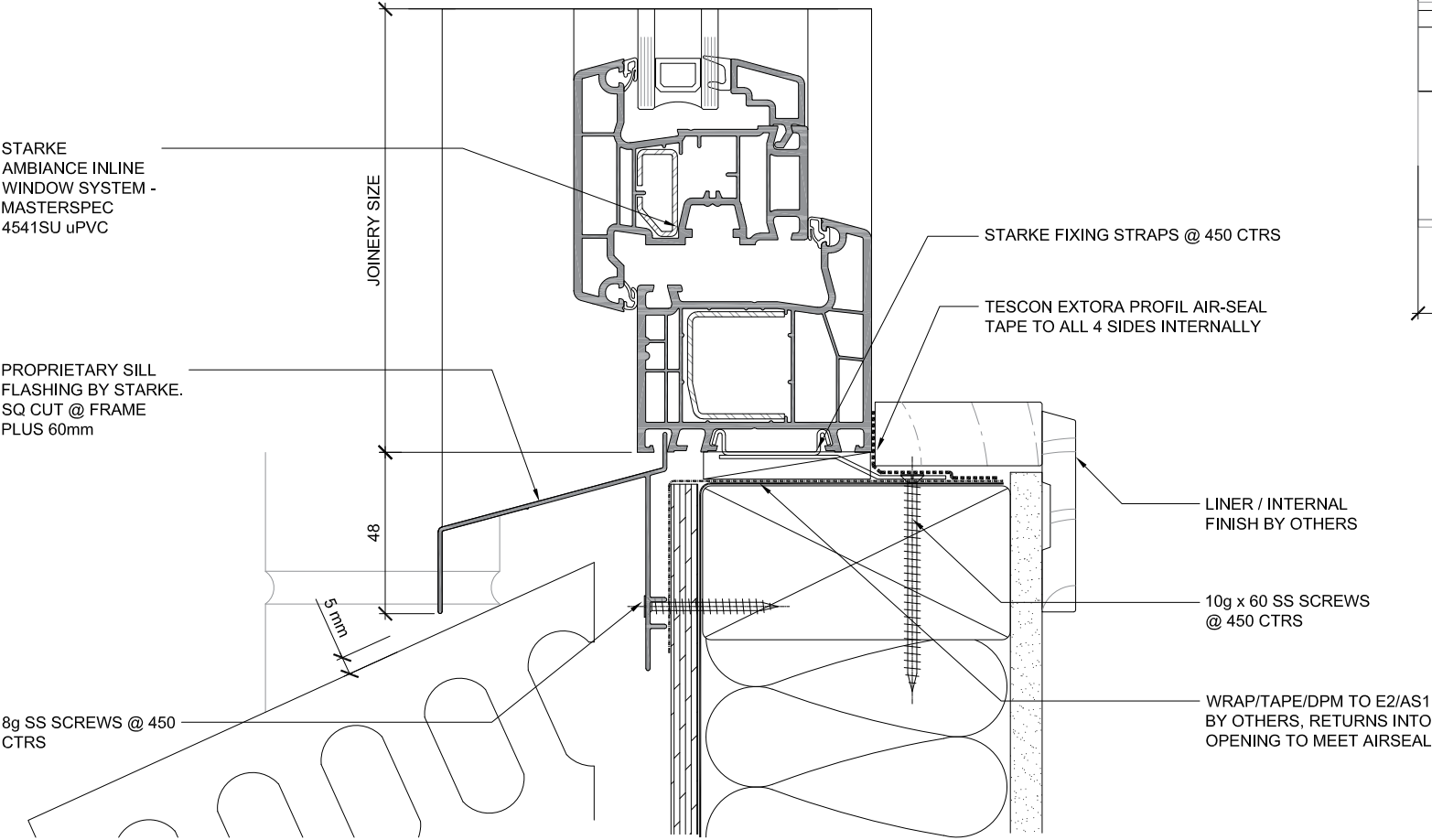
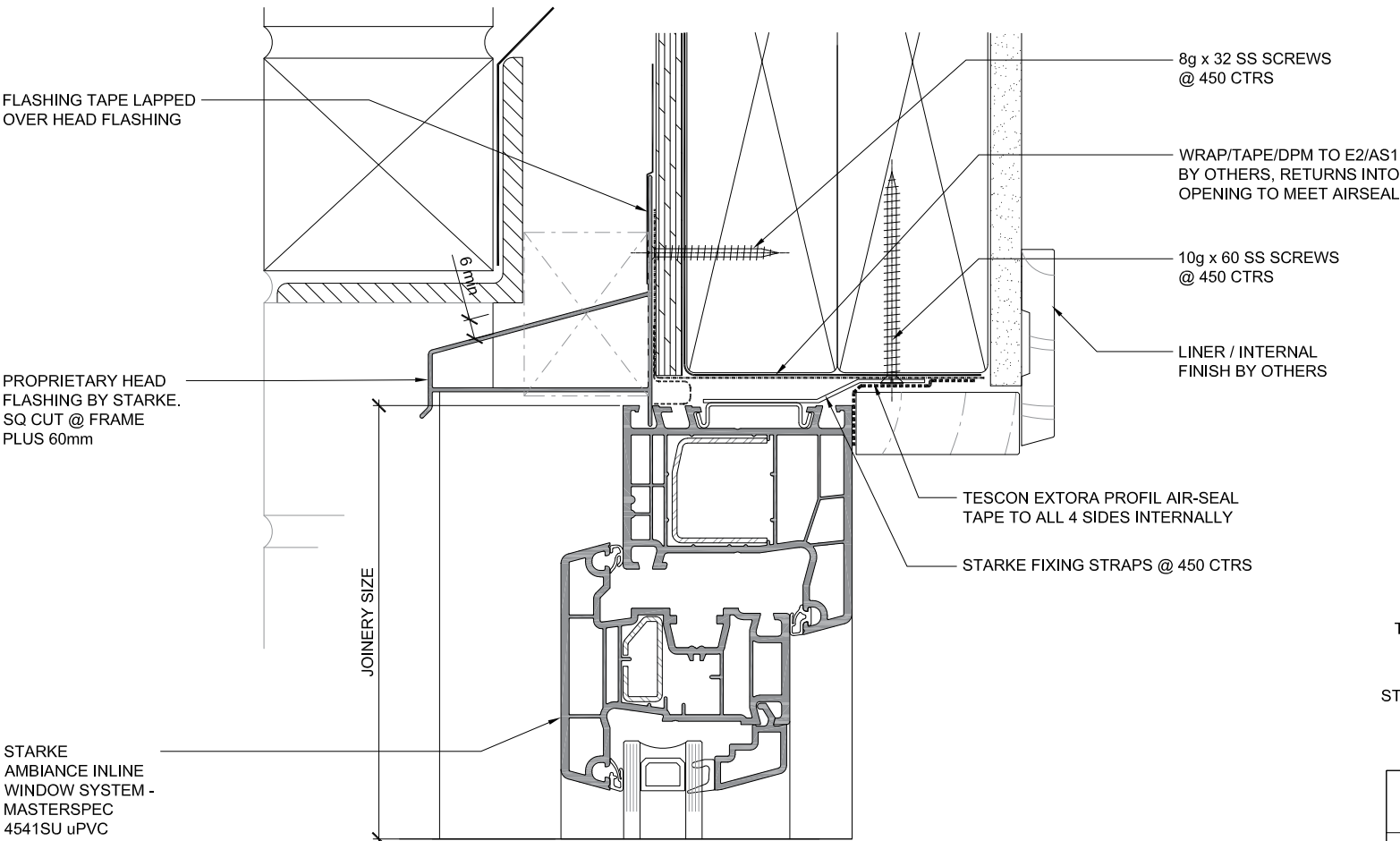
# AMBIANCE™

Inline Window Systems

**STÄRKE**

DISCLAIMER: THIS INFORMATION IS FOR GUIDANCE ONLY. STARKE GROUP LIMITED (TRADING AS STÄRKE) MAKES NO WARRANTY OR REPRESENTATION OF ANY KIND, EXPRESS OR IMPLIED, REGARDING THE COMPLETENESS, ACCURACY, RELIABILITY OR SUITABILITY OF THE PRODUCT SHOWN HEREIN. RELIANCE ON THIS INFORMATION IS AT THE CUSTOMER'S SOLE RISK. IT IS RECOMMENDED THAT THE CUSTOMER SEEKS PROFESSIONAL ADVICE ON THE SUITABILITY OF THE PRODUCT FOR SPECIFIC APPLICATIONS. FOR TECHNICAL INFORMATION ON THE PRODUCT, PLEASE CONTACT STÄRKE.

NO PEF ROD, FOAM OR WET SEALANT REQUIRED. AIR-TIGHTNESS IS PROVIDED BY AIR-SEAL TAPE



AMBIANCE™  
Inline Window Systems  
STÄRKE

DISCLAIMER: THIS INFORMATION IS FOR GUIDANCE ONLY. STARKE GROUP LIMITED (TRADING AS STÄRKE) MAKES NO WARRANTY OR REPRESENTATION OF ANY KIND, EXPRESS OR IMPLIED, REGARDING THE COMPLETENESS, ACCURACY, RELIABILITY OR SUITABILITY OF THE PRODUCT SHOWN HEREIN. RELIANCE ON THIS INFORMATION IS AT THE CUSTOMER'S SOLE RISK. IT IS RECOMMENDED THAT THE CUSTOMER SEEKS PROFESSIONAL ADVICE ON THE SUITABILITY OF THE PRODUCT FOR SPECIFIC APPLICATIONS. FOR TECHNICAL INFORMATION ON THE PRODUCT, PLEASE CONTACT STÄRKE.